

2532 TWIN VIEW

Central Saanich





FOR SALE



2532 Twin View Pl

Central Saanich

SUMMARY OVERVIEW



LISTING PRICE: \$1,588,000



LOT AREA 9,031 square feet



LIVING AREA: 3,421 square feet



BEDROOMS: 5



BATHROOMS: 4



Tucked away on a quiet cul-de-sac in sought-after Tanner Ridge, this meticulously maintained home offers over 3,400 sq. ft. of flexible living space ideal for growing families, multigenerational living, or mortgage-helper potential. Bright principal rooms are enhanced by solid maple hardwood flooring, abundant natural light, & a stunning red cedar solarium. The chef's kitchen features a premium BlueStar professional gas range, ample prep space, & seamless flow for entertaining. The main-level primary retreat includes a walk-in closet & spa-inspired ensuite w/ heated floors & a deep soaker tub. The lower level offers a legal self-contained 1-bed suite w/ new flooring, updated appliances, & private entrance. Outside, enjoy a beautifully landscaped backyard oasis w/ hot tub, gazebo, greenhouse, & raised garden beds. Additional highlights include an EV charger, hot water on demand, a new heat pump. Easy access to Sidney, Victoria, YYJ, BC Ferries, parks, schools, recreation & amenities.



Property Floorplan

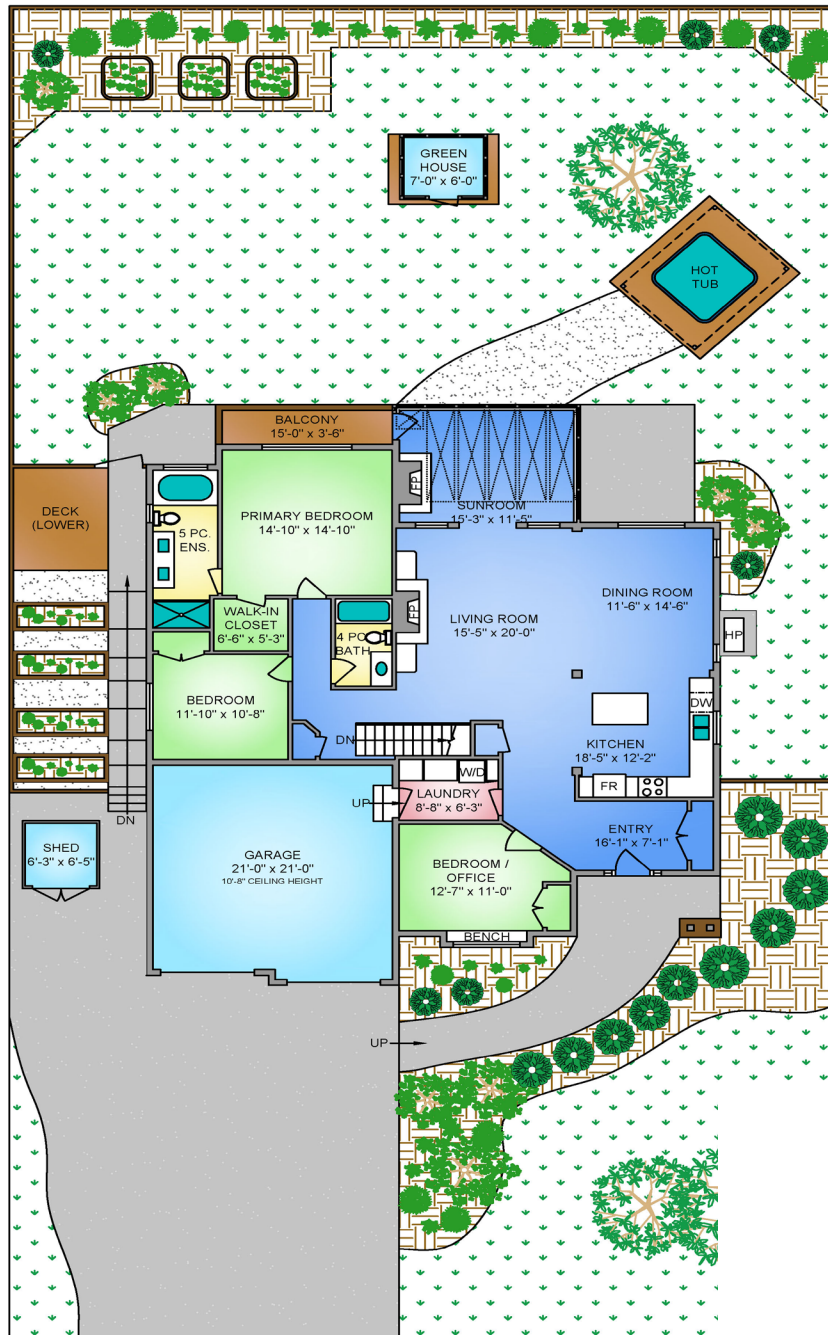
Main Level 2,017 sq.ft.
Lower Level 1,404 sq.ft.

TOTAL AREA 3,421 sq.ft.

Garage 486 sq. ft.

Deck/Patio 449 sq.ft.

Crawl Space 423 sq.ft.



MAIN FLOOR
2017 SQ. FT.
8'-0" CEILING HEIGHT

NORTH



0' 5' 10'
SCALE



Property Floorplan

Main Level 2,017 sq.ft.
Lower Level 1,404 sq.ft.

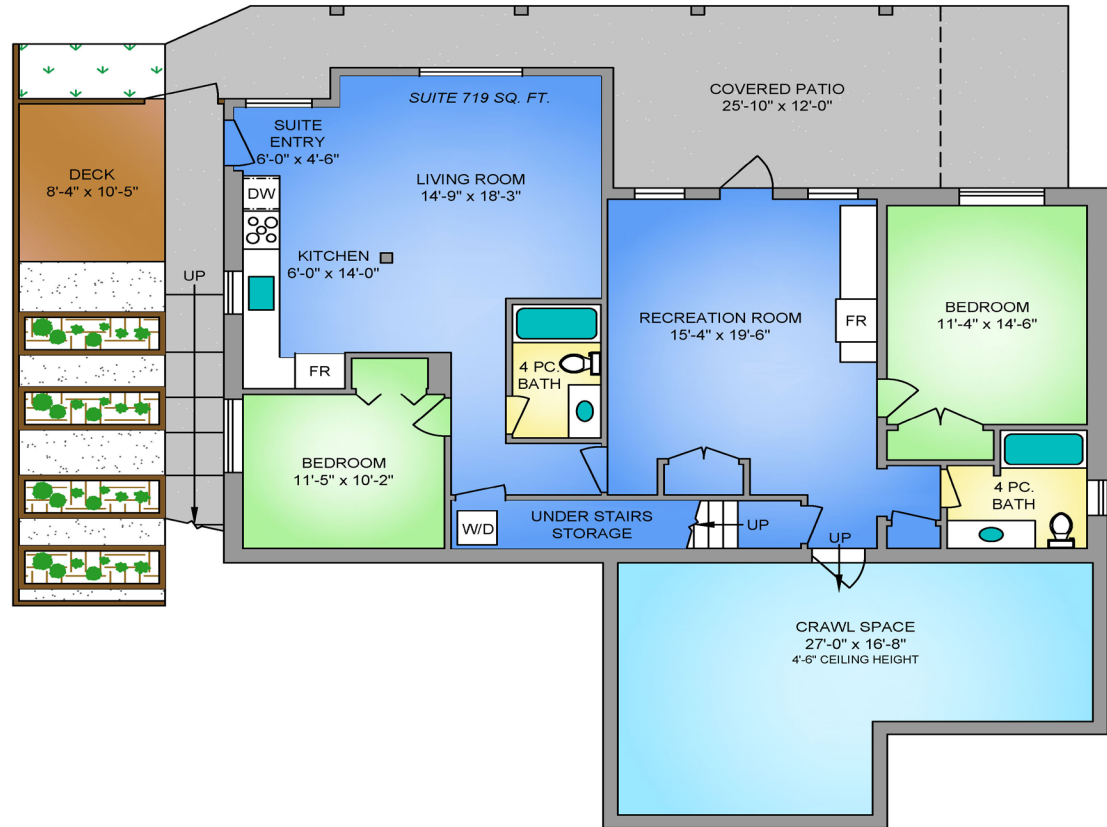
TOTAL AREA 3,421 sq.ft.

Garage 486 sq. ft.

Deck/Patio 449 sq.ft.

Crawl Space 423 sq.ft.

LOWER FLOOR 1404 SQ. FT. 8'-0" CEILING HEIGHT



NORTH



0' 5' 10'

SCALE



Property Photos

EXTERIOR





Property Photos

INTERIOR





Property Photos

PRIMARY BEDROOM AND ENSUITE





Property Photos

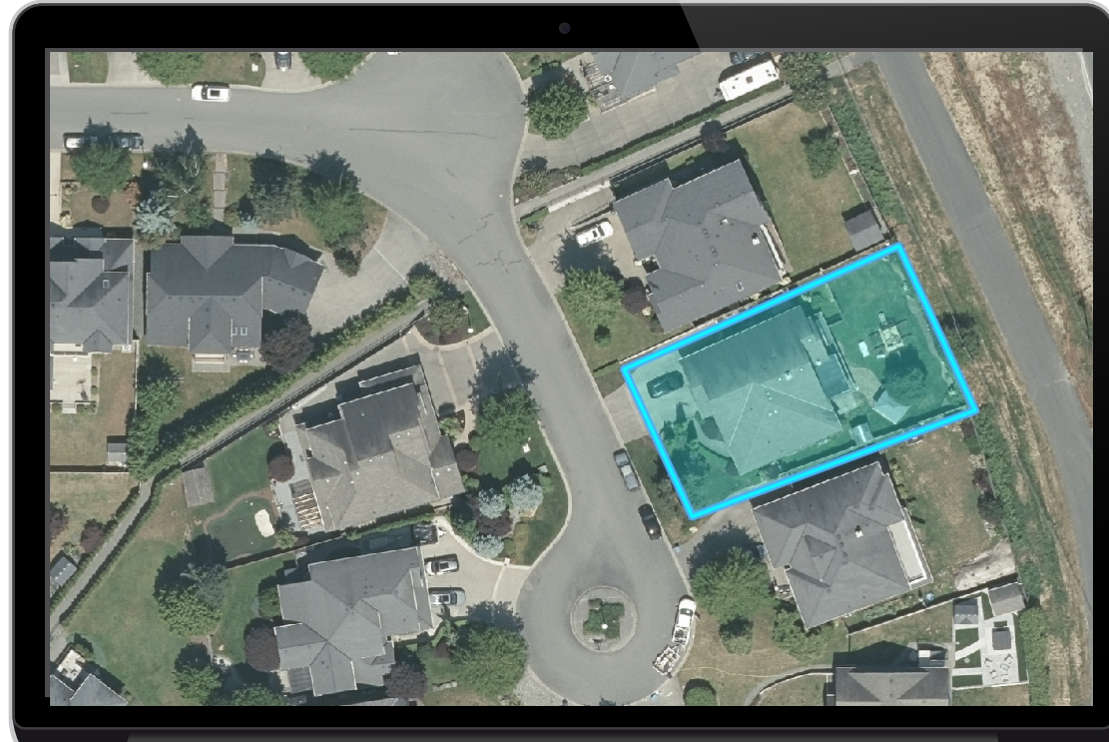
SUITE





Location

(GIS) MAPPING



Central Saanich offers the perfect blend of rural charm and modern convenience. Surrounded by farmland, wineries, and stunning coastal scenery, the community is known for its welcoming atmosphere, local markets, parks, trails, and waterfront recreation. Residents enjoy easy access to shops, restaurants, Victoria, and the rest of the Saanich Peninsula, making Central Saanich an ideal place to enjoy a relaxed yet connected lifestyle.



 **CHACE
WHITSON**
PERSONAL REAL ESTATE CORPORATION


Macdonald
Realty



CEL · 250 818 9338 | TEL · 778 426 2262

Chace@ChaceWhitson.com | ChaceWhitson.com

2411 · Bevan Avenue Sidney, BC · V8L 4M9





Chace Whitson | 778.250.9338 | Chace@ChaceWhitson.com | ChaceWhitson.com