

# 10900 GREENPARK DRIVE

North Saanich





FOR SALE



# 10900 Greenpark Drive

North Saanich

## SUMMARY OVERVIEW



LISTING PRICE: \$2,650,000



LIVING AREA: 4,258 sq ft



LOT AREA: 0.54 acres



BEDROOMS: 4 + Den



BATHROOMS: 6



Perched on a private 0.54-acre lot backing directly onto Horth Hill Regional Park, this stunning West Coast-inspired residence offers sweeping marina and ocean views with coveted southeast exposure. Featuring 4 bedrooms + den, 6 bathrooms, and over 4,258 sq.ft. of refined living space, this thoughtfully designed home blends luxury, comfort, and functionality. Expansive sun-filled patios and decks with built-in outdoor heating create seamless indoor-outdoor living, perfect for year-round entertaining. Interior highlights include brushed oak hardwood floors, quartz countertops, premium Dacor graphite stainless steel appliances, a walk-in pantry, a heat pump with A/C, and elevator access to all levels. The oversized triple-car garage adds exceptional convenience. Located in a quiet upscale neighbourhood just minutes from schools, beaches, parks, marinas, Deep Cove, Sidney by the Sea, and Victoria International Airport, this is West Coast living at its finest.



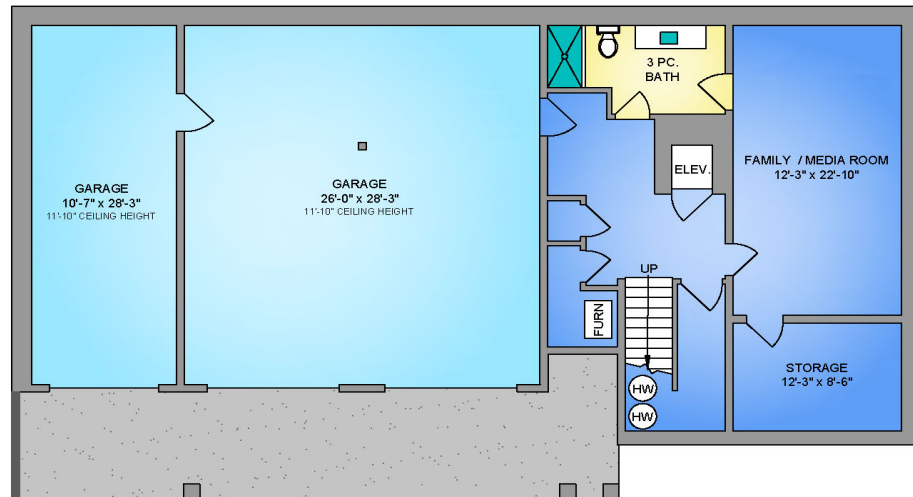
## Property Floor plan

First Floor	922 sq.ft.
Second Floor	1,598 sq.ft.
Third Floor	1,738 sq.ft.

**TOTAL AREA 4,258 sq.ft.**

Garage	1,173 sq.ft.
Deck/Paito	1,864 sq.ft.

### FIRST FLOOR 922 SQ. FT. 11' CEILING HEIGHT



NORTH

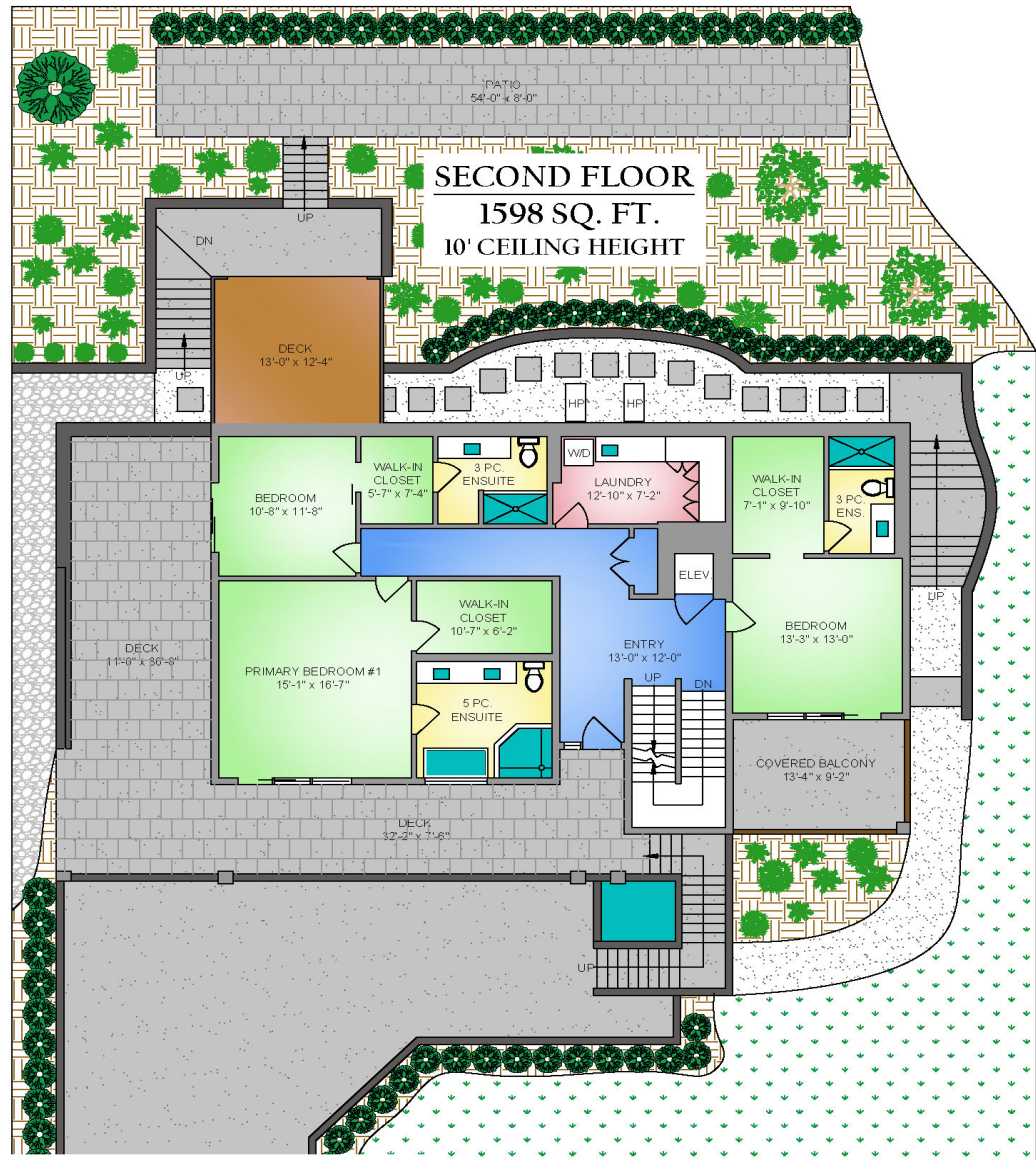


0' 5' 10'  
SCALE

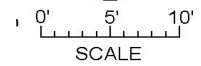
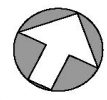


# Property Floor plan

First Floor	922 sq.ft.
Second Floor	1,598 sq.ft.
Third Floor	1,738 sq.ft.
<b>TOTAL AREA</b>	<b>4,258 sq.ft.</b>
Garage	1,173 sq.ft.
Deck/Paito	1,864 sq.ft.



NORTH





# Property Floor plan

First Floor 922 sq.ft.  
Second Floor 1,598 sq.ft.  
Third Floor 1,738 sq.ft.

**TOTAL AREA 4,258 sq.ft.**

Garage 1,173 sq.ft.  
Deck/Paito 1,864 sq.ft.

## THIRD FLOOR 1738 SQ. FT. 10' CEILING HEIGHT



NORTH



0' 5' 10'  
SCALE



## Property Photos

EXTERIOR





# Property Photos

INTERIOR





# Property Photos

INTERIOR



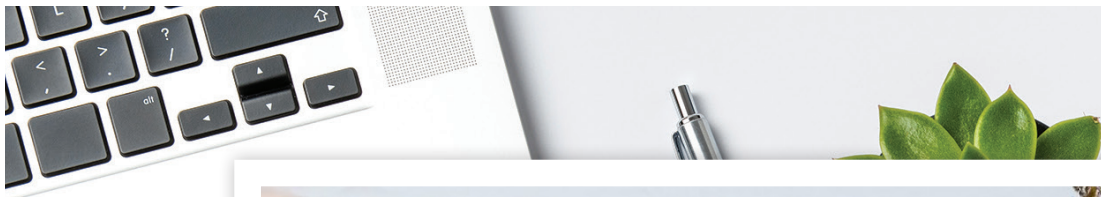


## Location

(GIS) MAPPING



Set within the peaceful Greenpark neighbourhood of North Saanich, this sought-after community is known for its quiet streets, lush natural surroundings, and relaxed coastal atmosphere. Offering a blend of spacious homes and scenic landscapes, Greenpark provides a tranquil West Coast lifestyle just minutes to Sidney, local marinas, parks, and the Victoria International Airport.



 **CHACE  
WHITSON**  
REAL ESTATE GROUP

  
Macdonald  
Realty



CEL · 250 818 9338 | TEL · 778 426 2262

[Chace@ChaceWhitson.com](mailto:Chace@ChaceWhitson.com) | [ChaceWhitson.com](http://ChaceWhitson.com)

2411 · Bevan Avenue Sidney, BC · V8L 4M9





Chace Whitson | 778.250.9338 | [Chace@ChaceWhitson.com](mailto:Chace@ChaceWhitson.com) | [ChaceWhitson.com](http://ChaceWhitson.com)