

10965 MADRONA DR

North Saanich





FOR SALE



10965 Madrona Dr

North Saanich

SUMMARY OVERVIEW



LISTING PRICE:

\$1,495,000



LIVING AREA:

1,808 sq. ft.



BEDROOMS:

3



BATHROOMS:

3



Exceptional ocean-view residence offering 3 beds, 3 baths, and 1,808 sq.ft. of thoughtfully designed living space. The bright open-concept main level is filled with natural light from expansive windows overlooking a private, south-facing backyard. The chef-inspired kitchen features quartz countertops, soft-close cabinetry, and premium appliances, including an induction cooktop with dual oven and wine fridge, ideal for everyday living and entertaining. A versatile main-floor bedroom suits guests, a home office, or aging in place. The spacious primary retreat boasts a wrap-around balcony to enjoy stunning outlooks. Outdoor living shines with generous patios and a manicured, low-maintenance yard designed for relaxation. Added features include a heat pump with A/C, oversized garage with roughed-in EV charger and dog wash station, plus accessible crawl space storage. Minutes to beaches, marinas, and trails, this is West Coast living at its finest



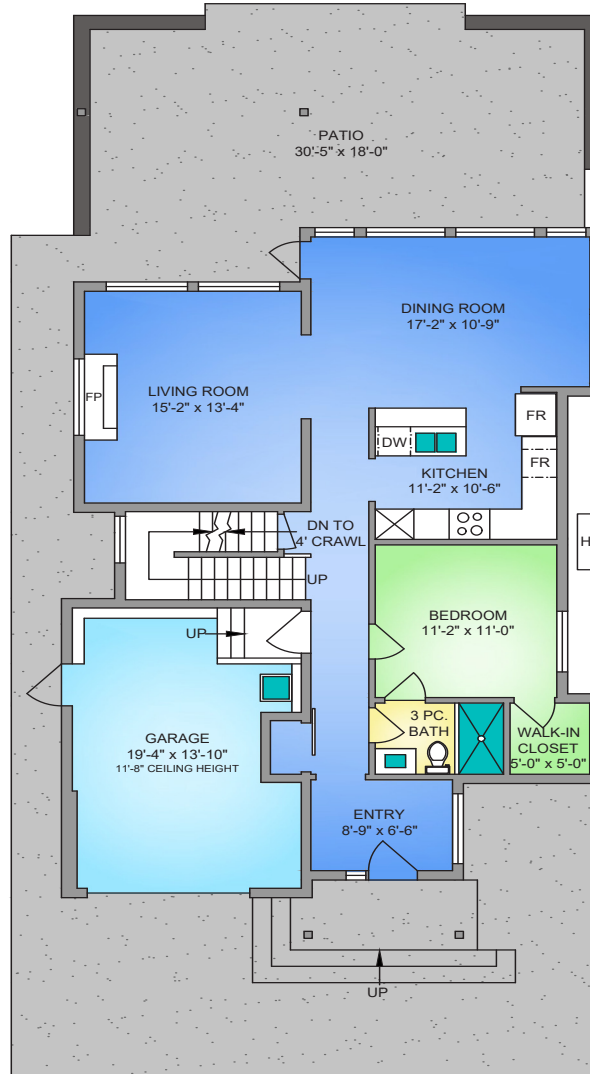
Property Floorplan

Main 1,079 sq. ft.
Upper 729 sq. ft.

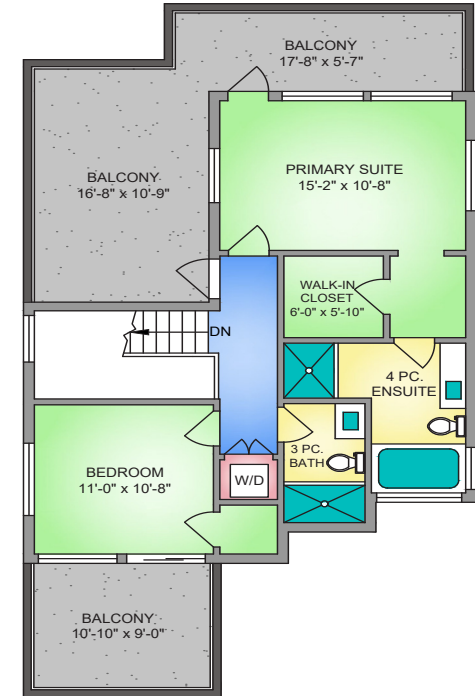
TOTAL AREA 1,808 sq. ft.

Garage 295 sq. ft.
Deck/Patio 881 sq. ft.

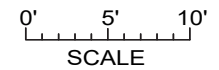
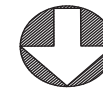
MAIN FLOOR 1079 SQ. FT. 10' CEILING HEIGHT



UPPER FLOOR 729 SQ. FT. 9' CEILING HEIGHT



NORTH



* DIMENSIONS ARE FOR REFERENCE PURPOSES ONLY AND ARE NOT TAKEN FROM ORIGINAL BLUEPRINTS



Property Photos

EXTERIOR





Property Photos

INTERIOR





Property Photos

KITCHEN





Property Photos

PRIMARY BEDROOM AND ENSUITE





Property Photos

EXTERIOR



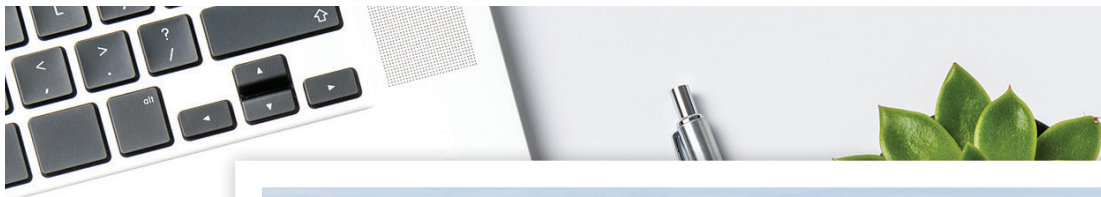


Location

(GIS) MAPPING



Set in the heart of Deep Cove in North Saanich, this exceptional location captures the essence of West Coast living on the Saanich Peninsula. Surrounded by rolling farmland, quiet country roads, and glimpses of the ocean, Deep Cove is cherished for its peaceful atmosphere and natural beauty. Residents enjoy easy access to local farms, beaches, marinas, and scenic walking trails, along with the charm of nearby Sidney's shops, cafés, and waterfront. With convenient connections to the BC Ferries terminal and Victoria International Airport, this sought-after enclave offers a rare blend of rural tranquility and everyday convenience.





CEL · 250 818 9338 | TEL · 778 426 2262

Chace@ChaceWhitson.com | ChaceWhitson.com

2411 · Bevan Avenue Sidney, BC · V8L 4M9





**CHACE
WHITSON**
PERSONAL REAL ESTATE CORPORATION



Chace Whitson | 250.818.9338 | Chace@ChaceWhitson.com | ChaceWhitson.com