

# 11392 CHALET RD

North Saanich





FOR SALE



# 11392 Chalet Rd

North Saanich

SUMMARY OVERVIEW



LISTING PRICE: \$3,599,000



LIVING AREA: 3,151 square feet



LOT AREA 0.37 acres



BEDROOMS: 4



BATHROOMS: 4

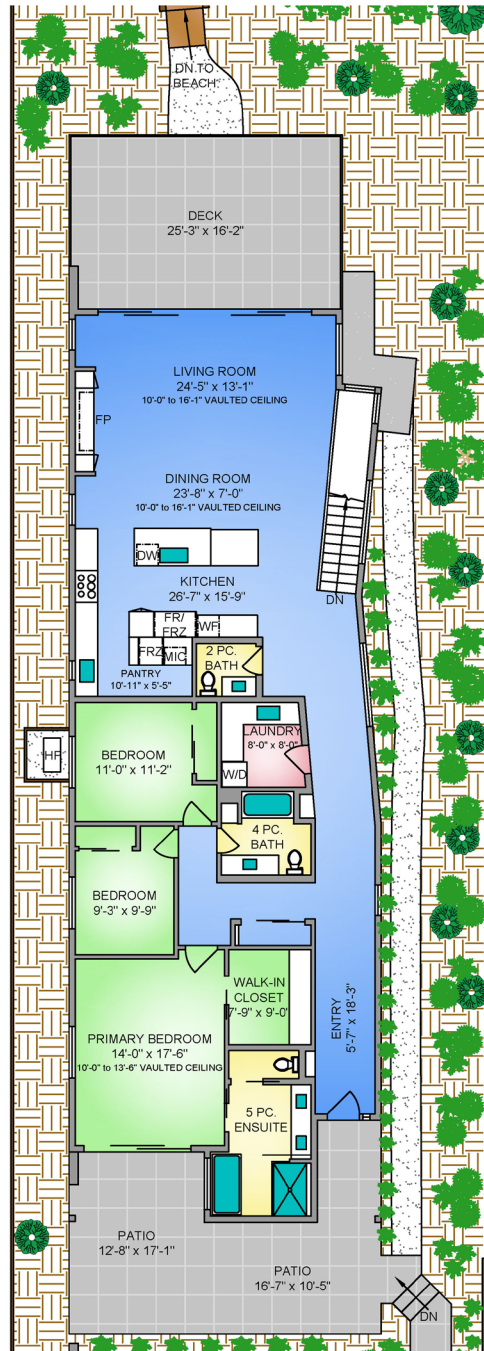


Set on 0.37 acres of southwest-facing waterfront in the coveted Deep Cove neighbourhood of North Saanich, this brand-new contemporary home offers protected ocean views, warm evening sun, and breathtaking sunsets. Built by Villamar Homes, the 3,151 sq.ft. residence blends refined modern design with natural coastal textures. The open-concept main level features soaring 10'–16' ceilings, oversized sliding doors, and seamless indoor-outdoor living to a 400+ sq.ft. oceanfront sundeck. The primary bedroom is conveniently located on the main floor with a private courtyard and spa-inspired ensuite. A gourmet kitchen with premium appliances anchors the living space, ideal for entertaining. The lower level offers 10' ceilings and a flexible layout with potential for a guest or family suite. Enjoy direct beach access for kayaking and paddleboarding, all within an idyllic, walkable seaside community just minutes to local beaches, winery, and café.



# Property Floorplan

Main Level	2,295 sq.ft.
Lower Level	856 sq.ft.
<b>TOTAL AREA</b>	<b>3,151 sq.ft.</b>
Crawl Space	860 sq. ft.
Garage	683 sq.ft.

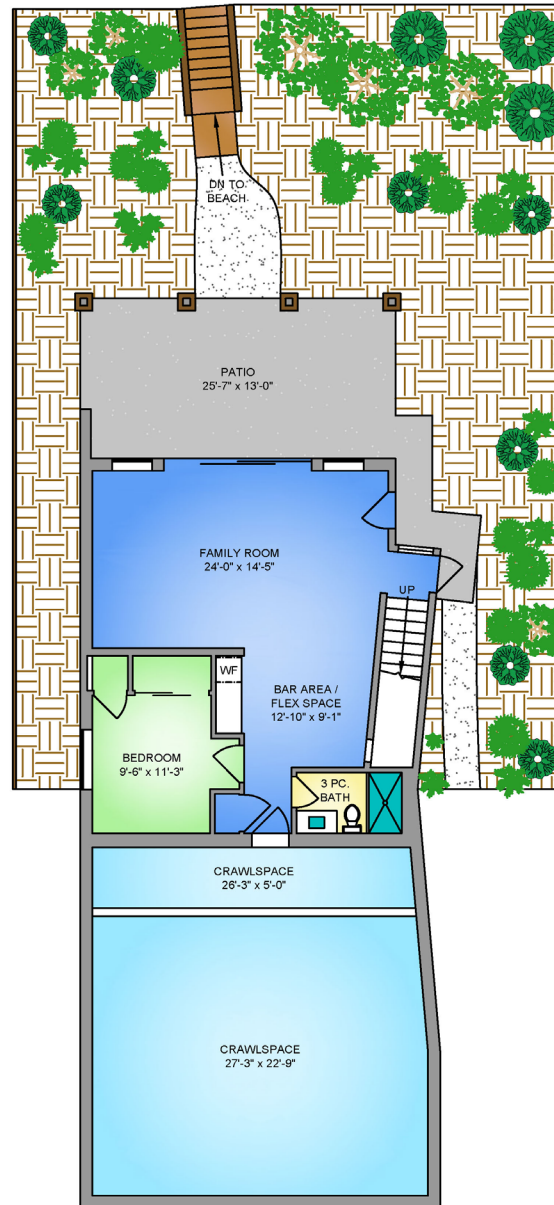


**MAIN FLOOR**  
**2295 SQ. FT.**  
10'-0" to 16'-1" CEILING HEIGHT



# Property Floorplan

Main Level	2,295 sq.ft.
Lower Level	856 sq.ft.
<b>TOTAL AREA</b>	<b>3,151 sq.ft.</b>
Crawl Space	860 sq. ft.
Garage	683 sq.ft.



**LOWER FLOOR**  
**856 SQ. FT.**  
**10'-0" CEILING HEIGHT**

\* DIMENSIONS ARE FOR REFERENCE PURPOSES ONLY AND ARE NOT TAKEN FROM ORIGINAL BLUEPRINTS



# Property Photos

EXTERIOR





# Property Photos

INTERIOR





# Property Photos

## KITCHEN





# Property Photos

## PRIMARY BEDROOM AND ENSUITE





# Property Photos

INTERIOR





# Property Photos

INTERIOR





# Property Photos

EXTERIOR





# Features & Finishes

## QUALITY WITHOUT COMPROMISE

### MAIN LEVEL FEATURES:

- Wide-plank engineered European oak flooring throughout
- Elegant quartz countertops in kitchen, baths & laundry
- Custom rift-cut white oak millwork and slat wood feature walls
- Designer lighting throughout
- Vaulted ceilings
- Spa-inspired ensuite:
  - Kalia thermostatic shower system with rainhead + handshower
  - Dual Kohler Vox vessel sinks
  - Deck-mounted faucet with handshower
  - Heated floors
  - Soaker Tub
  - LED-lit mirror and matte black electric towel warmer
- 2 additional bedrooms with plush Shaw carpet
- Contemporary bathrooms with quartz counters

### QUALITY CONSTRUCTION

- 2-5-10 Pacific new home warranty:
  - 2 years material and labour*
  - 5 year building envelope*
  - 10 year structural*

## GOURMET KITCHEN

- Chef-inspired kitchen
- Touchless Riobel matte black faucet
- Blanco Precis Coal Black sink
- Wall-mounted Delta pot filler
- Custom cabinetry + slat wood paneling
- Feature pendant lights over island
- Built in white oak breakfast table
- Pantry with matching cabinetry and counter tops

- 36" Dacor Refrigerator & 24" Dacor Freezer
- 36" Wolf Gas Range
- Bosch Dishwasher 24" Stainless Steel
- LG 5.2 cu.ft. Front Load Steam Washer
- LG 7.4 cu. ft. Ultra Large Capacity Front Load Electric Dryer
- 24" Riva Wine Cooler
- Panasonic Microwave

### LOWER LEVEL FEATURES:

- 10'1" ceilings, Luxury Vinyl Plank
- Quartz counters and matte black plumbing & hardware
- Separate laundry rough-in connections
- Ideal for guests or multigenerational living
- Rough in for full kitchen

### ADDITIONAL FEATURES:

- Recessed puck lighting throughout
- Laundry room with quartz counter tops and extensive cabinetry



# Appliance Specifications

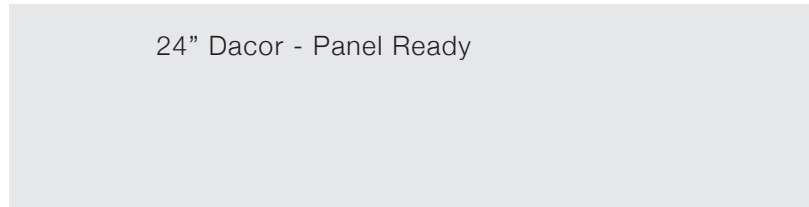


# Appliance Specifications

## KITCHEN



36" Dacor Refrigerator - Panel Ready



24" Dacor - Panel Ready



Riva 24" Wine Cooler



# Appliance Specifications

KITCHEN



Bosch Dishwasher 24" 300 Series Scoop Handle  
Dishwasher Stainless Steel



36" Wolf Gas Range - 6 Burners



LG 5.2 cu.ft. Front Load Steam Washer

LG 7.4 cu. ft. Ultra Large Capacity Front Load Electric Dryer with TurboSteam™



## Appliance Specifications

WASHER  
AND DRYER

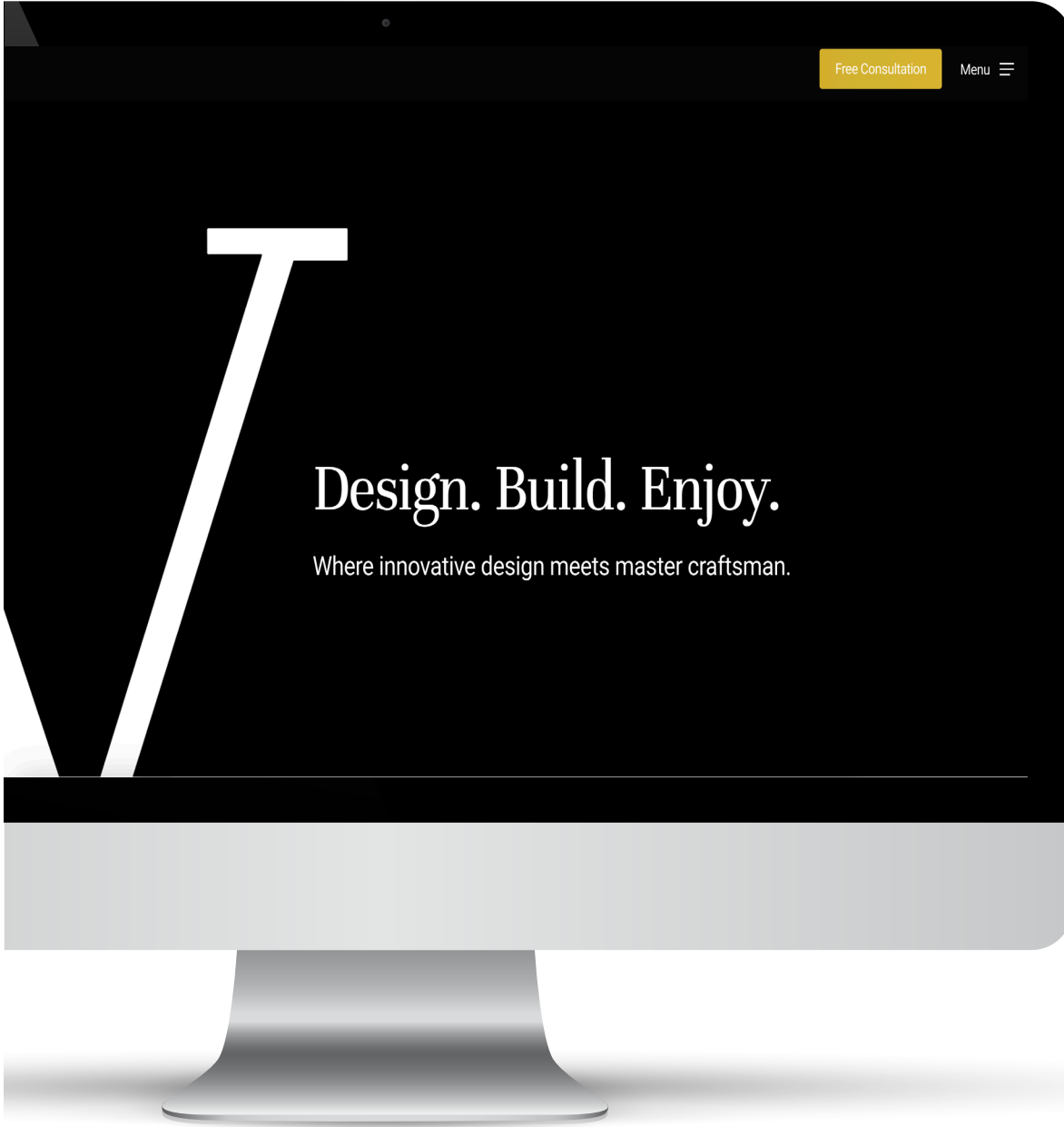


## Location

(GIS) MAPPING



Nestled along the scenic shores of Chalet Road in North Saanich, this stunning home offers a serene coastal setting while remaining close to essential amenities, parks, and community services.



## Villamar Construction

### AWARD WINNING CONTRACTOR

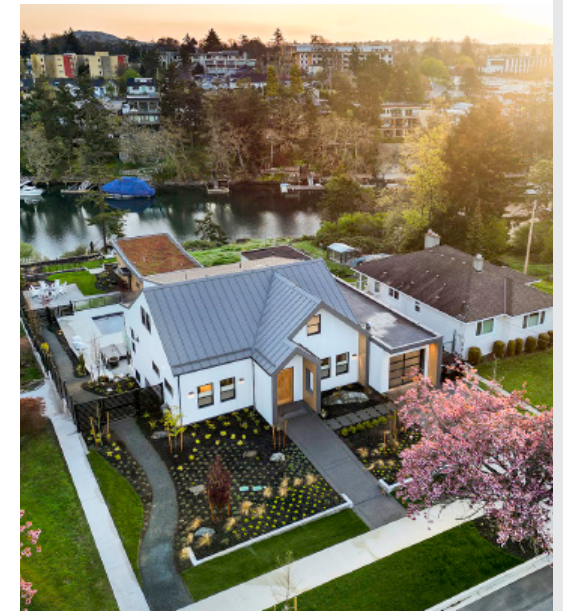
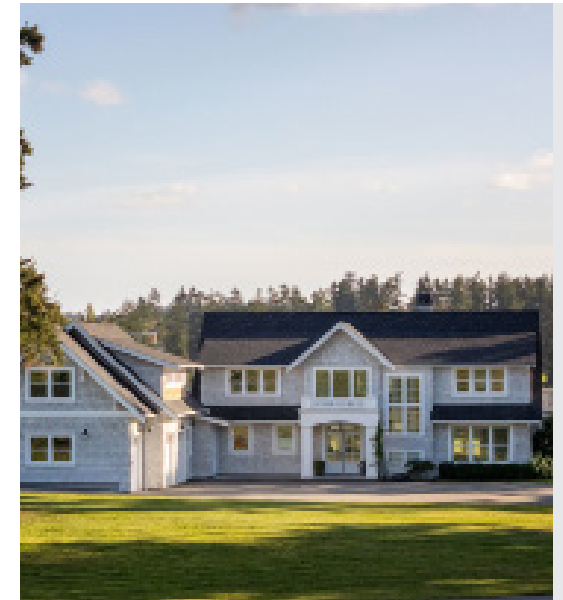
Villamar Construction is a company that specializes in the quality construction of custom single-family homes and renovations, as well as commercial build outs and tenant improvements (with a specialty in medical/dental). We are typically involved from the planning and permitting right through to final occupancy and walkthrough. This includes monitoring site safety, quality control, inspections and communicating with design and consultants.



## Past Projects

WHERE INNOVATIVE DESIGN  
MEETS MASTER CRAFTSMAN.

VILLAMARCONSTRUCTION.COM





Villamar  
construction

CHACE  
WHITSON  
REAL ESTATE GROUP

Macdonald  
Realty



CEL · 250 818 9338 | TEL · 778 426 2262

[Chace@ChaceWhitson.com](mailto:Chace@ChaceWhitson.com) | [ChaceWhitson.com](http://ChaceWhitson.com)

2411 · Bevan Avenue Sidney, BC · V8L 4M9





Chace Whitson | 778.250.9338 | [Chace@ChaceWhitson.com](mailto:Chace@ChaceWhitson.com) | [ChaceWhitson.com](http://ChaceWhitson.com)