



# HORIZON



LUXURY WATERFRONT LIFESTYLE RESIDENCES





FOR SALE



# 1-10393 Allbay Road

Sidney by the Sea

Summary Overview



LISTING PRICE:

\$2,299,000 *Plus GST*



LIVING AREA:

1,807 sq. ft.



BEDROOMS:

3



BATHROOMS:

3



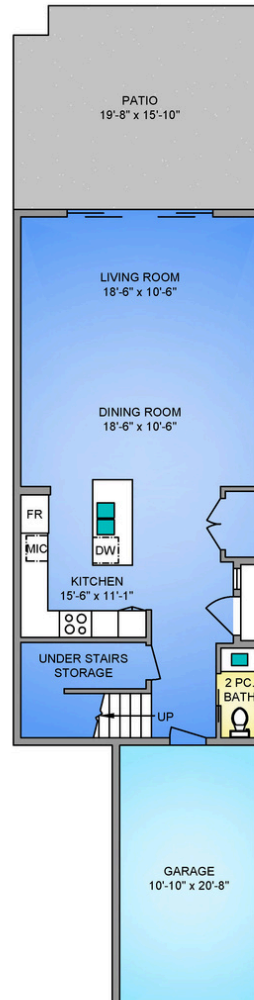
Spectacular low-bank waterfront residence showcasing refined finishes and forward-thinking construction throughout. This thoughtfully designed three-bedroom, three-bathroom home offers 1,807 sq ft of exceptional quality and timeless appeal. The open-concept main living space is highlighted by nine-foot ceilings and expansive windows that frame sweeping ocean views and flood the home with natural light. The impressive primary suite features oversized floor-to-ceiling windows capturing Mt. Baker and open water vistas, a spa-inspired ensuite, and a generous walk-in closet. The chef's kitchen anchors the home with rich two-toned cabinetry, professional-grade appliances, and sleek quartz countertops. Outdoor living is seamless with a spacious waterfront patio, easy-care landscaping, and direct beach access. Steps to beaches, shops, dining, and transit, with ferries and the airport just minutes away, this is a rare opportunity to own a waterfront residence that blends luxury, convenience, and coastal charm in Sidney's most sought-after location.



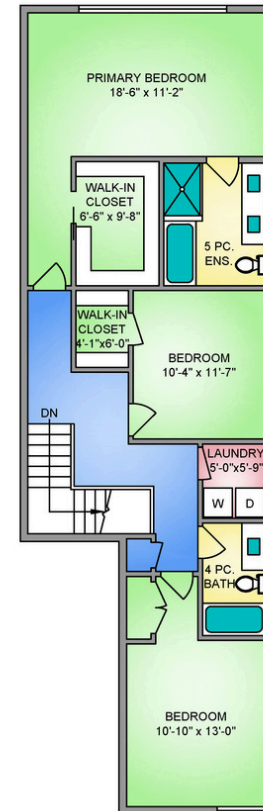
# Property Floorplan

Main Floor	776 sq. ft.
Upper Floor	1,031 sq. ft.
<b>TOTAL LIVING</b>	<b>1,807 sq. ft.</b>
Patio	244 sq. ft.

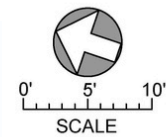
## MAIN FLOOR 776 SQ. FT. 9'-0" CEILING HEIGHT



## UPPER FLOOR 1031 SQ. FT. 8'-0" CEILING HEIGHT



NORTH



\*Dimensions are for reference purposes only and are not taken from original blueprints



# Property Photos

Exterior





# Property Photos

Interior





# Property Photos

Interior





# Property Photos

Exterior







# Features & Finishes

## Quality Without Compromise

### PRIMARY BEDROOM & SPA-INSPIRED EN-SUITE

- Walk-in closet with custom millwork
- Luxurious en-suite
- Floor-to-ceiling windows
- Tray ceiling
- East-facing ocean views
- Quartz countertops
- Double vanity
- In-floor radiant heat
- Dual flush toilet
- Large walk-in shower with rain head and wall-mounted wand
- Linen closet millwork

### MAIN BATHROOM

- Custom millwork with quartz countertop
- Tub shower combo
- Dual flush toilet
- In-floor radiant heat

### POWDER ROOM

- Custom millwork with quartz countertop
- Dual Flush toilet
- In-floor radiant heat

### EXTERIOR FEATURES

- Steel front door with frosted glass panels
- Gas and electric rough-ins for outdoor kitchen
- Low-lustre hardie board
- Marble feature wall
- Interlocking brick driveway with concrete pathway accents
- Coragated steel siding

\*Features and finishes are subject to change at the developer's discretion



# Features & Finishes

## Quality Without Compromise

### GOURMET KITCHEN

- Chef-inspired kitchen
- Quartz countertops
- Custom millwork with soft-close drawers and cupboards
- Tray ceiling
- Countertop wireless cell phone charger
- Quartz backsplash
- Window feature backsplash
- Gourmet SS appliances:
  - Riva 36" French Door Panel Ready Refrigerator
  - Riva 30" Wall Mount Chimney Hood
  - Panasonic 24" Microwave
  - Miele 24" Built-In Coffee Machine
  - Miele 30" All Electric Induction Range
  - Bosch 24" Custom Panel Dishwasher
  - LG Wash Tower with Centre Control 5.2 cu.ft. Washer and 7.4 cu.ft. dryer

### ADDITIONAL CONVENIENCE

- Heat pump with air conditioning
- Gas hot water on demand
- Hydronic in-floor heating throughout
- Electric vehicle charging station roughed-in
- Full-size laundry room
- Fire suppression
- Electric blinds
- Window screens
- Single-car garage
- Engineered hardwood flooring throughout
- Epoxy garage flooring
- Gas firepit
- Stairs to the beach

### QUALITY CONSTRUCTION

Homecare Program, Traveler's 2-5-10 new home warranty:

- 2 years material and labour
- 5 year building envelope
- 10 year structural

\*Features and finishes are subject to change at the developer's discretion

ChaceWhitson.com // Helping *you* make the right decision.



# Appliance Specifications

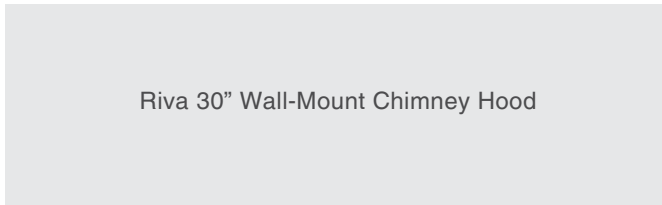


# Appliance Specifications

## Kitchen



Miele 30" All Electric Induction Range



Riva 30" Wall-Mount Chimney Hood



Panasonic 24" Microwave

\*Features and finishes are subject to change at the developer's discretion

ChaceWhitson.com // Helping *you* make the right decision.



# Appliance Specifications

Kitchen

Riva 36" French Door Panel Ready Refrigerator



Miele 24" Built-In Coffee Machine

Bosch 24" Custom Panel Dishwasher



\*Features and finishes are for illustration purposes only and are subject to change at the developer's discretion



# Appliance Specifications

---

Laundry



LG Wash Tower with Centre Control 5.2  
cu.ft. Washer and 7.4 cu.ft. dryer

\*Features and finishes are subject to change at the developer's discretion



## Location (GIS) Mapping



*Nestled along scenic Allbay Road in Sidney, this charming location offers the perfect blend of coastal serenity and everyday convenience. Just steps from the ocean, you'll enjoy tranquil walks, fresh sea air, and stunning shoreline views, all while being minutes from Sidney's vibrant shops, restaurants, and local parks. This peaceful, sought-after neighbourhood embodies a relaxed seaside lifestyle with easy access to amenities, ferry terminals, and the airport—making it ideal for both quiet living and connected commuting.*



**CUBE**  
PROJECT MANAGEMENT

SERVICES

PROJECTS



## Cube Project Management

Award Winning Contractor



## Previous Projects

7 Lotus Street

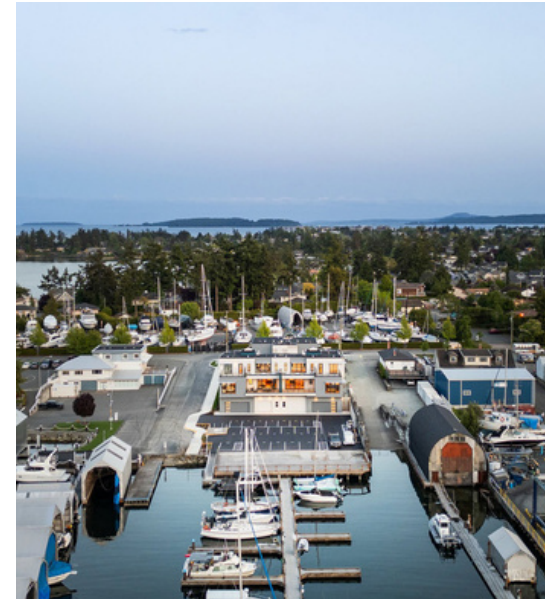


\*



## Previous Projects

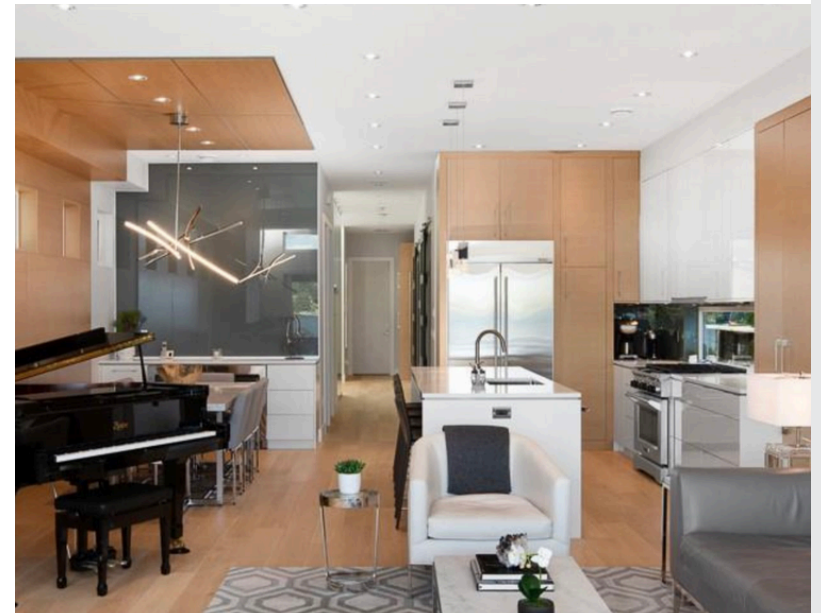
Harbour Haven





## Previous Projects

10305 Resthaven Dr



\*





# CHACE WHITSON

REAL ESTATE GROUP

CEL · 250 818 9338 | TEL · 778 426 2262

[Chace@ChaceWhitson.com](mailto:Chace@ChaceWhitson.com) | [ChaceWhitson.com](http://ChaceWhitson.com)

2411 · Bevan Avenue Sidney, BC · V8L 4M9





Chace Whitson | 250.818.9338 | [Chace@ChaceWhitson.com](mailto:Chace@ChaceWhitson.com) | [ChaceWhitson.com](http://ChaceWhitson.com)