

# 11321 CHALET RD

North Saanich





FOR SALE



# 11321 Chalet Rd

North Saanich

SUMMARY OVERVIEW



LISTING PRICE: \$2,399,000



LIVING AREA: 4,266 sq. ft.



BEDROOMS: 5



BATHROOMS: 3



Set on a private 1.05-acre lot in one of the Peninsula's most desirable neighbourhoods, this fully renovated West Coast family home offers sweeping west-facing ocean views, outstanding sun exposure, and exceptional outdoor living. The 4,266 sq ft residence includes 5 bedrooms, 3 bathrooms, including a versatile two bedroom suite—ideal for extended family or guests. The light-filled main level features 13-ft vaulted ceilings and an open, functional layout with French doors leading to a generous sundeck with frameless glass railings, perfectly positioned for sunsets. The south-facing grounds are a true highlight, showcasing lush, meticulously landscaped gardens with ponds, vibrant blooms, vegetable beds, plus a new sauna and hot tub. Thoughtful upgrades include solar power, heat pump, and A/C for year-round comfort and efficiency. Completely move-in ready and steps to Deep Cove Winery, Chalet Restaurant, beaches, and scenic trails.

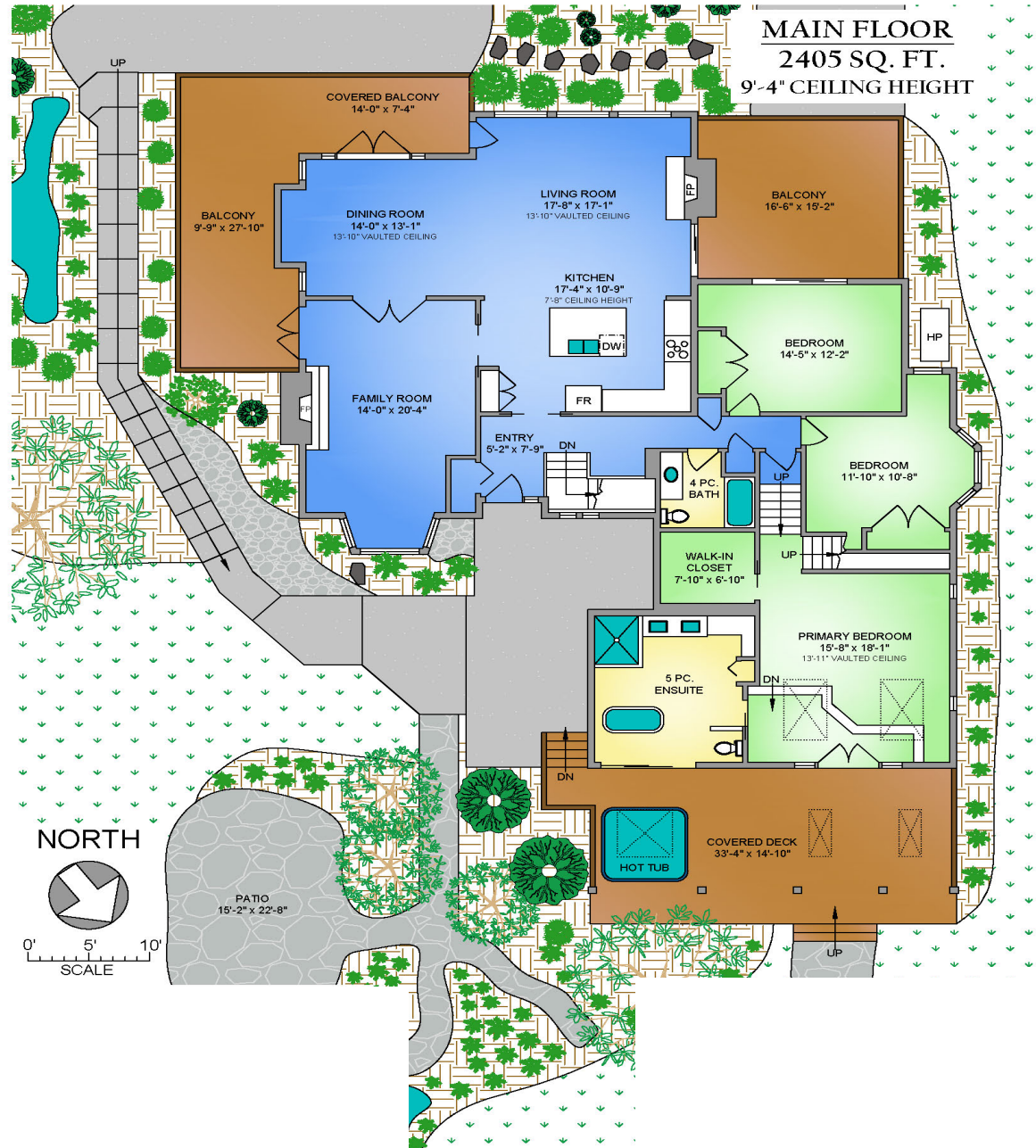


# Property Floorplan

Main 2,405 sq. ft.  
Upper 258 sq. ft.  
Lower 1,603 sq. ft.

**TOTAL AREA 4,266 sq. ft.**

Garage 292 sq.ft.  
Deck/Patio 1,648 sq.ft.



\* DIMENSIONS ARE FOR REFERENCE PURPOSES ONLY AND ARE NOT TAKEN FROM ORIGINAL BLUEPRINTS



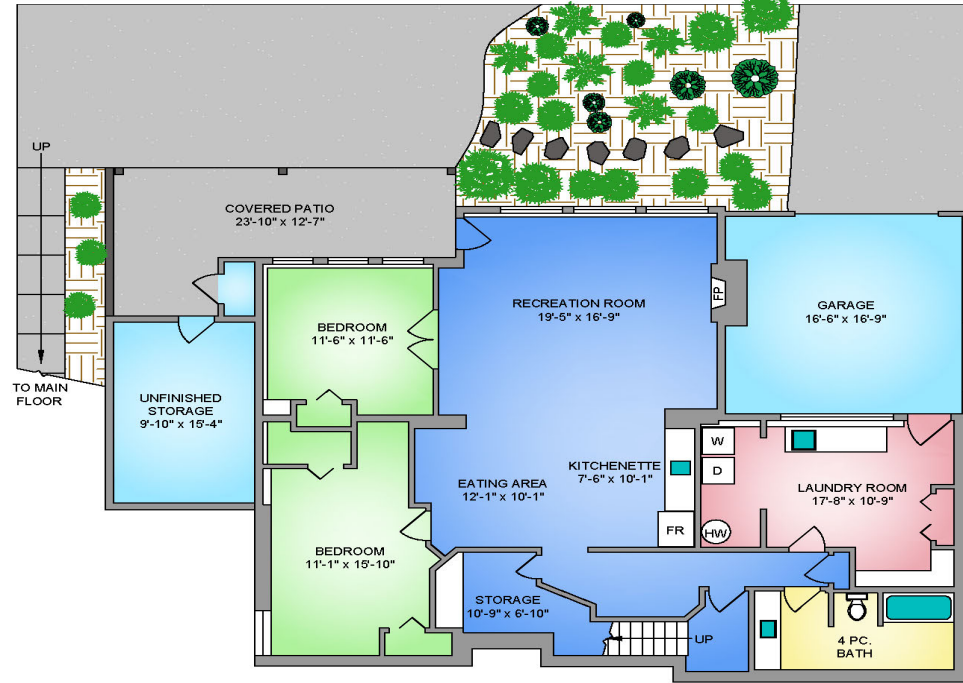
# Property Floorplan

Main	2,405 sq. ft.
Upper	258 sq. ft.
Lower	1,603 sq. ft.

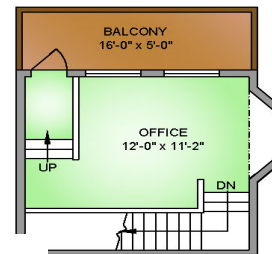
**TOTAL AREA 4,266 sq. ft.**

Garage	292 sq.ft.
Deck/Patio	1,648 sq.ft.

## LOWER FLOOR 1603 SQ. FT. 7'-8" CEILING HEIGHT



## UPPER FLOOR 258 SQ. FT. 10'-0" VAULTED HEIGHT



NORTH



0' 5' 10'  
SCALE

\* DIMENSIONS ARE FOR REFERENCE PURPOSES ONLY AND ARE NOT TAKEN FROM ORIGINAL BLUEPRINTS



# Property Photos

EXTERIOR





# Property Photos

INTERIOR





# Property Photos

KITCHEN





# Property Photos

## PRIMARY BEDROOM & ENSUITE





# Property Photos

INTERIOR

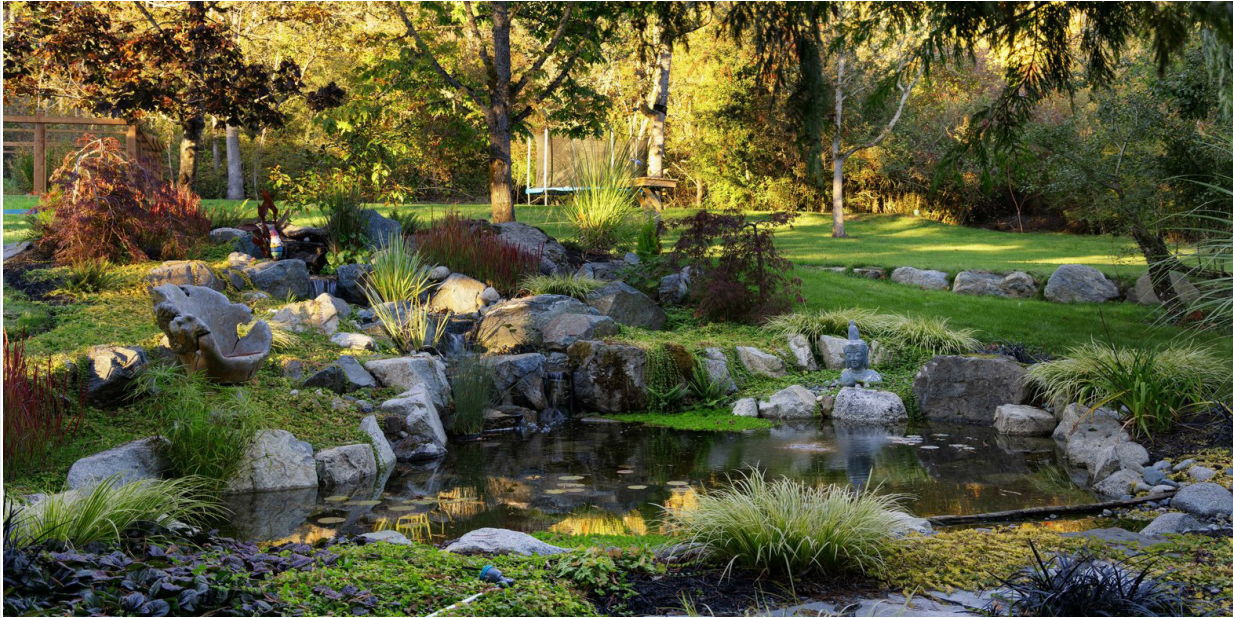




# Property Photos

INTERIOR





# Property Photos

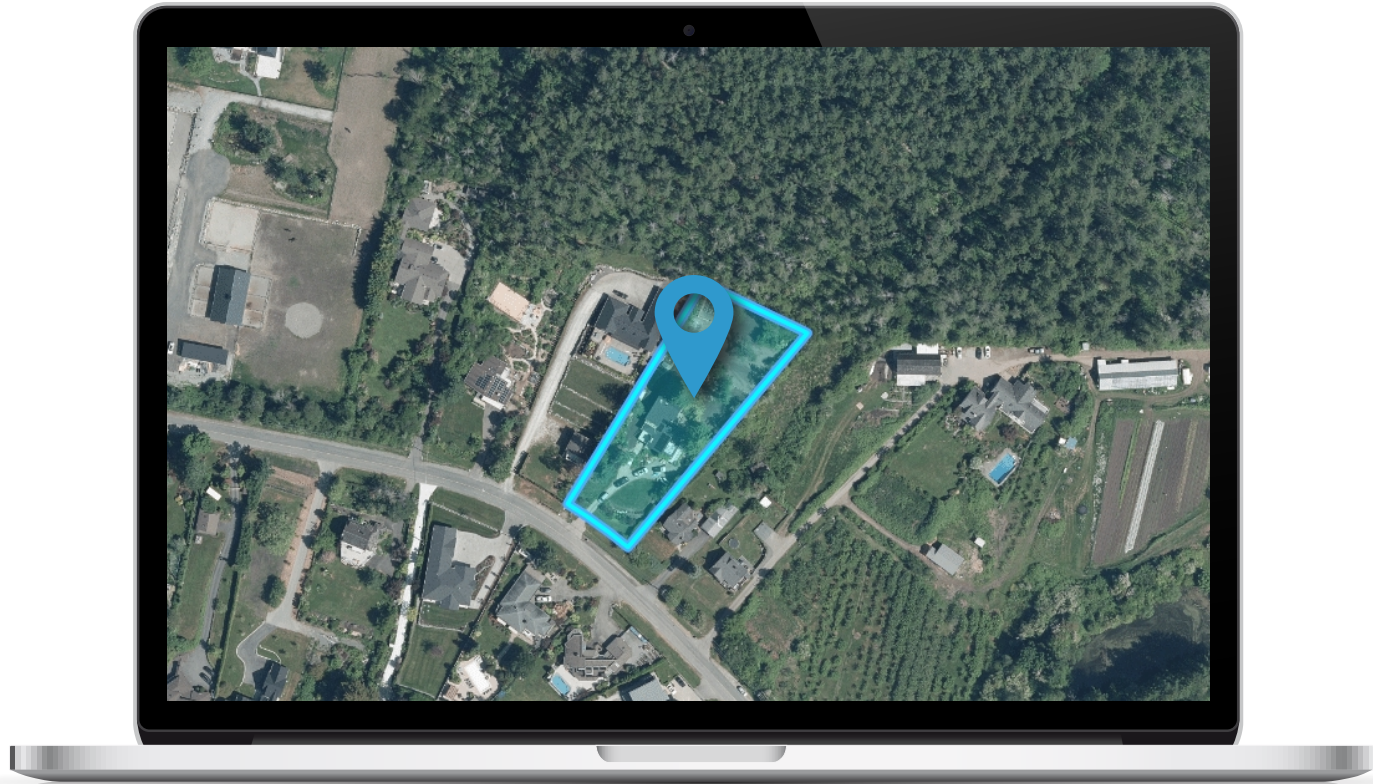
EXTERIOR

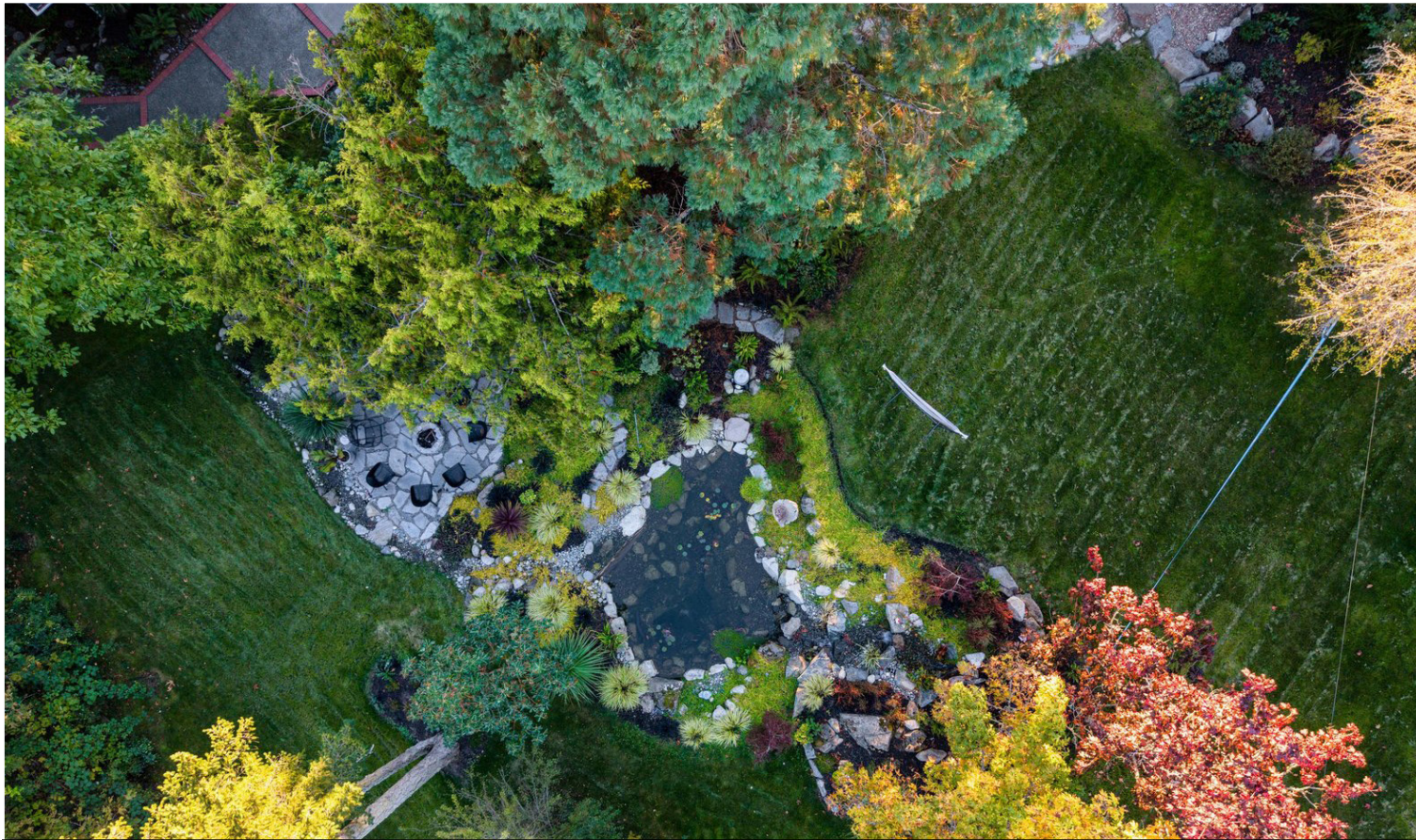




# Location

(GIS) MAPPING







CEL · 250 818 9338 | TEL · 778 426 2262

[Chace@ChaceWhitson.com](mailto:Chace@ChaceWhitson.com) | [ChaceWhitson.com](http://ChaceWhitson.com)

2411 · Bevan Avenue Sidney, BC · V8L 4M9





**CHACE  
WHITSON**  
PERSONAL REAL ESTATE CORPORATION



Chace Whitson | 250.818.9338 | [Chace@ChaceWhitson.com](mailto:Chace@ChaceWhitson.com) | [ChaceWhitson.com](http://ChaceWhitson.com)