



11321 CHALET RD

North Saanich





FOR SALE



11321 Chalet Rd

North Saanich

SUMMARY OVERVIEW



LISTING PRICE:

\$2,499,000



LIVING AREA:

4,266 sq. ft.



BEDROOMS:

5



BATHROOMS:

3



Set on a private 1.05-acre lot in one of the Peninsula's most desirable neighbourhoods, this fully renovated West Coast family home offers sweeping west-facing ocean views, outstanding sun exposure, and exceptional outdoor living. The 4,266 sq ft residence includes 5 bedrooms, 3 bathrooms, including a versatile two bedroom suite—ideal for extended family or guests. The light-filled main level features 13-ft vaulted ceilings and an open, functional layout with French doors leading to a generous sundeck with frameless glass railings, perfectly positioned for sunsets. The south-facing grounds are a true highlight, showcasing lush, meticulously landscaped gardens with ponds, vibrant blooms, vegetable beds, plus a new sauna and hot tub. Thoughtful upgrades include solar power, heat pump, and A/C for year-round comfort and efficiency. Completely move-in ready and steps to Deep Cove Winery, Chalet Restaurant, beaches, and scenic trails.

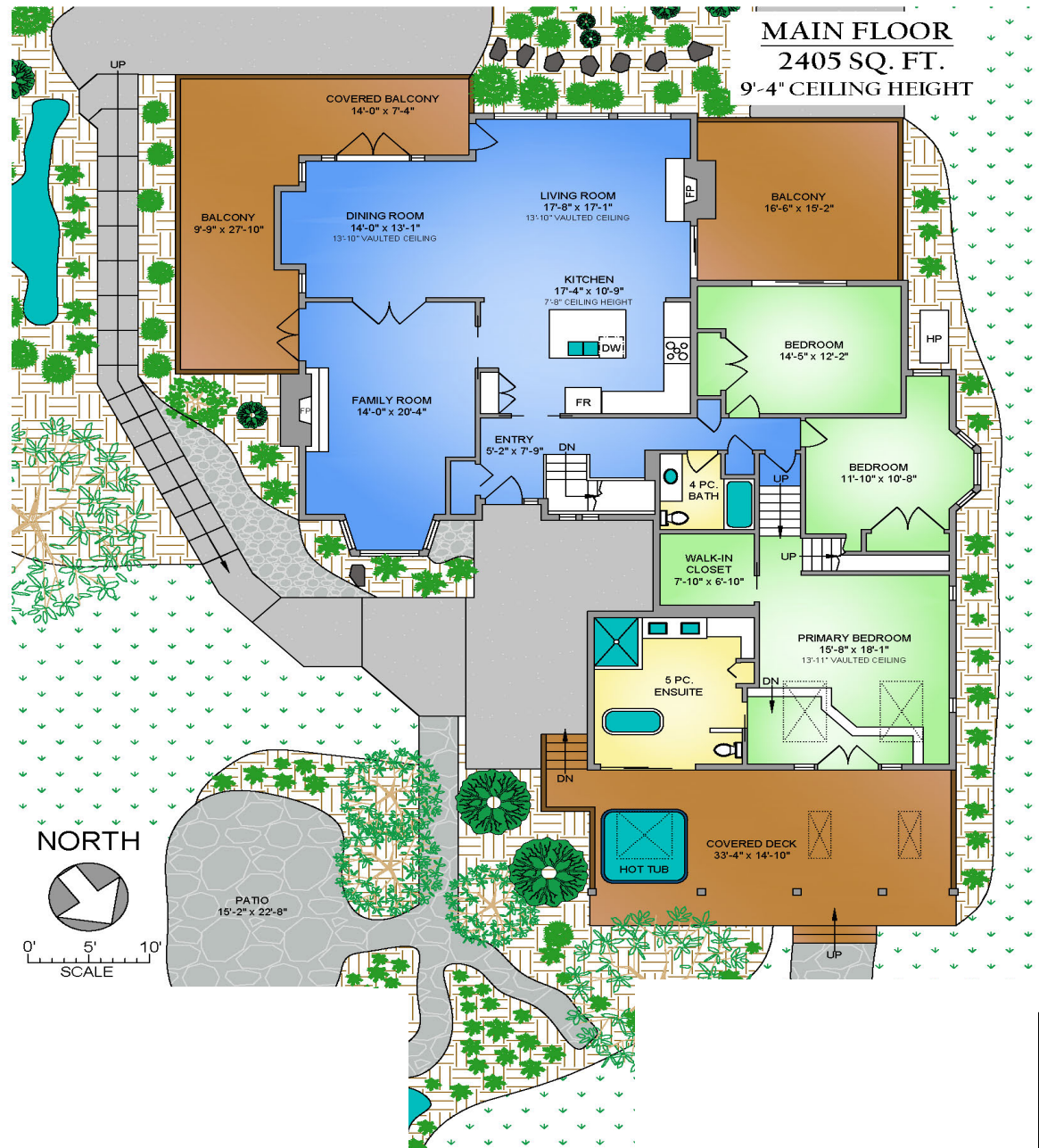


Property Floorplan

Main	2,405 sq. ft.
Upper	258 sq. ft.
Lower	1,603 sq. ft.

TOTAL AREA 4,266 sq. ft.

Garage	292 sq.ft.
Deck/Patio	1,648 sq.ft.



* DIMENSIONS ARE FOR REFERENCE PURPOSES ONLY AND ARE NOT TAKEN FROM ORIGINAL BLUEPRINTS



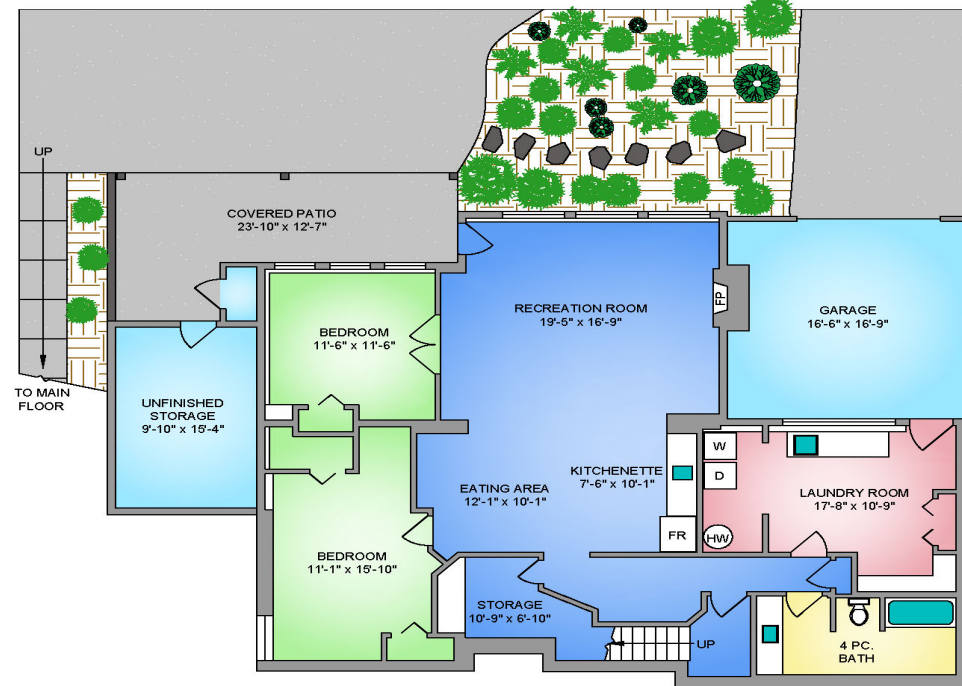
Property Floorplan

Main	2,405 sq. ft.
Upper	258 sq. ft.
Lower	1,603 sq. ft.

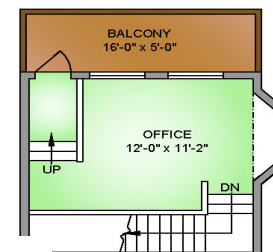
TOTAL AREA 4,266 sq. ft.

Garage	292 sq.ft.
Deck/Patio	1,648 sq.ft.

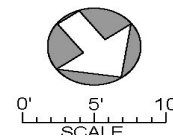
LOWER FLOOR 1603 SQ. FT. 7'-8" CEILING HEIGHT



UPPER FLOOR 258 SQ. FT. 10'-0" VAULTED HEIGHT



NORTH



* DIMENSIONS ARE FOR REFERENCE PURPOSES ONLY AND ARE NOT TAKEN FROM ORIGINAL BLUEPRINTS



Property Photos

EXTERIOR





Property Photos

INTERIOR





Property Photos

KITCHEN





Property Photos

PRIMARY BEDROOM & ENSUITE





Property Photos

INTERIOR

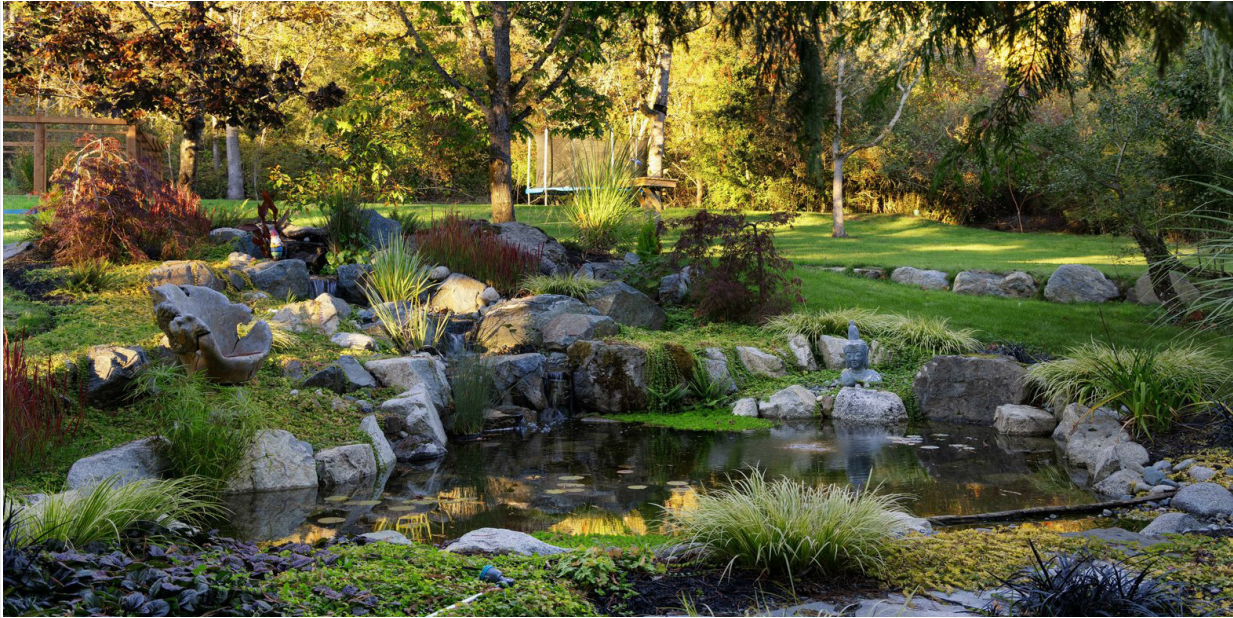




Property Photos

INTERIOR





Property Photos

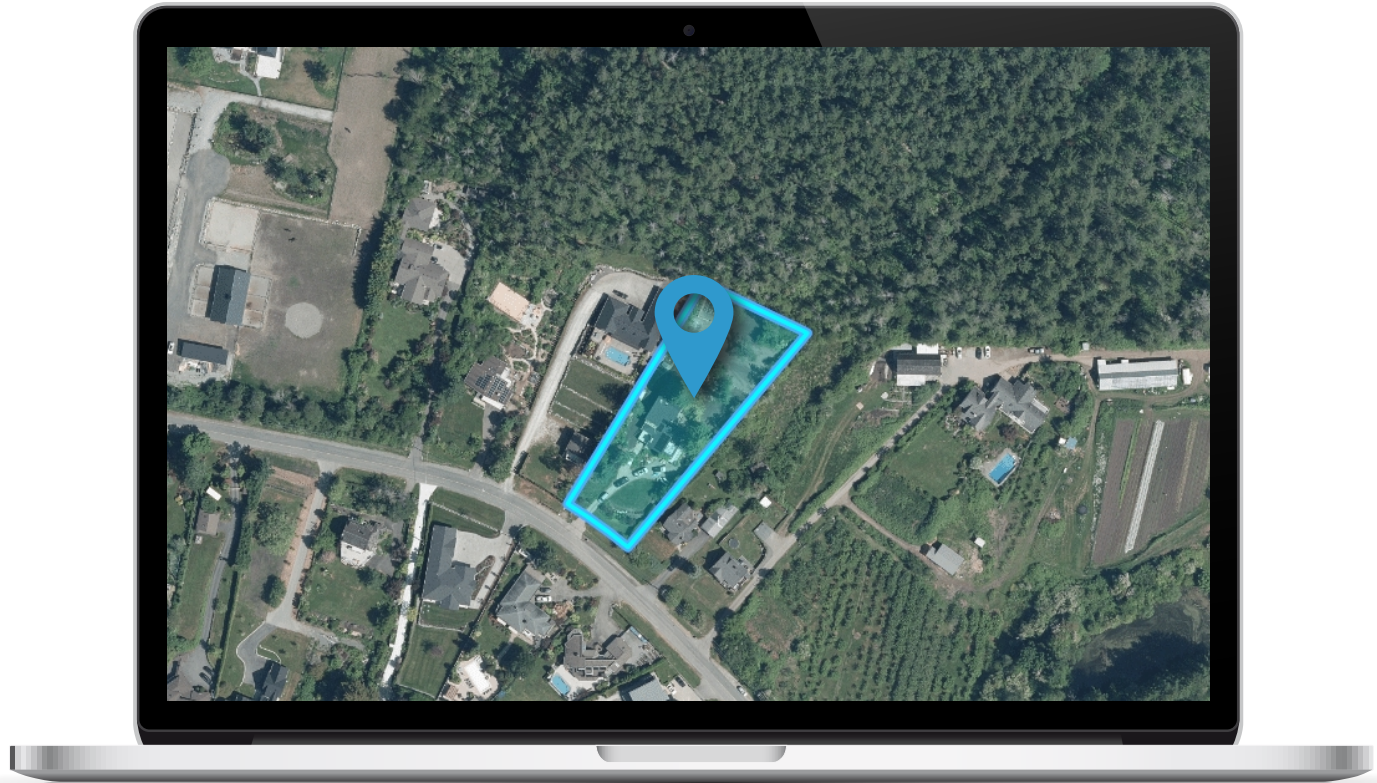
EXTERIOR

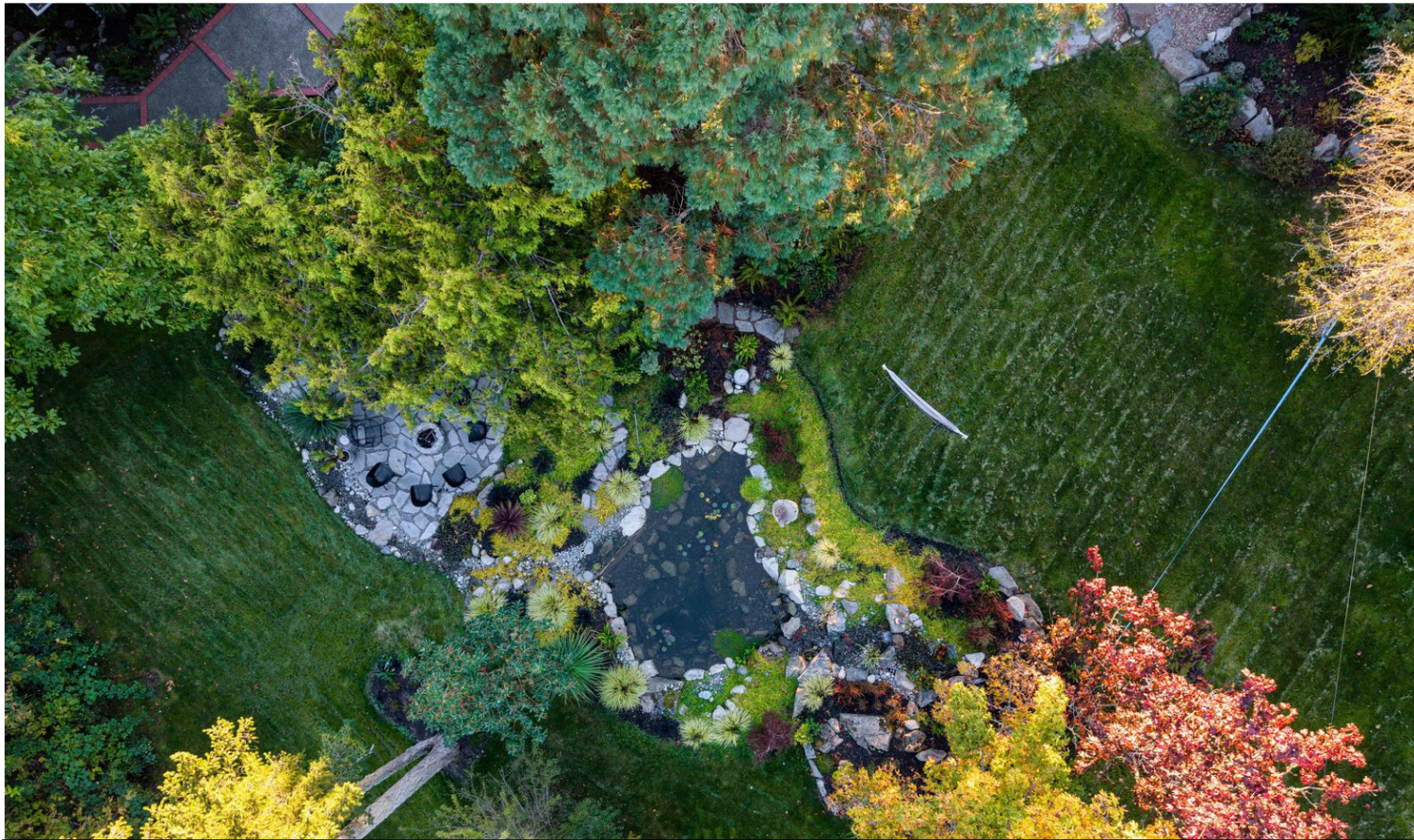




Location

(GIS) MAPPING





**CHACE
WHITSON**
PERSONAL REAL ESTATE CORPORATION



**Macdonald
Realty**



CEL • 250 818 9338 | TEL • 778 426 2262

Chace@ChaceWhitson.com | ChaceWhitson.com

2411 • Bevan Avenue Sidney, BC • V8L 4M9





Chace Whitson | 250.818.9338 | Chace@ChaceWhitson.com | ChaceWhitson.com