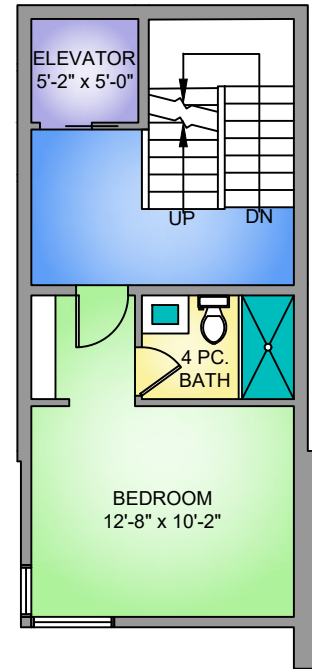
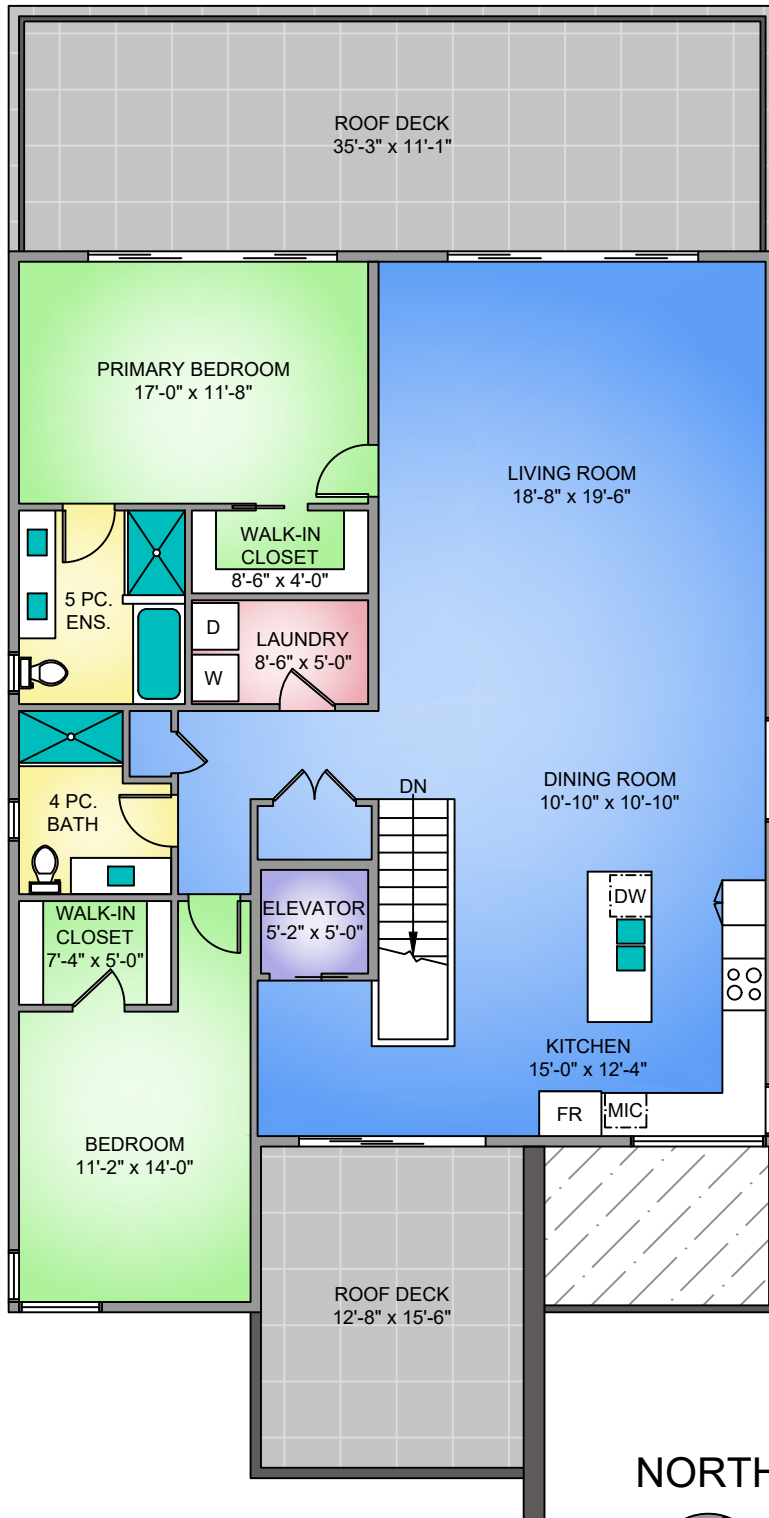
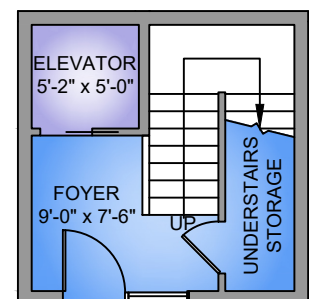


THIRD FLOOR
1651 SQ. FT.
10'-0" CEILING HEIGHT

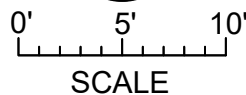
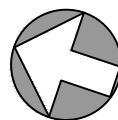
LOWER FLOOR
400 SQ. FT.
8'-0" CEILING HEIGHT



ENTRY FLOOR
182 SQ. FT.
9'-0" CEILING HEIGHT



NORTH



UNIT 302 - 10393 ALLBAY ROAD
APRIL 20, 2026

PREPARED FOR THE EXCLUSIVE USE OF CHACE WHITSON
PLANS MAY NOT BE 100% ACCURATE, IF CRITICAL BUYER TO VERIFY.

FLOOR	AREA (SQ. FT.)	
	FINISHED	DECK
MAIN	1651	590
LOWER	400	-
ENTRY	182	-
TOTAL	2233	590