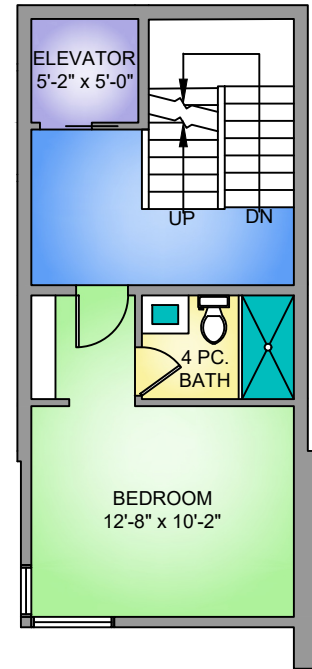
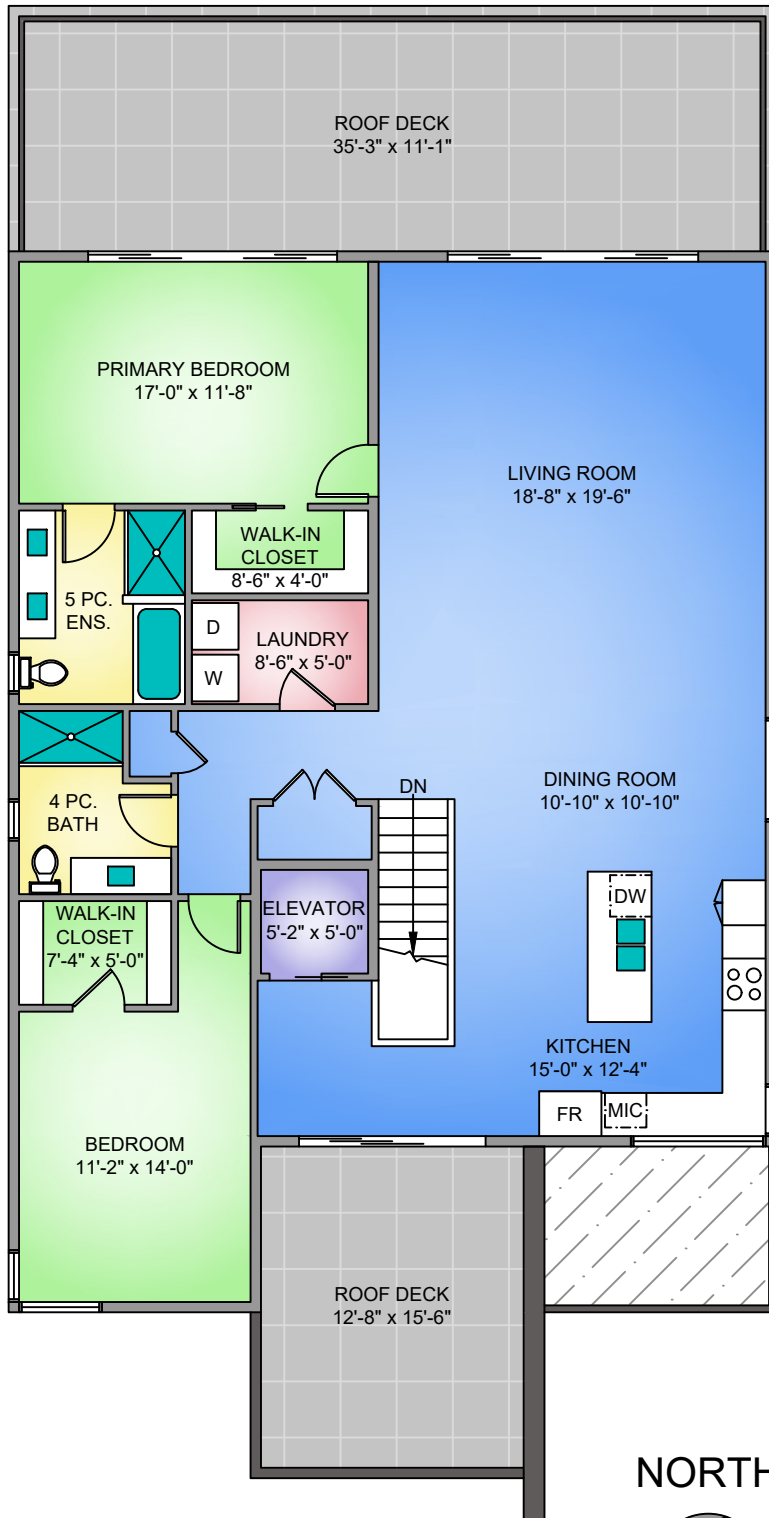
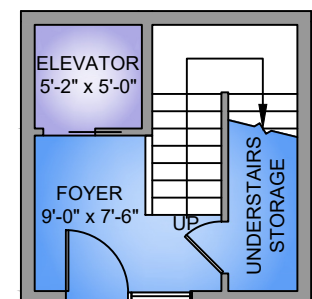


**THIRD FLOOR**  
**1651 SQ. FT.**  
10'-0" CEILING HEIGHT

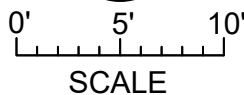
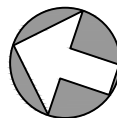
**LOWER FLOOR**  
**400 SQ. FT.**  
8'-0" CEILING HEIGHT



**ENTRY FLOOR**  
**182 SQ. FT.**  
9'-0" CEILING HEIGHT



NORTH



UNIT 3 - 10393 ALLBAY ROAD APRIL 20, 2026		
PREPARED FOR THE EXCLUSIVE USE OF CHACE WHITSON PLANS MAY NOT BE 100% ACCURATE. IF CRITICAL BUYER TO VERIFY.		
FLOOR	AREA (SQ. FT.)	
	FINISHED	DECK
MAIN	1651	590
LOWER	400	-
ENTRY	182	-
<b>TOTAL</b>	<b>2233</b>	<b>590</b>