

# 5015 CORDOVA BAY

Saanich





FOR SALE



## 5015 Cordova Bay Rd

Saanich

SUMMARY OVERVIEW



LISTING PRICE: \$1,250,000



LIVING AREA: 1,581 sq. ft.



BEDROOMS: 2



BATHROOMS: 1



First time on the market! This rare waterfront offering presents a golden opportunity to build your dream home in one of Cordova Bay's most desirable locations. Set on a 0.124-acre lot with breathtaking views over Haro Strait and the Gulf Islands, the original 1948 home is ready for its next chapter. Surrounded by multi-million dollar residences, this property offers direct beach access and endless potential to create a custom oceanfront retreat. Enjoy sunrise paddles, beach strolls, and the peaceful rhythm of coastal living - all just minutes from Mt. Doug Park, schools, golf, Broadmead Village, and downtown Victoria. A legacy property in a legacy location - bring your vision and make it yours.

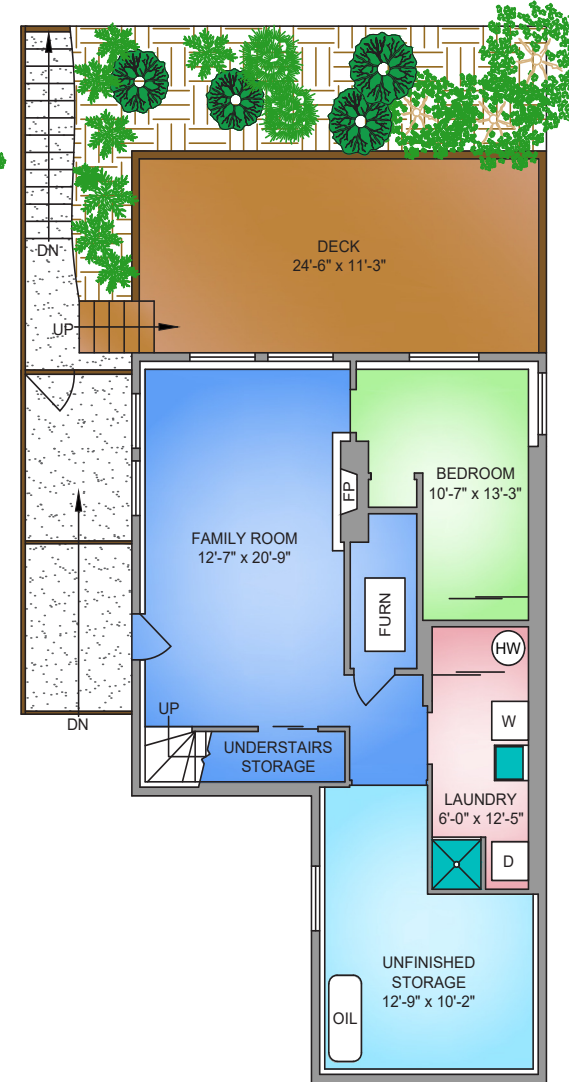
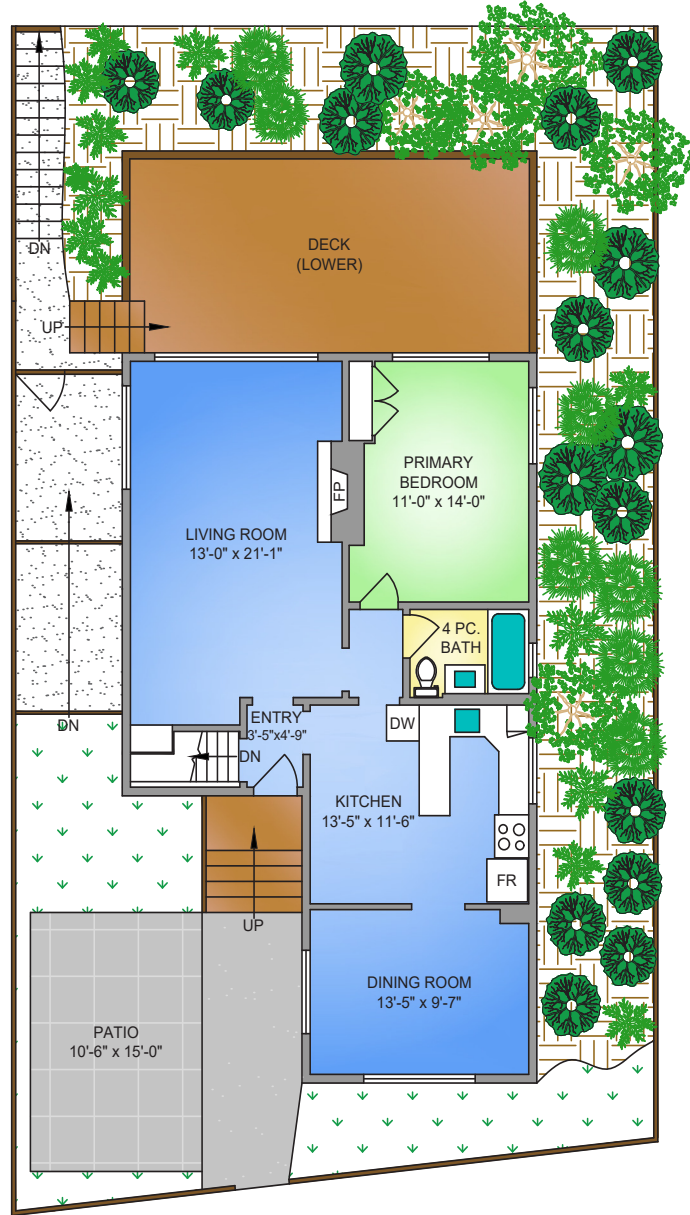


# Property Floorplan

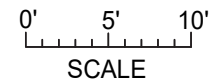
Main Floor 893 sq. ft.  
Lower Floor 688 sq. ft.

**TOTAL AREA 1,581 sq. ft.**

Deck / Patio 431 sq. ft.



NORTH



\* DIMENSIONS ARE FOR REFERENCE PURPOSES ONLY AND ARE NOT TAKEN FROM ORIGINAL BLUEPRINTS



# Property Photos

EXTERIOR





# Property Photos

## KITCHEN





# Property Photos

INTERIOR





# Property Photos

INTERIOR





# Property Photos

EXTERIOR

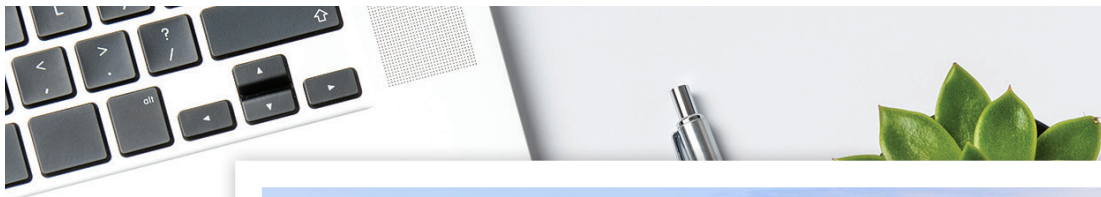




# Location

(GIS) MAPPING





 **CHACE  
WHITSON**  
PERSONAL REAL ESTATE CORPORATION

  
**Macdonald  
Realty**



CEL · 250 818 9338 | TEL · 778 426 2262

[Chace@ChaceWhitson.com](mailto:Chace@ChaceWhitson.com) | [ChaceWhitson.com](http://ChaceWhitson.com)

2411 · Bevan Avenue Sidney, BC · V8L 4M9





**CHACE  
WHITSON**  
PERSONAL REAL ESTATE CORPORATION



Chace Whitson | 250.818.9338 | [Chace@ChaceWhitson.com](mailto:Chace@ChaceWhitson.com) | [ChaceWhitson.com](http://ChaceWhitson.com)