



# 1380 CLOAKE HILL

North Saanich







FOR SALE



# 1380 Cloake Hill Rd

North Saanich

SUMMARY OVERVIEW



LISTING PRICE:

\$2,950,000



LIVING AREA:

5,083 sq. ft.



BEDROOMS:

4



BATHROOMS:

6





Perched atop prestigious Cloake Hill on a 0.99-acre parcel, this 5,083-sqft elegantly appointed home offers panoramic views of Satellite Channel and refined coastal living. Extensively renovated, the 4-bed, 6-bath layout features a sun-filled great room with soaring ceilings, a statement stone fireplace, and seamless access to an oversized sun deck. The chef's kitchen flows into elegant dining spaces, while the upper-level primary retreat boasts vaulted ceilings, dual walk-in closets, and a luxe 6-piece ensuite. Downstairs offers flexible living with a recreation room, family room, office, and a private-entry suite. With over 2,000 sqft of outdoor space and a triple-car garage, this is West Coast living at its best - just minutes to Sidney, parks, and beaches.



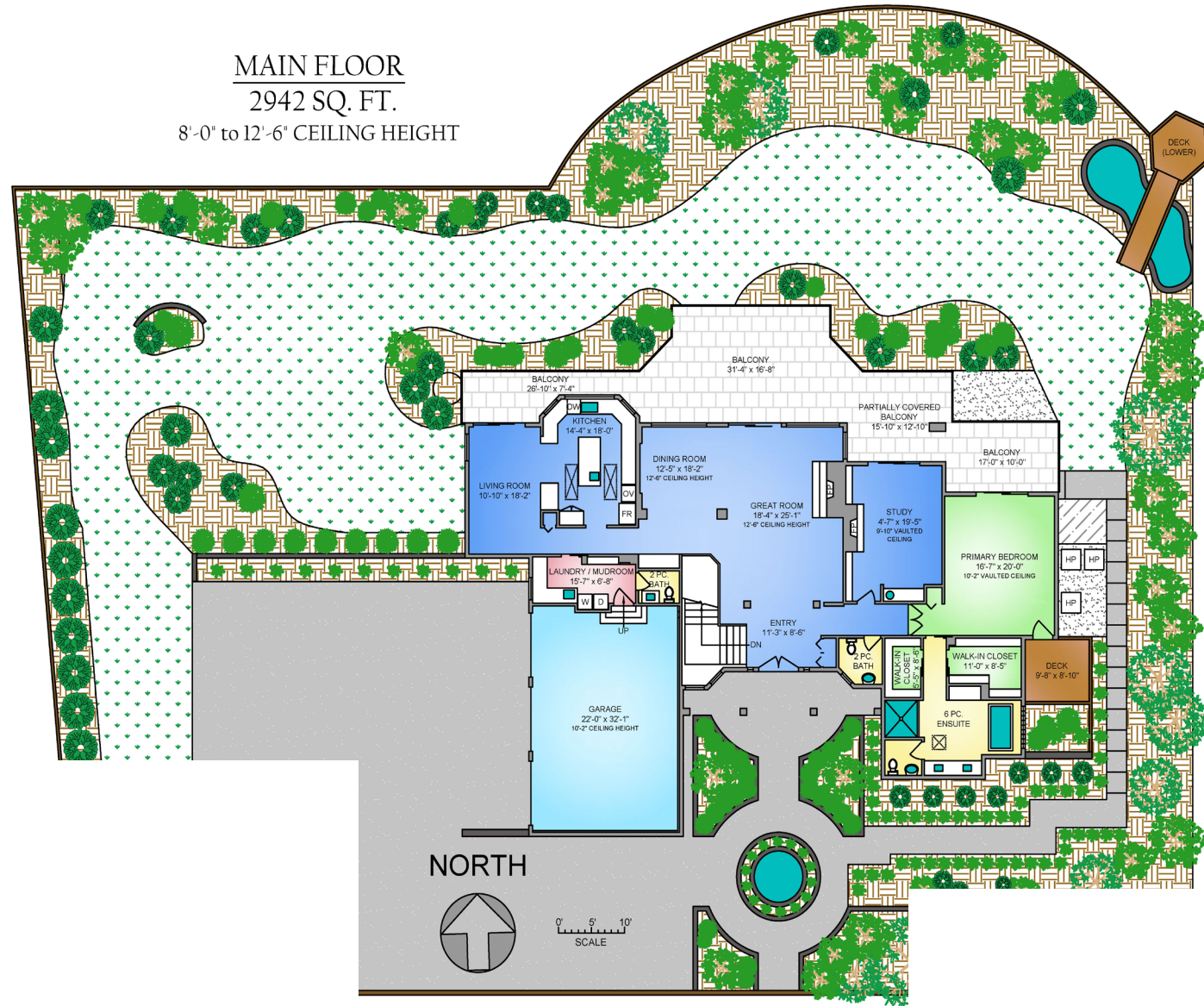
## Property Floorplan

Main Floor 2,942 sq. ft.  
Lower Floor 2,141 sq. ft.

**TOTAL AREA 5,083 sq. ft.**

Garage 755 sq. ft.  
Deck / Patio 2,071 sq. ft.

MAIN FLOOR  
2942 SQ. FT.  
8'-0" to 12'-6" CEILING HEIGHT



\* DIMENSIONS ARE FOR REFERENCE PURPOSES ONLY AND ARE NOT TAKEN FROM ORIGINAL BLUEPRINTS





## Property Floorplan

Main Floor 2,942 sq. ft.  
Lower Floor 2,141 sq. ft.

**TOTAL AREA 5,083 sq. ft.**

Garage 755 sq. ft.  
Deck / Patio 2,071 sq. ft.

### LOWER FLOOR 2141 SQ. FT. 8'-0" CEILING HEIGHT



\* DIMENSIONS ARE FOR REFERENCE PURPOSES ONLY AND ARE NOT TAKEN FROM ORIGINAL BLUEPRINTS





## Property Photos

EXTERIOR







# Property Photos

## KITCHEN







## Property Photos

INTERIOR







## Property Photos

PRIMARY BEDROOM  
& ENSUITE







## Property Photos

LOWER LEVEL







## Property Photos

EXTERIOR

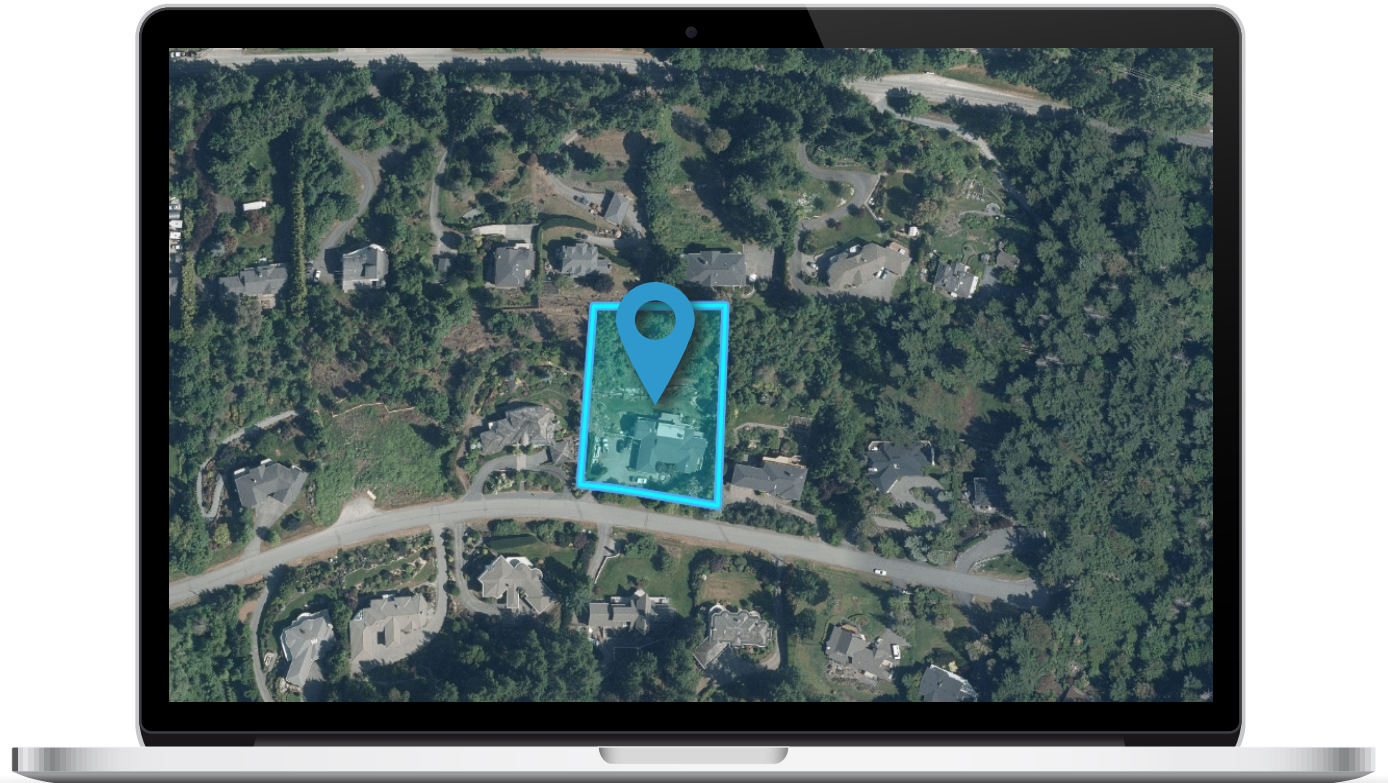






## Location

(GIS) MAPPING











CEL • 250 818 9338 | TEL • 778 426 2262

[Chace@ChaceWhitson.com](mailto:Chace@ChaceWhitson.com) | [ChaceWhitson.com](http://ChaceWhitson.com)

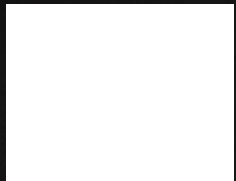
2411 • Bevan Avenue Sidney, BC • V8L 4M9







**CHACE  
WHITSON**  
PERSONAL REAL ESTATE CORPORATION



Chace Whitson | 250.818.9338 | [Chace@ChaceWhitson.com](mailto:Chace@ChaceWhitson.com) | [ChaceWhitson.com](http://ChaceWhitson.com)