



10720 BAYFIELD RD

North Saanich





FOR SALE



10720 Bayfield Rd

North Saanich

[SUMMARY OVERVIEW](#)



LISTING PRICE:

\$999,000



LAND SIZE:

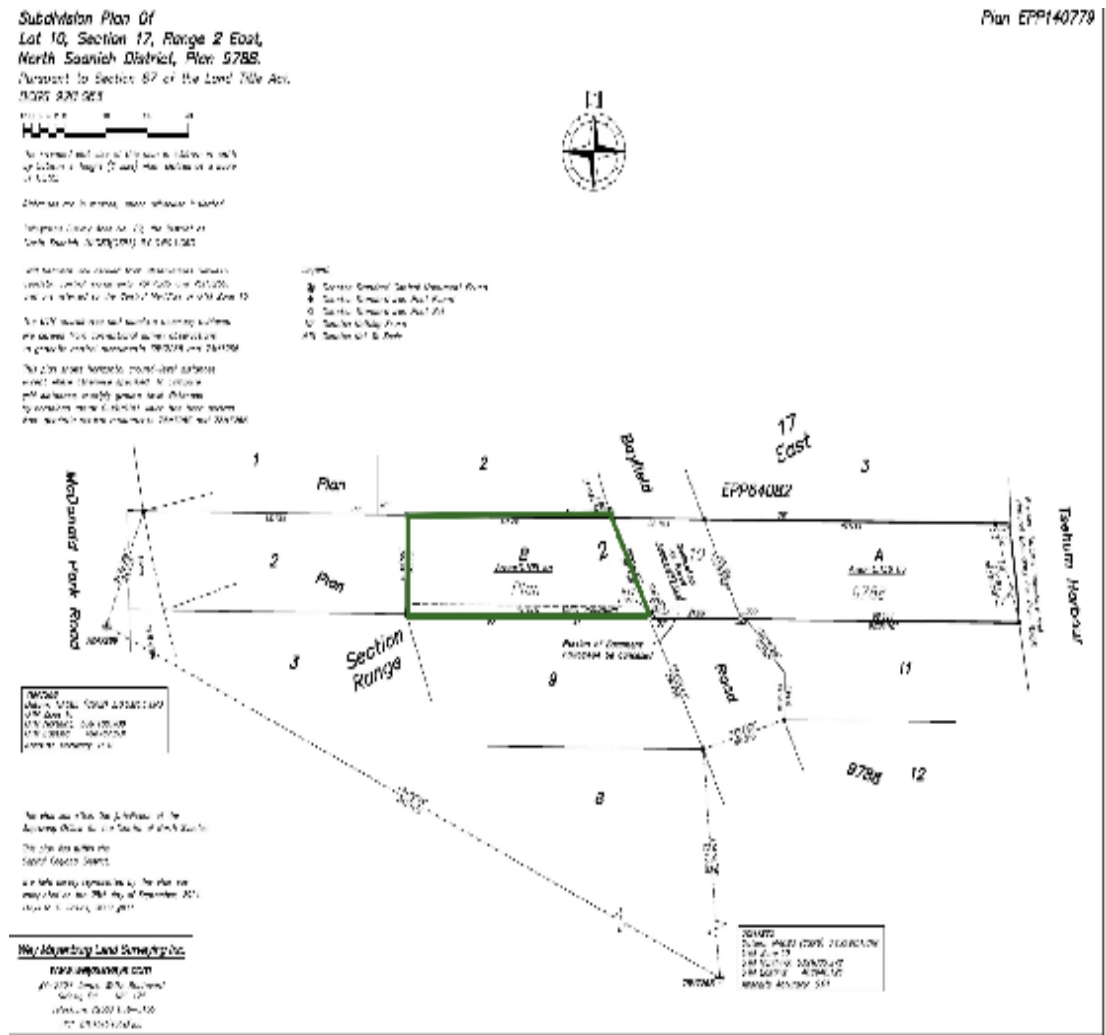
11,302 sq.ft.



A rare opportunity on the Saanich Peninsula—this highly sought-after, flat, and easy-to-build lot is situated within an exclusive enclave of custom-built homes. Serviced with municipal water and underground hydro, the property only requires service connections at the lot line, streamlining your build process. Enjoy partial ocean views and excellent sun exposure, perfect for capturing warm evening light in your future backyard. Located on a quiet, picturesque street, this lot offers easy access to nearby beaches—ideal for kayaking and paddleboarding—as well as scenic trails at Horth Hill Regional Park, just minutes away. You'll also appreciate the proximity to BC Ferries, Victoria International Airport, and the charming communities of Sidney and Deep Cove. This is a prime opportunity to build your dream home in one of the Peninsula's most desirable and well-connected neighborhoods..



TOTAL AREA 11,302 sq. ft.





Property Photos







CEL • 250 818 9338 | TEL • 778 426 2262

Chace@ChaceWhitson.com | ChaceWhitson.com

2411 • Bevan Avenue Sidney, BC • V8L 4M9





Chace Whitson | 250.818.9338 | Chace@ChaceWhitson.com | ChaceWhitson.com