



202-2270 HARBOUR

Sidney by the Sea





FOR SALE



202-2270 Harbour Rd

Sidney by the Sea

SUMMARY OVERVIEW



LISTING PRICE:

\$2,998,000 + GST



LIVING AREA:

3,613 sq. ft.



BEDROOMS:

4



BATHROOMS:

5



Experience Unrivaled Coastal Elegance at the Yacht Master, a rare oceanfront masterpiece located in the prestigious new Harbour Haven Development. This exquisite 4-bed, 5-bath residence spans 3,613 sq. ft of impeccably designed living space, offering breathtaking views of the marina and coastline. Step inside to discover an airy, open-concept layout enhanced by 10-foot ceilings, floor-to-ceiling windows, numerous skylights, elongated gas fireplace, and wide-plank hardwood flooring throughout. The chef-inspired kitchen is a culinary showpiece, featuring custom millwork, quartz countertops, and top-of-the-line Signature Series appliances. This home offers the ultimate in comfort and privacy with two lavish primary suites, each boasting spa-like ensuites. Three expansive balconies invite seamless indoor-outdoor living—perfect for entertaining or simply savoring the panoramic vistas and ideal sun exposure. Additional features include an oversized double garage, a private elevator, and a fully self-contained 1-bed, 1-bath lock-off suite. Located just steps from the marina, beaches, cafés, restaurants and Sidney by the Sea, this is coastal luxury living at its finest. .



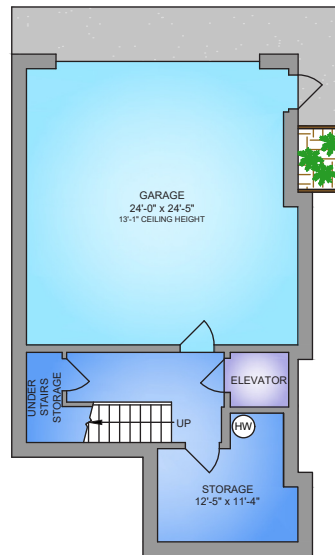
Property Floorplan

Main Floor 2,346 sq. ft.
Upper Floor 911 sq. ft.
Lower Floor 356 sq. ft.

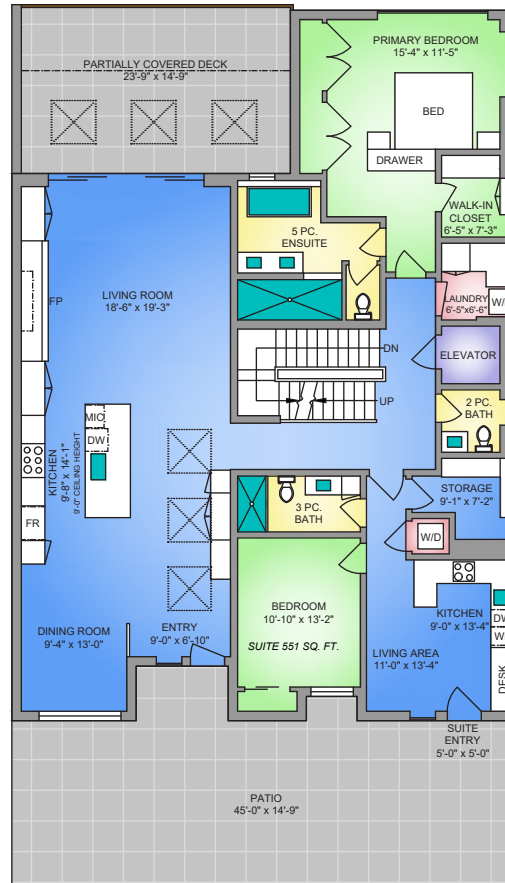
TOTAL 3,613 sq. ft.

Garage Carport 657 sq. ft.
Deck / Patio 1,623 sq. ft.

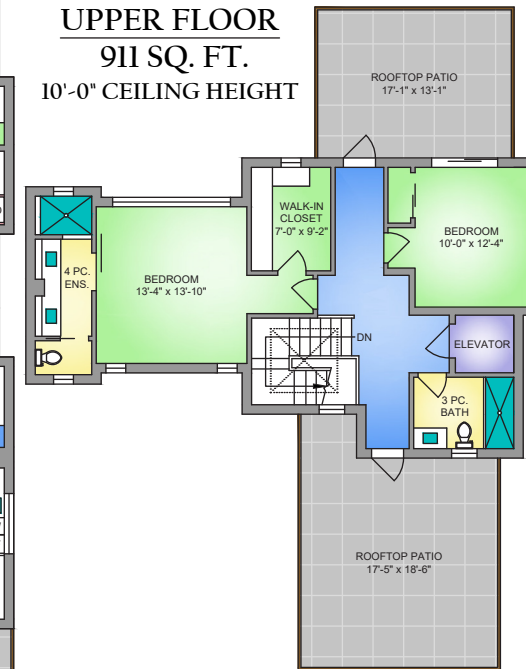
LOWER FLOOR 356 SQ. FT. 13'-4" CEILING HEIGHT



MAIN FLOOR 2346 SQ. FT. 10'-0" CEILING HEIGHT



UPPER FLOOR 911 SQ. FT. 10'-0" CEILING HEIGHT



* DIMENSIONS ARE FOR REFERENCE PURPOSES ONLY AND ARE NOT TAKEN FROM ORIGINAL BLUEPRINTS



Property Photos

EXTERIOR





Property Photos

KITCHEN





Property Photos

INTERIOR





Property Photos

INTERIOR





Property Photos

SUITE





Property Photos

EXTERIOR

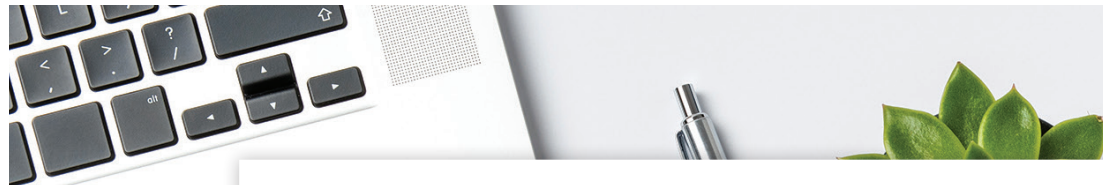




Location

(GIS) MAPPING





 **CHACE
WHITSON**
REAL ESTATE GROUP


**Macdonald
Realty**



CEL · 250 818 9338 | TEL · 778 426 2262

Chace@ChaceWhitson.com | ChaceWhitson.com

2411 · Bevan Avenue Sidney, BC · V8L 4M9





**CHACE
WHITSON**
PERSONAL REAL ESTATE CORPORATION



Chace Whitson | 250.818.9338 | Chace@ChaceWhitson.com | ChaceWhitson.com