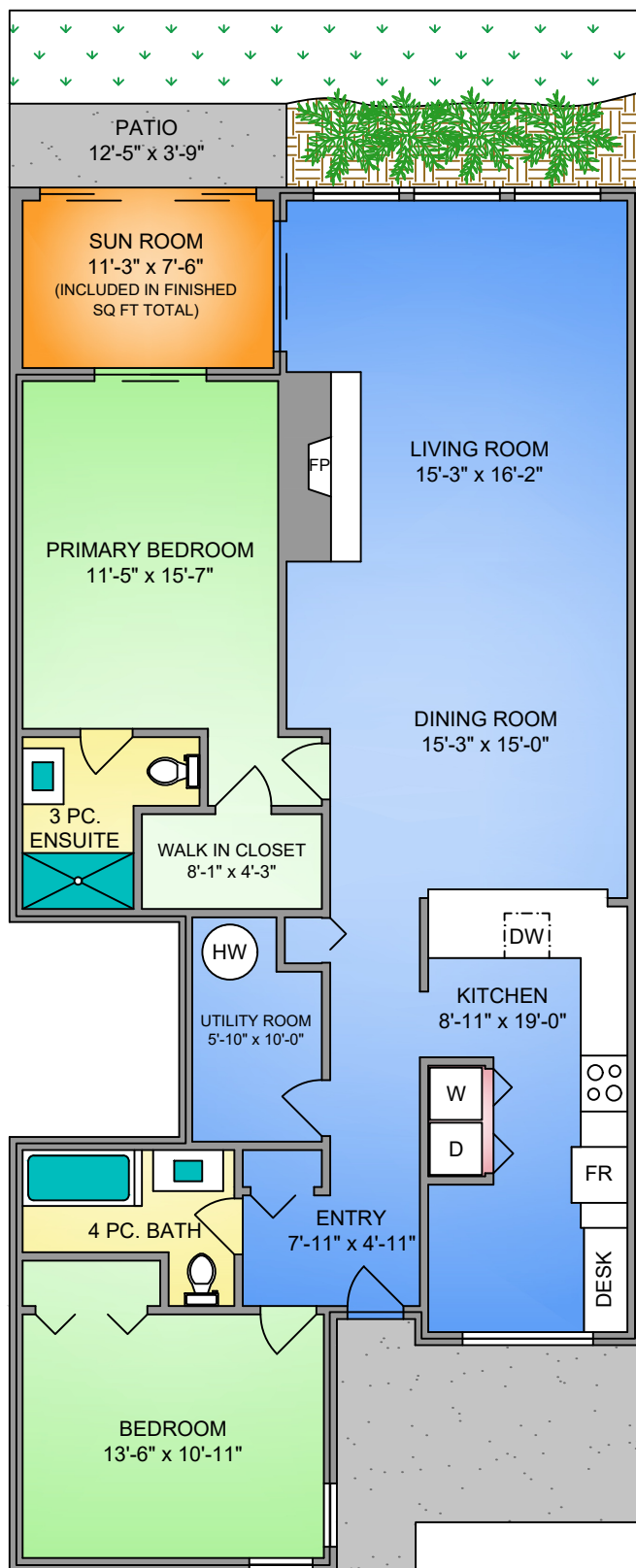
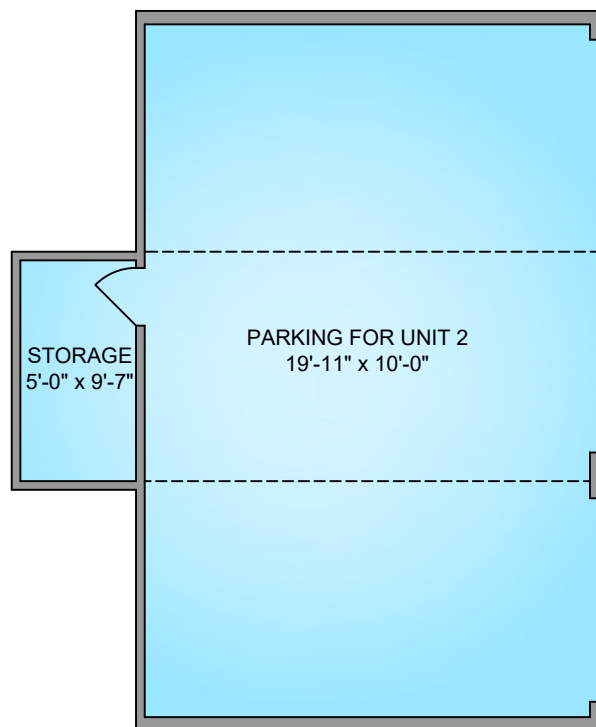


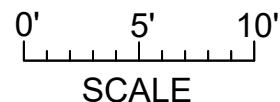
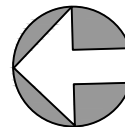
**UNIT 2 - 9901 THIRD STREET**  
**1477 SQ. FT.**  
**8'-0" CEILING HEIGHT**



**SHARED GARAGE**  
**8' - 4" CEILING HEIGHT**



**NORTH**



UNIT 2 - 9901 THIRD STREET		
APRIL 23, 2025		
PREPARED FOR THE EXCLUSIVE USE OF CHACE WHITSON		
PLANS MAY NOT BE 100% ACCURATE, IF CRITICAL BUYER TO VERIFY.		
FLOOR	AREA (SQ. FT.)	
	FINISHED	PATIO
FIRST	1477	46