



604-5350 SAYWARD HILLS

Cordova Bay





FOR SALE



604-5350 Sayward Hills

Cordova Bay

SUMMARY OVERVIEW



LISTING PRICE:

\$1,185,000



LIVING AREA:

1,830 sq. ft.



BEDROOMS:

2



BATHROOMS:

2



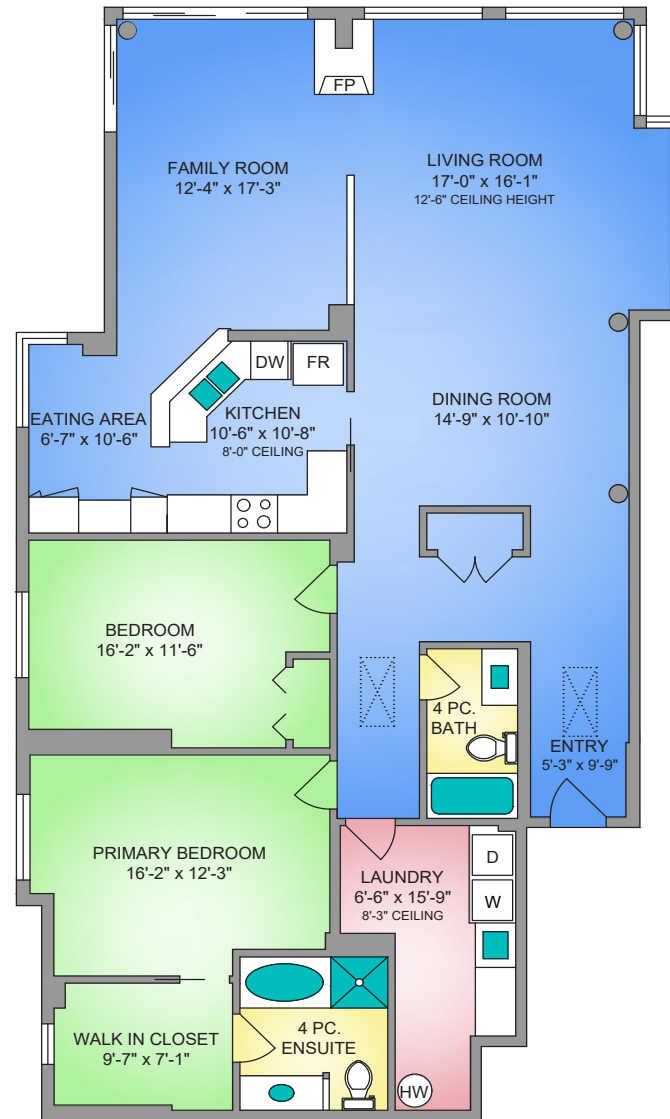
Unparalleled luxury living in the heart of Cordova Bay. This top-floor corner penthouse is designed to showcase breathtaking, unobstructed views of the ocean, Mt. Baker, and the lush greens of Cordova Bay Golf Course. Soaring ceilings and expansive floor-to-ceiling windows create a bright, airy ambiance, seamlessly blending indoor and outdoor living. The 2-bedroom, 2-bath layout offers exceptional comfort and style. The entertainment-sized living and dining area is anchored by a sleek, new high-efficiency gas fireplace, while electric blinds provide effortless light control. The kitchen is well-appointed with all-new stainless steel appliances, an inviting breakfast area, and direct access to the fully updated laundry room with custom cabinetry. The primary suite is a true retreat, featuring a walk-in closet and a spa-inspired 4-piece ensuite, while the second bath has been elegantly renovated. Luxury extends beyond the interiors with new plush carpeting throughout, ample storage, and secure underground parking wired for EV charging. Located in a meticulously managed community, just steps from Cordova Bay Beach, and the Lochside Trail, with seamless access to downtown Victoria, the airport, and ferries. A rare opportunity to own a premier penthouse residence in one of Victoria's most coveted locations.

UNIT 604 - 5350 SAYWARD HILL CRESCENT
1830 SQ. FT.
9'-0" to 12'-6" CEILING HEIGHT



Property Floorplan

LIVING AREA 1,838 sq. ft.



* DIMENSIONS ARE FOR REFERENCE PURPOSES ONLY AND ARE NOT TAKEN FROM ORIGINAL BLUEPRINTS



Property Photos





Property Photos





Property Photos





Property Photos





Location

(GIS) MAPPING







CEL • 250 818 9338 | TEL • 778 426 2262

Chace@ChaceWhitson.com | ChaceWhitson.com

2411 • Bevan Avenue Sidney, BC • V8L 4M9





**CHACE
WHITSON**
PERSONAL REAL ESTATE CORPORATION



Chace Whitson | 250.818.9338 | Chace@ChaceWhitson.com | ChaceWhitson.com