



604-5350 SAYWARD HILL CRES

Cordova Bay





FOR SALE



604-5350 Sayward Hill Cres

Cordova Bay

SUMMARY OVERVIEW



LISTING PRICE:

\$1,145,000



LIVING AREA:

1,830 sq. ft.



BEDROOMS:

2



BATHROOMS:

2



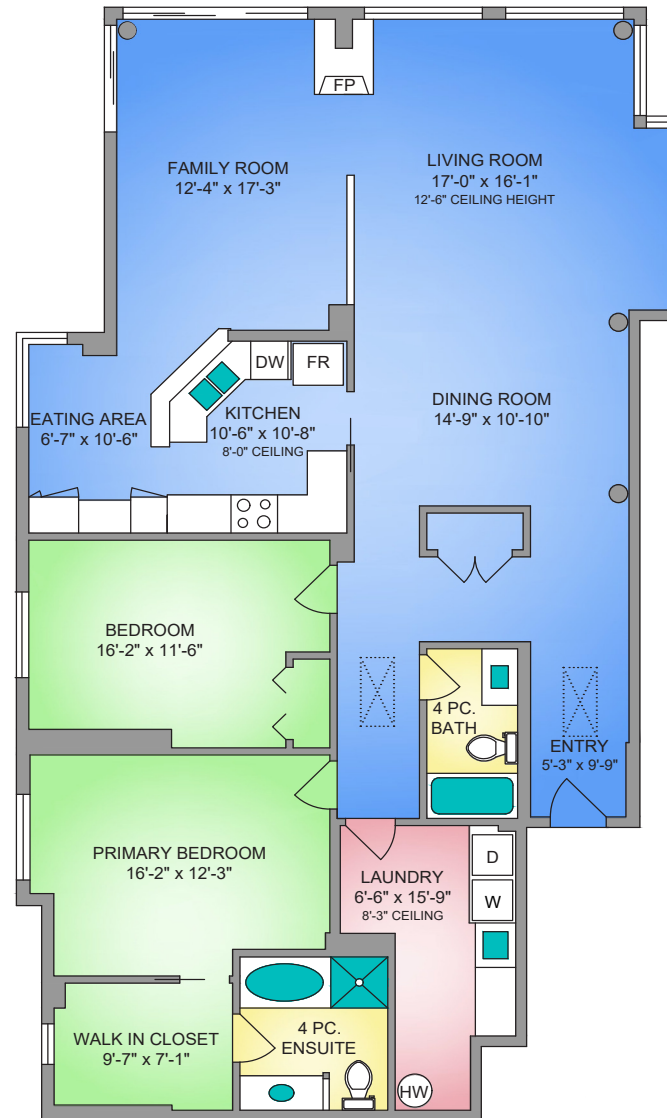
Experience luxury living in this top-floor corner penthouse, offering breathtaking, unobstructed views of Haro Strait, Mt. Baker, and the lush Cordova Bay Golf Course. With soaring 12.5' ceilings and floor-to-ceiling windows, the space feels bright and airy. This spacious 2-bed, 2-bath home features an open-concept living and dining area w/ a sleek, new high-efficiency gas fireplace and electric blinds for effortless light control. The gourmet kitchen boasts brand-new SS appliances and a cozy breakfast nook, while the updated laundry room w/ custom cabinetry offers added convenience. The primary suite is a true retreat w/ a walk-in closet and spa-inspired 4-piece ensuite. The second bath has been beautifully renovated. Additional highlights include new plush carpeting, fresh paint, ample storage, and secure underground parking w/ EV charging. Located in a well-managed community, steps from beaches, trails, and shops, w/ easy access to Victoria, airport, and ferries. A rare opportunity!

UNIT 604 - 5350 SAYWARD HILL CRESCENT
1830 SQ. FT.
9'-0" to 12'-6" CEILING HEIGHT



Property Floorplan

LIVING AREA 1,830 sq. ft.



* DIMENSIONS ARE FOR REFERENCE PURPOSES ONLY AND ARE NOT TAKEN FROM ORIGINAL BLUEPRINTS



Property Photos





Property Photos





Property Photos





Property Photos





Location

(GIS) MAPPING







CEL · 250 818 9338 | TEL · 778 426 2262

Chace@ChaceWhitson.com | ChaceWhitson.com

2411 · Bevan Avenue Sidney, BC · V8L 4M9





**CHACE
WHITSON**
PERSONAL REAL ESTATE CORPORATION



Chace Whitson | 250.818.9338 | Chace@ChaceWhitson.com | ChaceWhitson.com