

303-2348 BEACON AVE

Sidney





FOR SALE



303-2348 Beacon Ave

Sidney

SUMMARY OVERVIEW



LISTING PRICE: \$619,000



LIVING AREA: 837 sq. ft.



BEDROOMS: 2



BATHROOMS: 2



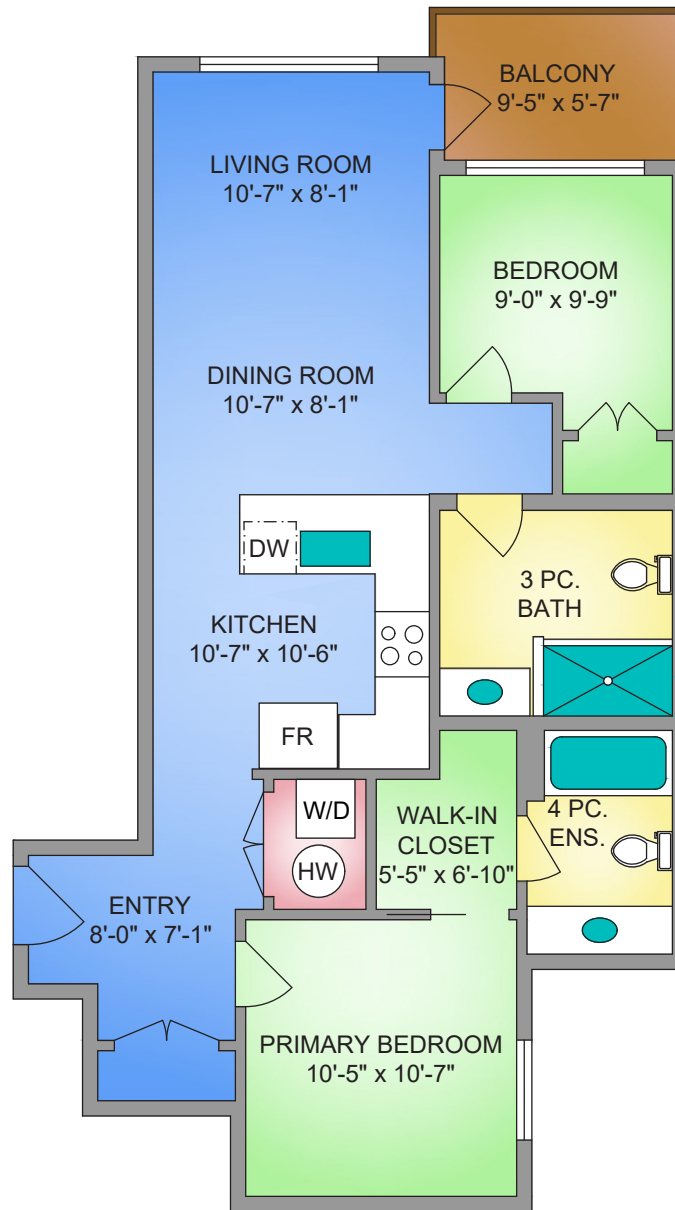
Welcome to The Aloutte – Luxury Living in Downtown Sidney. Set in one of the city's most sought-after condo developments, this 2-Bed, 2-Bath unit offers 837 sqft. of living space. With its 9-ft ceilings, grand windows, North-East-facing exposure, and an open floor plan, the home is bright, airy, and full of natural light. The kitchen features modern cabinetry, quartz countertops, sophisticated white appliances, and opens to the dining and living areas for a connected feel among the spaces. Elevated details, from wide-plank flooring to honeycomb tile work, can be seen throughout the home. Enjoy a primary suite, complete with a 4-piece ensuite and walk-in closet, as well as a second bedroom and bathroom, in-suite laundry, and a spacious outdoor patio space. Appreciate the convenience of condo living with covered parking, storage, and the city's best restaurants, shops, and markets just steps from your door.



Property Floorplan

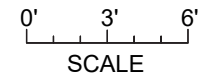
LIVING AREA 1,618 sq. ft.

Garage 292 sq. ft.



#303 - 2348 BEACON AVE.
837 SQ. FT.
9'-0" CEILING HEIGHT

NORTH



* DIMENSIONS ARE FOR REFERENCE PURPOSES ONLY AND ARE NOT TAKEN FROM ORIGINAL BLUEPRINTS



Interior Photos

KITCHEN





Interior Photos

LIVING ROOM





Interior Photos





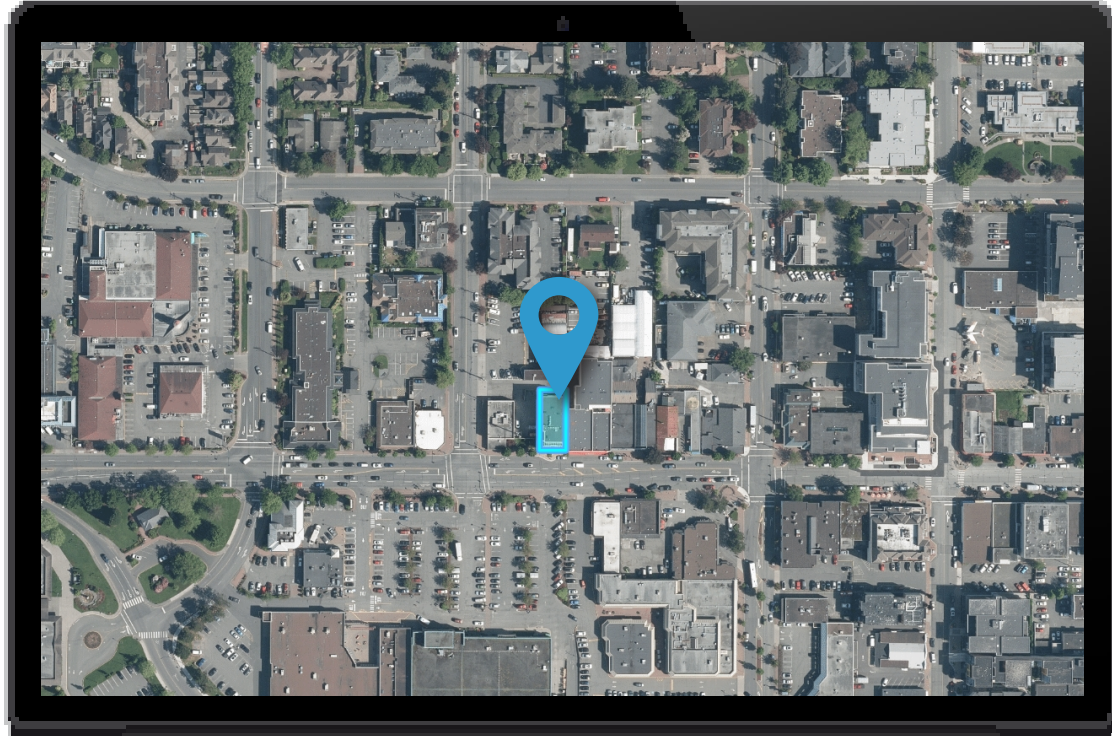
Exterior Photos





Location

(GIS) MAPPING





**CHACE
WHITSON**
PERSONAL REAL ESTATE CORPORATION



**Macdonald
Realty**



CEL · 250 818 9338 | TEL · 778 426 2262

Chace@ChaceWhitson.com | ChaceWhitson.com

2411 · Bevan Avenue Sidney, BC · V8L 4M9





**CHACE
WHITSON**
PERSONAL REAL ESTATE CORPORATION



Chace Whitson | 250.818.9338 | Chace@ChaceWhitson.com | ChaceWhitson.com