

# 1936 LLEWELLYN PLACE

Dean Park





FOR SALE



# 1936 Llewellyn place

Dean Park

SUMMARY OVERVIEW



LISTING PRICE: \$1,750,000



LIVING AREA: 2,792 sq. ft.



BEDROOMS: 3



BATHROOMS: 3



Situated on a sun-drenched half-acre in Dean Park, this stunning 2,792 sq ft house offers an incredible opportunity to own your dream home. Featuring an exceptional floor plan w/ 3 beds/3 baths & primary bedroom on the main floor, this exquisite home is sure to impress. Highlights include large windows & vaulted ceilings designed to maximize the natural light, an open kitchen w/ quartz counters & designer appliances & a serene primary w/ walk-in closet & 4-pc ensuite. The lower level offers a generous living area equipped w/ spacious flex/media room, storage room/pantry & self-contained legal 1-bed suite. Outside you will find an outstanding living space with a large sundeck, and a covered South facing patio, overlooking the elegant landscaping. Extensively renovated in 2018 by Villamar Construction & located in a desirable neighbourhood w/ convenient access to shops, schools, & transit, this is an incredible home offering outstanding quality & value.

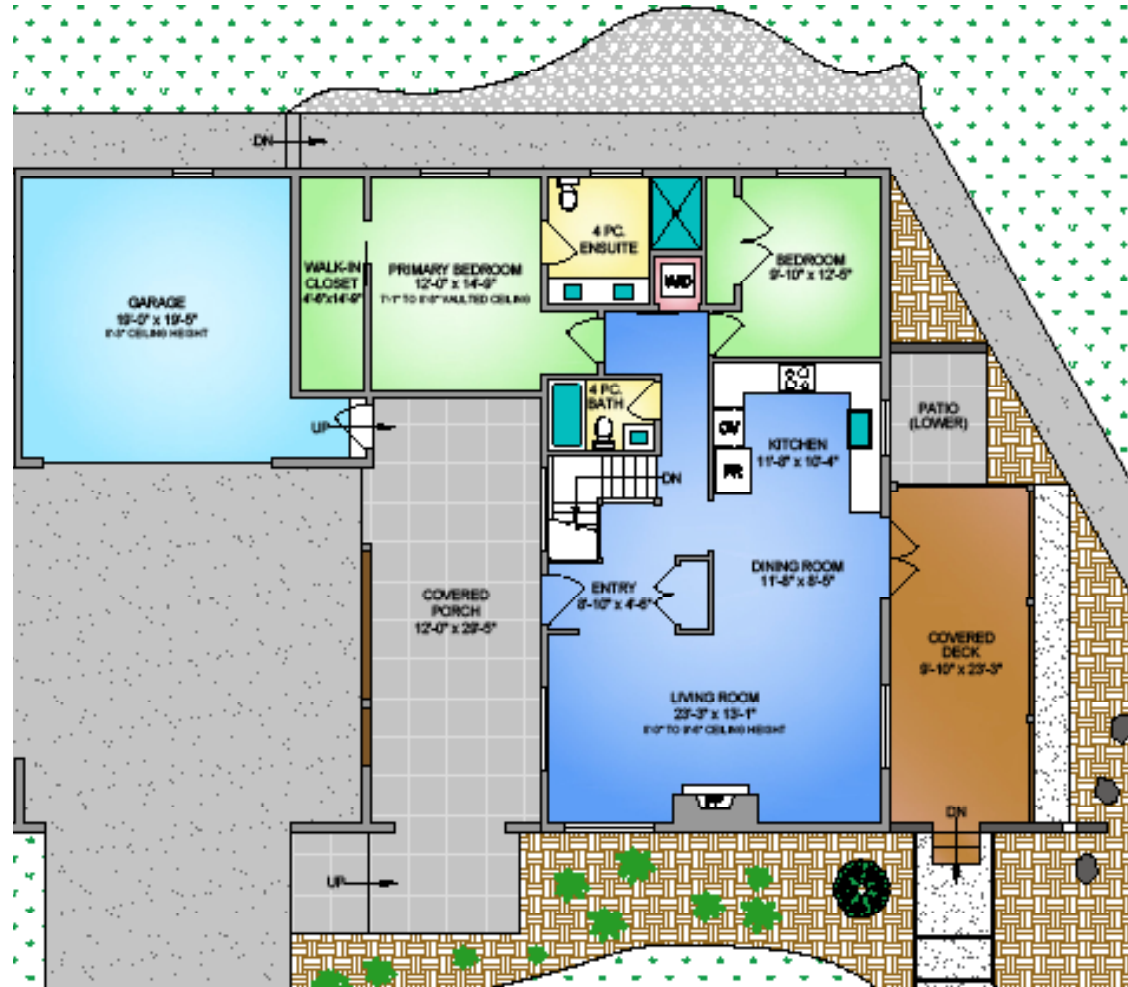


# Property Floorplan

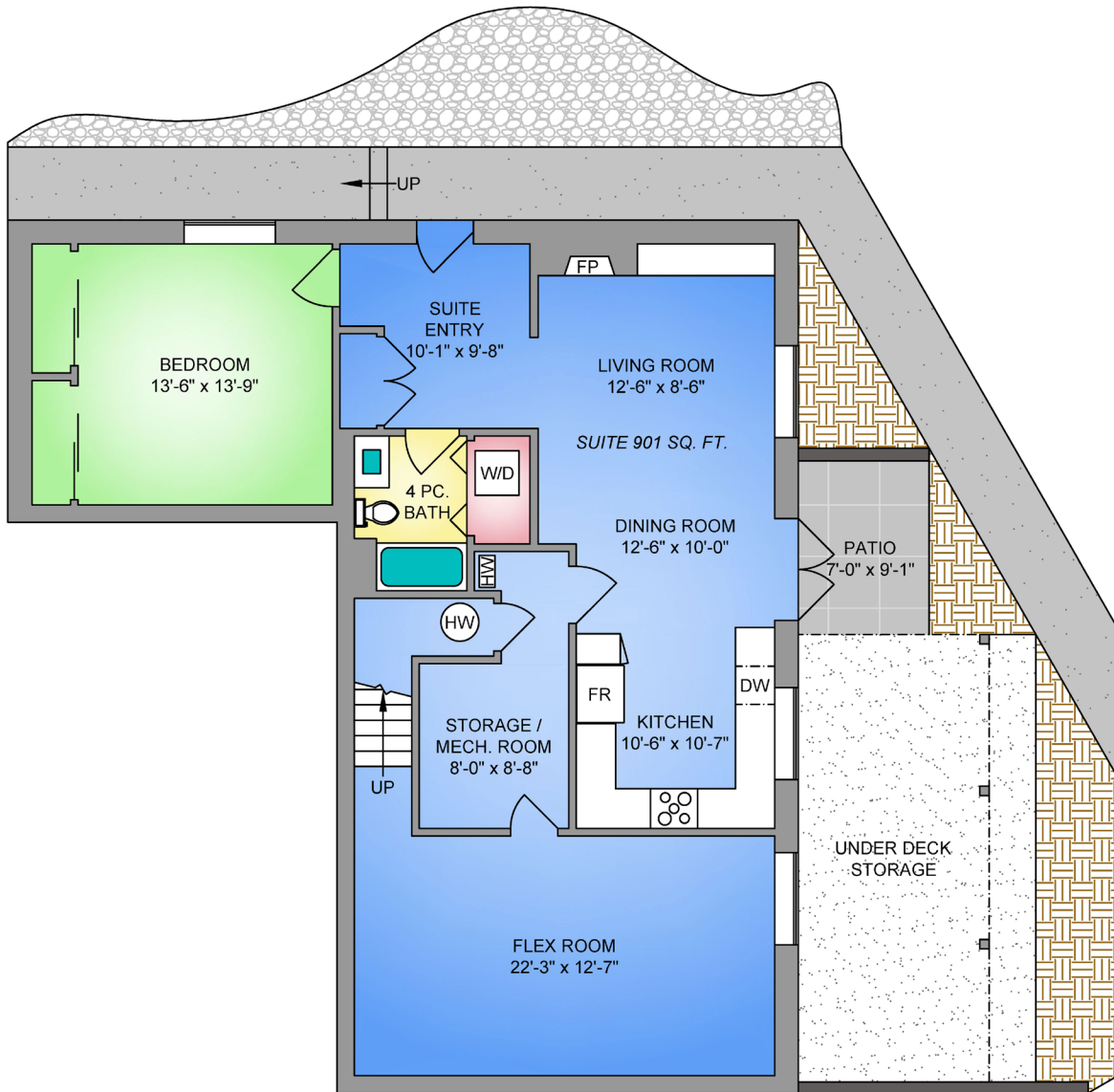
Main Floor 1,396 sq. ft.  
Lower Level 1,396 sq. ft.

**LIVING AREA 2,792 sq. ft.**

Garage 428 sq. ft.  
Covered Deck 588 sq. ft.  
Patio 63 sq. ft.



\* DIMENSIONS ARE FOR REFERENCE PURPOSES ONLY AND ARE NOT TAKEN FROM ORIGINAL BLUEPRINTS



## Property Floorplan

Main Floor 1,396 sq. ft.  
 Lower Level 1,396 sq. ft.

**LIVING AREA 2,792 sq. ft.**

Garage 428 sq. ft.  
 Covered Deck 588 sq. ft.  
 Patio 63 sq. ft.

\* DIMENSIONS ARE FOR REFERENCE PURPOSES ONLY AND ARE NOT TAKEN FROM ORIGINAL BLUEPRINTS



# Property Photos

EXTERIOR





# Property Photos

---

## KITCHEN





# Property Photos

INTERIOR







# Property Photos

INTERIOR LOWER LEVEL





# Location

(GIS) MAPPING





 **CHACE  
WHITSON**  
PERSONAL REAL ESTATE CORPORATION

  
**Macdonald  
Realty**



**CHACE  
WHITSON**  
PERSONAL REAL ESTATE CORPORATION

CEL · 250 818 9338 | TEL · 778 426 2262

[Chace@ChaceWhitson.com](mailto:Chace@ChaceWhitson.com) | [ChaceWhitson.com](http://ChaceWhitson.com)

2411 · Bevan Avenue Sidney, BC · V8L 4M9





**CHACE  
WHITSON**  
PERSONAL REAL ESTATE CORPORATION



Chace Whitson | 250.818.9338 | [Chace@ChaceWhitson.com](mailto:Chace@ChaceWhitson.com) | [ChaceWhitson.com](http://ChaceWhitson.com)