

1936 LLEWELLYN PLACE

Dean Park





FOR SALE



1936 Llewellyn place

Dean Park

SUMMARY OVERVIEW



LISTING PRICE:

\$1,799,000



LIVING AREA:

2,792 sq. ft.



BEDROOMS:

3



BATHROOMS:

3



Situated on a sun-drenched half-acre in Dean Park, this stunning 2,792 sq ft house offers an incredible opportunity to own your dream home. Featuring an exceptional floor plan w/ 3 beds/3 baths & primary bedroom on the main floor, this exquisite home is sure to impress. Highlights include large windows & vaulted ceilings designed to maximize the natural light, an open kitchen w/ quartz counters & designer appliances & a serene primary w/ walk-in closet & 4-pc ensuite. The lower level offers a generous living area equipped w/ spacious flex/media room, storage room/pantry & self-contained legal 1-bed suite. Outside you will find an outstanding living space with a large sundeck, and a covered South facing patio, overlooking the elegant landscaping. Extensively renovated in 2018 by Villamar Construction & located in a desirable neighbourhood w/ convenient access to shops, schools, & transit, this is an incredible home offering outstanding quality & value.

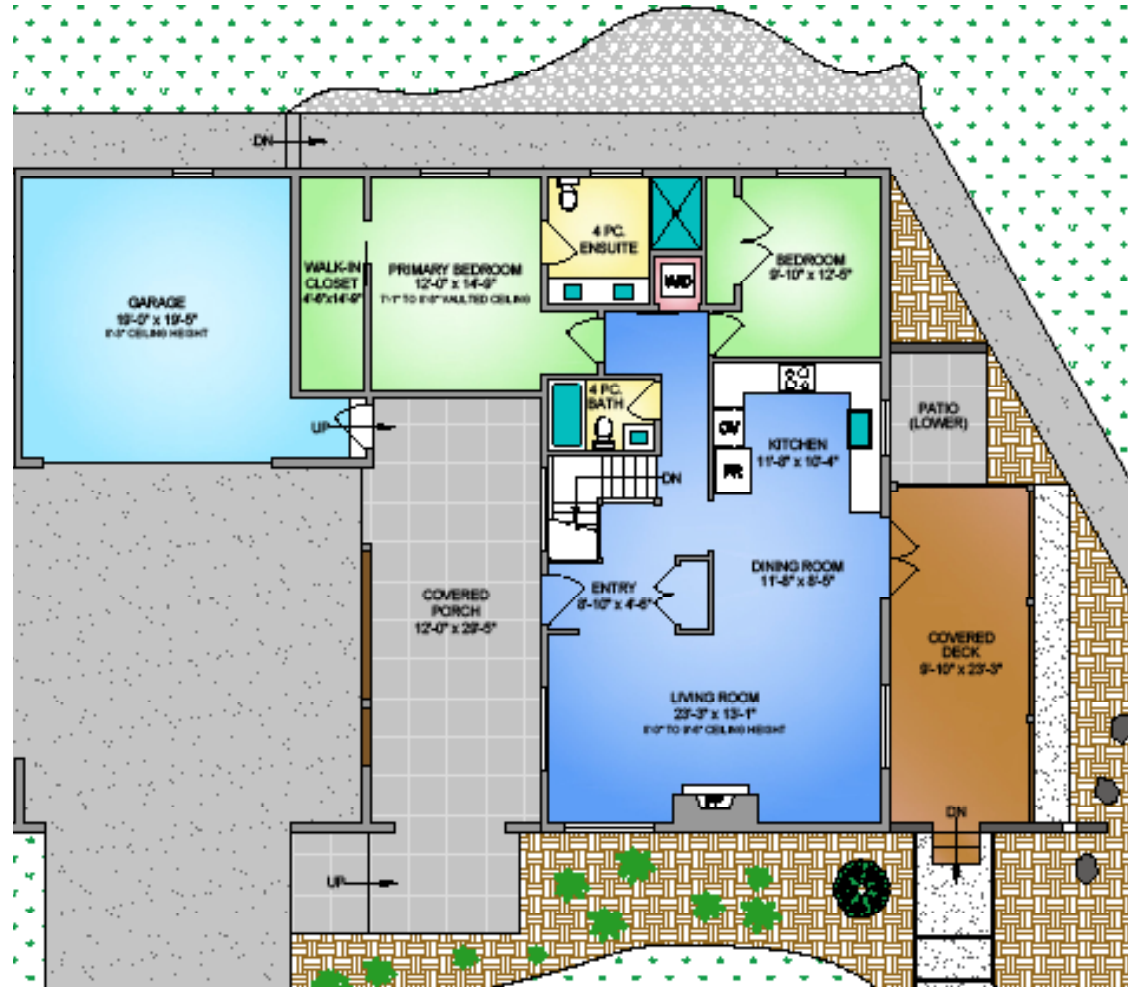


Property Floorplan

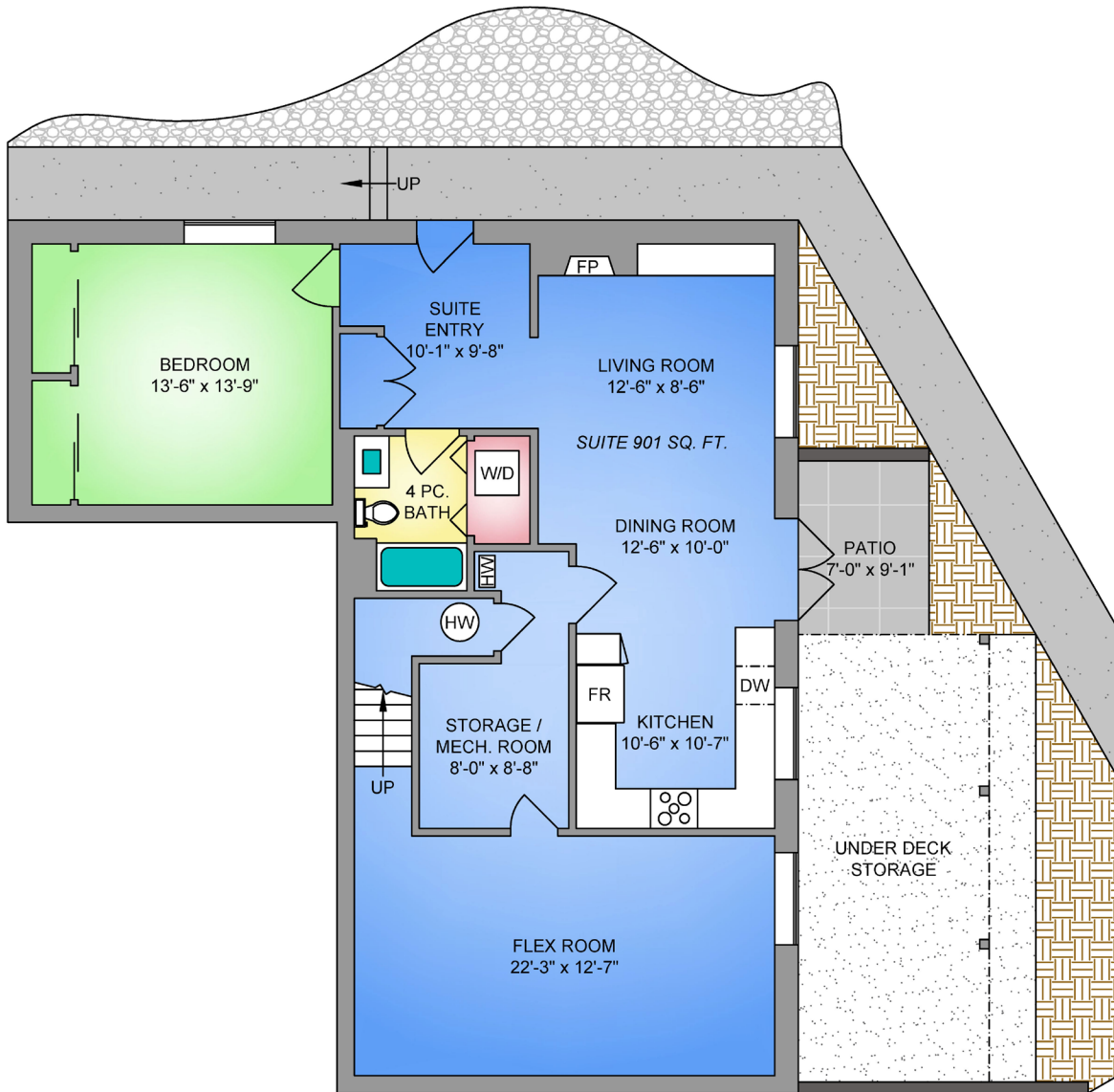
Main Floor 1,396 sq. ft.
Lower Level 1,396 sq. ft.

LIVING AREA 2,792 sq. ft.

Garage 428 sq. ft.
Covered Deck 588 sq. ft.
Patio 63 sq. ft.



* DIMENSIONS ARE FOR REFERENCE PURPOSES ONLY AND ARE NOT TAKEN FROM ORIGINAL BLUEPRINTS



Property Floorplan

Main Floor 1,396 sq. ft.
 Lower Level 1,396 sq. ft.

LIVING AREA 2,792 sq. ft.

Garage 428 sq. ft.
 Covered Deck 588 sq. ft.
 Patio 63 sq. ft.

* DIMENSIONS ARE FOR REFERENCE PURPOSES ONLY AND ARE NOT TAKEN FROM ORIGINAL BLUEPRINTS



Property Photos

EXTERIOR





Property Photos

KITCHEN





Property Photos

INTERIOR





Property Photos

INTERIOR LOWER LEVEL





Location

(GIS) MAPPING





 **CHACE
WHITSON**
PERSONAL REAL ESTATE CORPORATION


**Macdonald
Realty**



**CHACE
WHITSON**
PERSONAL REAL ESTATE CORPORATION

CEL · 250 818 9338 | TEL · 778 426 2262

Chace@ChaceWhitson.com | ChaceWhitson.com

2411 · Bevan Avenue Sidney, BC · V8L 4M9





**CHACE
WHITSON**
PERSONAL REAL ESTATE CORPORATION



Chace Whitson | 250.818.9338 | Chace@ChaceWhitson.com | ChaceWhitson.com