

9662 SIXTH

Sidney





FOR SALE



9662 Sixth Street

Sidney

SUMMARY OVERVIEW



LISTING PRICE:

\$1,149,000



LIVING AREA:

1,600 sq. ft.



BEDROOMS:

3



BATHROOMS:

3

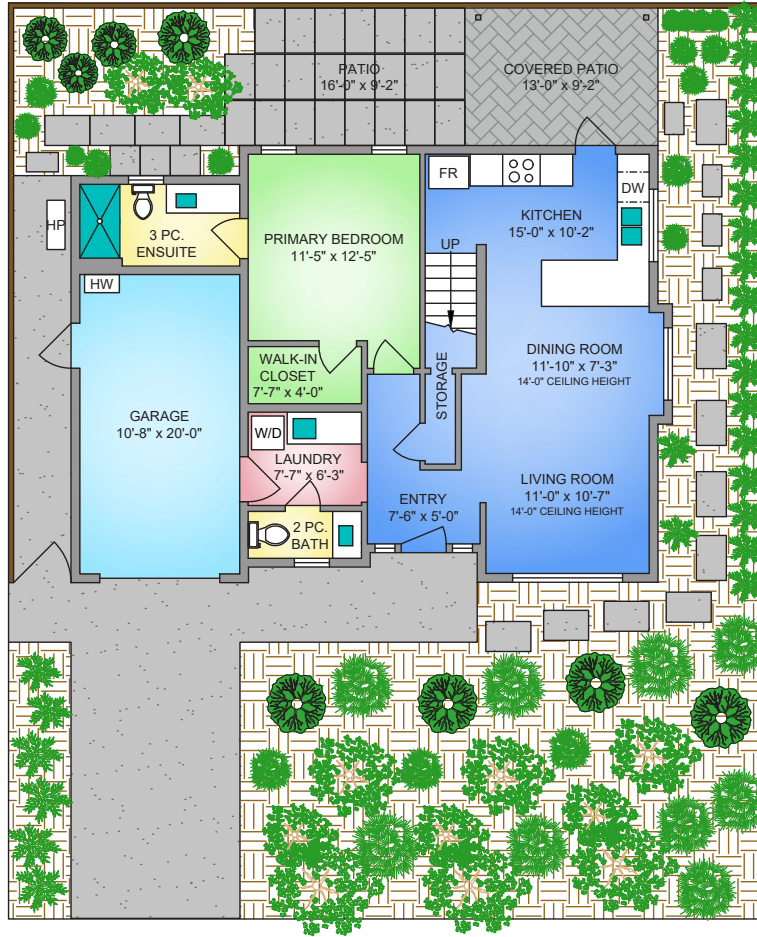


Stunning 3-bedroom, 3-bath home offering 1,600 sq. ft. of open-concept living with 18-foot vaulted ceilings and large windows. The main floor features a primary bedroom with a walk-in closet and spa-like ensuite, while the modern kitchen includes shaker cabinets, quartz countertops, and a gas range. Upstairs, you'll find two additional bedrooms, a full bathroom, and a spacious flex space. The home boasts engineered hardwood flooring, an electric heat pump with AC, and a tankless hot water system. Outside, enjoy a fully fenced and professionally landscaped yard with a gas BBQ hookup. Located in the charming town of Sidney, this home is just minutes from shopping, dining, and the waterfront, offering the perfect Saanich Peninsula lifestyle.

MAIN FLOOR

863 SQ. FT.

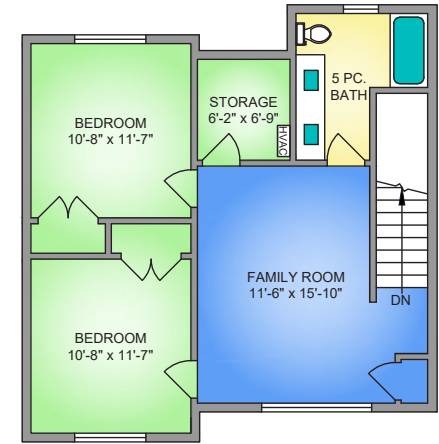
9'-0" CEILING HEIGHT



UPPER FLOOR

737 SQ. FT.

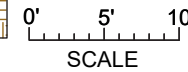
8'-0" CEILING HEIGHT



Property Floorplan

Main Floor	863 sq. ft.
Upper Floor	737 sq. ft.
TOTAL AREA	1,600 sq. ft.
Garage	241 sq. ft.
Patio	259 sq. ft.

NORTH



* DIMENSIONS ARE FOR REFERENCE PURPOSES ONLY AND ARE NOT TAKEN FROM ORIGINAL BLUEPRINTS



Property Photos

INTERIOR





Property Photos

KITCHEN





Property Photos

EXTERIOR





Appliance Specifications



Appliance Specifications

KITCHEN



Samsung®
18 cu. ft. Smart Counter Depth 3-Door
French Door Refrigerator
[RF18A5101SR](#)

Samsung®
Smart Dishwasher with StormWash+™ 44dBA
[DW80B6060](#)



Features and finishings are subject to change at the developer's discretion



Appliance Specifications

KITCHEN



Samsung®
Front Control Slide-in Gas Range with Convection
[NX60T8311SS](#)

Samsung®
1.1 cu. ft. Smart SLIM Over-the-Range Microwave with 400
CFM Ventilation, Wi-Fi & Voice Control
[ME11A7510DS](#)



Features and finishings are subject to change at the developer's discretion



**CHACE
WHITSON**
PERSONAL REAL ESTATE CORPORATION

CEL · 250 818 9338 | TEL · 778 426 2262

Chace@ChaceWhitson.com | ChaceWhitson.com

2411 · Bevan Avenue Sidney, BC · V8L 4M9





**CHACE
WHITSON**
PERSONAL REAL ESTATE CORPORATION



Chace Whitson | 250.818.9338 | Chace@ChaceWhitson.com | ChaceWhitson.com