

2283 WEILER

Sidney





FOR SALE



2283 Weiler Avenue

Sidney

SUMMARY OVERVIEW



LISTING PRICE: \$1,399,000



LIVING AREA: 1,416 sq. ft.



BEDROOMS: 3



BATHROOMS: 2



Brand new with NO GST. This 3 bed/2 bath RANCHER features a beautiful Cape Cod exterior and quality finishes throughout. This well designed one level home features an open concept living space with vaulted ceilings & skylights giving it a spacious airy feel. Highlights a gourmet kitchen w/ shaker cabinetry, soft-close doors, premium appliances w/ gas range, & oversized island, an incredible master w/ pristine 5-piece ensuite & walk-in closet, natural gas fireplace, & wide-plank hardwood floors throughout. Outside you will find a manicured, easy-care yard with beautiful patio space, 6 ft cedar fencing, underground irrigation, & gas BBQ/electrical hookups. Other features include a single-car garage, heated crawl space, and heat pump with A/C. Situated in a desirable neighbourhood within walking distance to beaches, restaurants, shops, and transit just a short drive from BC Ferries & the airport. This is an excellent opportunity to experience the comforts of a stunning new construction home.

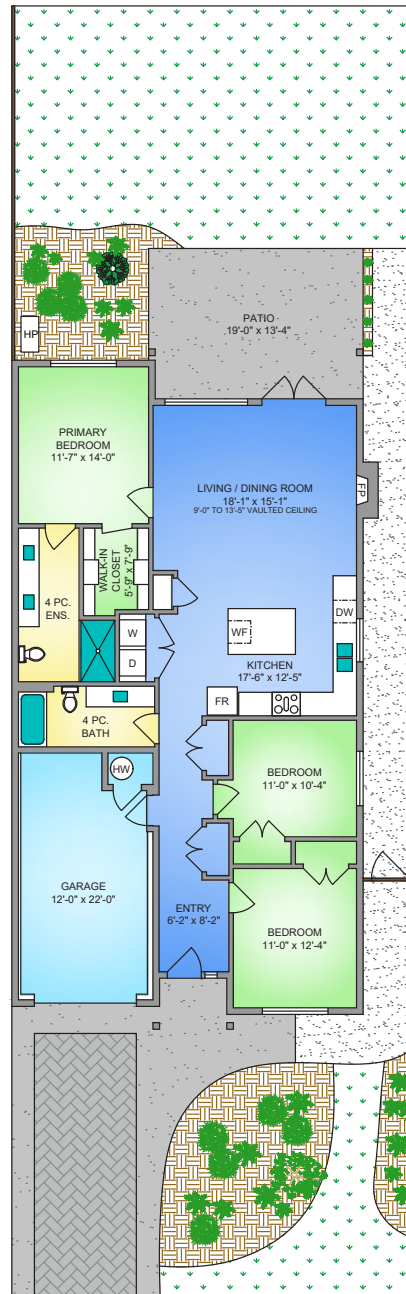


Property Floorplan

LIVING AREA 1,416 sq. ft.

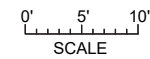
Garage 284 sq. ft.

Patio 251 sq. ft.



2283 WEILER AVENUE
1416 SQ. FT.
9'-0" CEILING HEIGHT

NORTH



* DIMENSIONS ARE FOR REFERENCE PURPOSES ONLY AND ARE NOT TAKEN FROM ORIGINAL BLUEPRINTS



Property Photos

KITCHEN





Property Photos

INTERIOR





Property Photos

INTERIOR





Property Photos

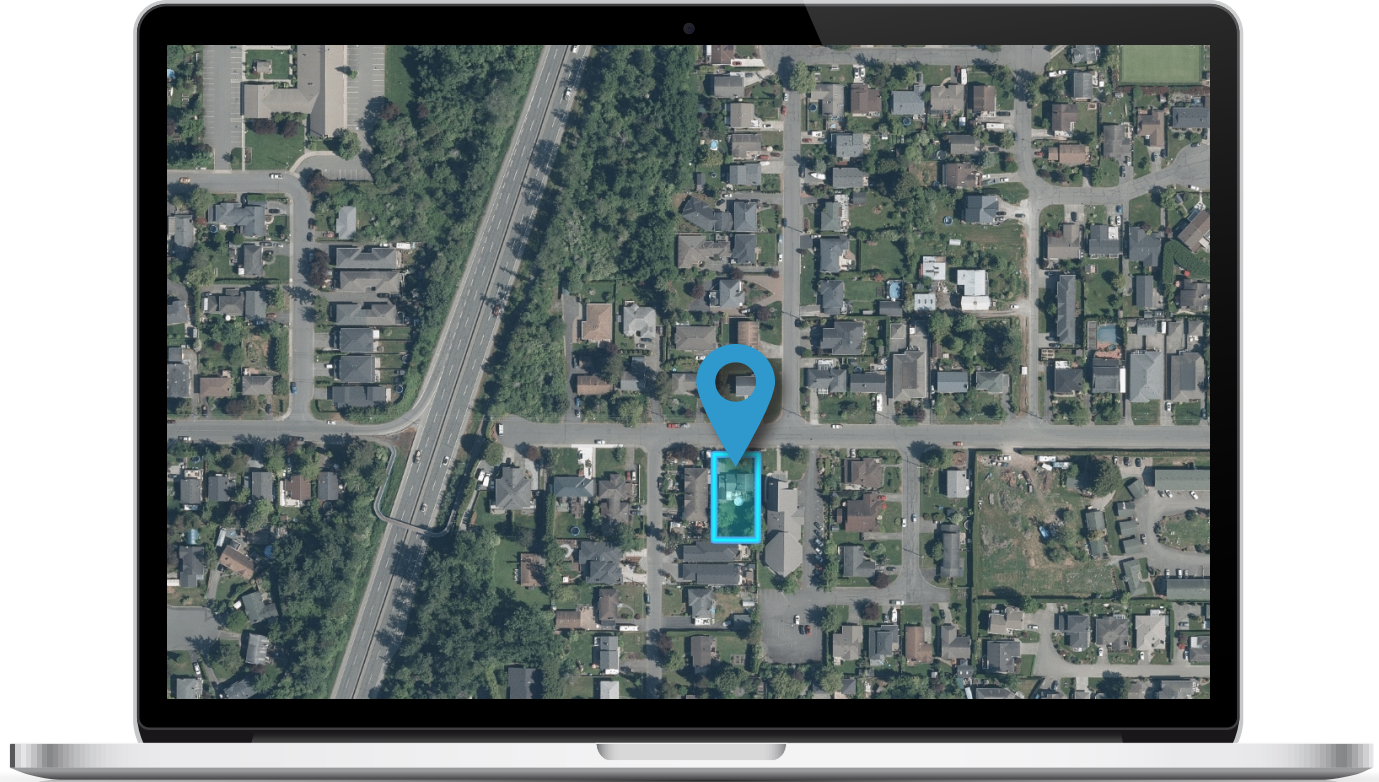
EXTERIOR





Location

(GIS) MAPPING







CEL · 250 818 9338 | TEL · 778 426 2262

Chace@ChaceWhitson.com | ChaceWhitson.com

2411 · Bevan Avenue Sidney, BC · V8L 4M9





**CHACE
WHITSON**
PERSONAL REAL ESTATE CORPORATION



Chace Whitson | 250.818.9338 | Chace@ChaceWhitson.com | ChaceWhitson.com