

1710 TEXADA

North Saanich





FOR SALE



1710 Texada Terr

North Saanich

SUMMARY OVERVIEW



LISTING PRICE:

\$1,850,000



LIVING AREA:

3,970 sq. ft.



BEDROOMS:

4 + Den



BATHROOMS:

4



Set among the prestigious homes of Texada Terrace sits a stunning 3970 sqft. home. Beautifully crafted and immaculately kept, this 4-Bed, 4-Bath + Den offers timeless design, inside and out. Soaring ceilings, wall-to-wall windows, and classic architectural detailing give the home a light, bright, and inviting feel with lux finishing throughout. Enjoy a magazine-worthy kitchen, featuring high-end appliances, including a Wolf range, as well as custom cabinetry, granite countertops, and an oversized island. A thoughtful layout offers a main-level primary suite with a luxurious ensuite and walk-in closet, while the lower level provides a walkout basement with 3 additional bedrooms, a spacious family room, and provisions for suite potential. Outside offers a relaxing oasis, with a large sundeck, covered patio, and beautifully landscaped, fully-fenced yard. Set in sought-after North Saanich, this incredible home is a must-see, close to shops, transportation, and neighbouring communities.

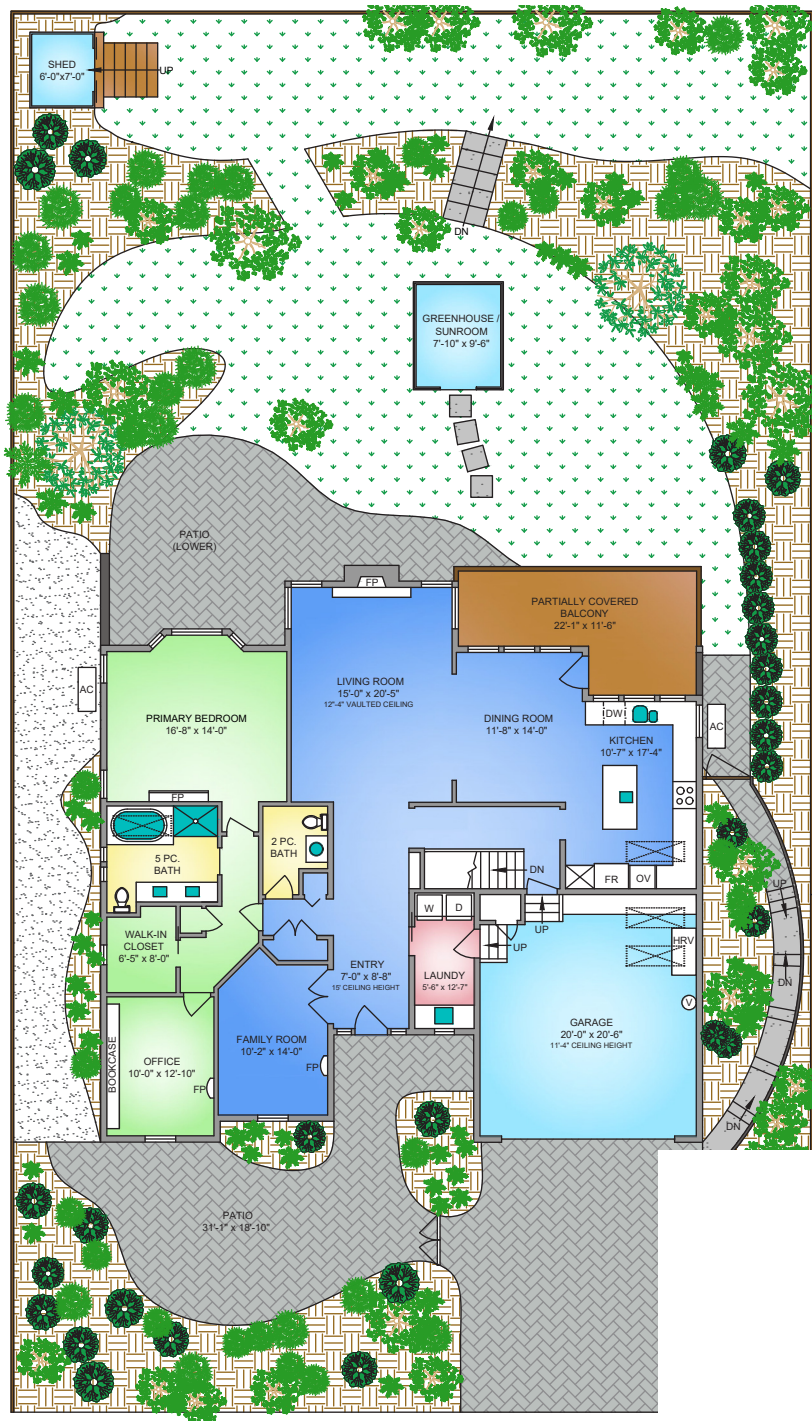


Property Floorplan

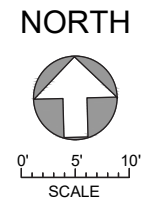
Main Floor 1,986 sq. ft.
Upper Floor 1,984 sq. ft.

TOTAL AREA 3,970 sq. ft.

Garage 488 sq. ft.
Deck/Patio 1,372 sq. ft.



MAIN FLOOR
1986 SQ. FT.
9'-0" CEILING HEIGHT



* DIMENSIONS ARE FOR REFERENCE PURPOSES ONLY AND ARE NOT TAKEN FROM ORIGINAL BLUEPRINTS

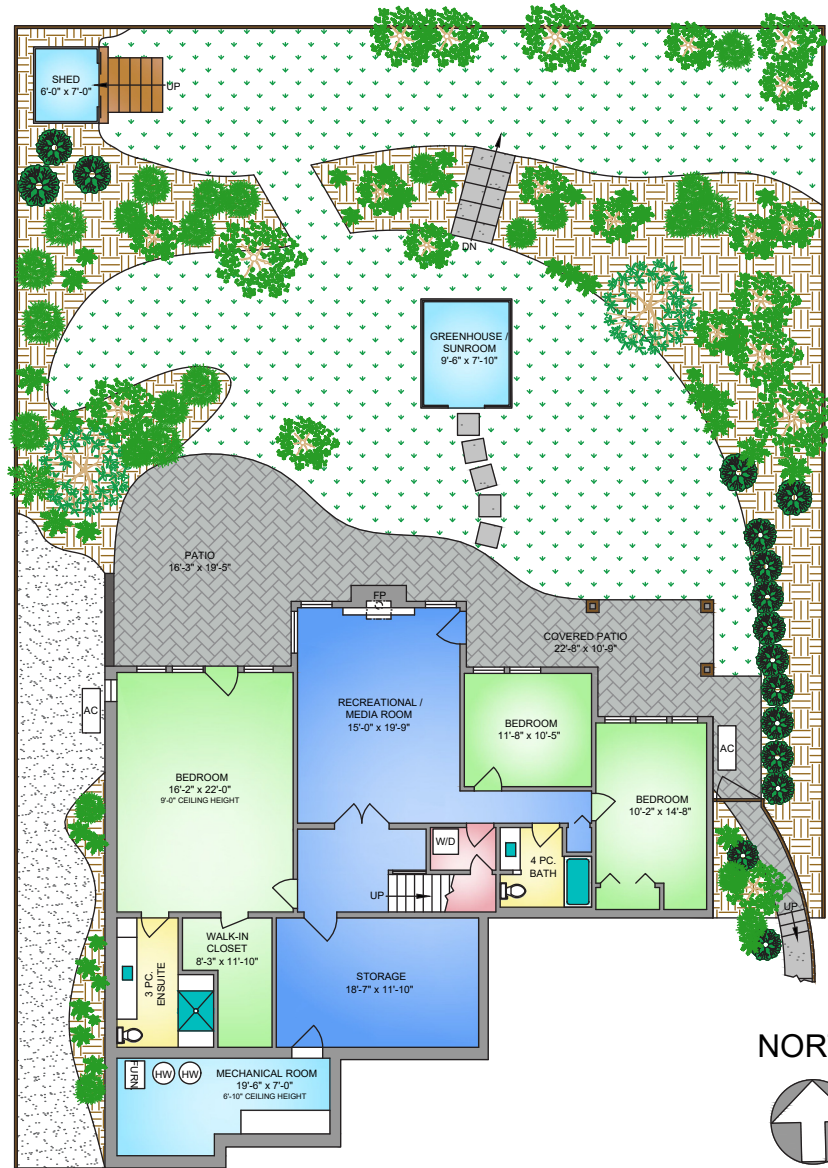


Property Floorplan

Main Floor 1,986 sq. ft.
Upper Floor 1,984 sq. ft.

TOTAL AREA 3,970 sq. ft.

Garage 488 sq. ft.
Deck/Patio 1,372 sq. ft.



LOWER FLOOR
1984 SQ. FT.
9'-0" CEILING HEIGHT

NORTH



0' 5' 10'
SCALE

* DIMENSIONS ARE FOR REFERENCE PURPOSES ONLY AND ARE NOT TAKEN FROM ORIGINAL BLUEPRINTS



Property Photos

EXTERIOR





Property Photos

INTERIOR





Property Photos

KITCHEN





Property Photos

PRIMARY BEDROOM
& ENSUITE





Property Photos

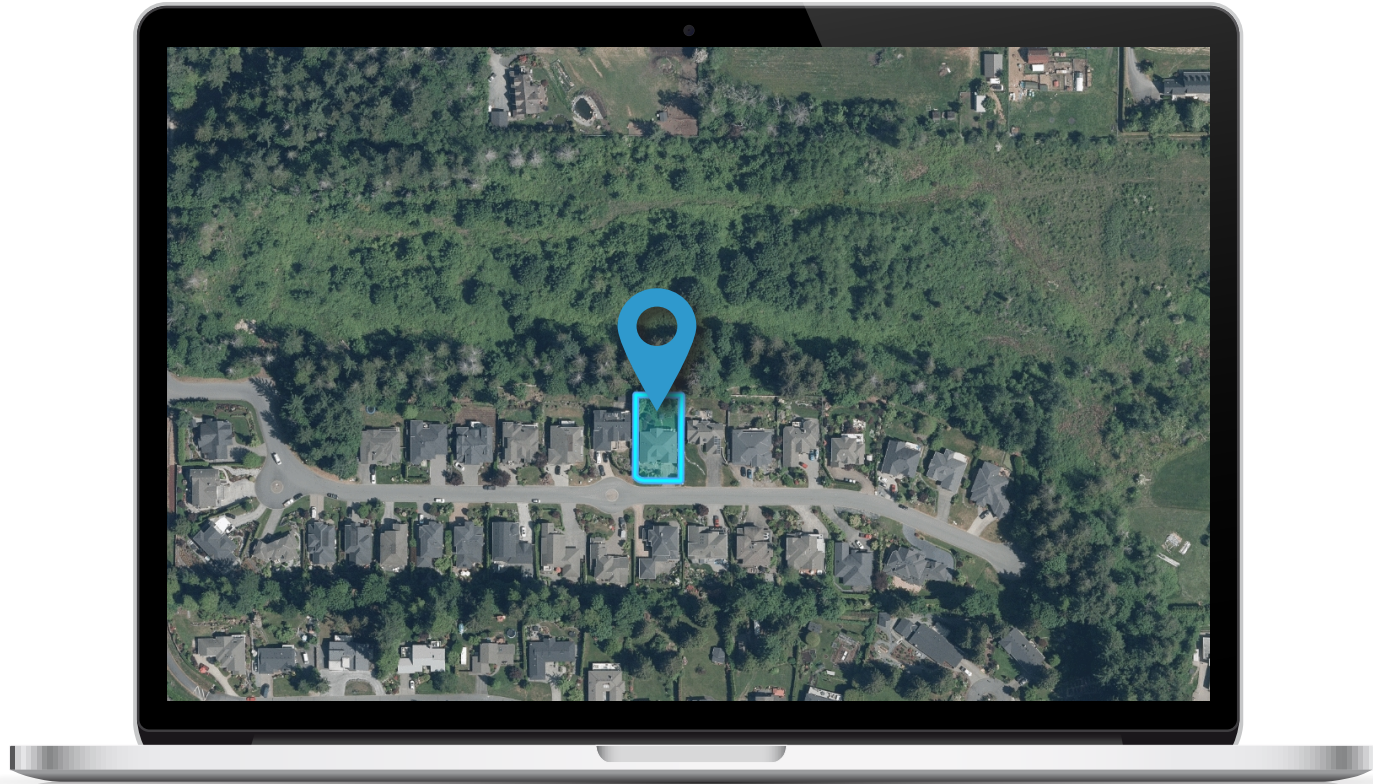
EXTERIOR

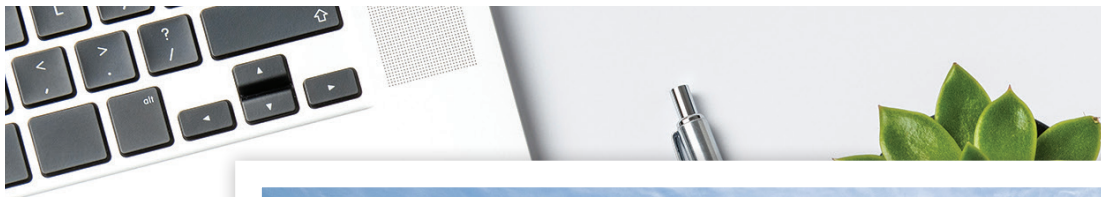




Location

(GIS) MAPPING





 **CHACE
WHITSON**
PERSONAL REAL ESTATE CORPORATION

 **Macdonald
Realty**



CEL · 250 818 9338 | TEL · 778 426 2262

Chace@ChaceWhitson.com | ChaceWhitson.com

2411 · Bevan Avenue Sidney, BC · V8L 4M9





**CHACE
WHITSON**
PERSONAL REAL ESTATE CORPORATION



Chace Whitson | 250.818.9338 | Chace@ChaceWhitson.com | ChaceWhitson.com