

1395 McTAVISH

North Saanich





FOR SALE



1395 McTavish Road

North Saanich

SUMMARY OVERVIEW



LISTING PRICE: \$2,695,000



LIVING AREA: 3,561 sq. ft.



BEDROOMS: 7



BATHROOMS: 4



Set on a quiet, tree-lined street in the heart of North Saanich sits a picturesque, 6.88-acre property. Sun-drenched, with rolling fields and fruit trees, the property is home to a 5-Bed, 3-Bath, 2907-sqft. main house as well as a 2-Bed, 1-Bath, 654-sqft. suite. This split-level design offers second-story living with an open layout. Enjoy a country kitchen with shaker cabinetry, warm wood tones, and a large island. An open dining and living area offer a connected feel among the spaces, while French doors and windows offer a seamless connection to the outdoors. 3 Bedrooms, including the primary suite, make up the second floor, with an additional 2 bedrooms on the main level. Also on the main level is the suite. With a private entrance and patio space, the suite offers the same light, bright, and airy feel and garden views. Zoned RA-3, the property offers a number of farming opportunities. Enjoy the rural setting, while being just minutes from local schools, parks, trails, and beaches.

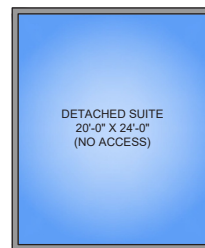


Property Floorplan

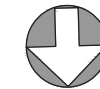
Main Floor 1,554 sq. ft.
Upper Floor 2,007 sq. ft.

TOTAL AREA 3,561 sq. ft.

Carport 201 sq. ft.
Deck/Patio 1,133 sq. ft.



NORTH



0' 5' 10'
SCALE

* DIMENSIONS ARE FOR REFERENCE PURPOSES ONLY AND ARE NOT TAKEN FROM ORIGINAL BLUEPRINTS

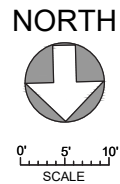


Property Floorplan

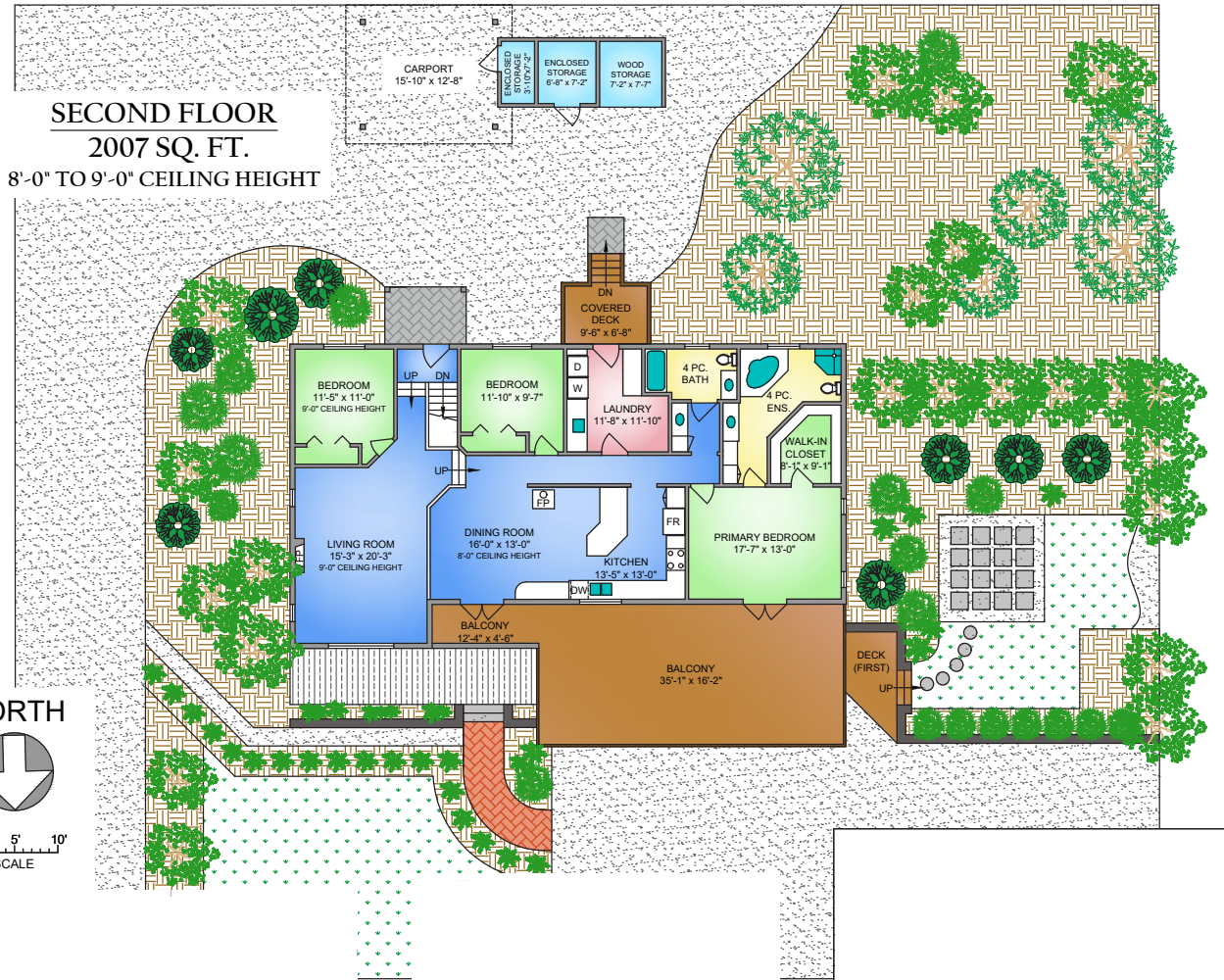
Main Floor 1,554 sq. ft.
Upper Floor 2,007 sq. ft.

TOTAL AREA 3,561 sq. ft.

Carport 201 sq. ft.
Deck/Patio 1,133 sq. ft.



SECOND FLOOR 2007 SQ. FT. 8'-0" TO 9'-0" CEILING HEIGHT



* DIMENSIONS ARE FOR REFERENCE PURPOSES ONLY AND ARE NOT TAKEN FROM ORIGINAL BLUEPRINTS



Property Photos

EXTERIOR





Property Photos

INTERIOR





Property Photos

KITCHEN





Property Photos

PRIMARY BEDROOM
& ENSUITE





Property Photos

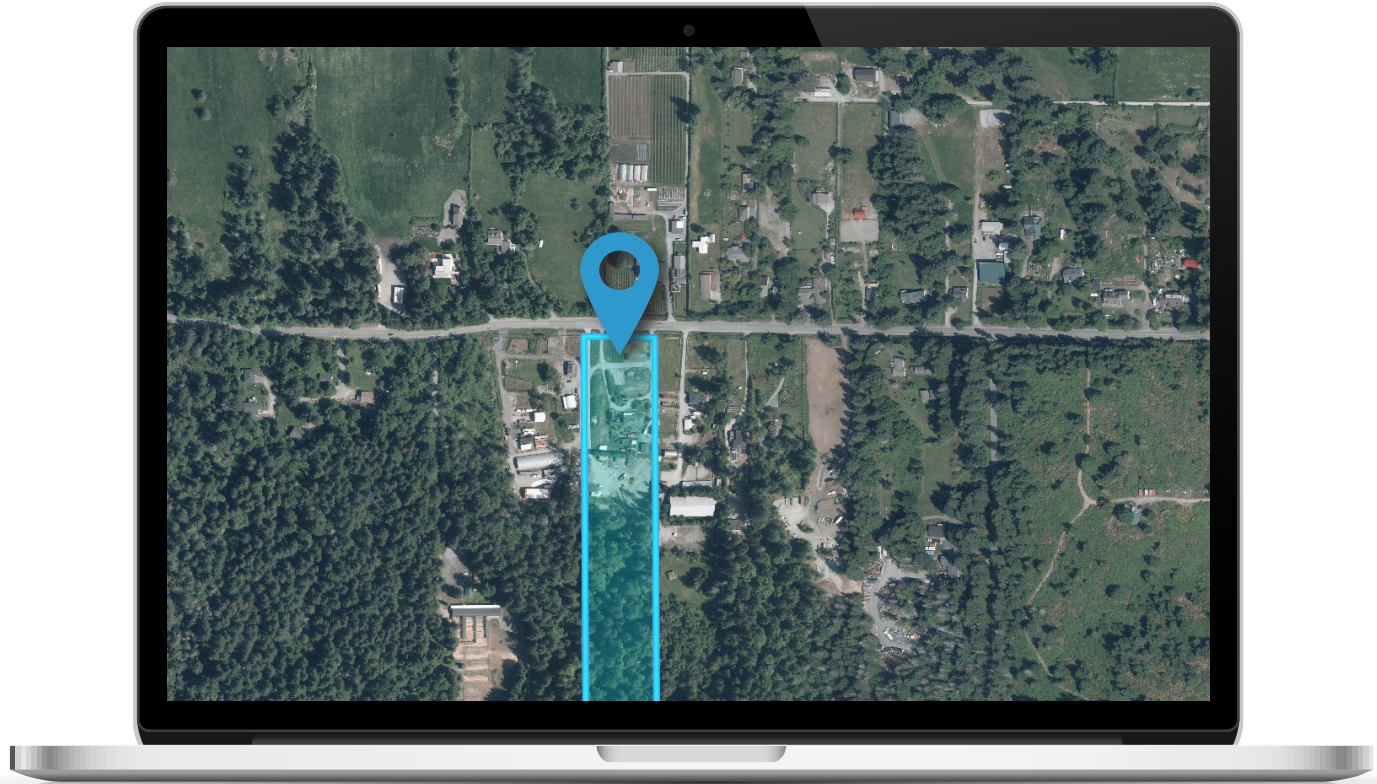
EXTERIOR





Location

(GIS) MAPPING





 **CHACE
WHITSON**
PERSONAL REAL ESTATE CORPORATION


**Macdonald
Realty**



CEL · 250 818 9338 | TEL · 778 426 2262

Chace@ChaceWhitson.com | ChaceWhitson.com

2411 · Bevan Avenue Sidney, BC · V8L 4M9





**CHACE
WHITSON**
PERSONAL REAL ESTATE CORPORATION



Chace Whitson | 250.818.9338 | Chace@ChaceWhitson.com | ChaceWhitson.com