

746 SEA

Brentwood Bay





FOR SALE



746 Sea Drive

Brentwood Bay

SUMMARY OVERVIEW



LISTING PRICE: \$2,100,000



LIVING AREA: 1,604 sq. ft.



BEDROOMS: 3



BATHROOMS: 2



Discover waterfront living in the Saanich Inlet with this charming 3-bed, 1-bath home featuring predominantly single-level living and a partially finished basement. Enjoy endless possibilities for expansion on the .35 acres of private property with direct access to the water. Highlights include a 30 ft. private dock with deep-water moorage, foreshore lease, small boat winch, and a quaint 1-bed 1-bath 287 sq.ft seaside cottage. The main level boasts stunning ocean views, and a functional floor plan, while the lower level offers potential for expansion or additional storage. Outside, enjoy over 1,000 sq. ft. of sundecks and a beautifully landscaped yard. Experience stunning sunsets and private moorage in the Saanich Inlet from this truly spectacular property.

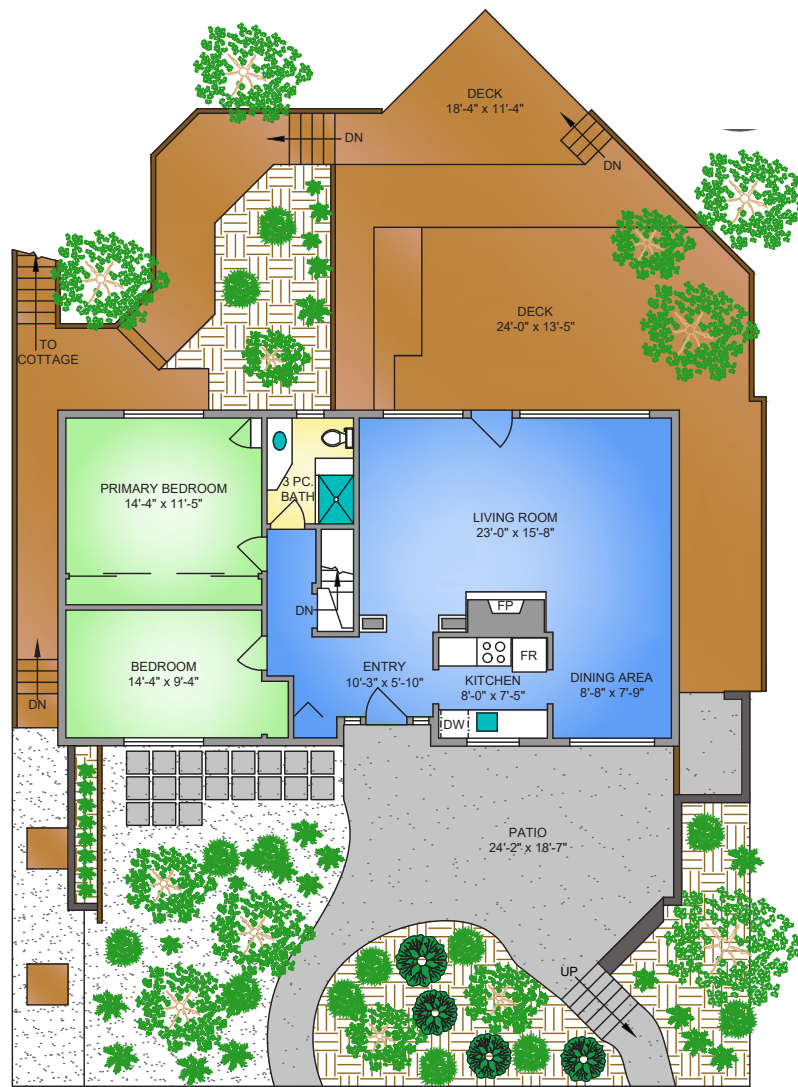


Property Floorplan

Main Floor 1,111 sq. ft.
 Lower Floor 112 sq. ft.
 Detached Bath 85 sq. ft.

TOTAL AREA 1,604 sq. ft.

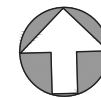
Unfinished 470 sq. ft.
 Deck/Patio 1,200 sq. ft.



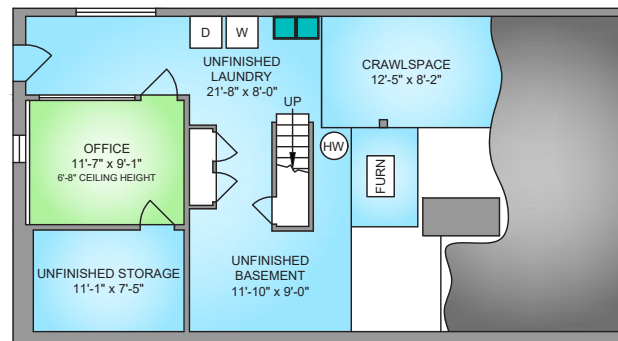
MAIN FLOOR
1111 SQ. FT.
 8' CEILING HEIGHT

LOWER FLOOR
121 SQ. FT.
 6'-10" CEILING HEIGHT

NORTH

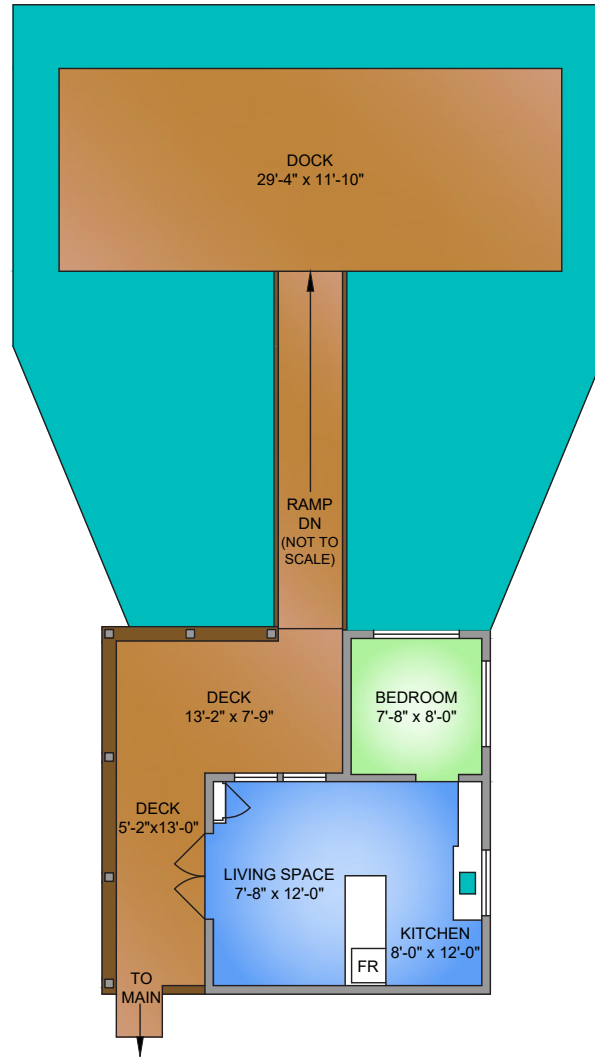


0' 5' 10'
 SCALE

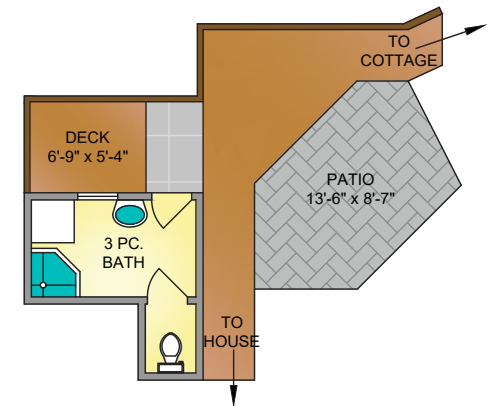


* DIMENSIONS ARE FOR REFERENCE PURPOSES ONLY AND ARE NOT TAKEN FROM ORIGINAL BLUEPRINTS

COTTAGE
287 SQ. FT.
8' CEILING HEIGHT



DETACHED BATH
85 SQ. FT.
8' CEILING HEIGHT



NORTH



0' 3' 6'
SCALE



Property Floorplan

Main Floor	1,111 sq. ft.
Lower Floor	112 sq. ft.
Detached Bath	85 sq. ft.

TOTAL AREA 1,604 sq. ft.

Unfinished	470 sq. ft.
Deck/Patio	1,200 sq. ft.

* DIMENSIONS ARE FOR REFERENCE PURPOSES ONLY AND ARE NOT TAKEN FROM ORIGINAL BLUEPRINTS



Property Photos

EXTERIOR





Property Photos

KITCHEN





Property Photos

INTERIOR





Property Photos

PRIMARY BEDROOM & ENSUITE





Property Photos

EXTERIOR





Location

(GIS) MAPPING





 **CHACE
WHITSON**
PERSONAL REAL ESTATE CORPORATION


Macdonald
Realty



CEL · 250 818 9338 | TEL · 778 426 2262

Chace@ChaceWhitson.com | ChaceWhitson.com

2411 · Bevan Avenue Sidney, BC · V8L 4M9





**CHACE
WHITSON**
PERSONAL REAL ESTATE CORPORATION



Chace Whitson | 250.818.9338 | Chace@ChaceWhitson.com | ChaceWhitson.com