

10950 GREENPARK

North Saanich





FOR SALE



10950 Greenpark Drive

Horth Hill, North Saanich

SUMMARY OVERVIEW



LISTING PRICE: \$2,199,900 + GST



LIVING AREA: 3,904 sq. ft.



BEDROOMS: 5



BATHROOMS: 6



Brand New and Ready To Be Yours! Located in one of North Saanich's most sought-after areas sits a stunning 5-Bed, 6-Bath, 3904-sq.ft. home. Custom-built, with soaring ceilings, expansive windows, and featured wainscotting, the home perfectly balances its elegance with the natural beauty that surrounds it. A gourmet kitchen, with integrated Fisher & Paykel appliances, an oversized island, and walk-in pantry, seamlessly connects to the dining and living areas, where 20-ft vaulted ceilings define the space, offering a grand feeling throughout. Thoughtfully designed, the home features a spacious great room, main-floor office, and a combined mudroom and laundry space off the garage. 4 bedrooms are on the second floor, including a lux primary suite, with a walk-in closet and spa-inspired ensuite, as well as a rec room and self-contained, 1-Bed/1-Bath suite. Located in the heart of North Saanich, close to beaches, parks, and trails, and just minutes from local schools, markets, and shops.

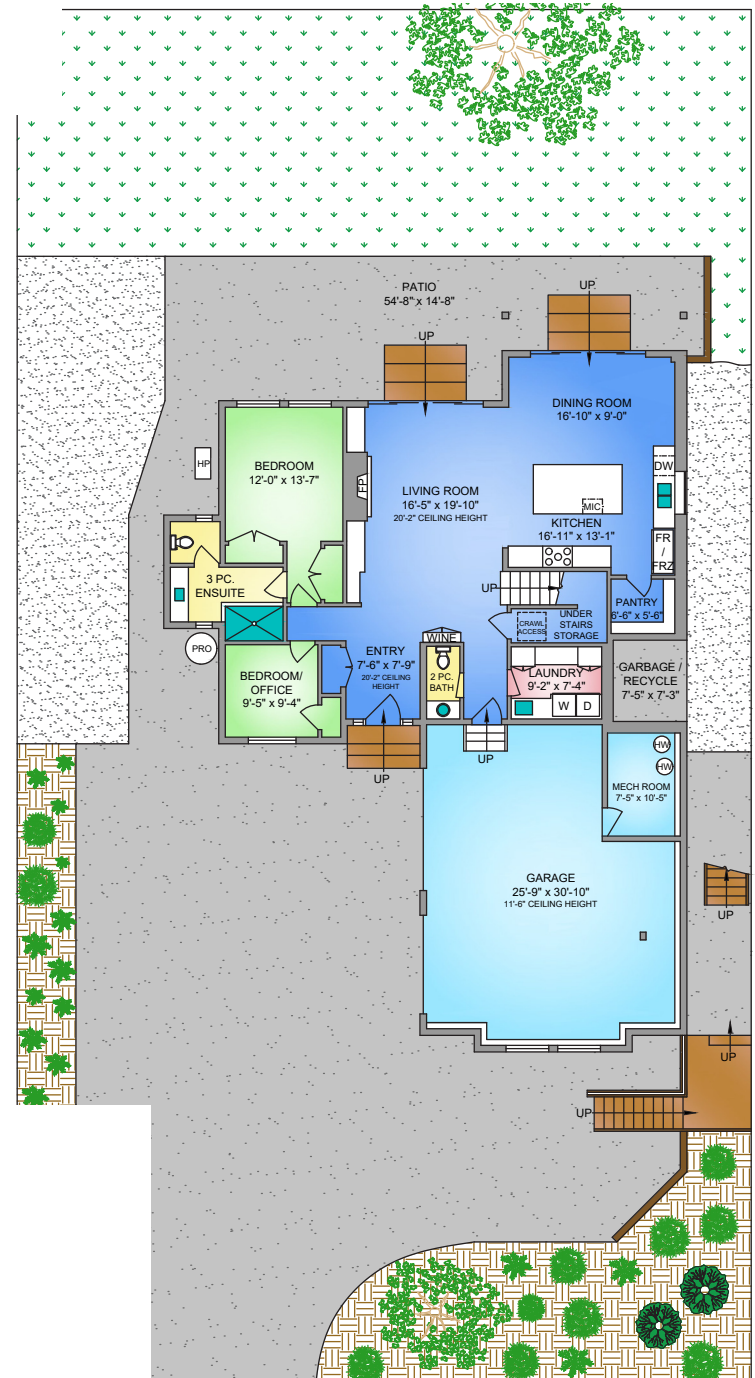
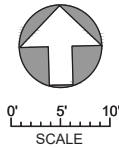


Property Floorplan

Main Floor	1,678 sq. ft.
Upper Floor	2,226 sq. ft.
TOTAL AREA	3,904 sq. ft.
Garage	880 sq. ft.
Deck/Patio	625 sq. ft.
Lot Size	0.56 acres

MAIN FLOOR
1678 SQ. FT.
10'-0" CEILING HEIGHT

NORTH



* DIMENSIONS ARE FOR REFERENCE PURPOSES ONLY AND ARE NOT TAKEN FROM ORIGINAL BLUEPRINTS



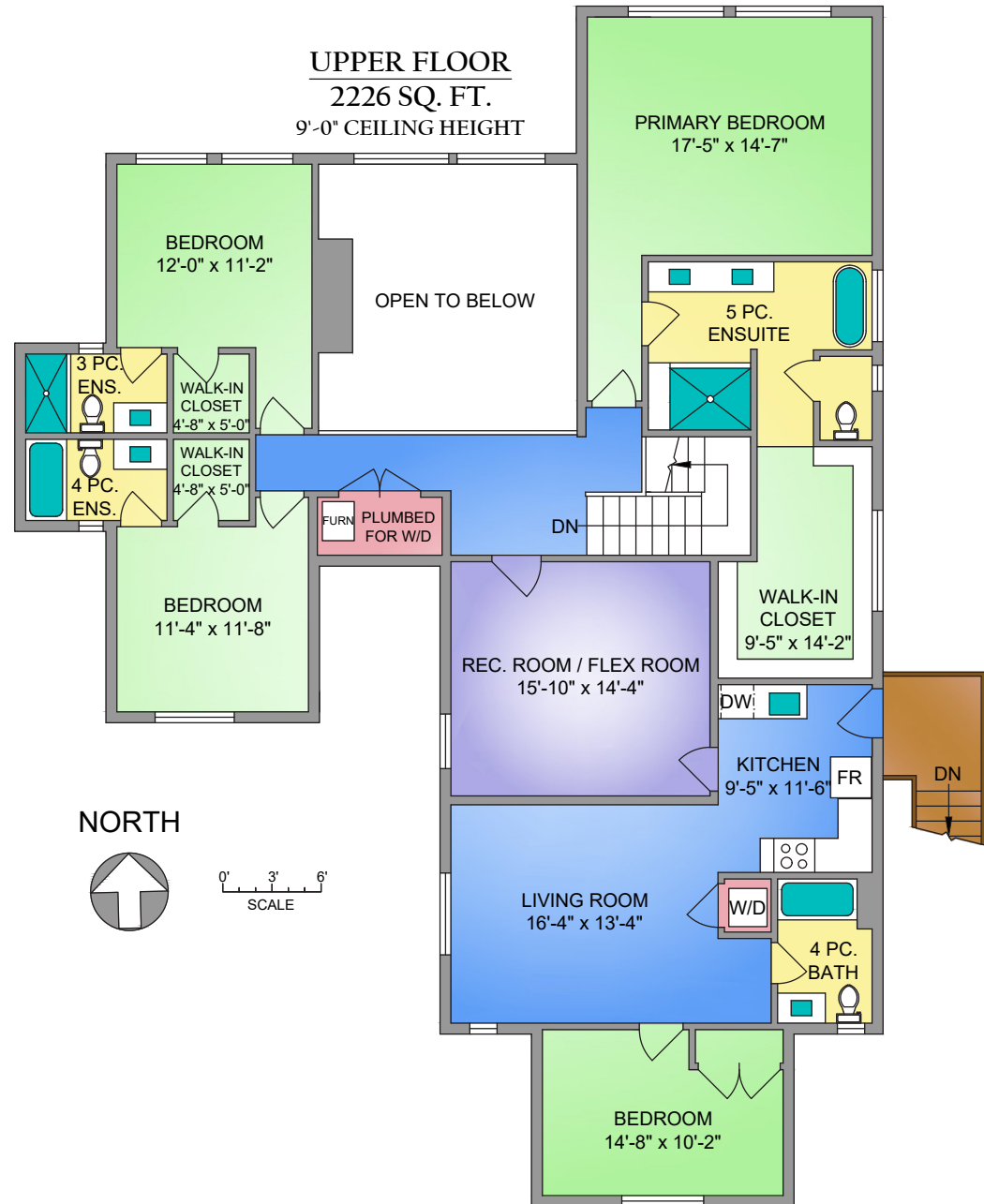
Property Floorplan

Main Floor 1,678 sq. ft.
Upper Floor 2,226 sq. ft.

TOTAL AREA 3,904 sq. ft.

Garage 880 sq. ft.
Deck/Patio 625 sq. ft.

Lot Size 0.56 acres



* DIMENSIONS ARE FOR REFERENCE PURPOSES ONLY AND ARE NOT TAKEN FROM ORIGINAL BLUEPRINTS



Property Photos

EXTERIOR





Property Photos

INTERIOR





Property Photos

KITCHEN





Property Photos

PRIMARY BEDROOM & ENSUITE





Property Photos

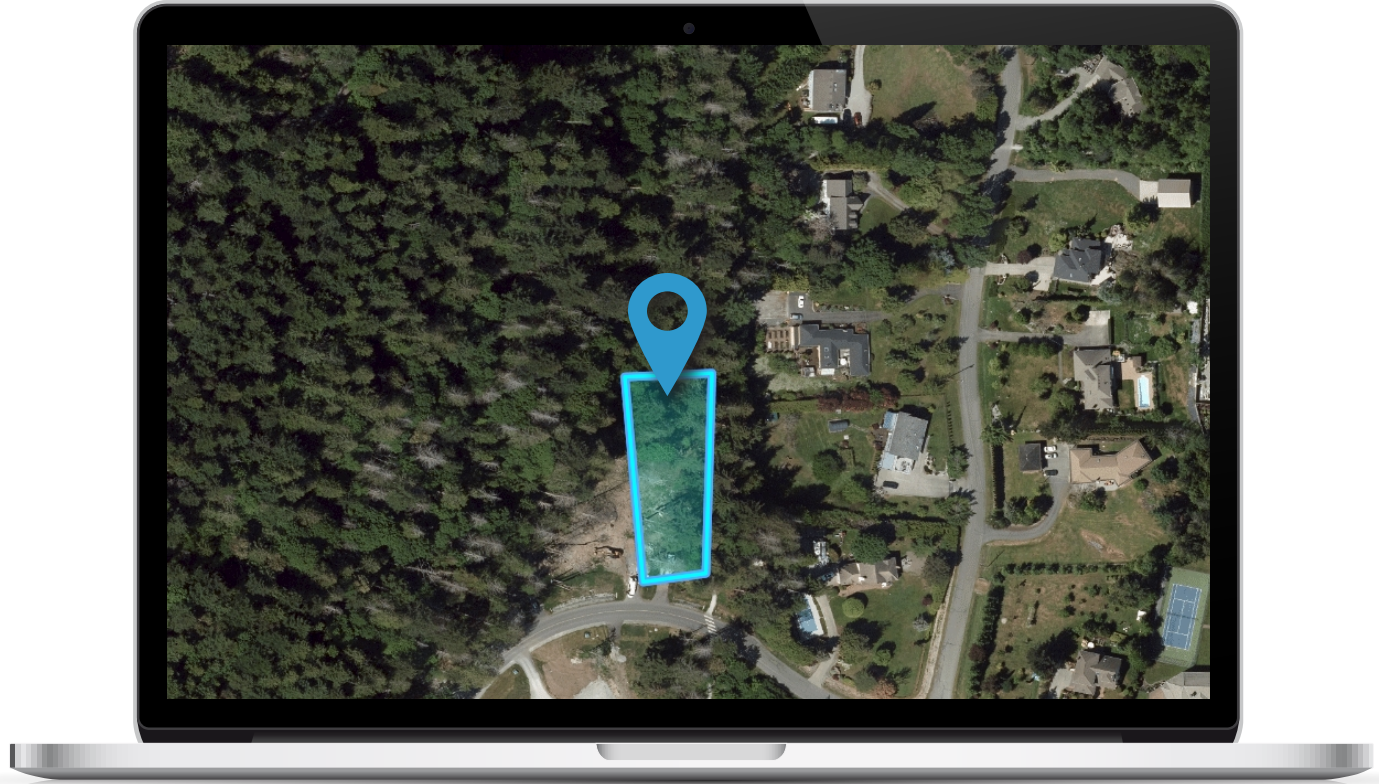
EXTERIOR





Location

(GIS) MAPPING





 **CHACE
WHITSON**
PERSONAL REAL ESTATE CORPORATION


Macdonald
Realty



CEL · 250 818 9338 | TEL · 778 426 2262

Chace@ChaceWhitson.com | ChaceWhitson.com

2411 · Bevan Avenue Sidney, BC · V8L 4M9





**CHACE
WHITSON**
PERSONAL REAL ESTATE CORPORATION



Chace Whitson | 250.818.9338 | Chace@ChaceWhitson.com | ChaceWhitson.com