

10841 GREENPARK

North Saanich





FOR SALE



10841 Greenpark Drive

Horth Hill, North Saanich

SUMMARY OVERVIEW



LISTING PRICE:

\$1,995,000



LIVING AREA:

2,710 sq. ft.



BEDROOMS:

4



BATHROOMS:

3



Welcome to 10841 Greenpark Drive, a stunning rancher nestled on a 0.472-acre lot in the prestigious Greenpark Estates subdivision. This 3 bed /3 bath + den home boasts timeless exterior architecture and exquisite interior detailing, exuding both style and charm. Key features include a magazine-worthy kitchen with a gas range, high-end appliances, an oversized island, and a walk-in pantry, along with soaring ceilings and expansive windows that flood the space with natural light. The main-floor primary suite offers a luxurious retreat with a deluxe ensuite and a spacious walk-in closet. Step outside to enjoy the spectacular outdoor living area, complete with a large sundeck and a picturesque yard surrounded by mature trees, offering ultimate privacy. Additional highlights include a heat pump with A/C and a double-car garage. Just steps from Horth Hill Regional Park, this newly constructed home presents a rare opportunity to enjoy modern luxury in an idyllic, sought-after setting.



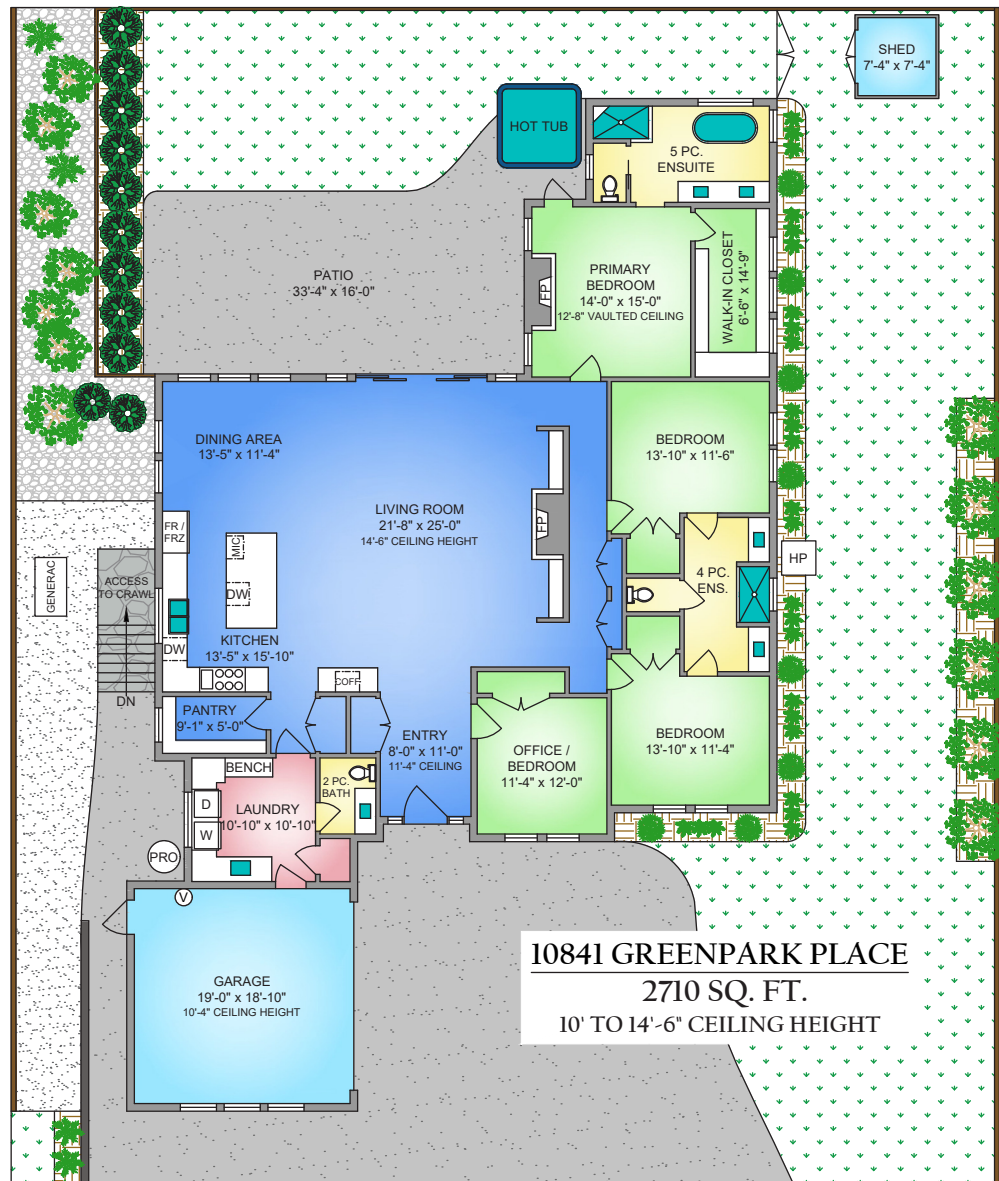
Property Floorplan

MAIN FLOOR 2,710 sq. ft.

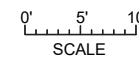
Garage 402 sq. ft.

Patio 576 sq. ft.

Lot Size 0.472 acres



NORTH



SCALE

* DIMENSIONS ARE FOR REFERENCE PURPOSES ONLY AND ARE NOT TAKEN FROM ORIGINAL BLUEPRINTS



Property Photos

EXTERIOR





Property Photos

INTERIOR





Property Photos

KITCHEN





Property Photos

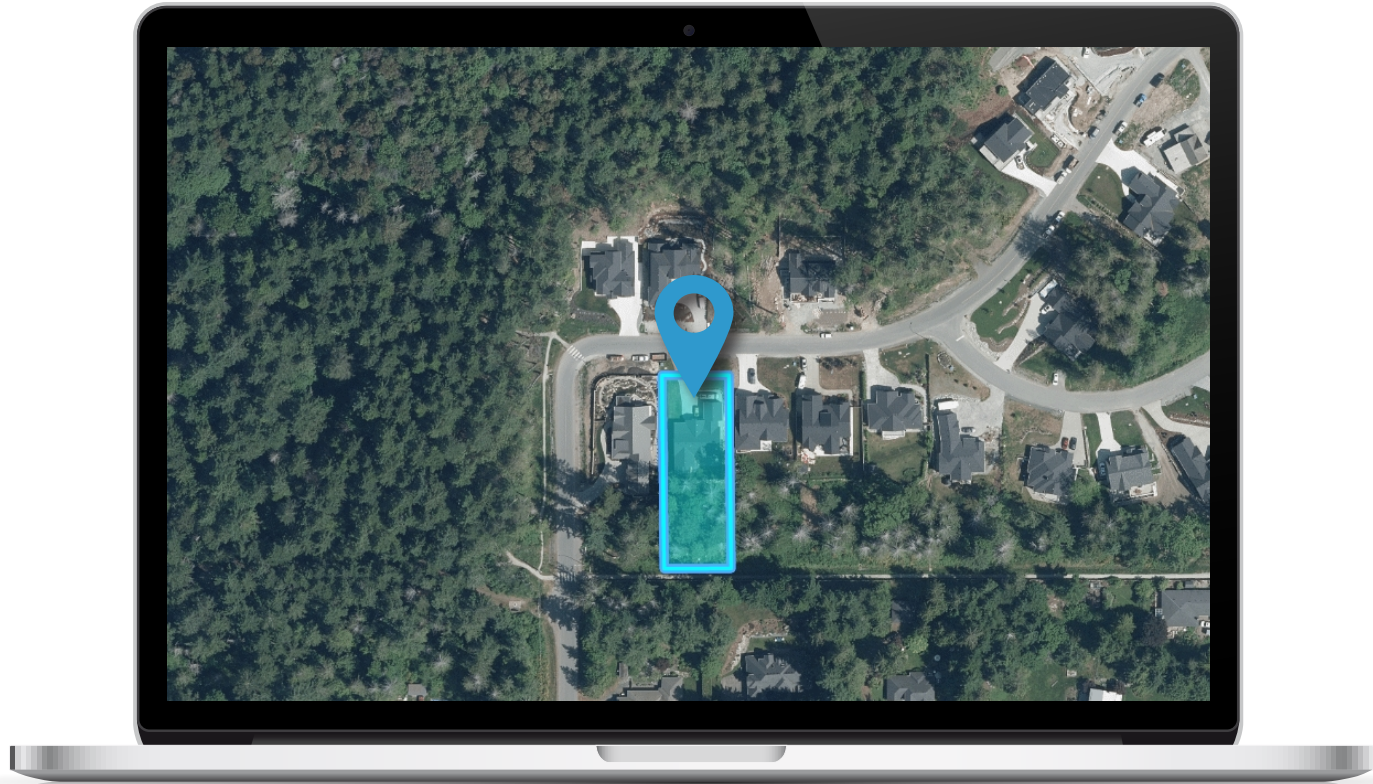
PRIMARY BEDROOM & ENSUITE





Location

(GIS) MAPPING





 **CHACE
WHITSON**
PERSONAL REAL ESTATE CORPORATION


**Macdonald
Realty**



CEL · 250 818 9338 | TEL · 778 426 2262

Chace@ChaceWhitson.com | ChaceWhitson.com

2411 · Bevan Avenue Sidney, BC · V8L 4M9





**CHACE
WHITSON**
PERSONAL REAL ESTATE CORPORATION



Chace Whitson | 250.818.9338 | Chace@ChaceWhitson.com | ChaceWhitson.com