

# 7178 MARK LANE

Central Saanich





FOR SALE



## 7178 Mark Lane

### SUMMARY OVERVIEW



LISTING PRICE: \$4,500,000



LIVING AREA: 7,091 sq. ft.



BEDROOMS: 3



BATHROOMS: 4



Set on a near acre of pristine waterfront sits an impressive 3-Bed, 4-Bath, 7091-sqft. property. Overlooking the protected waters of Saanich Inlet, the home enjoys an unparalleled location with sweeping, 180-degree ocean views and west-facing exposure. A thoughtful floorplan with an open layout, wall-to-wall picture windows, and vaulted ceilings seamlessly brings the outside in with stunning views throughout. The home's design offers architectural detailing, from custom stone and millwork to nuanced crown molding, with lux finishes. Outdoors provides the same attention to detail with meticulously kept grounds, tailored, tiered gardens, and paver walkways, as well as a swimmable waterfront, slipway boat launch, deep water dock, and upper and lower patio spaces. Enjoy coastal living at its finest. Located on the Saanich Peninsula in beautiful Willis Point, the home is close to local parks, trails, beaches, and schools.



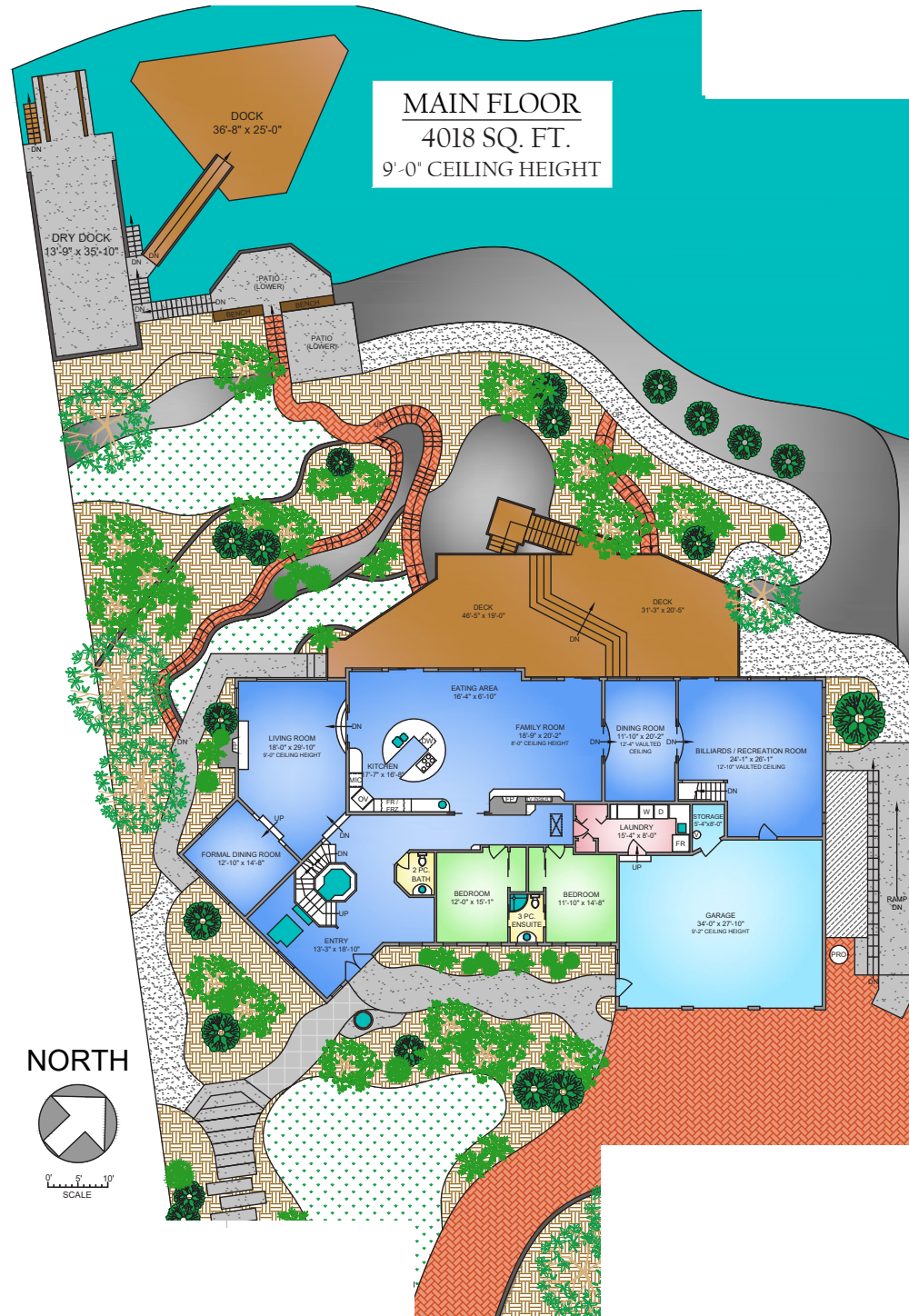
# Property Floorplan

Main 4,018 sq. ft.  
 Upper 1,102 sq. ft.  
 Lower 1,971 sq. ft.

**TOTAL AREA 7,091 sq. ft.**

Garage 1,001 sq. ft.  
 Deck/Patio 1,357 sq. ft.  
 Unfinished 660 sq. ft.

Lot Size 0.975 Acres



\* DIMENSIONS ARE FOR REFERENCE PURPOSES ONLY AND ARE NOT TAKEN FROM ORIGINAL BLUEPRINTS



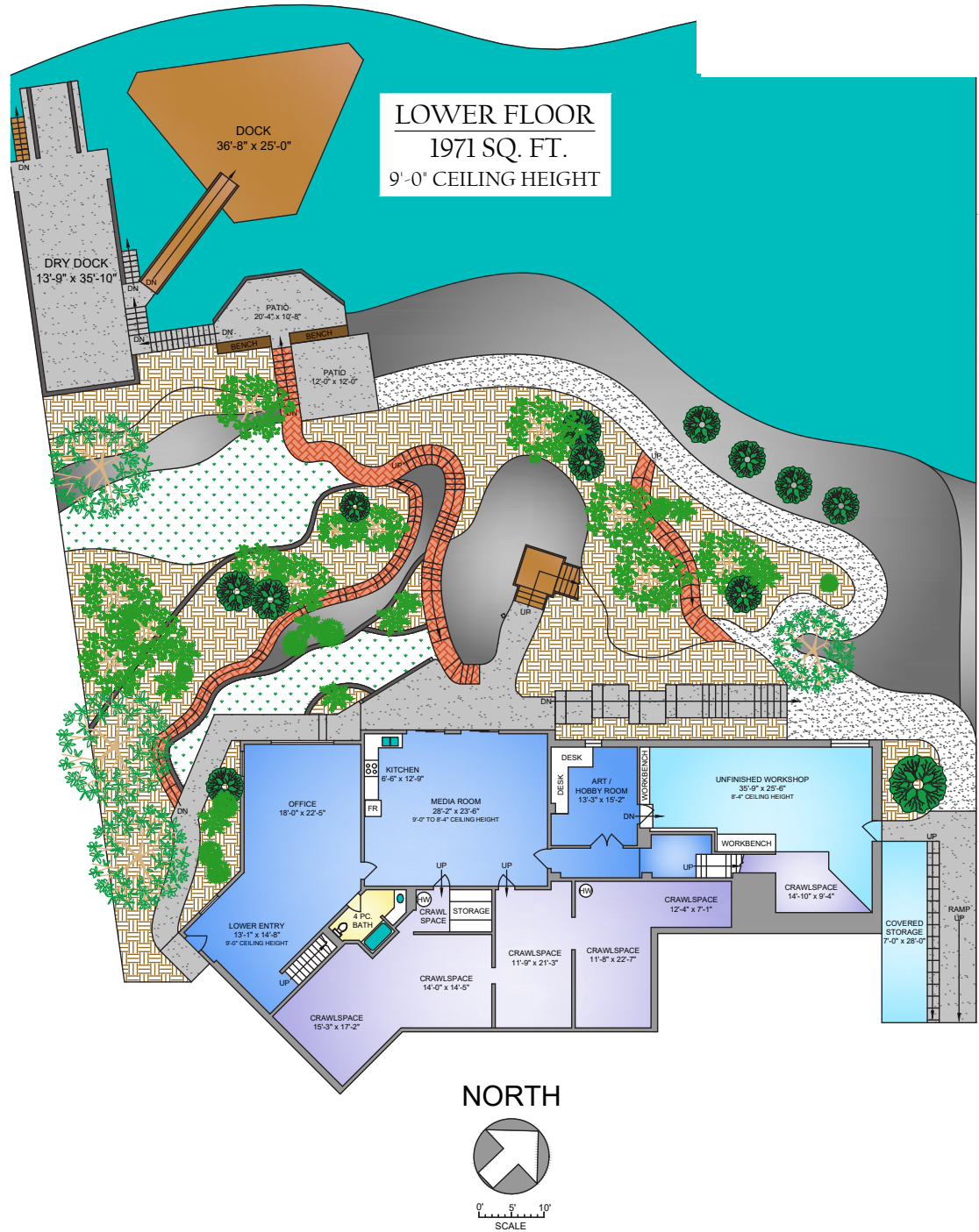
# Property Floorplan

Main 4,018 sq. ft.  
 Upper 1,102 sq. ft.  
 Lower 1,971 sq. ft.

**TOTAL AREA 7,091 sq. ft.**

Garage 1,001 sq. ft.  
 Deck/Patio 1,357 sq. ft.  
 Unfinished 660 sq. ft.

Lot Size 0.975 Acres



\* DIMENSIONS ARE FOR REFERENCE PURPOSES ONLY AND ARE NOT TAKEN FROM ORIGINAL BLUEPRINTS



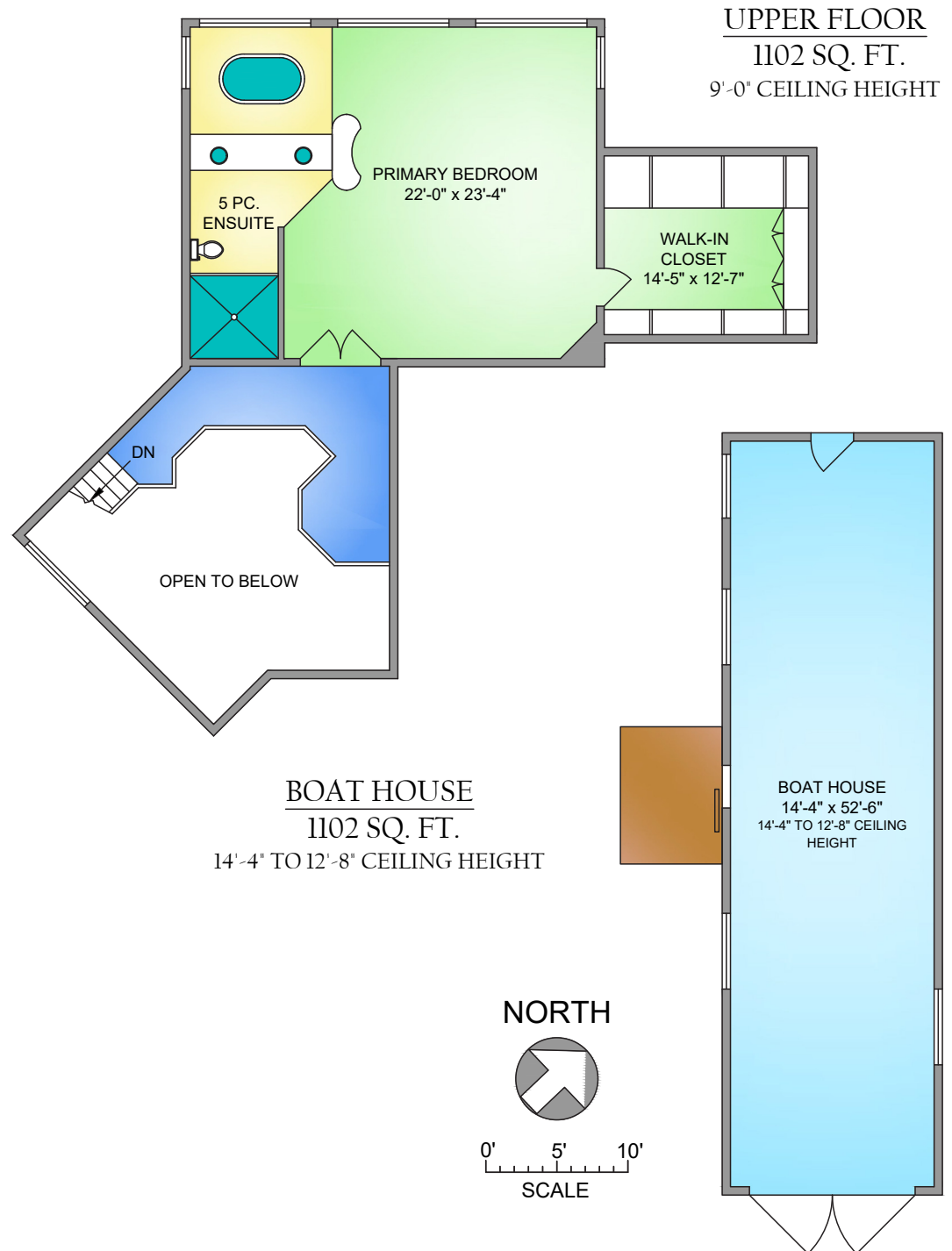
# Property Floorplan

Main 4,018 sq. ft.  
Upper 1,102 sq. ft.  
Lower 1,971 sq. ft.

**TOTAL AREA 7,091 sq. ft.**

Garage 1,001 sq. ft.  
Deck/Patio 1,357 sq. ft.  
Unfinished 660 sq. ft.

Lot Size 0.975 Acres



\* DIMENSIONS ARE FOR REFERENCE PURPOSES ONLY AND ARE NOT TAKEN FROM ORIGINAL BLUEPRINTS



## Property Photos

EXTERIOR





# Property Photos

## KITCHEN







# Property Photos

INTERIOR





# Property Photos

## PRIMARY BEDROOM & ENSUITE





# Property Photos

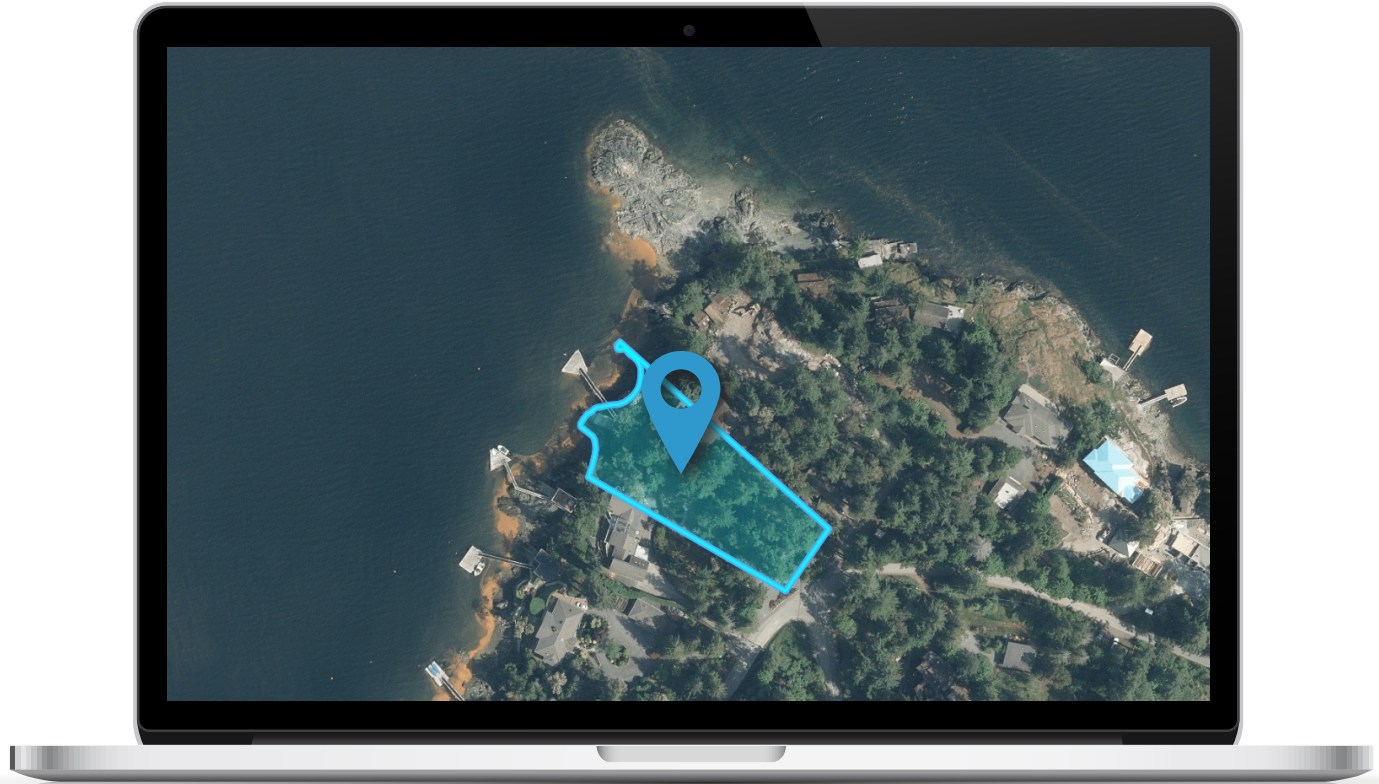
INTERIOR





# Location

(GIS) MAPPING





 **CHACE  
WHITSON**  
PERSONAL REAL ESTATE CORPORATION

 **Macdonald  
Realty**



CEL · 250 818 9338 | TEL · 778 426 2262

[Chace@ChaceWhitson.com](mailto:Chace@ChaceWhitson.com) | [ChaceWhitson.com](http://ChaceWhitson.com)

2411 · Bevan Avenue Sidney, BC · V8L 4M9





**CHACE  
WHITSON**  
PERSONAL REAL ESTATE CORPORATION



Chace Whitson | 250.818.9338 | [Chace@ChaceWhitson.com](mailto:Chace@ChaceWhitson.com) | [ChaceWhitson.com](http://ChaceWhitson.com)