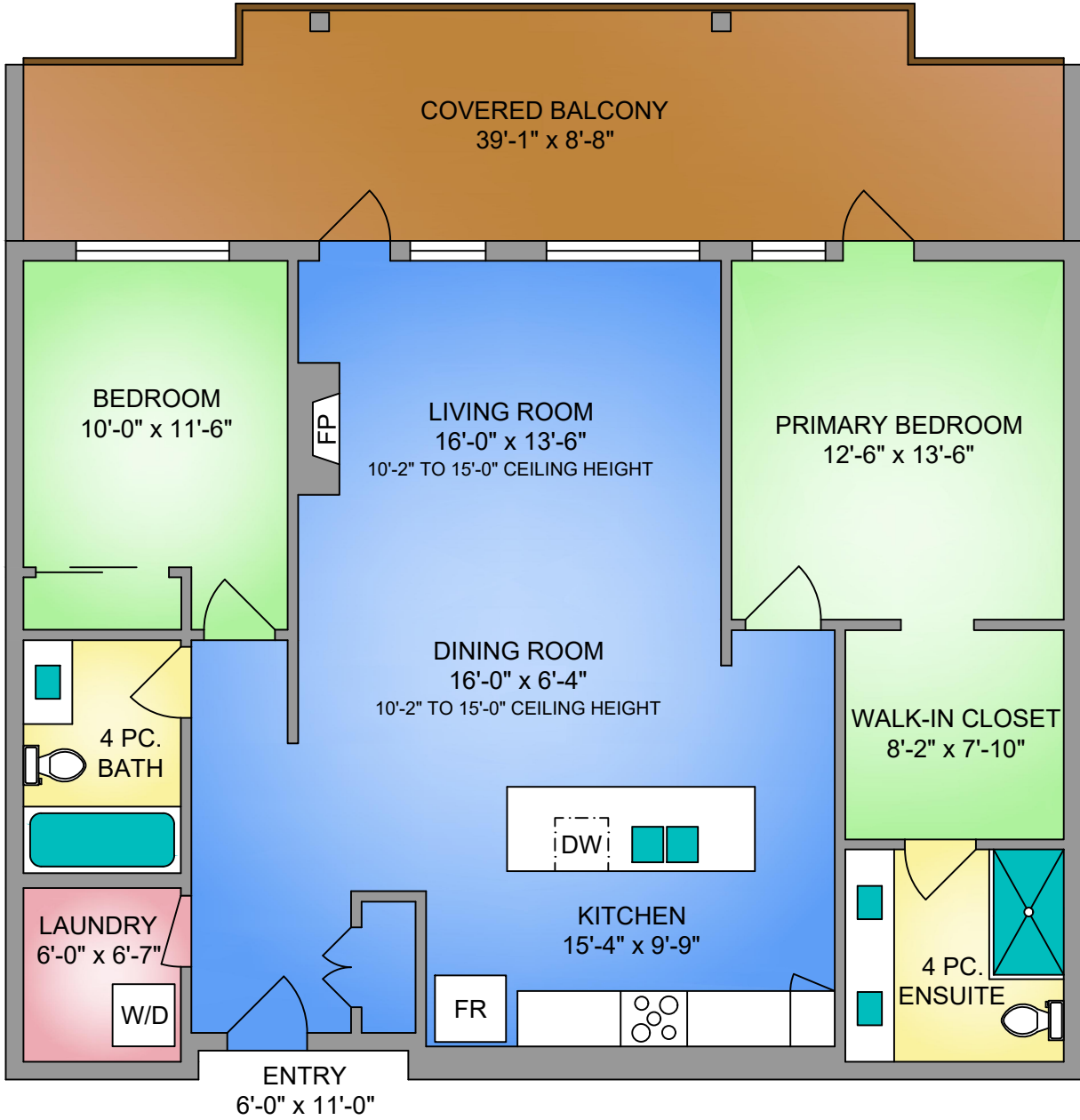


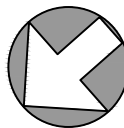
UNIT 404 - 10660 McDONALD PARK ROAD

1209 SQ. FT.

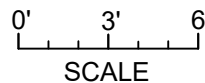
9'-0" CEILING HEIGHT



NORTH



250-884-9753
 matt@propermeasure.com
 www.propermeasure.com



UNIT 404 - 10660 McDONALD PARK ROAD		
JULY 11, 2024		
PREPARED FOR THE EXCLUSIVE USE OF CHACE WHITSON PLANS MAY NOT BE 100% ACCURATE, IF CRITICAL BUYER TO VERIFY.		
FLOOR	AREA (SQ. FT.)	
	FINISHED	BALCONY
FOURTH	1209	320