

8381 LOCHSIDE

Saanichton





FOR SALE



8381 Lochside Drive

Saanichton

SUMMARY OVERVIEW



LISTING PRICE: \$2,999,000



LIVING AREA: 3,560 sq. ft.



BEDROOMS: 5



BATHROOMS: 5



Set on over an acre of pristine, low-bank waterfront sits Heron's Retreat, a 3,457-sqft. residence with panoramic ocean, island, and mountain views. Designed to appreciate its seaside setting, the home enjoys views at every opportunity with floor-to-ceiling windows, wrap-around verandas, and an effortless indoor/outdoor flow. The property offers a convenient split-level layout, thoughtful updates throughout, including custom cabinetry, granite countertops, and hardwood flooring, and two, 1-Bed, 1-Bath oceanfront, garden suites. Spanning 1.29 acres, enjoy a private boathouse with a rooftop deck, masonry landscaping, and over 3000 sqft. of patio space. With 128 ft. of oceanfront, and mere steps to the sand, this home offers true coastal living. Located in beautiful Saanichton, close to local schools, parks, and trails, and just a 5-minute drive to downtown Sidney. Priced below assessed value, this home is a must-see!

FIRST FLOOR
1792 SQ. FT.
8' CEILING HEIGHT



Property Floorplan

First 1,792 sq. ft.
 Second 1,665 sq. ft.

TOTAL AREA 3,560 sq. ft.

Garage 489 sq. ft.
 Deck/Patio 3,174 sq. ft.
 Carport 133 sq. ft.
 Office 103 sq. ft.



* DIMENSIONS ARE FOR REFERENCE PURPOSES ONLY AND ARE NOT TAKEN FROM ORIGINAL BLUEPRINTS



Property Floorplan

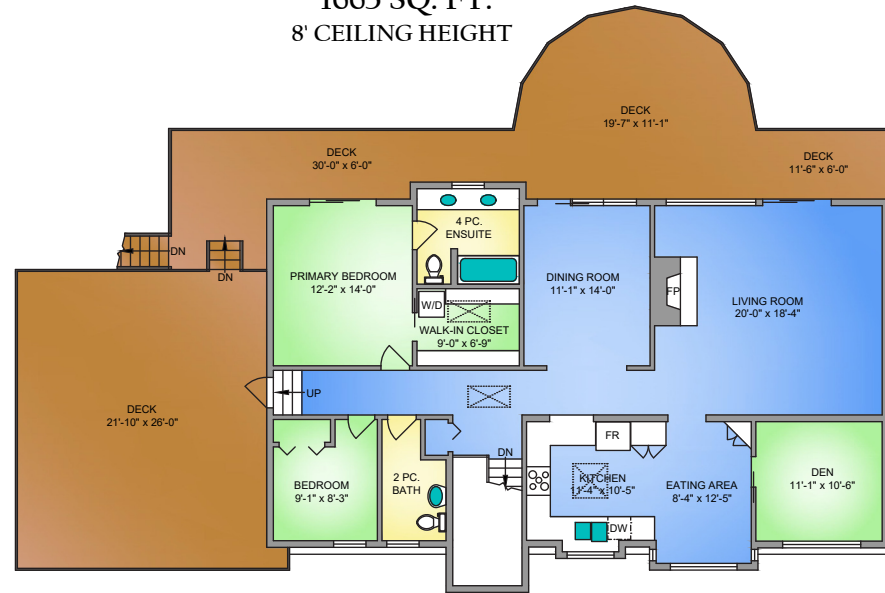
First 1,792 sq. ft.
 Second 1,665 sq. ft.

TOTAL AREA 3,560 sq. ft.

Garage 489 sq. ft.
 Deck/Patio 3,174 sq. ft.
 Carport 133 sq. ft.
 Office 103 sq. ft.

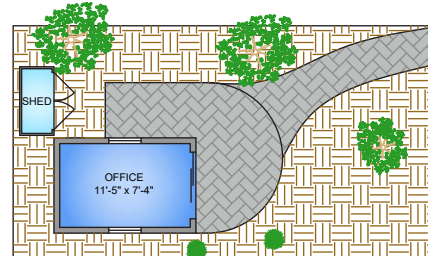
SECOND FLOOR

1665 SQ. FT.
 8' CEILING HEIGHT

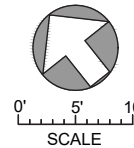


OFFICE

103 SQ. FT.
 7'-2" VAULTED CEILING



NORTH



* DIMENSIONS ARE FOR REFERENCE PURPOSES ONLY AND ARE NOT TAKEN FROM ORIGINAL BLUEPRINTS

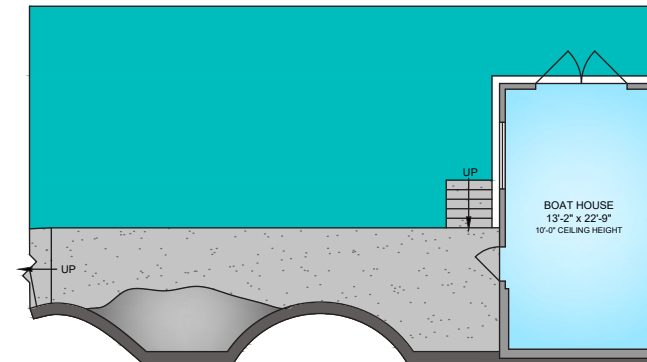
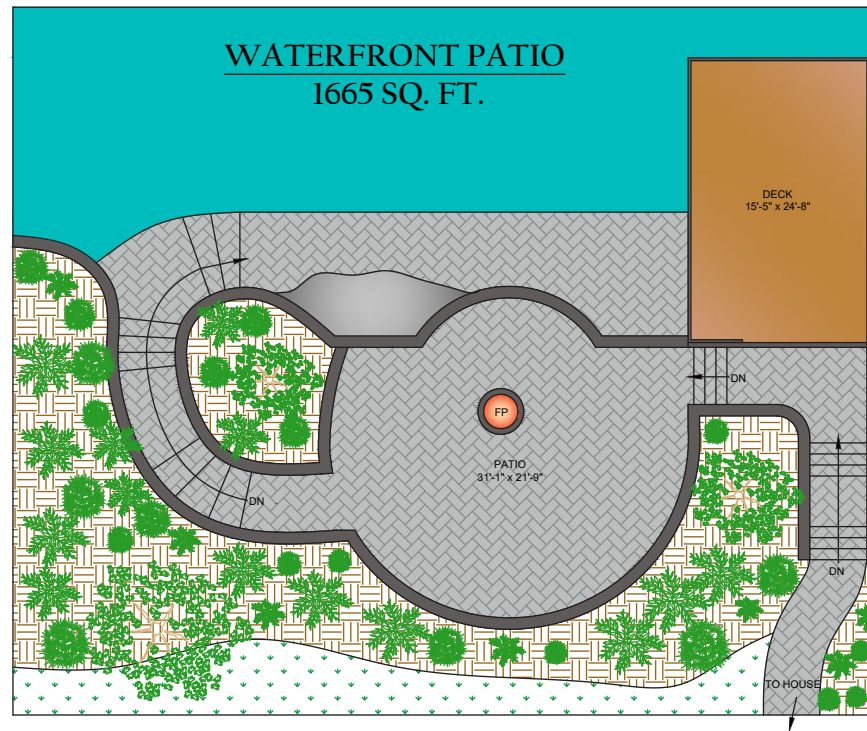


Property Floorplan

First 1,792 sq. ft.
 Second 1,665 sq. ft.

TOTAL AREA 3,560 sq. ft.

Garage 489 sq. ft.
 Deck/Patio 3,174 sq. ft.
 Carport 133 sq. ft.
 Office 103 sq. ft.



BOAT HOUSE
 426 SQ. FT.
 7' CEILING HEIGHT

NORTH



0' 5' 10'
 SCALE

* DIMENSIONS ARE FOR REFERENCE PURPOSES ONLY AND ARE NOT TAKEN FROM ORIGINAL BLUEPRINTS



Property Photos

EXTERIOR





Property Photos

KITCHEN





Property Photos

INTERIOR





Property Photos

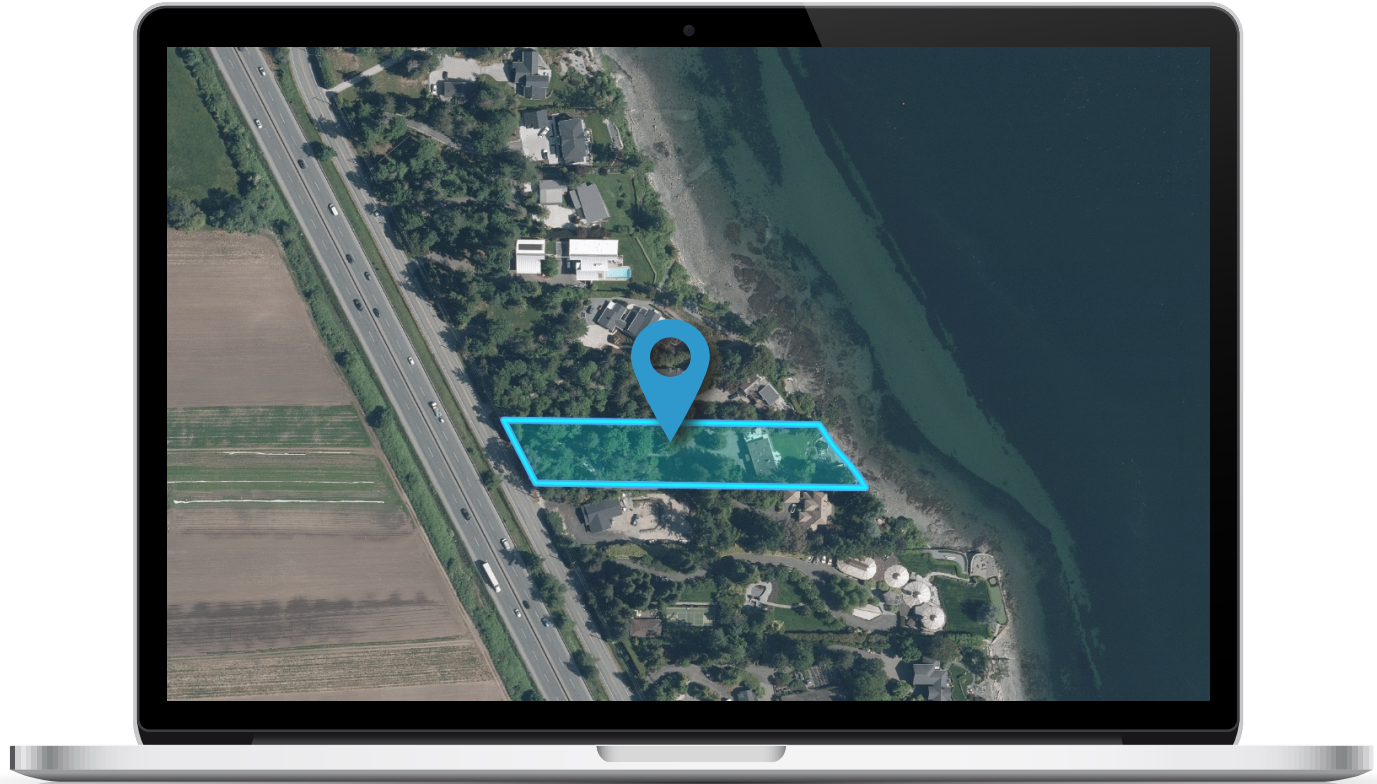
PRIMARY BEDROOM & ENSUITE





Location

(GIS) MAPPING





 **CHACE
WHITSON**
PERSONAL REAL ESTATE CORPORATION


Macdonald
Realty



CHACE WHITSON

PERSONAL REAL ESTATE CORPORATION

CEL · 250 818 9338 | TEL · 778 426 2262

Chace@ChaceWhitson.com | ChaceWhitson.com

2411 · Bevan Avenue Sidney, BC · V8L 4M9





**CHACE
WHITSON**
PERSONAL REAL ESTATE CORPORATION



Chace Whitson | 250.818.9338 | Chace@ChaceWhitson.com | ChaceWhitson.com