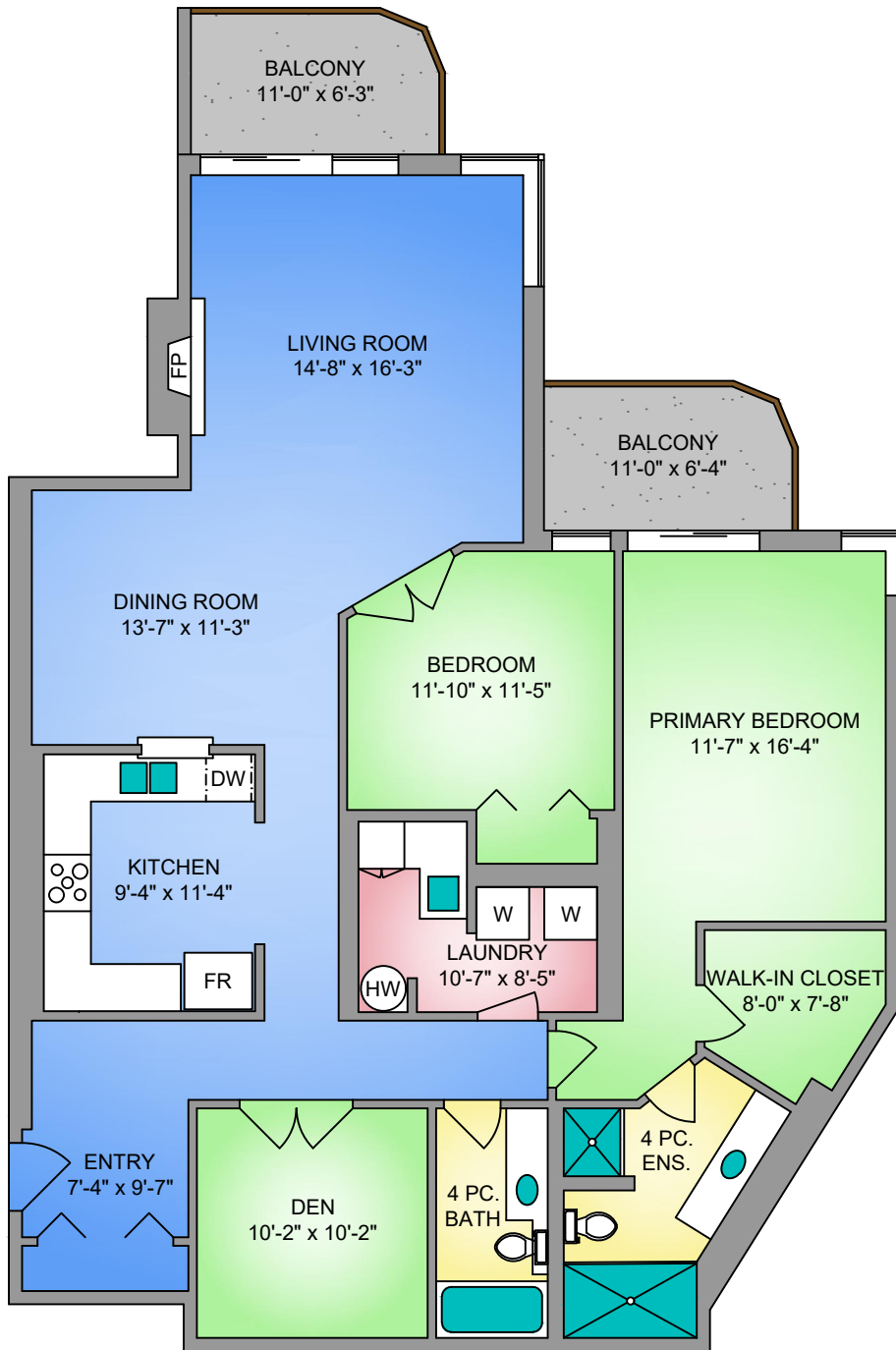


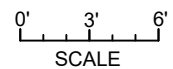
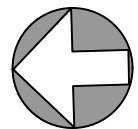
# UNIT 4D - 9851 SECOND STREET

1593 SQ. FT.

8'-0" CEILING HEIGHT



NORTH



250-884-9753  
 matt@propermeasure.com  
 www.propermeasure.com

UNIT 4D - 9851 SECOND STREET		
MAY 14, 2024		
PREPARED FOR THE EXCLUSIVE USE OF CHASE WHITSON PLANS MAY NOT BE 100% ACCURATE, IF CRITICAL BUYER TO VERIFY.		
FLOOR	AREA (SQ. FT.)	
	FINISHED	BALCONY
FOURTH	1593	142