

10953 CHALET

North Saanich





FOR SALE



10953 Chalet Road

North Saanich

SUMMARY OVERVIEW



LISTING PRICE: \$1,257,000



LIVING AREA: 1,778 sq. ft.



BEDROOMS: 3 + office



BATHROOMS: 3



Set among the quiet, tree-lined streets of Deep Cove – one of the Peninsula’s most desirable areas – sits a bright, 3-Bed, 3-Bath, 1778 sqft. home. With its tailored gardens, mature landscaping, and west-facing exposure, the home offers a welcoming look and feel. Beautiful windows, double French doors, and garden views bring the outside in for a seamless connection to its lush surroundings. Thoughtfully laid out, the home features a spacious kitchen, open-concept living and dining area, and main-floor primary suite, complete with a walk-in closet and 4-piece ensuite. The home is bright, airy, and full of natural light both upstairs and down. Outdoors offers a private, sun-drenched yard with east and west exposure and over 450 sqft. of patio. Enjoy all that rural living has to offer. Located in the heart of Deep Cove, close to schools, parks, trails, and beaches, and just a 15-minute drive to downtown Sidney.



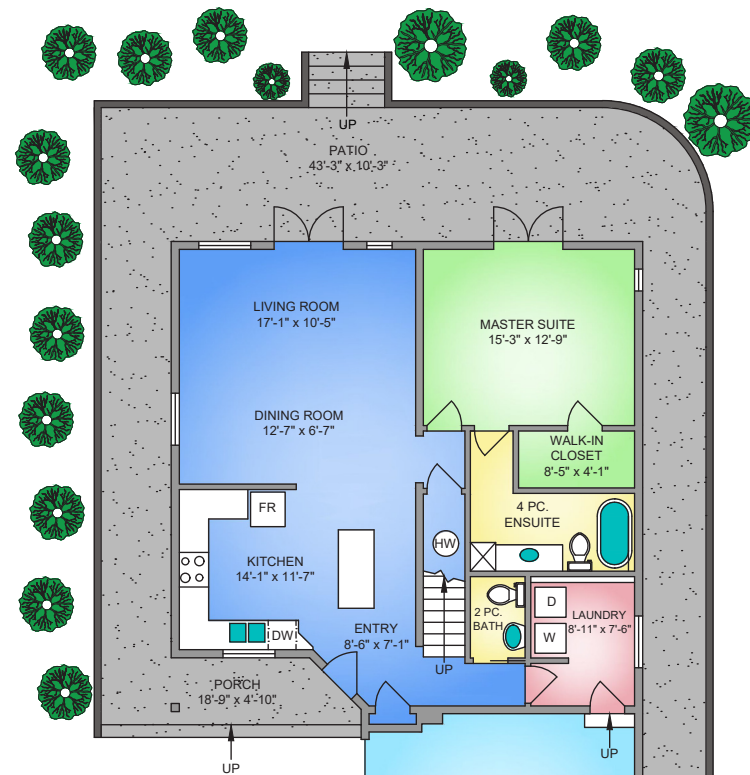
Property Floorplan

Main Floor 1,114 sq. ft.
Upper Floor 664 sq. ft.

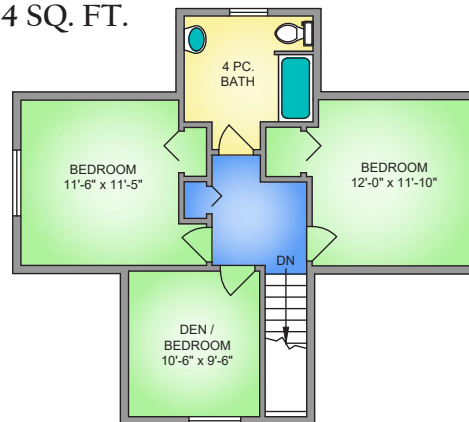
TOTAL AREA 1,778 sq. ft.

Garage 369 sq. ft.
Patio/Porch 494 sq. ft.

MAIN FLOOR
1114 SQ. FT.



UPPER FLOOR
664 SQ. FT.



NORTH



0' 5' 10'
SCALE

* DIMENSIONS ARE FOR REFERENCE PURPOSES ONLY AND ARE NOT TAKEN FROM ORIGINAL BLUEPRINTS



Property Photos

EXTERIOR





Property Photos

KITCHEN





Property Photos

INTERIOR





Property Photos

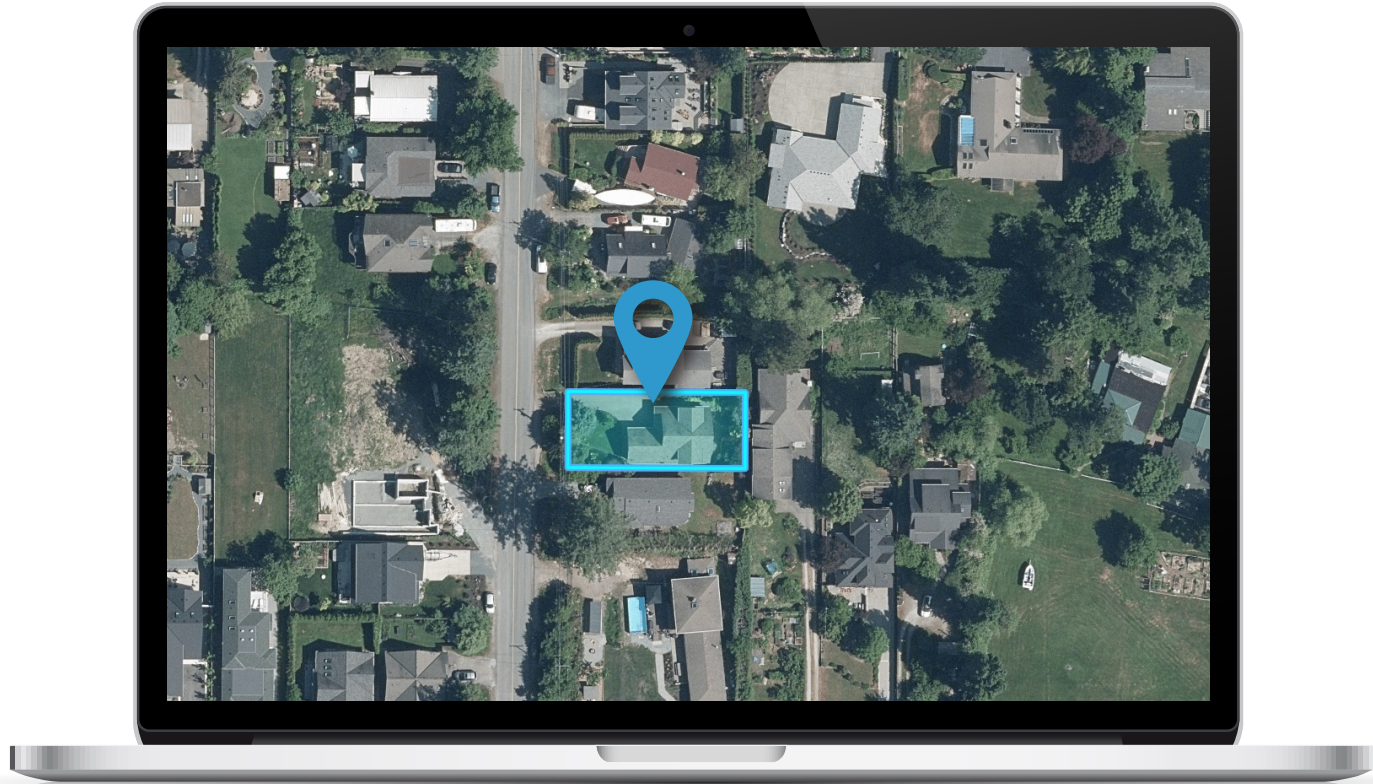
EXTERIOR





Location

(GIS) MAPPING





 **CHACE
WHITSON**
PERSONAL REAL ESTATE CORPORATION

 **Macdonald
Realty**



CEL · 250 818 9338 | TEL · 778 426 2262

Chace@ChaceWhitson.com | ChaceWhitson.com

2411 · Bevan Avenue Sidney, BC · V8L 4M9





**CHACE
WHITSON**
PERSONAL REAL ESTATE CORPORATION



Chace Whitson | 250.818.9338 | Chace@ChaceWhitson.com | ChaceWhitson.com