

1084 MAPLE

North Saanich





FOR SALE



1084 Maple Road

North Saanich

SUMMARY OVERVIEW



LISTING PRICE:

\$2,999,000 + GST



LIVING AREA:

5,377 sq. ft.



BEDROOMS:

6



BATHROOMS:

7

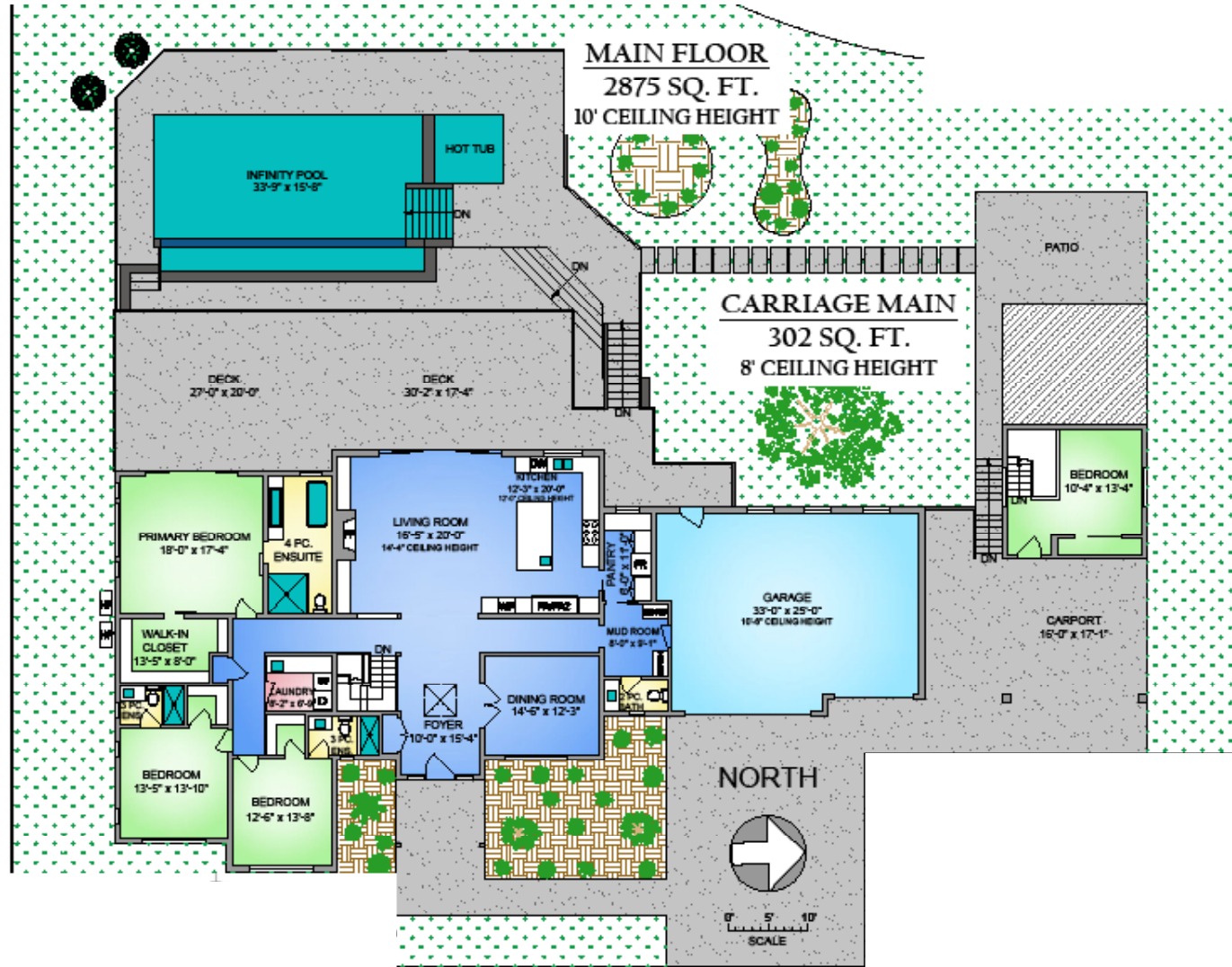


Designed for entertaining, inside and out, this 5377 sqft. estate offers a luxurious look with a laidback feel. Custom built in 2023, the property features a 4-bed, 6-bath, 4500-sqft. main house as well as a 2-Bed, 1-Bath carriage house, ideal for multi-generational living. 10-ft. ceilings, picture windows, and an open floor plan play into the home's Palm Springs design, perfectly blending mid-century modernism with effortless indoor-outdoor living. An open-concept kitchen and living area, marked by light wood tones and custom cabinetry, offer an aesthetic that's as impressive as it is functional. Enjoy a gas range, double ovens, and a full pantry, along with a bar area and beverage fridge. Pano-inspired patio doors connect the outdoors, offering another 2500 sqft. of entertaining space as well as a saltwater, infinity-edge pool. Located in beautiful Deep Cove, the home is just a 5-minute stroll from the local schools, parks, and market.



Property Floorplan

Main Floor	2,875 sq. ft.
Lower Floor	1,624 sq. ft.
TOTAL AREA	4,499 sq. ft.
Carriage Main	302 sq. ft.
Carriage Lower	576 sq. ft.
Total Carriage	878 sq. ft.
GRAND TOTAL	5,377 sq. ft.
Garage Carport	1,180 sq. ft.
Deck / Patio	2,593 sq. ft.

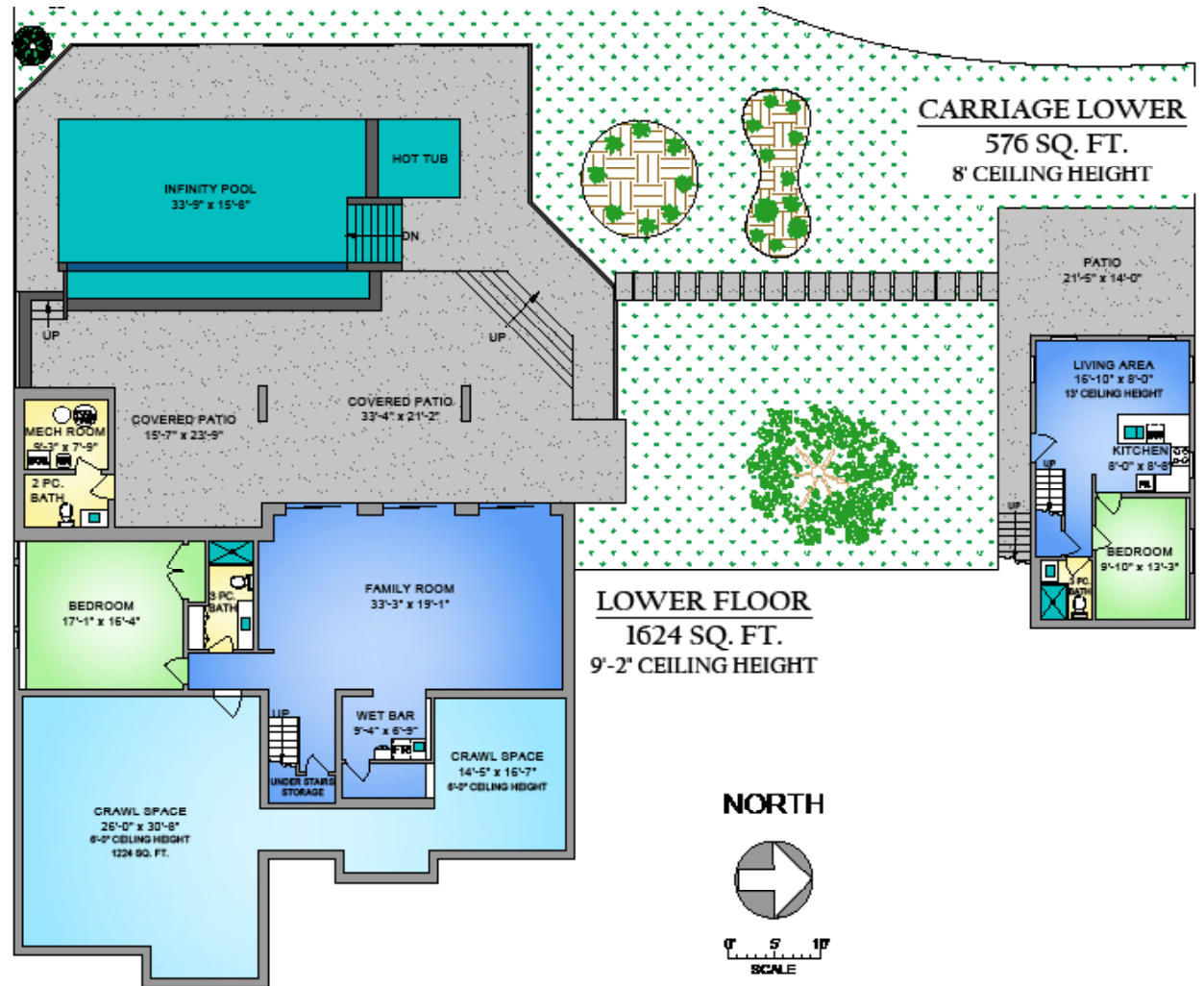


* DIMENSIONS ARE FOR REFERENCE PURPOSES ONLY AND ARE NOT TAKEN FROM ORIGINAL BLUEPRINTS



Property Floorplan

Main Floor	2,875 sq. ft.
Lower Floor	1,624 sq. ft.
TOTAL AREA	4,499 sq. ft.
Carriage Main	302 sq. ft.
Carriage Lower	576 sq. ft.
Total Carriage	878 sq. ft.
GRAND TOTAL	5,377 sq. ft.
Garage Carport	1,180 sq. ft.
Deck / Patio	2,593 sq. ft.



* DIMENSIONS ARE FOR REFERENCE PURPOSES ONLY AND ARE NOT TAKEN FROM ORIGINAL BLUEPRINTS



Property Photos

EXTERIOR





Property Photos

KITCHEN





Property Photos

INTERIOR





Property Photos

PRIMARY BEDROOM & ENSUITE





Property Photos

LOWER LEVEL





Property Photos

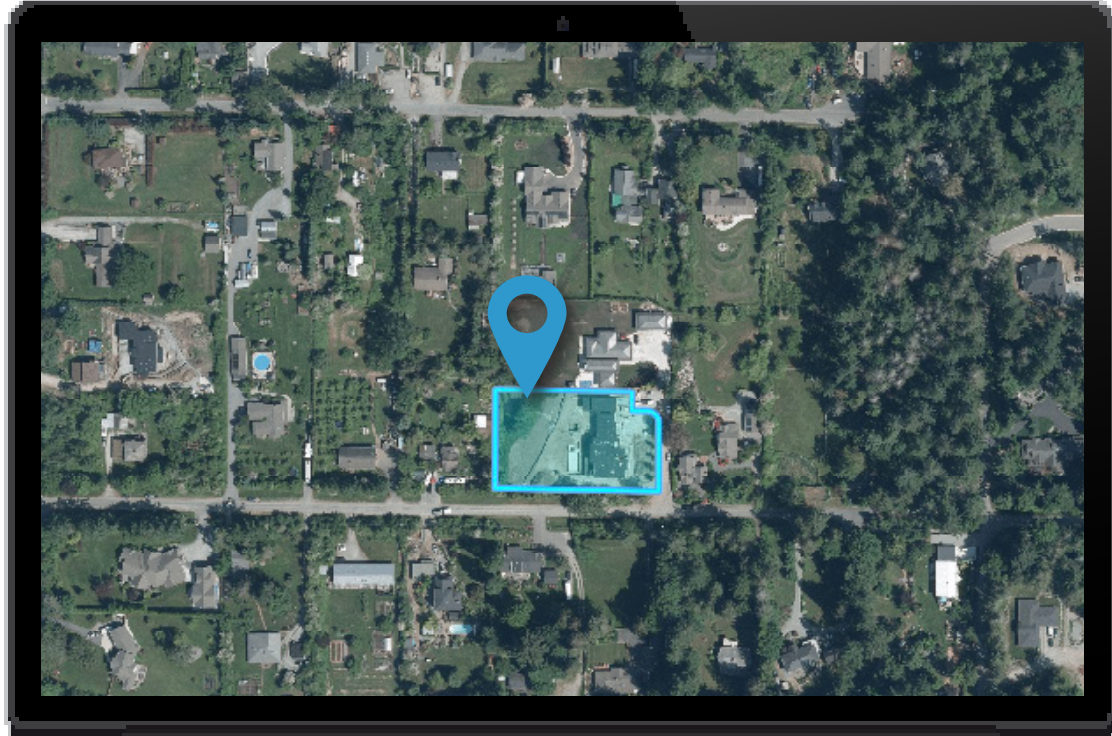
CARRIAGE HOME





Location

(GIS) MAPPING





 **CHACE
WHITSON**
PERSONAL REAL ESTATE CORPORATION


**Macdonald
Realty**



CEL · 250 818 9338 | TEL · 778 426 2262

Chace@ChaceWhitson.com | ChaceWhitson.com

2411 · Bevan Avenue Sidney, BC · V8L 4M9





**CHACE
WHITSON**
PERSONAL REAL ESTATE CORPORATION



Chace Whitson | 250.818.9338 | Chace@ChaceWhitson.com | ChaceWhitson.com