



# 10393 ALLBAY

Sidney







FOR SALE



**10393 Allbay Road**  
**Sidney**

SUMMARY OVERVIEW



LISTING PRICE:	\$1,999,000
----------------	-------------



LIVING AREA:	1,795 sq. ft.
--------------	---------------



BED:	4
------	---



BATH:	2
-------	---



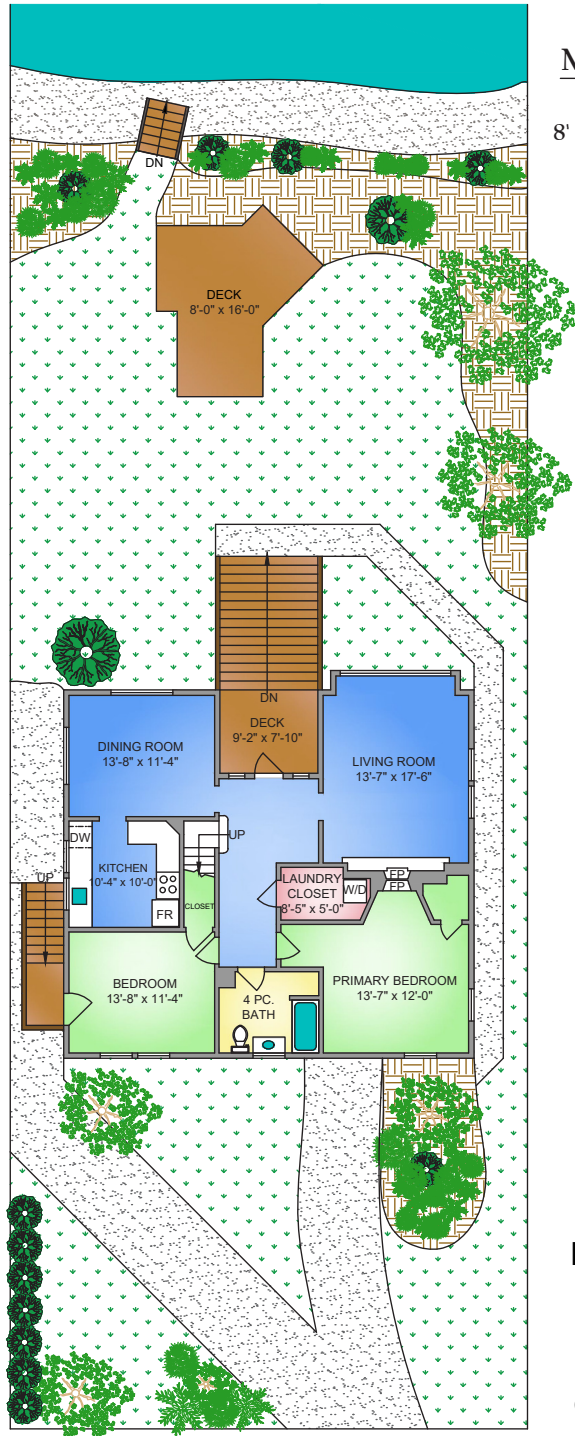


Perfectly positioned on the protected waters of Roberts Bay sits a rare opportunity – An 8276 square-foot lot with spanning views of the Pacific Ocean, Mount Baker, and breathtaking coastal landscape. From unparalleled views to sandy toes, this low-bank waterfront offers beach access, right from your own backyard. Surrounded by newly-built homes and on one of Sidney's most desirable streets, this property presents a blank canvas in a coveted location. Currently home to a charming, 1926 character-style cottage, the opportunity for a historic remodel or luxury new build is yours. At 51-feet wide by 162-feet deep, flat terrain, and residential zoning, this property is primed for potential. Located in the heart of Sidney, close to schools, parks, and amenities, it's coastal living at its finest. Your seaside escape awaits...



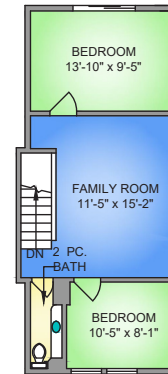
# Property Floorplan

Main Floor	1,274 sq. ft.
Upper Floor	521 sq. ft.
<b>TOTAL AREA</b>	<b>1,795 sq. ft.</b>
Patio/Deck	248 sq. ft.
Unfinished	1,324 sq. ft.
Lot Size	8,003 sq. ft.

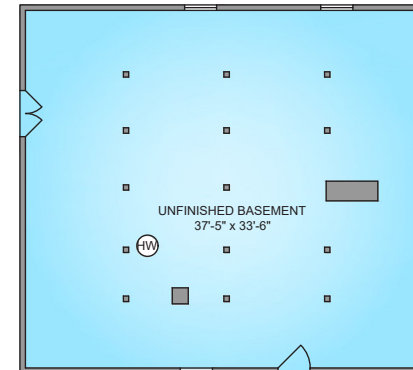


**MAIN FLOOR**  
1274 SQ. FT.  
8' CEILING HEIGHT

**UPPER FLOOR**  
521 SQ. FT.  
8'-10" VAULTED CEILING



**LOWER FLOOR**  
1324 SQ. FT.  
7' CEILING HEIGHT



NORTH



0' 5' 10'  
SCALE





## Property Photos

EXTERIOR







## Property Photos

INTERIOR







# Property Photos

EXTERIOR







## Property Photos

---

PROPERTY  
VIEWS







## Location

(GIS) MAPPING











CEL • 250 818 9338 | TEL • 778 426 2262

[Chace@ChaceWhitson.com](mailto:Chace@ChaceWhitson.com) | [ChaceWhitson.com](http://ChaceWhitson.com)

2411 • Bevan Avenue Sidney, BC • V8L 4M9





Chace Whitson | 250.818.9338 | [Chace@ChaceWhitson.com](mailto:Chace@ChaceWhitson.com) | [ChaceWhitson.com](http://ChaceWhitson.com)