



4623 CORDOVA BAY

Saanich





FOR SALE



4623 Cordova Bay Road

Saanich

SUMMARY OVERVIEW



LISTING PRICE:

\$2,350,000 + GST



LIVING AREA:

2,643 sq. ft.



BEDROOMS:

3



BATHROOMS:

3



Impeccably designed and thoughtfully finished, this 3 bed/bath home offers 2643 sq.ft of living space with 9'-12' ceilings, oceans views, and an ideal location in Cordova Bay. Excellent floor plan with a warm and inviting feel throughout, spacious rooms, bright office, and a large functional laundry/mudroom off the garage. Stunning kitchen featuring custom floor-to-ceiling cabinetry, premium appliances, walk-in pantry, Dekton countertops, and ample storage. The primary suite features vaulted ceilings, a spacious ensuite with tiled walk-in shower, and a large closet with custom organizers. Family friendly floor plan with two additional bedrooms on the second floor, refreshment area, and stunning tiered rooftop patios offer sweeping ocean views and expand your living space. Outside you will find a fantastic patio, covered bbq area, tree-line easy maintenance yard, and large garage. This is the perfect home for a busy family, executive household, or retirees seeking a convenient location in a desirable neighbourhood. Walking distance to Mt Doug Regional Park and a short drive to Uptown Shopping Centre, Downtown Victoria, or Sidney by the Sea. Heat pump, fully landscaped, excellent school catchment, and 2-5-10 New Home Warranty. Professionally designed inside and out, this is a magazine-worthy home that is sure to impress.



Property Floorplan

Main Floor 1,421 sq. ft.
Upper Floor 1,222 sq. ft.

TOTAL AREA 2,643 sq. ft.

Garage 595 sq. ft.
Patio/Balcony 903 sq. ft.



* DIMENSIONS ARE FOR REFERENCE PURPOSES ONLY AND ARE NOT TAKEN FROM ORIGINAL BLUEPRINTS

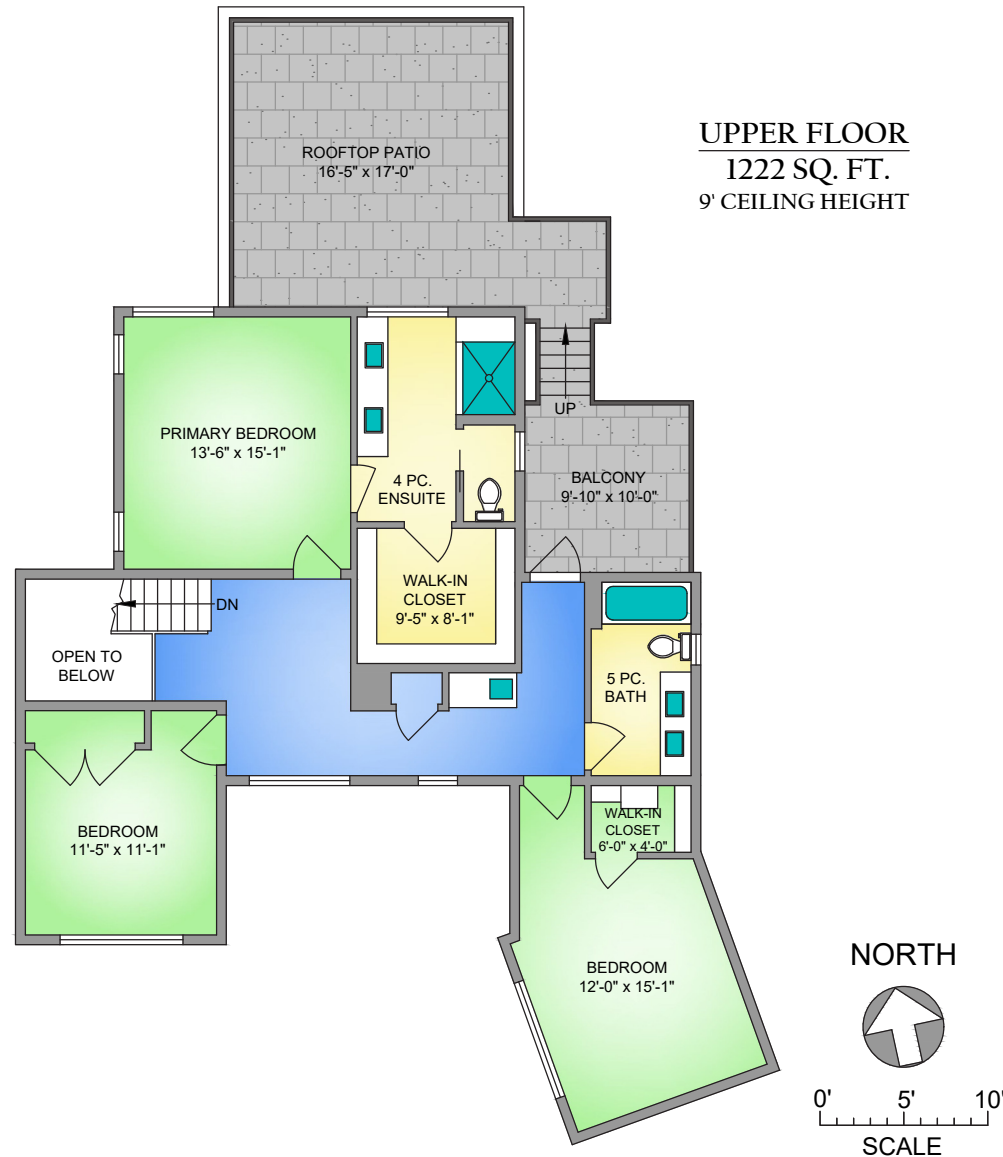


Property Floorplan

Main Floor 1,421 sq. ft.
Upper Floor 1,222 sq. ft.

TOTAL AREA 2,643 sq. ft.

Garage 595 sq. ft.
Patio/Balcony 903 sq. ft.



* DIMENSIONS ARE FOR REFERENCE PURPOSES ONLY AND ARE NOT TAKEN FROM ORIGINAL BLUEPRINTS



Property Photos

EXTERIOR





Property Photos

INTERIOR





Property Photos

KITCHEN





Property Photos

PRIMARY BEDROOM
& ENSUITE





Property Photos

EXTERIOR





Location

(GIS) MAPPING





 **CHACE
WHITSON**
PERSONAL REAL ESTATE CORPORATION

 **Macdonald
Realty**



CEL • 250 818 9338 | TEL • 778 426 2262

Chace@ChaceWhitson.com | ChaceWhitson.com

2411 • Bevan Avenue Sidney, BC • V8L 4M9





**CHACE
WHITSON**
PERSONAL REAL ESTATE CORPORATION



Chace Whitson | 250.818.9338 | Chace@ChaceWhitson.com | ChaceWhitson.com