



10861 GREENPARK

North Saanich





FOR SALE



10861 Greenpark Drive

North Saanich

SUMMARY OVERVIEW



LISTING PRICE:

\$2,100,000



LIVING AREA:

2,747 sq. ft.



BEDROOMS:

3



BATHROOMS:

3



Set among the coveted homes of Green Park sits a stunning 3-Bed, 3-Bath, 2747 sqft. home. Custom built in 2021 by award-winning, GT Mann, the home offers luxurious single-story living. Open-concept, with 10-ft. ceilings, expansive windows, and southern exposure, the home perfectly balances its elegance with the natural beauty that surrounds it. A timeless kitchen with a gas cooktop, double ovens, and a full walk-in pantry, connects to the open dining and living areas, complete with coffered ceilings, a marble-surround fireplace, and flush-mount speakers. A thoughtful layout places the primary suite, along with its walk-in closet and lux ensuite, on one side of the home and the additional two bedrooms on the other. High-end finishes continue throughout the laundry and mud rooms and in the 500-sqft. bonus space above the garage. Backing onto Horth Hill, the back garden offers treelined views, a covered patio, sauna, and hot tub, making the most of its pristine location.

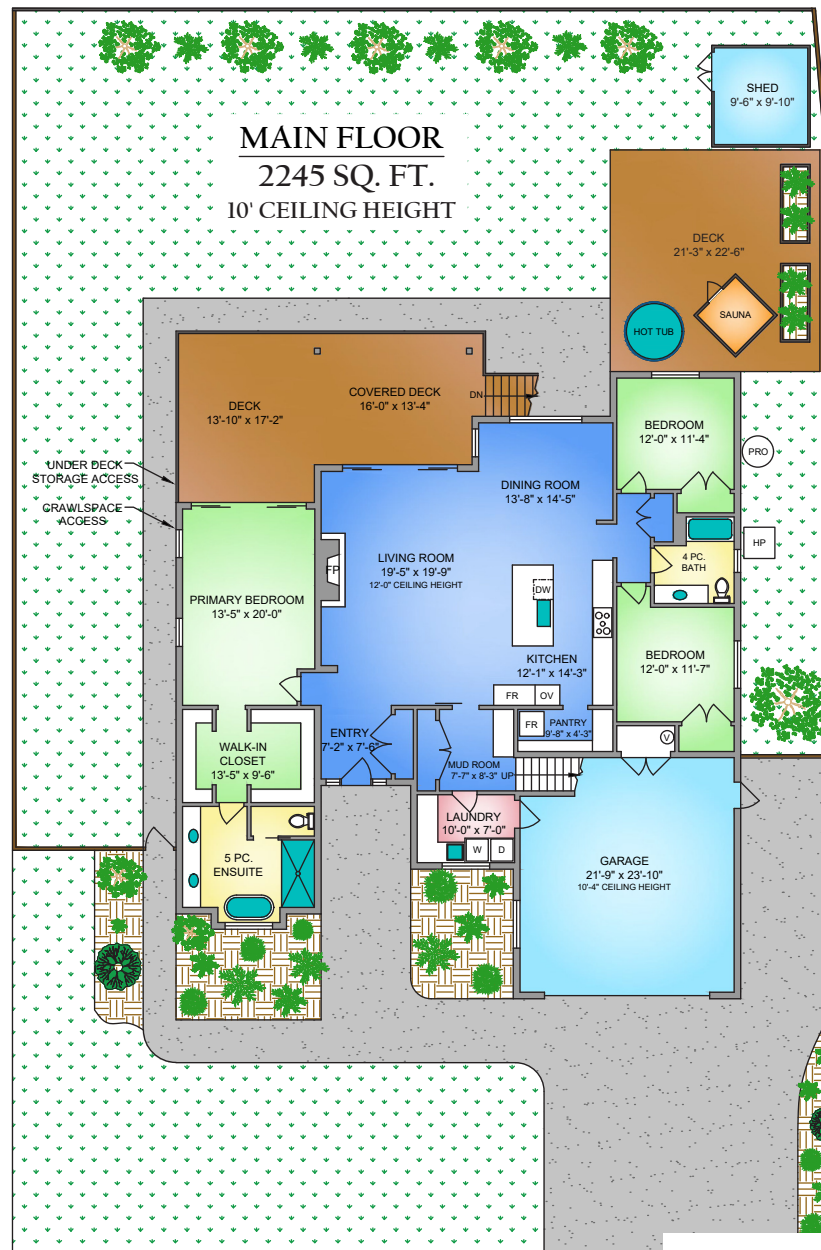


Property Floorplan

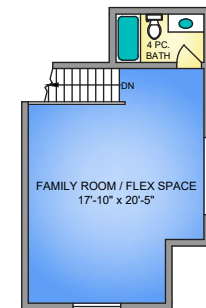
Main Floor 2,245 sq. ft.
Upper Floor 502 sq. ft.

TOTAL AREA 2,747 sq. ft.

Garage 553 sq. ft.
Deck 940 sq. ft.



UPPER FLOOR
502 SQ. FT.
8' VAULTED CEILING



NORTH



0' 5' 10'
SCALE

* DIMENSIONS ARE FOR REFERENCE PURPOSES ONLY AND ARE NOT TAKEN FROM ORIGINAL BLUEPRINTS



Property Photos

EXTERIOR





Property Photos

INTERIOR





Property Photos

KITCHEN





Property Photos

PRIMARY BEDROOM
& ENSUITE





Property Photos

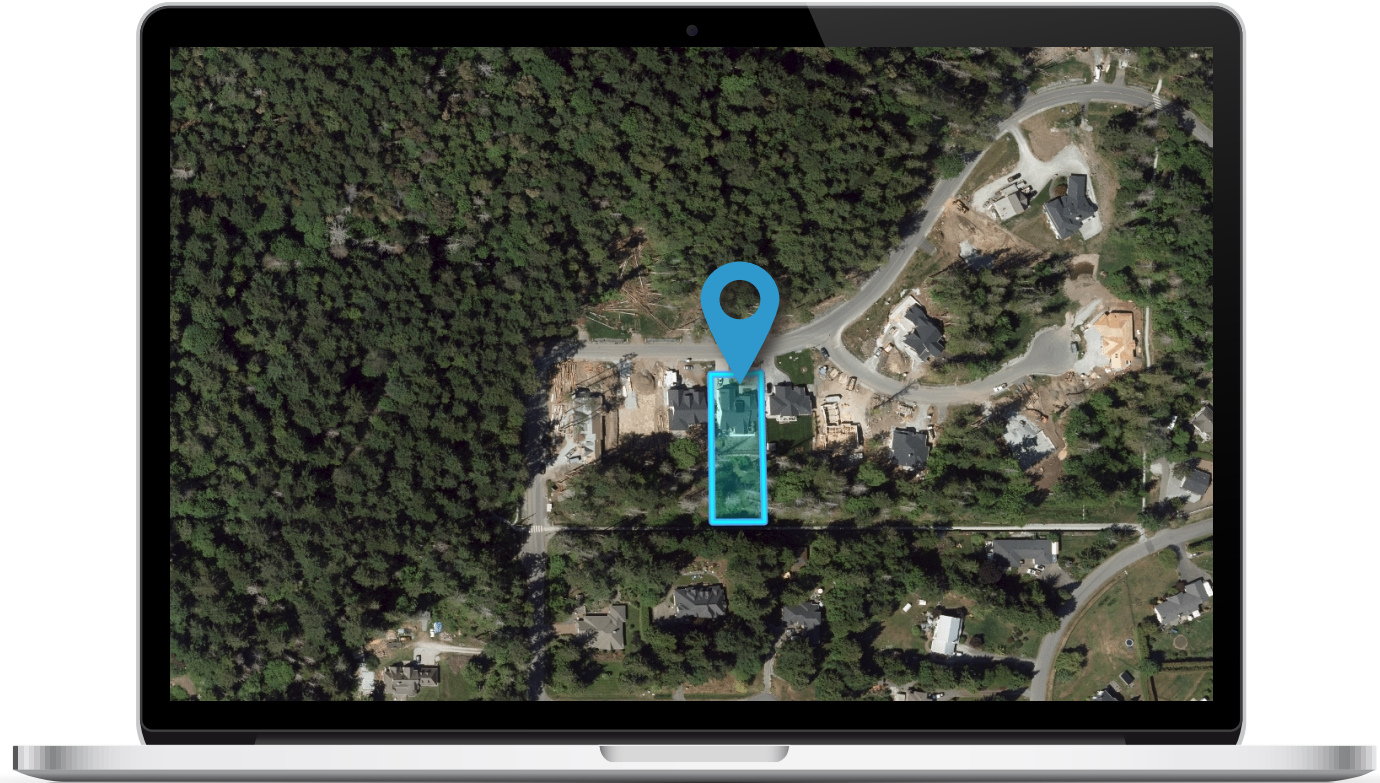
EXTERIOR





Location

(GIS) MAPPING







CEL • 250 818 9338 | TEL • 778 426 2262

Chace@ChaceWhitson.com | ChaceWhitson.com

2411 • Bevan Avenue Sidney, BC • V8L 4M9





Chace Whitson | 250.818.9338 | Chace@ChaceWhitson.com | ChaceWhitson.com