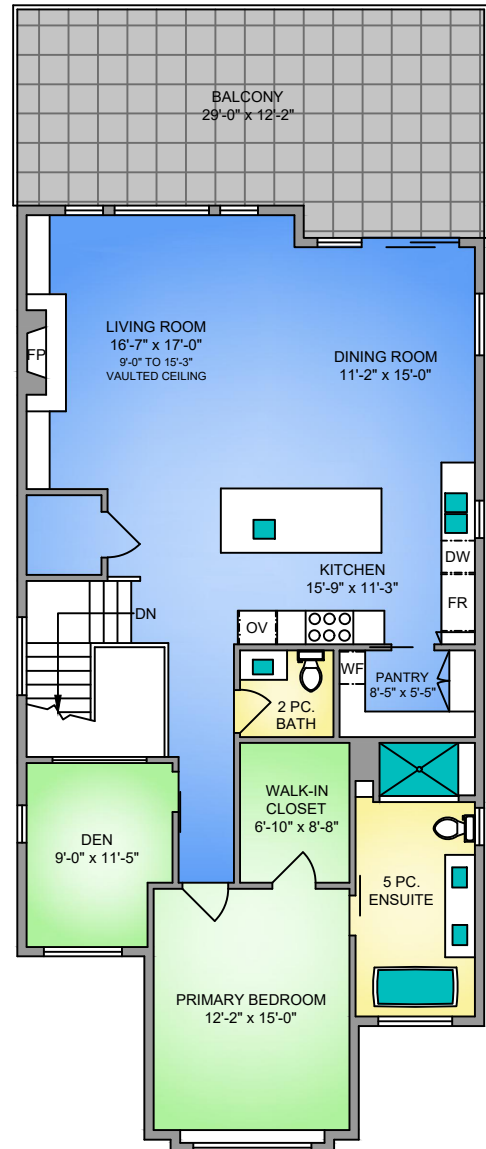
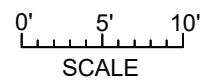
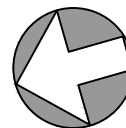


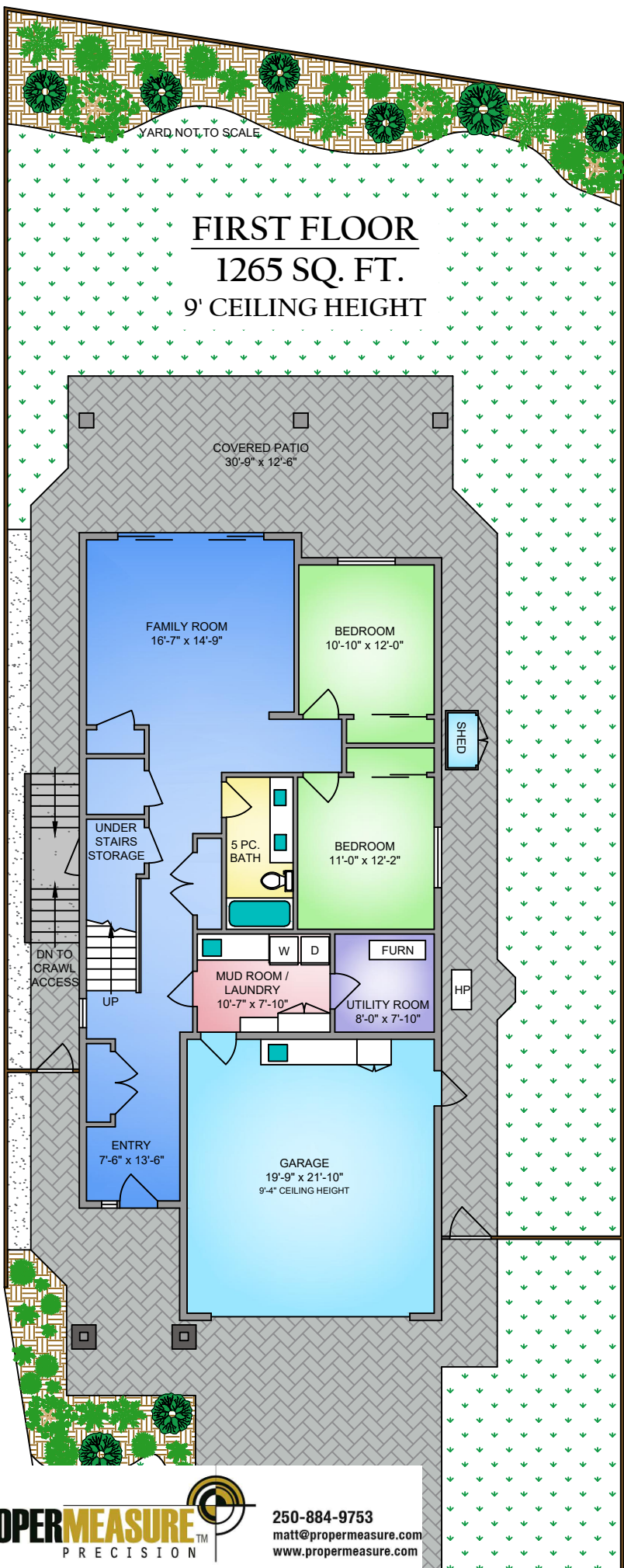
**SECOND FLOOR**  
**1518 SQ. FT.**  
**9' CEILING HEIGHT**



**NORTH**



9293 BAKERVIEW CLOSE			
AUGUST 08, 2023			
PREPARED FOR THE EXCLUSIVE USE OF CHACE WHITSON			
PLANS MAY NOT BE 100% ACCURATE, IF CRITICAL BUYER TO VERIFY.			
FLOOR	AREA (SQ. FT.)		
	FINISHED	GARAGE	BALC. / PATIO
FIRST	1265	462	408
SECOND	1518	-	375
<b>TOTAL</b>	<b>2783</b>	<b>462</b>	<b>783</b>



**FIRST FLOOR**  
**1265 SQ. FT.**  
**9' CEILING HEIGHT**

YARD, NOT TO SCALE