



9293 BAKERVIEW CL

North Saanich





9293 Bakerview Close

North Saanich

SUMMARY OVERVIEW



LISTING PRICE:

\$1,790,000



LIVING AREA:

2,783 sq. ft.



BEDROOMS:

3 + Den



BATHROOMS:

3



Welcome to Bakerview – A collection of oceanfront, coastal homes crafted by award-winning Citta Construction. With one premier water-view home available, now is your opportunity to embrace seaside living. Enjoy stunning ocean views in this 3-Bed/3-Bath, 2783-sq.ft. home. With a luxury interior package, the home offers custom cabinetry, quartz counters, and premium appliances throughout. Your kitchen, built to host, comes with an entertainer's island, 6-burner gas cooktop, pot filler, and full pantry. 15-ft vaulted ceilings mark the open-concept dining and living areas, with views from every angle. Down the hall, you'll find your primary suit, complete with a walk-in closet and spa-like ensuite. The lower level offers a second family room with French doors to the fully-fenced yard, as well as two additional bedrooms, a 5-piece bath, and a spacious laundry/mud room. Located steps from beautiful beaches and parks and just minutes from the Town of Sidney.

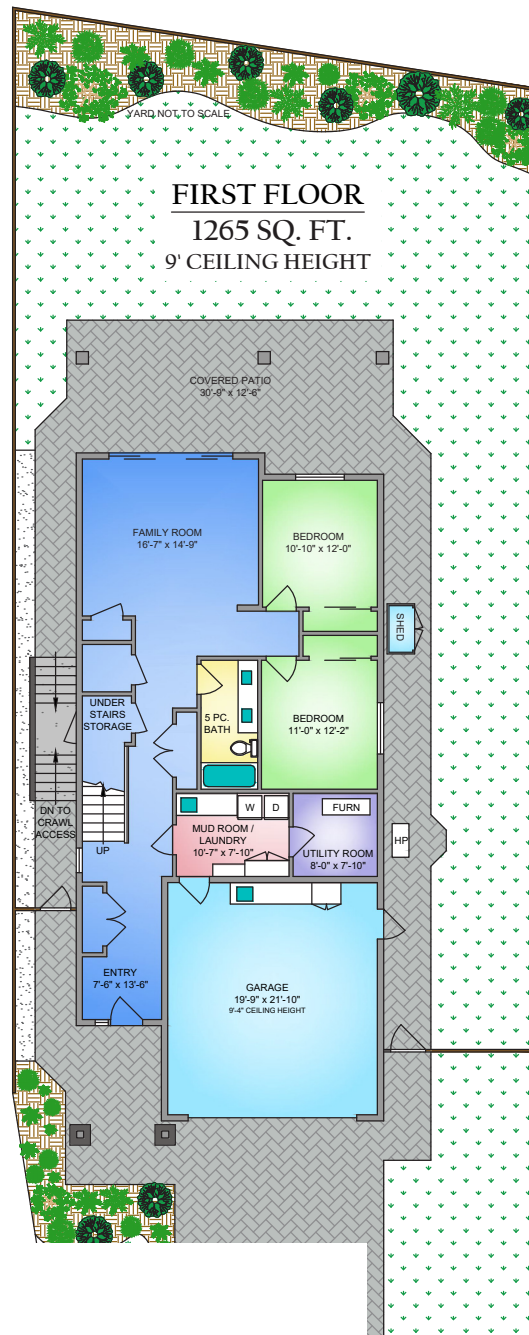


Property Floorplan

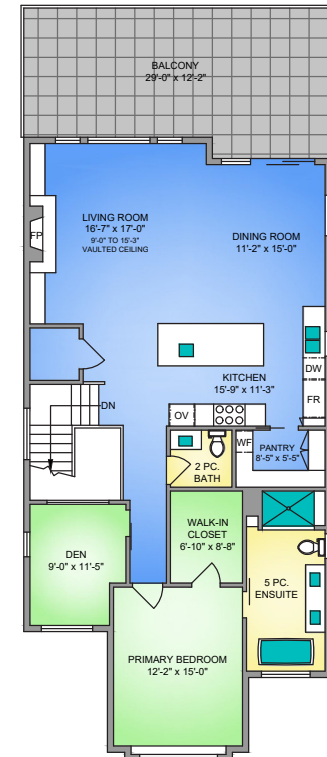
First Floor 1,265 sq. ft.
Second Floor 1,518 sq. ft.

MAIN FLOOR 2,783 sq. ft.

Garage 462 sq. ft.
Balcony/Patio 783 sq. ft.



SECOND FLOOR 1518 SQ. FT. 9' CEILING HEIGHT



NORTH



0' 5' 10'
SCALE

* DIMENSIONS ARE FOR REFERENCE PURPOSES ONLY AND ARE NOT TAKEN FROM ORIGINAL BLUEPRINTS



Property Photos

EXTERIOR





Property Photos

KITCHEN





Property Photos

INTERIOR





Property Photos

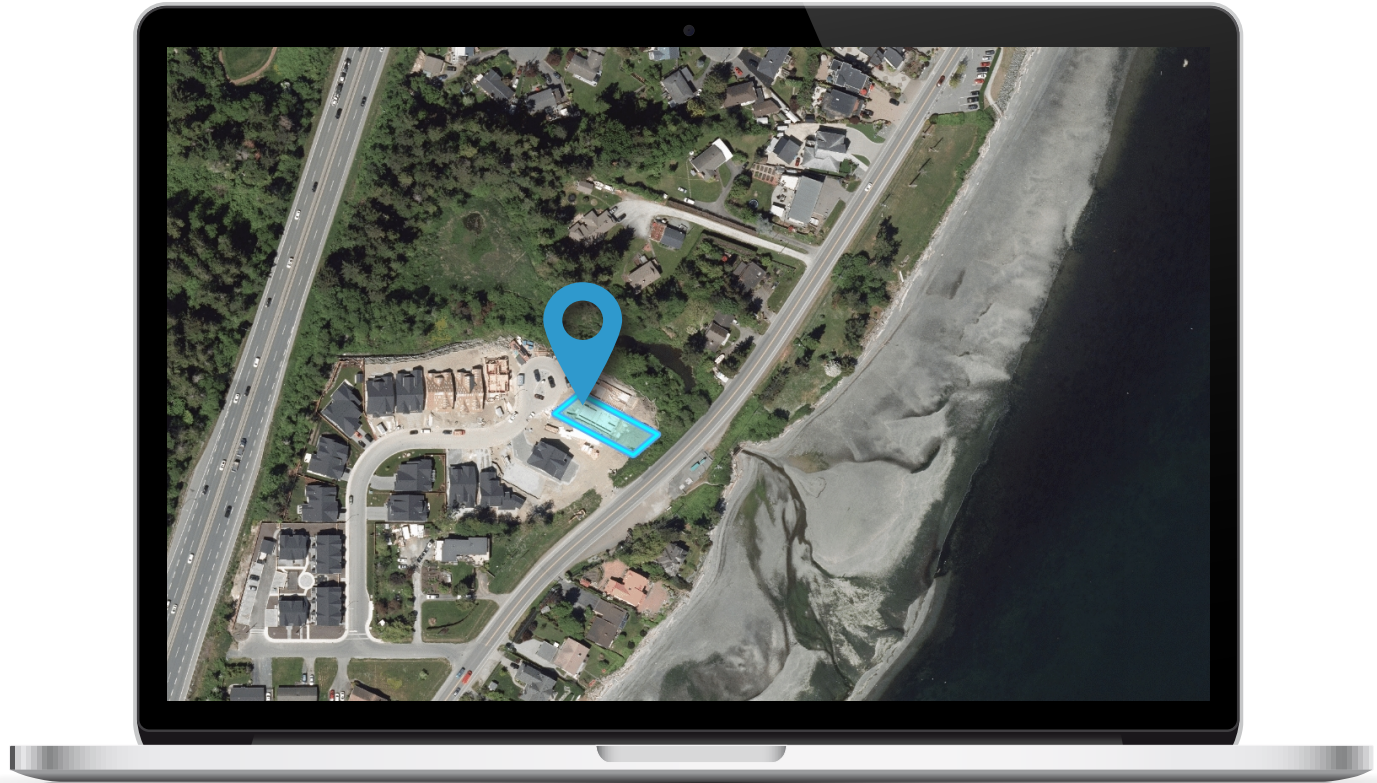
PRIMARY BEDROOM
& ENSUITE





Location

(GIS) MAPPING





**CHACE
WHITSON**
PERSONAL REAL ESTATE CORPORATION



**Macdonald
Realty**



CEL • 250 818 9338 | TEL • 778 426 2262

Chace@ChaceWhitson.com | ChaceWhitson.com

2411 • Bevan Avenue Sidney, BC • V8L 4M9





**CHACE
WHITSON**
PERSONAL REAL ESTATE CORPORATION



Chace Whitson | 250.818.9338 | Chace@ChaceWhitson.com | ChaceWhitson.com