



10950 GREENPARK

North Saanich





10950 Greenpark Drive

Horth Hill, North Saanich

SUMMARY OVERVIEW



LISTING PRICE:

\$2,368,000 + GST



LIVING AREA:

3,666 sq. ft.



BEDROOMS:

5



BATHROOMS:

6

*PROPERTY DETAILS SUBJECT TO CHANGE



Welcome to 10950 Greenpark! Located in one of North Saanich's most sought-after areas sits a stunning 5-Bed, 6-Bath, 3667-sq.ft. home. Custom-built, with soaring ceilings, expansive windows, and featured wainscotting, the home perfectly balances its elegance with the natural beauty that surrounds it. A gourmet kitchen, with integrated Fisher & Paykel appliances, an oversized island, and walk-in pantry, seamlessly connects to the dining and living areas, where 20-ft vaulted ceilings define the space, offering a grand feeling throughout. Thoughtfully designed, the home features a spacious great room, main-floor office, and a combined mudroom and laundry space off the garage. 4/5 bedrooms are on the second floor, including a lux primary suite, with a walk-in closet and spa-inspired ensuite, as well as a rec room and self-contained, 1-Bed/1-Bath suite. Located in the heart of North Saanich, close to beaches, parks, and trails, and just minutes from local schools, markets, and shops.



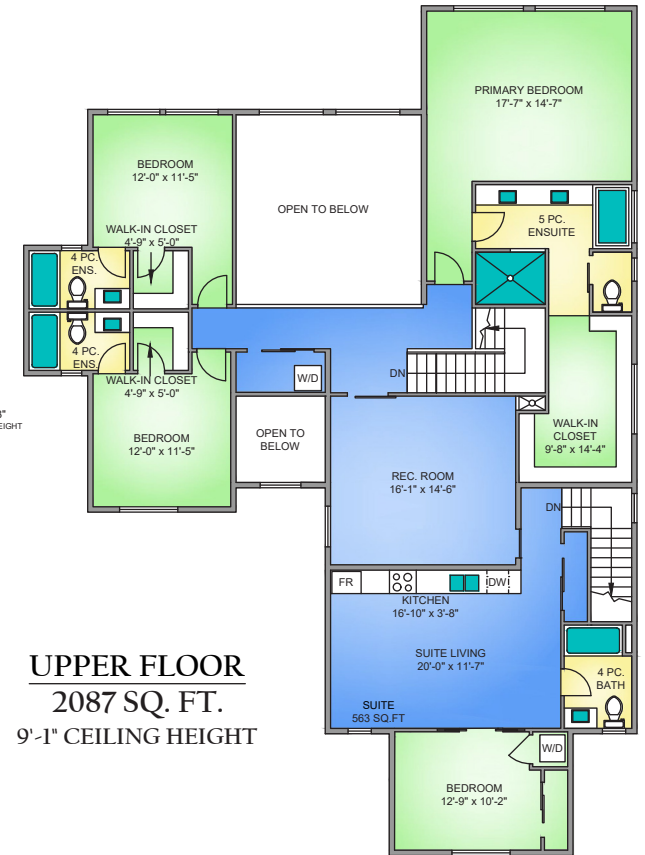
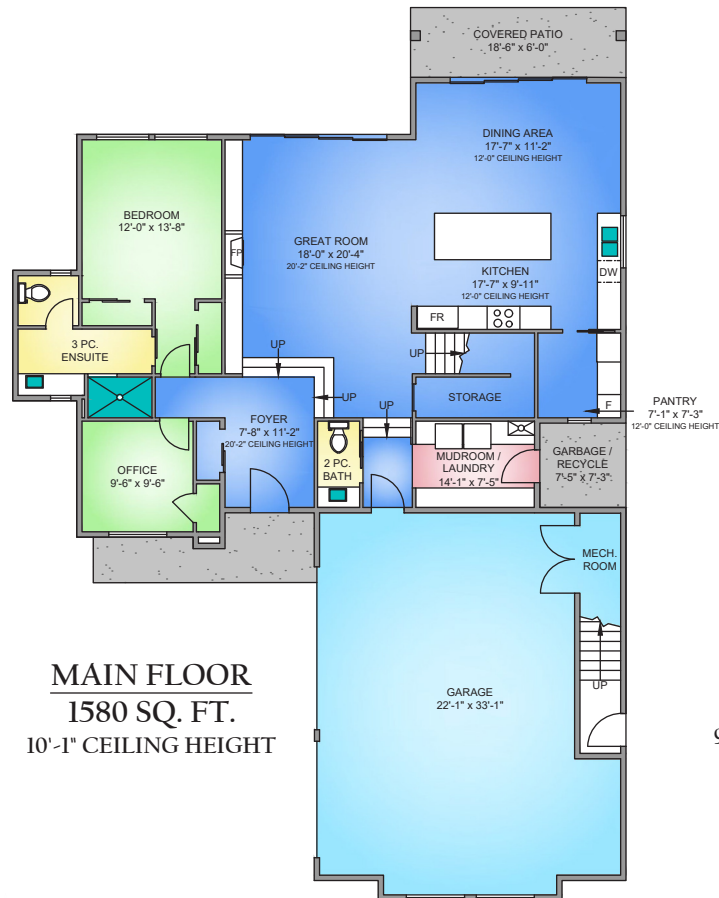
Property Floorplan

Main Floor 1,580 sq. ft.
Upper Floor 2,087 sq. ft.

TOTAL AREA 3,667 sq. ft.

Garage 886 sq. ft.
Deck/Patio 110 sq. ft.

Lot Size 0.56 acres



NORTH



0' 5' 10'
SCALE

* DIMENSIONS ARE FOR REFERENCE PURPOSES ONLY AND ARE NOT TAKEN FROM ORIGINAL BLUEPRINTS



Property Photos

EXTERIOR



* RENDERINGS ARE FOR ILLUSTRATION PURPOSES ONLY AND ARE SUBJECT TO CHANGE AT THE DEVELOPER'S DISCRETION



Features & Finishes

INTERIOR LIVING SPACE

- Modern Transitional Design
- Light colour scheme with featured wainscotting
- Wide-plank engineered hardwood flooring
- 18' Vaulted ceilings in main living area
- Linear propane fireplace with tile surround
- Double-glazed windows
- Discrete recessed pot lights
- Master bedroom walk-in closet

SPA-INSPIRED BATHROOMS

- Frameless glass en-suite shower with tiled niche
- Rainshower head with separate handheld
- Separate oversized soaker tub
- Bench seating
- Schluter entry shower
- In-floor radiant heating
- Quartz vanity countertops
- Shaker soft-close cabinetry
- Automatic under-mount motion lighting
- Single-lever black faucets and double sinks
- Tile flooring
- Water-efficient comfort height toilet with soft-close seat

GOURMET KITCHEN

- Shaker-style cabinetry millwork with soft close doors
- Quartz countertops and oversized island
- Quartz backsplash
- Stainless steel undermount sink
- Recessed under-cabinet task lighting
- Pantry storage area
- Gourmet stainless steel appliances including:
 - ✔ *Fisher & Paykel® 30" Integrated Column Refrigerator*
 - ✔ *Fisher & Paykel® 24" Integrated Column Freezer*
 - ✔ *Fisher & Paykel® Integrated Dishwasher*
 - ✔ *Fisher & Paykel® 36" Wall-Mount Chimney Ventilation Hoodfan*
 - ✔ *Fisher & Paykel® 36" Single Oven Gas Range*

ADDITIONAL CONVENIENCE

- Electric heat pump with air-conditioning
- Laundry rough-in on the second floor
- Three car garage with EV rough-in
- Covered patio
- Outdoor gas connection for heater and BBQ
- Outdoor water connections and electrical outlets

QUALITY CONSTRUCTION

- Homecare Program, Traveler's 2-5-10 new home warranty:
 - ✔ *2 years material and labour*
 - ✔ *5 year building envelope*
 - ✔ *10 year structural*



Appliance Specifications



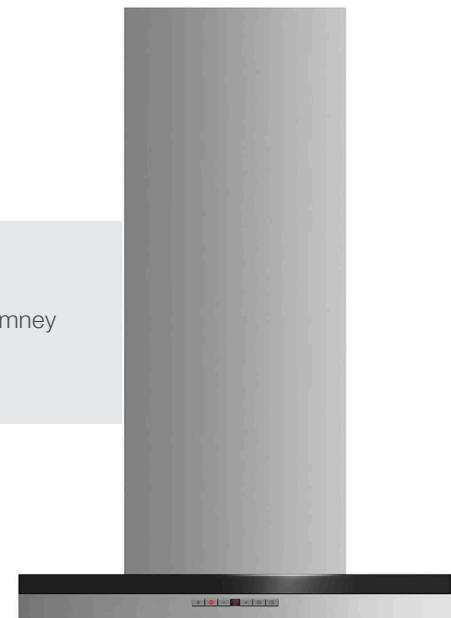
Appliance Specifications

KITCHEN



Fisher & Paykel: 36" Single Oven Gas Range

Fisher & Paykel: 36 inch 600 CFM Wall-Mount Chimney
Ventilation Hoodfan



FEATURES AND FINISHINGS ARE SUBJECT TO CHANGE AT THE DEVELOPER'S DISCRETION

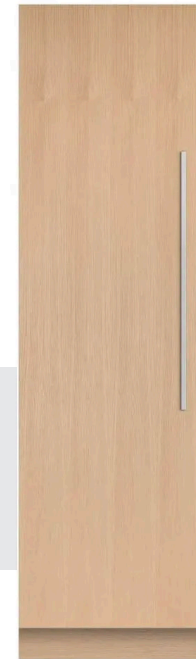


Appliance Specifications

KITCHEN



Fisher Paykel: 30" Integrated Column Refrigerator



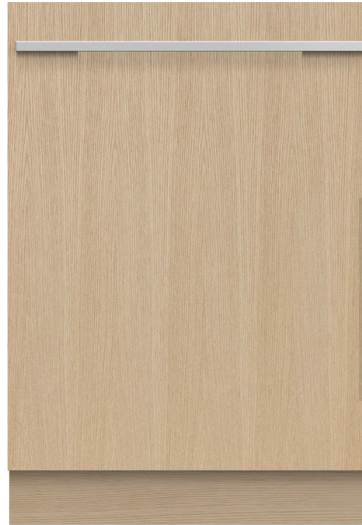
Fisher Paykel: 24" Integrated Column Freezer

FEATURES AND FINISHINGS ARE SUBJECT TO CHANGE AT THE DEVELOPER'S DISCRETION



Appliance Specifications

KITCHEN



Fisher Paykel: Integrated Dishwasher, Tall, Sanitize

FEATURES AND FINISHINGS ARE SUBJECT TO CHANGE AT THE DEVELOPER'S DISCRETION



Appliance Specifications

LAUNDRY



Samsung: 5.2 cu. Ft Front Load Washer



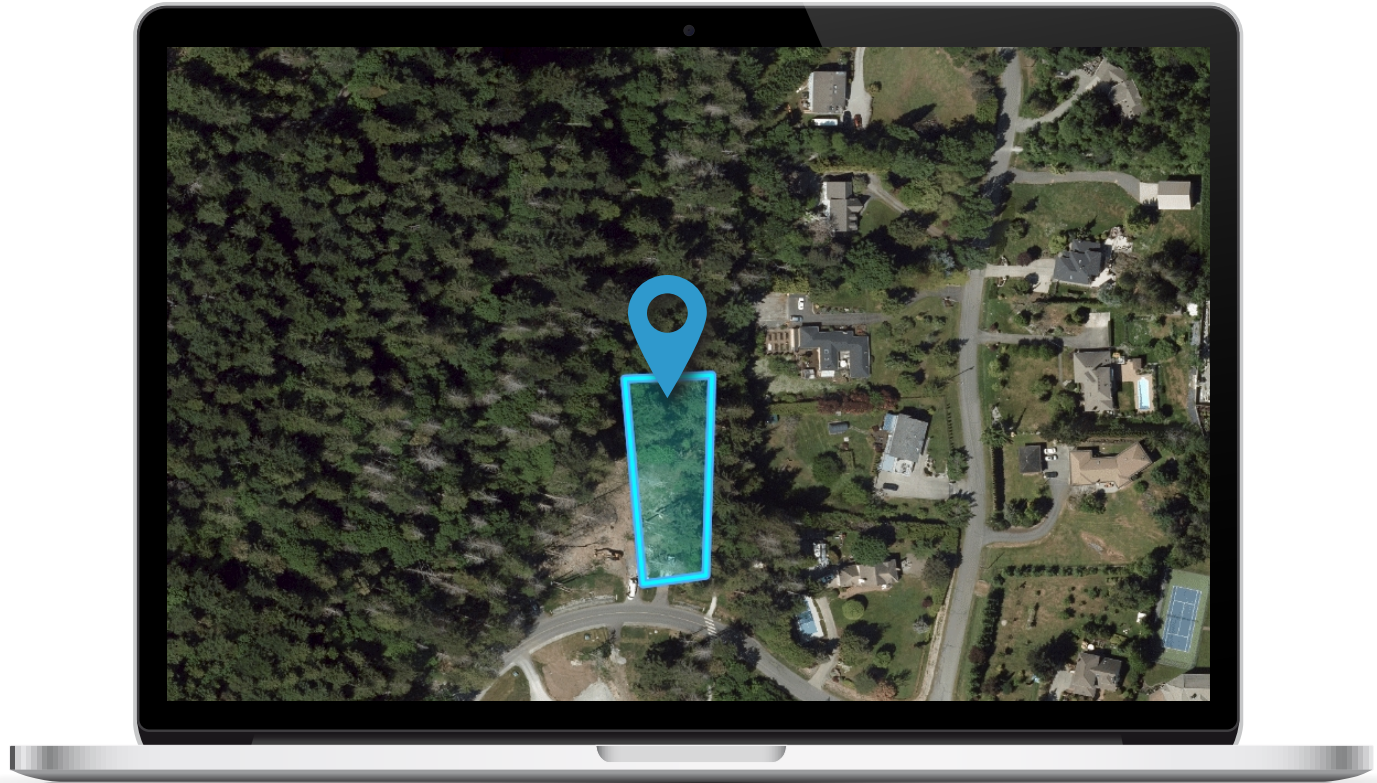
Samsung: 7.5 cu. Ft Electric Dryer

FEATURES AND FINISHINGS ARE SUBJECT TO CHANGE AT THE DEVELOPER'S DISCRETION



Location

(GIS) MAPPING





**CHACE
WHITSON**
PERSONAL REAL ESTATE CORPORATION



**Macdonald
Realty**



CEL • 250 818 9338 | TEL • 778 426 2262

Chace@ChaceWhitson.com | ChaceWhitson.com

2411 • Bevan Avenue Sidney, BC • V8L 4M9





**CHACE
WHITSON**
PERSONAL REAL ESTATE CORPORATION



Chace Whitson | 250.818.9338 | Chace@ChaceWhitson.com | ChaceWhitson.com