



# 10880 GREENPARK DRIVE

North Saanich





FOR SALE



# 10880 Greenpark Drive

## North Saanich

SUMMARY OVERVIEW



LISTING PRICE:

\$650,000 + GST



LOT AREA:

21,518 sq. ft. | 0.49 acres

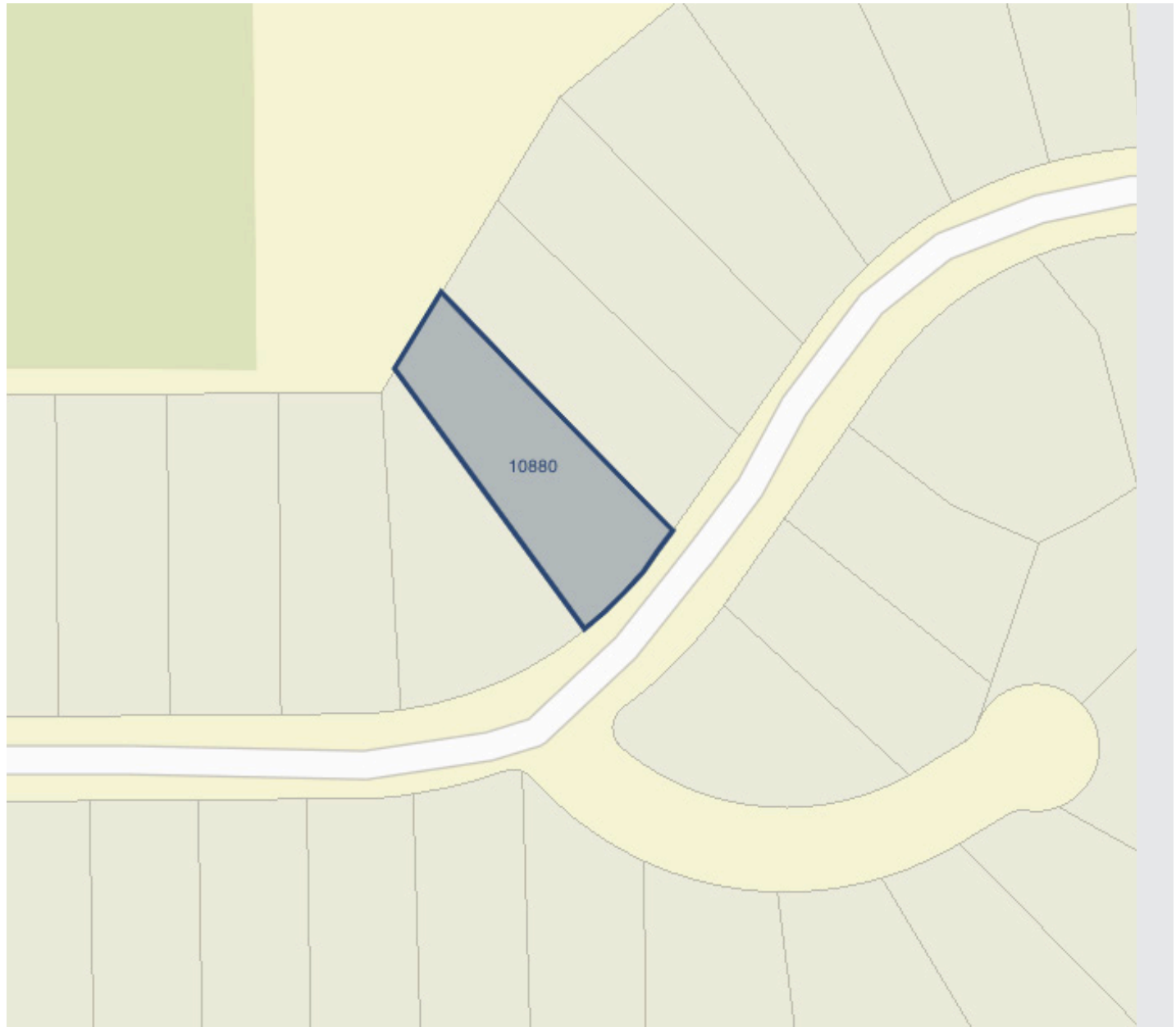


Lot 25 is a Premium half acre lot within a future enclave of stunning custom-built homes. Situated on the South side of Horth Hill and surrounded by parks and trails, this stunning property offers captivating sunny exposure with your home offering potential glimpses of the ocean and the town of Sidney. This outstanding lot offers a premier location within the 30 lot freehold subdivision and features sunny, usable land equipped with underground utilities. This location also features various hiking trails, parks, and fantastic schools for the kids including the newly constructed North Saanich middle school. Situated on the coveted north tip of the Saanich Peninsula and just a short drive from BC Ferries, the airport, and the Town of Sidney, this is a great opportunity to build your dream home in a highly sought-after location. Must see to appreciate.



# Lot Map

---





# Property Photos

EXTERIOR





# Greenpark Subdivision

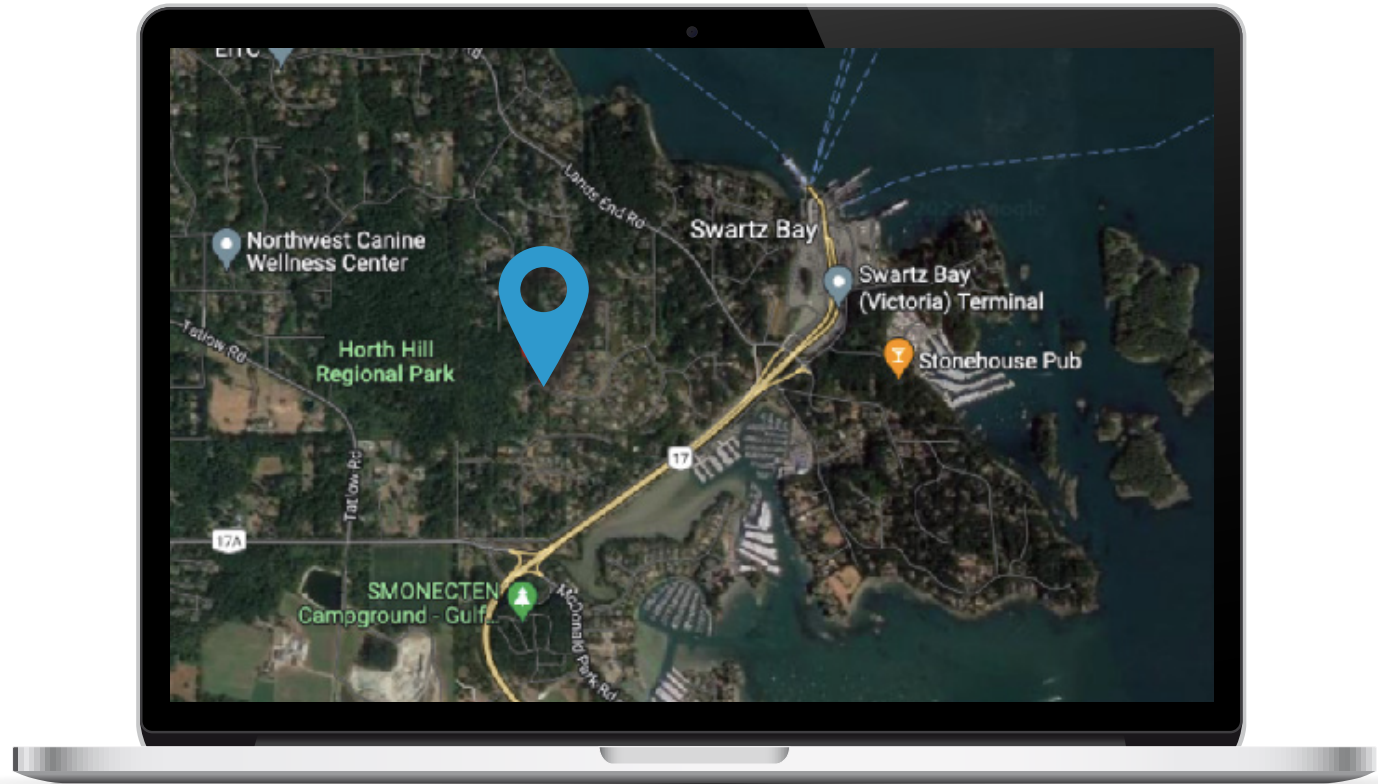
HORTH HILL





# Location

(GIS) MAPPING





 **CHACE  
WHITSON**  
REAL ESTATE GROUP

 **Macdonald  
Realty**





CEL · 250 818 9338 | TEL · 778 426 2262

[Chace@ChaceWhitson.com](mailto:Chace@ChaceWhitson.com) | [ChaceWhitson.com](http://ChaceWhitson.com)

2411 · Bevan Avenue Sidney, BC · V8L 4M9





Chace Whitson | 250.818.9338 | [Chace@ChaceWhitson.com](mailto:Chace@ChaceWhitson.com) | [ChaceWhitson.com](http://ChaceWhitson.com)