



# 2285 AMITY DRIVE

North Saanich







FOR SALE



**2285 Amity Drive**

North Saanich

SUMMARY OVERVIEW



LISTING PRICE:

\$1,050,000



LIVING AREA:

2,327 sq. ft.



BEDROOMS:

2



BATHROOMS:

2





Welcome to 2285 Amity Drive – An ocean-view rancher, primed for potential. Overlooking the Haro Strait, Gulf Islands, and Mount Baker's Peak, the home sits on a spacious 0.74-acre lot with an equally spacious 2327-sq.ft. layout. Bright, airy, and full of natural light, the 2-Bed/2-Bath home offers an open-concept living and dining room, generous in size and wrapped in windows to take in the views. Double French doors open to the adjoining family room and a passthrough leads through to the kitchen, breakfast nook, and sunroom, giving a connected feel to the living spaces. Tucked off the kitchen is a laundry and pantry space for additional storage, easily accessible. 2 bedrooms are thoughtfully situated on either side of the home, with the primary offering a 4-piece ensuite and double closets. Located in beautiful North Saanich, the home is close to schools, parks, and the Town of Sidney, and offers an opportunity to make it your own.



Garage	577 sq. ft.
Deck/Patio	848 sq. ft.







# Property Photos

EXTERIOR







## Property Photos

KITCHEN







# Property Photos

INTERIOR







## Property Photos

PRIMARY BEDROOM  
& ENSUITE

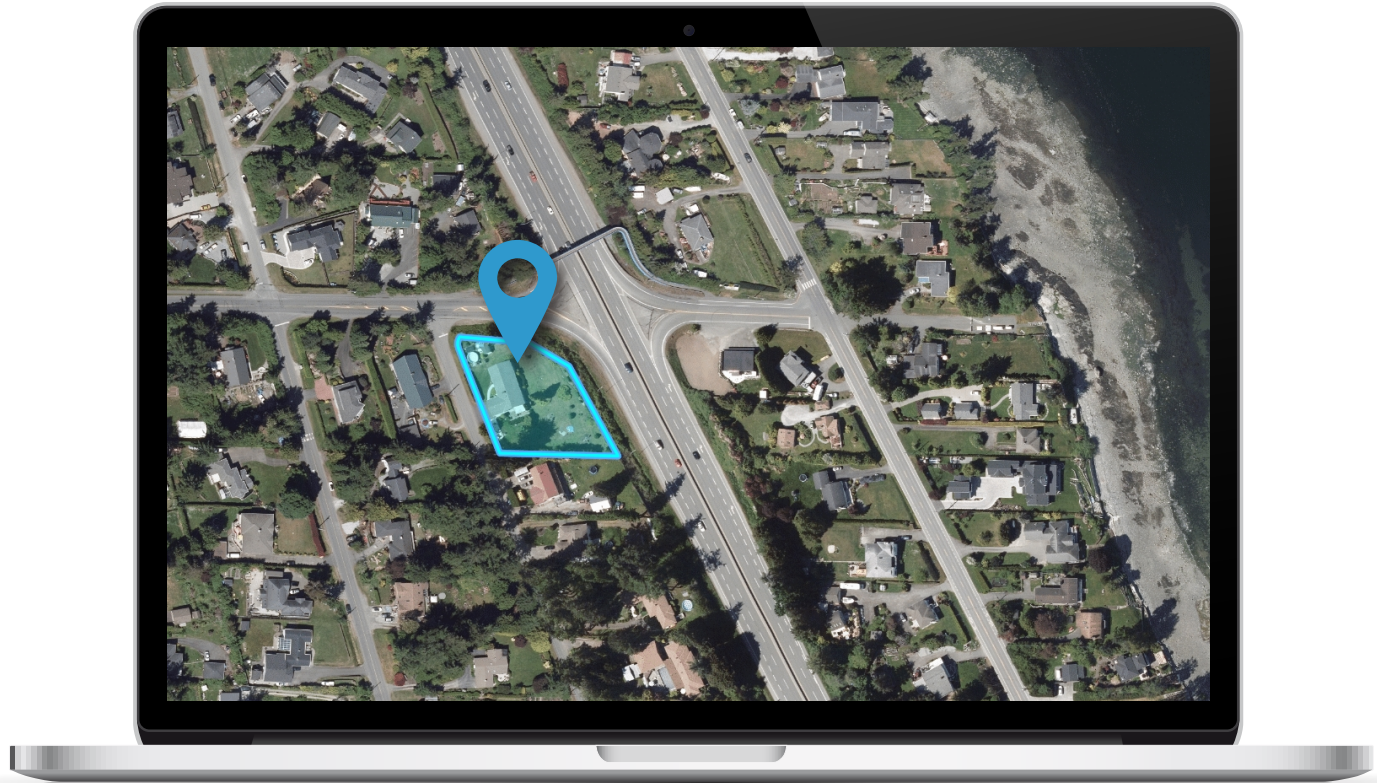






# Location

(GIS) MAPPING











CEL • 250 818 9338 | TEL • 778 426 2262

[Chace@ChaceWhitson.com](mailto:Chace@ChaceWhitson.com) | [ChaceWhitson.com](http://ChaceWhitson.com)

2411 • Bevan Avenue Sidney, BC • V8L 4M9





Chace Whitson | 250.818.9338 | [Chace@ChaceWhitson.com](mailto:Chace@ChaceWhitson.com) | [ChaceWhitson.com](http://ChaceWhitson.com)