



7060 SILVERDALE

Brentwood Bay





FOR SALE



7060 Silverdale Place

Brentwood Bay

SUMMARY OVERVIEW



LISTING PRICE:	\$1,185,000
----------------	-------------



LIVING AREA:	1,996 sq. ft.
--------------	---------------



BEDROOMS:	5
-----------	---



BATHROOMS:	3
------------	---



Welcome to 7060 Silverdale Place, a Tudor-inspired home in the heart of Brentwood Bay Village. With a nod to classic features – a peaked roof, half-timbering, diamond-pane windows – the home offers a nostalgic look and feel, perfect as it is, or primed to make your own. Offering a near-2000 sqft., this 5-bed/3-bath home provides main floor living with an open dining and living area, bright kitchen and breakfast nook, and 3 bedrooms, including the primary suite, along with a lower level, 2-bed/1-bath, walk-out rental suite. At the end of a quiet cul-de-sac, surrounded by mature landscaping, and overlooking the nearby fields, the home offers a serene setting. Enjoy a large backyard, south facing, fully-fenced, and with raised garden beds. Close to schools and parks, and within steps to local shops, restaurants, and grocery stores, this home offers a classic style in the perfect setting.

MAIN FLOOR
1197 SQ. FT.
8' CEILING HEIGHT



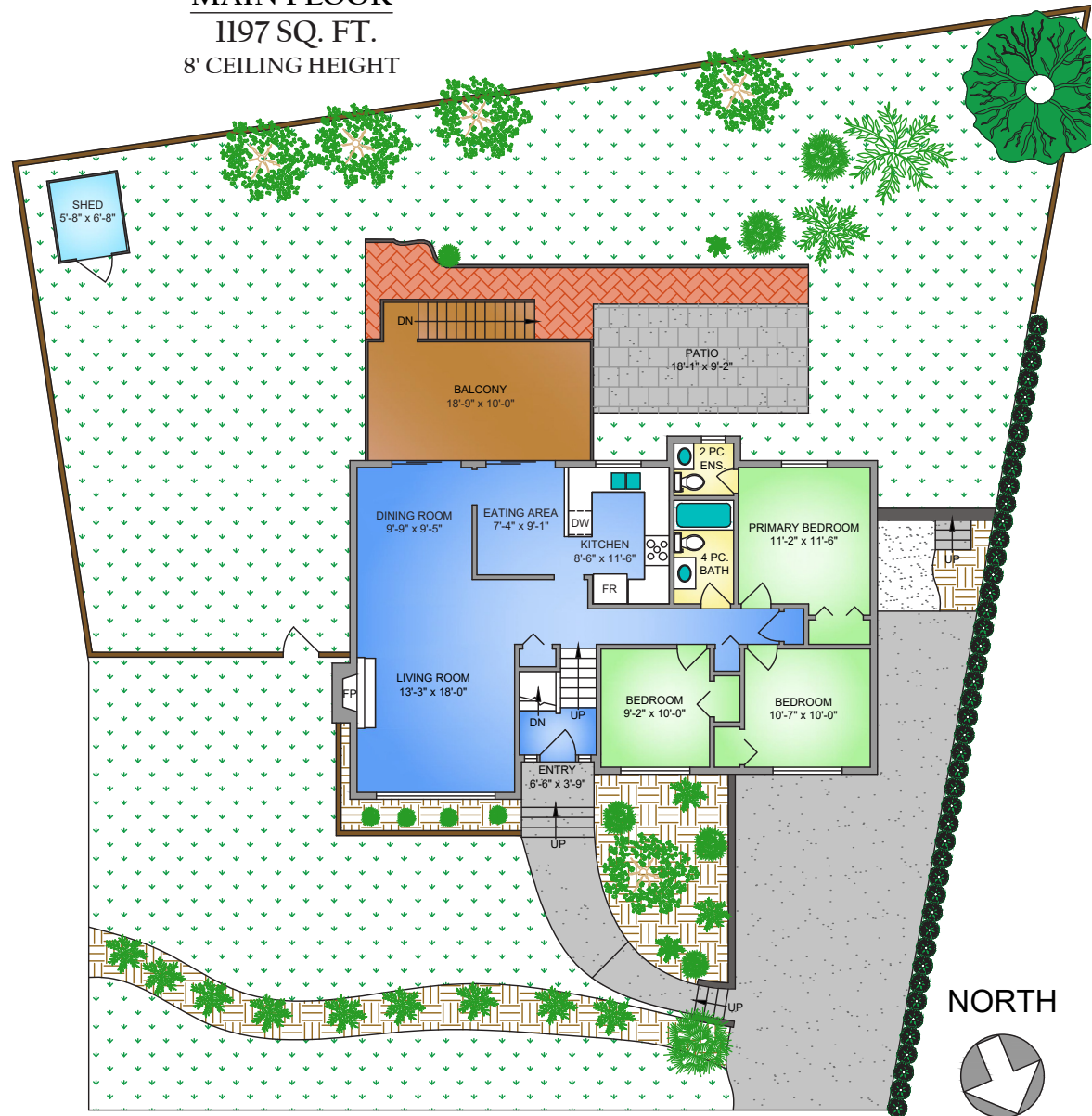
Property Floorplan

Main Floor 1,197 sq. ft.
Lower Floor 799 sq. ft.

TOTAL AREA 1,996 sq. ft.

Deck/Patio 352 sq. ft.
Unfinished 39 sq. ft.

Land Size 0.24 Acres



NORTH



0' 5' 10'
SCALE

* DIMENSIONS ARE FOR REFERENCE PURPOSES ONLY AND ARE NOT TAKEN FROM ORIGINAL BLUEPRINTS



Property Floorplan

Main Floor 1,197 sq. ft.

Lower Floor 799 sq. ft.

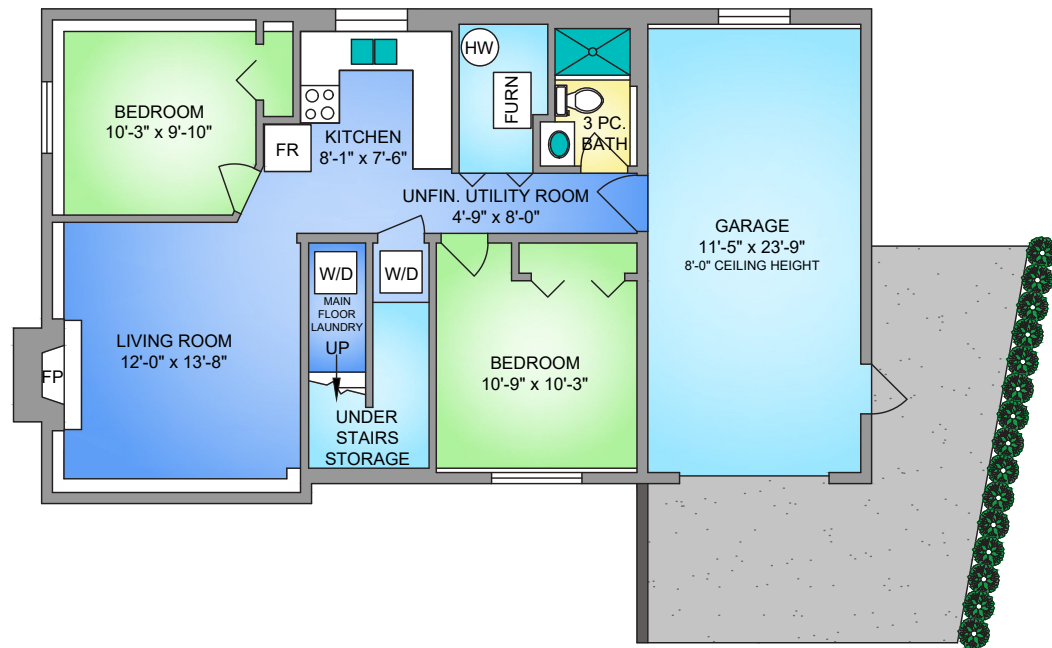
TOTAL AREA 1,996 sq. ft.

Deck/Patio 352 sq. ft.

Unfinished 39 sq. ft.

Land Size 0.24 Acres

LOWER FLOOR 799 SQ. FT. 7'-6" CEILING HEIGHT



NORTH



0' 5' 10'
SCALE

* DIMENSIONS ARE FOR REFERENCE PURPOSES ONLY AND ARE NOT TAKEN FROM ORIGINAL BLUEPRINTS



Property Photos

KITCHEN





Property Photos

INTERIOR





Property Photos

INTERIOR





Property Photos

EXTERIOR





Property Photos

SUITE





Property Photos

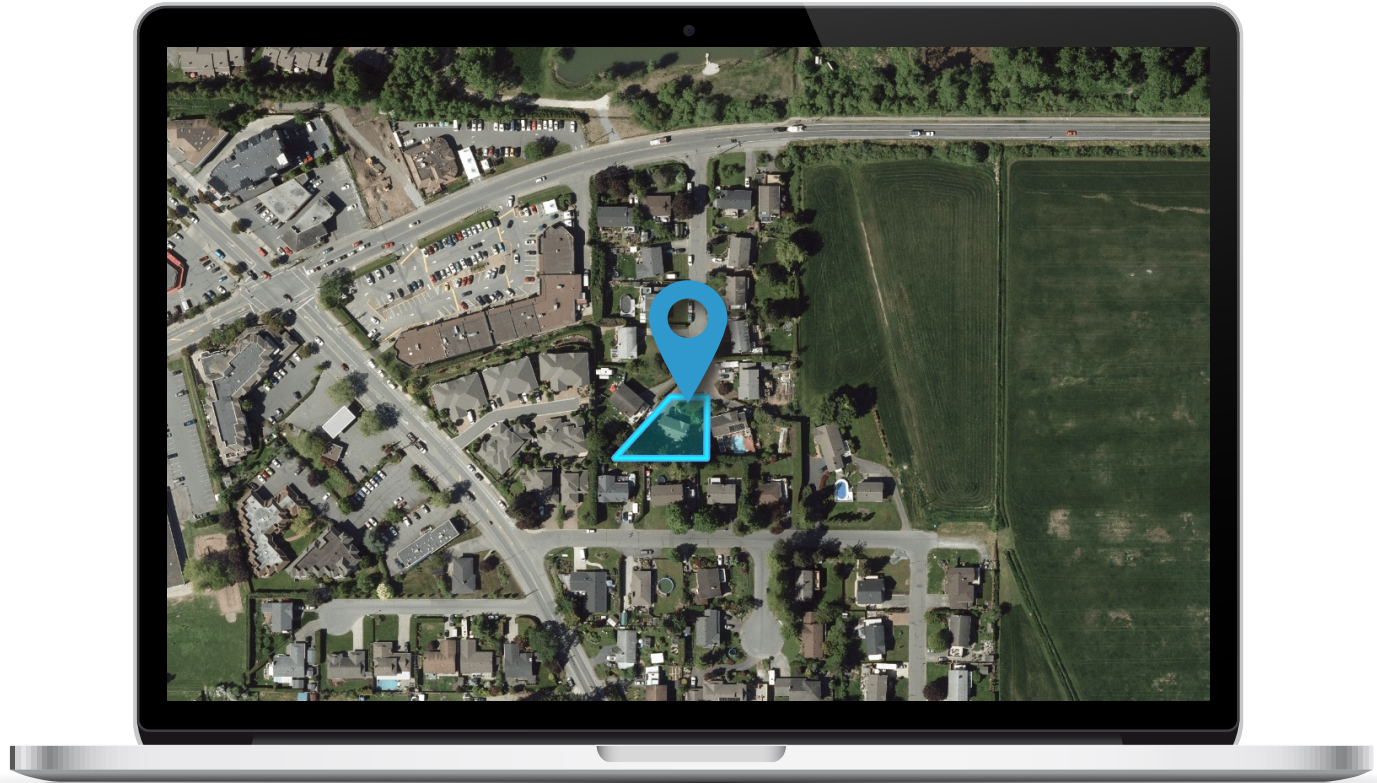
SUITE





Location

(GIS) MAPPING







CEL • 250 818 9338 | TEL • 778 426 2262

Chace@ChaceWhitson.com | ChaceWhitson.com

2411 • Bevan Avenue Sidney, BC • V8L 4M9





**CHACE
WHITSON**
PERSONAL REAL ESTATE CORPORATION



Chace Whitson | 250.818.9338 | Chace@ChaceWhitson.com | ChaceWhitson.com