



1580 MUNRO ROAD

North Saanich





FOR SALE



1580 Munro Road

North Saanich

SUMMARY OVERVIEW



LISTING PRICE:

\$1,650,000



LIVING AREA:

2,857 sq. ft.



BEDROOMS:

5



BATHROOMS:

3



Settle into 5-acres of tranquility with this picturesque property in the heart of North Saanich. Tree-lined, sun-drenched, and with your own swimmable pond, your home sits wrapped in natural beauty. With a traditional style and layout, this 2,834-sqft, 5bed/3bath home offers a timeless white kitchen, open family room, and defined, formal living and dining spaces. Spanning windows and French doors offer a continuous connection to the outside. A large, multipurpose laundry room, thoughtfully designed, opens to the back yard and serves as an additional mudroom. The second story houses all 5 bedrooms, including a spacious primary suite, with a walk-in closet and ensuite. A perfect family home, this property is poised with potential to make it your own, both inside and out. With a quintessential red barn, stalls, and paddocks, your 5 acres are full of opportunity. Close to parks and schools, steps to the ocean, and a short drive to Sidney, this property offers both, location and lifestyle.



Property Floorplan

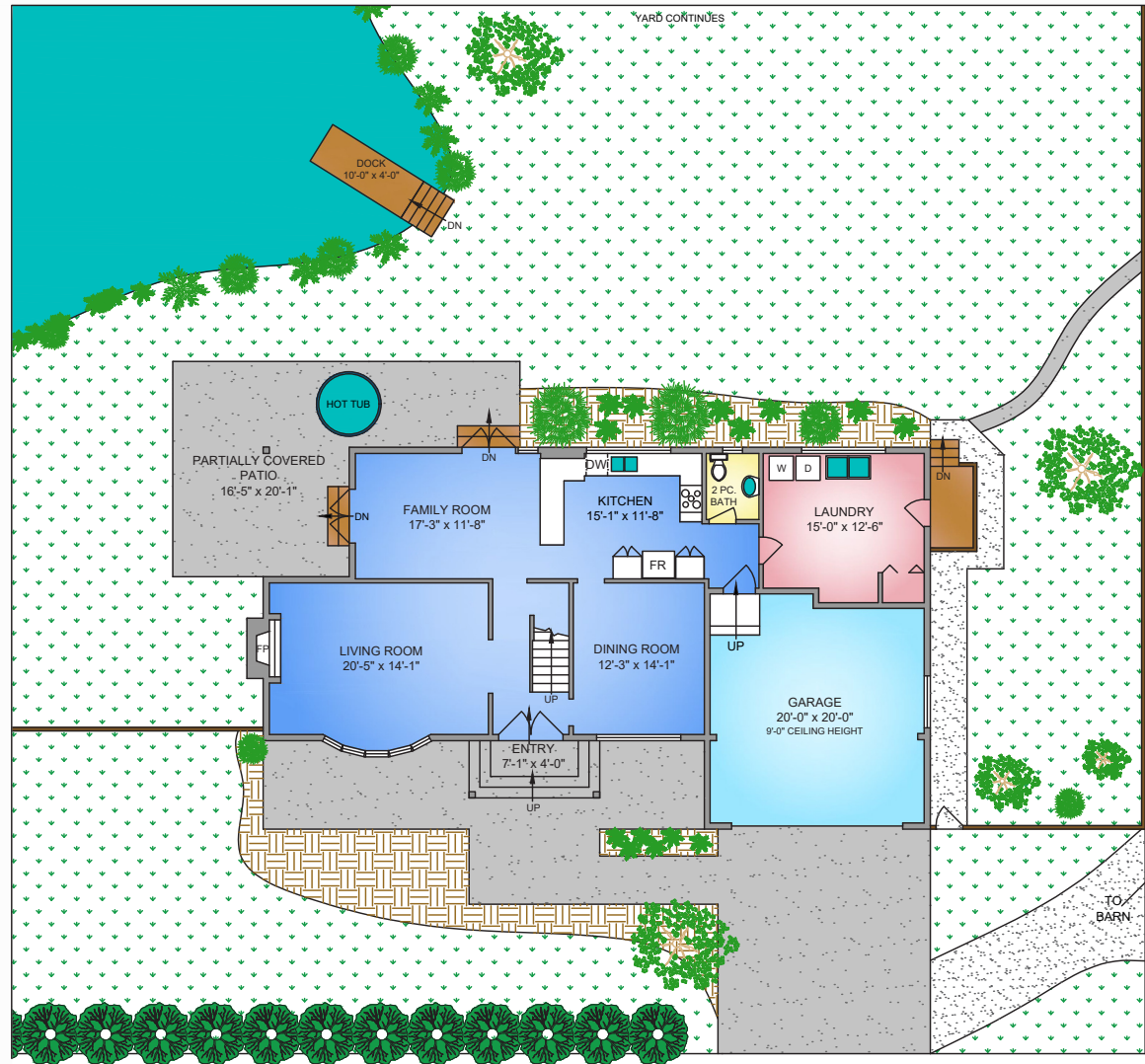
Main Floor 1,347 sq. ft.
Lower Floor 1,487 sq. ft.

TOTAL AREA 2,857 sq. ft.

Barn 1,412 sq. ft.
Garage 439 sq. ft.
Patio 457 sq. ft.

Land Size 5 Acres

MAIN FLOOR
1347 SQ. FT.
8' CEILING HEIGHT



NORTH



0' 5' 10'
SCALE



Property Floorplan

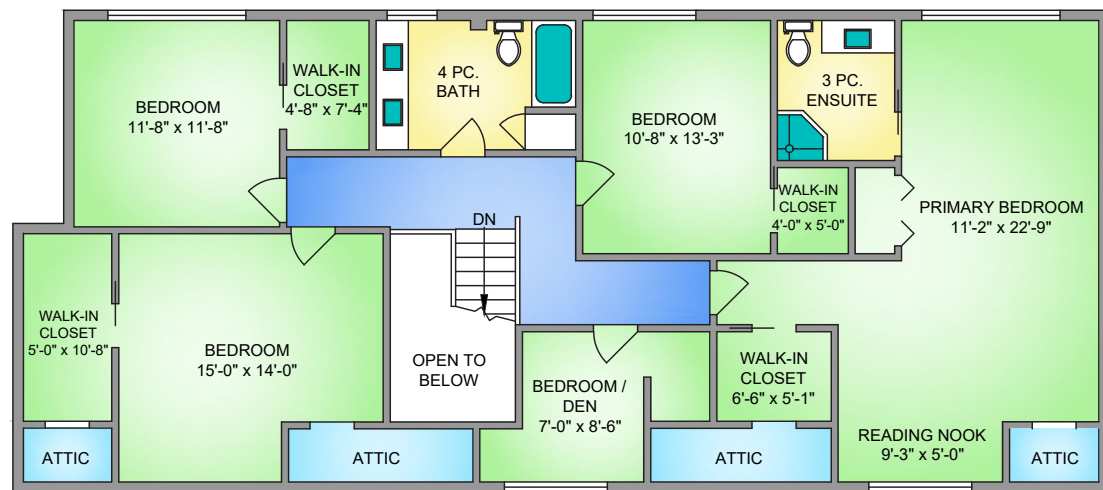
Main Floor 1,347 sq. ft.
Lower Floor 1,487 sq. ft.

TOTAL AREA 2,857 sq. ft.

Barn 1,412 sq. ft.
Garage 439 sq. ft.
Patio 457 sq. ft.

Land Size 5 Acres

UPPER FLOOR 1487 SQ. FT. 8' VAULTED CEILING



NORTH



0' 3' 6'
SCALE



Property Floorplan

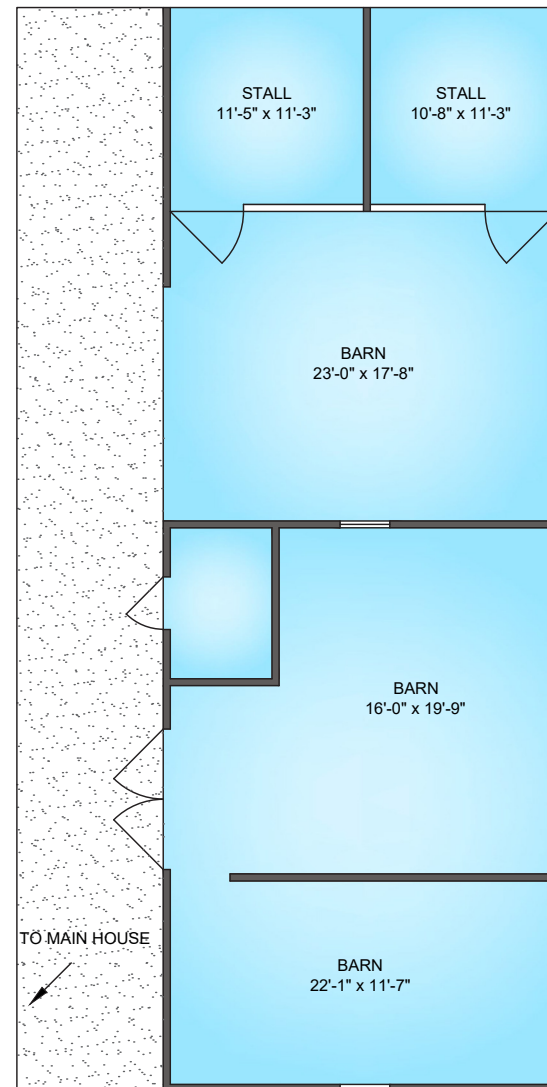
Main Floor 1,347 sq. ft.
Lower Floor 1,487 sq. ft.

TOTAL AREA 2,857 sq. ft.

Barn 1,412 sq. ft.
Garage 439 sq. ft.
Patio 457 sq. ft.

Land Size 5 Acres

BARN
1412 SQ. FT.
10' CEILING HEIGHT



NORTH



0' 3' 6'
SCALE



Property Photos

EXTERIOR





Property Photos

KITCHEN





Property Photos

INTERIOR





Property Photos

PRIMARY BEDROOM
& ENSUITE





Property Photos

EXTERIOR





Property Photos

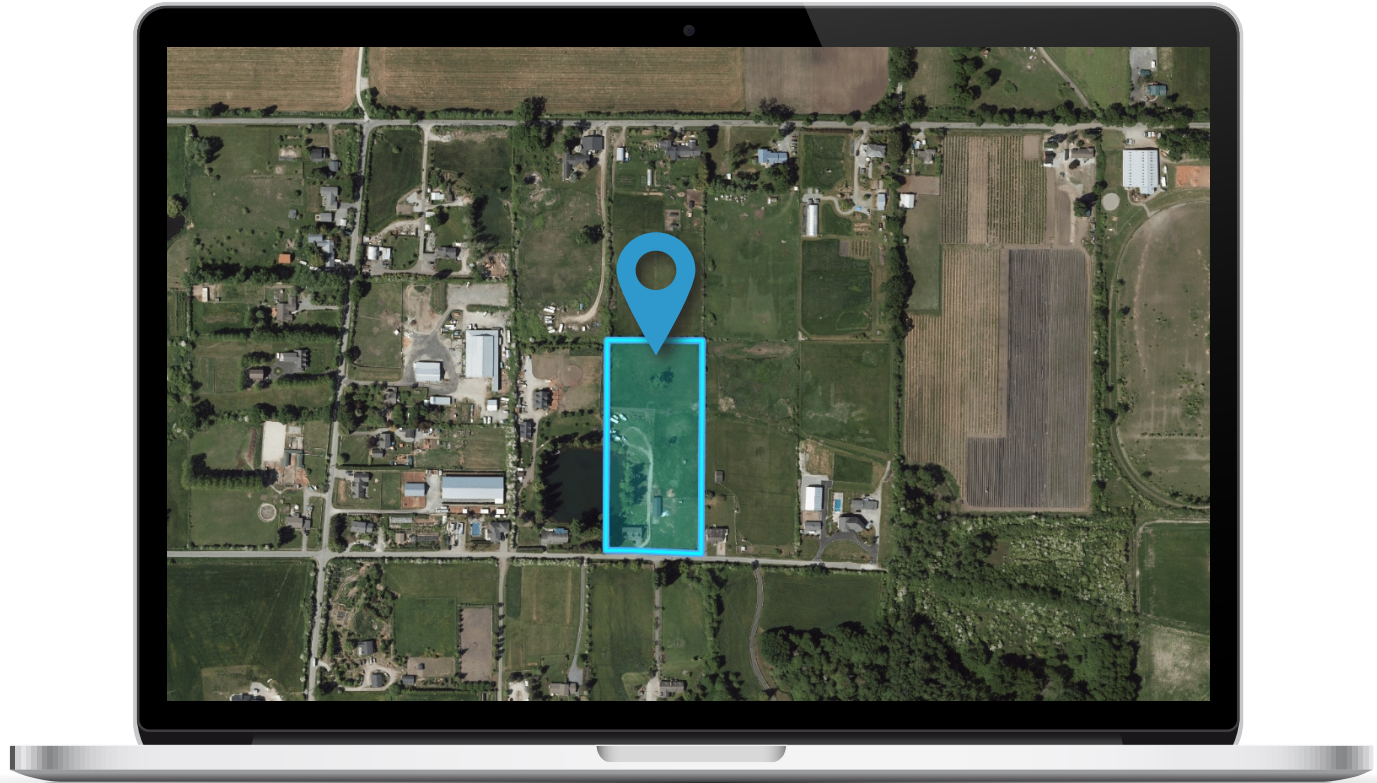
EXTERIOR





Location

(GIS) MAPPING







CEL • 250 818 9338 | TEL • 778 426 2262

Chace@ChaceWhitson.com | ChaceWhitson.com

2411 • Bevan Avenue Sidney, BC • V8L 4M9





Chace Whitson | 250.818.9338 | Chace@ChaceWhitson.com | ChaceWhitson.com