



10740 BAYFIELD ROAD

North Saanich





FOR SALE



10740 Bayfield Road N

North Saanich

SUMMARY OVERVIEW



LISTING PRICE:

\$2,390,000



LIVING AREA:

4,124 sq. ft.



BEDROOMS:

5



BATHROOMS:

5



Set among newly built, multimillion-dollar homes, sits a fitting Scandinavian Farmhouse with ocean views. This custom-built, 4124 sqft home blends organic minimalism with modern luxury. An open-concept great room centers the home with 26-foot ceilings and spanning windows. The kitchen pairs its minimal aesthetic with maximal luxuries, including a 6-burner gas range, built-in Miele coffee, full pantry, and wet bar. The main living area opens to the back garden: beautifully landscaped, private, and with west-facing exposure. Also connected to the back garden is the primary bedroom, located on the main floor, and with a luxurious ensuite and walk-in closet. Additional bedrooms, along with a flexroom, and 1200 sqft of patio make up the second story. The home offers a total of 5 bedrooms and 5 bathrooms, including a self-contained, 1-bed/1-bath suite. Inspired by Scandinavian simplicity, this home perfectly blends the beauty of nature with modern living.

MAIN FLOOR
2339 SQ. FT.
26'-3" VAULTED CEILING



Property Floorplan

Main Floor 2,287 sq. ft.
Lower Floor 1,112 sq. ft.

TOTAL AREA 4,124 sq. ft.

Deck/Patio 2,526 sq. ft.
Garage 668 sq. ft.
Suite 725 sq. ft.

Land Size .50 Acres



NORTH



0' 5' 10'
SCALE



Property Floorplan

Main Floor 2,287 sq. ft.
Lower Floor 1,112 sq. ft.

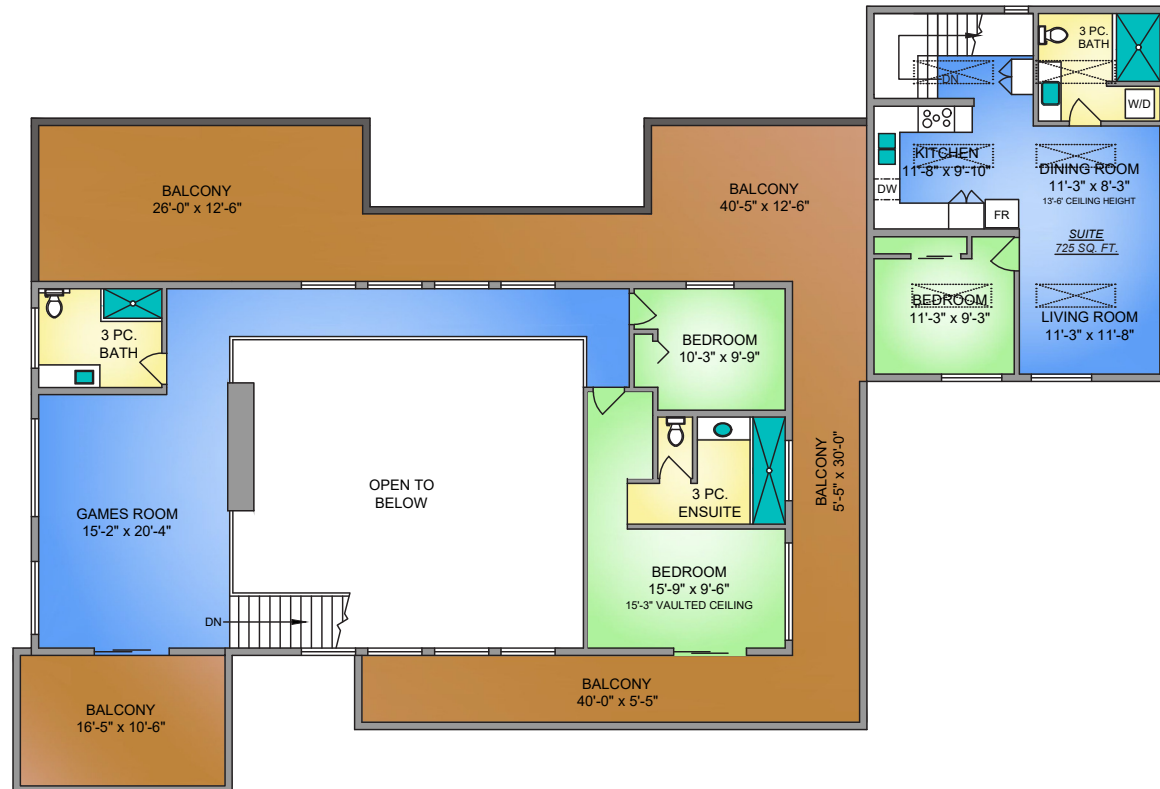
TOTAL AREA 4,124 sq. ft.

Deck/Patio 2,526 sq. ft.
Garage 668 sq. ft.
Suite 725 sq. ft.

Land Size .50 Acres

UPPER FLOOR
1837 SQ. FT.
15'-3" VAULTED CEILING

SUITE
725 SQ. FT.
13'-6" VAULTED CEILING



NORTH



0' 5' 10'
SCALE



Property Photos

EXTERIOR





Property Photos

KITCHEN





Property Photos

INTERIOR





Property Photos

PRIMARY BEDROOM
& ENSUITE





Property Photos

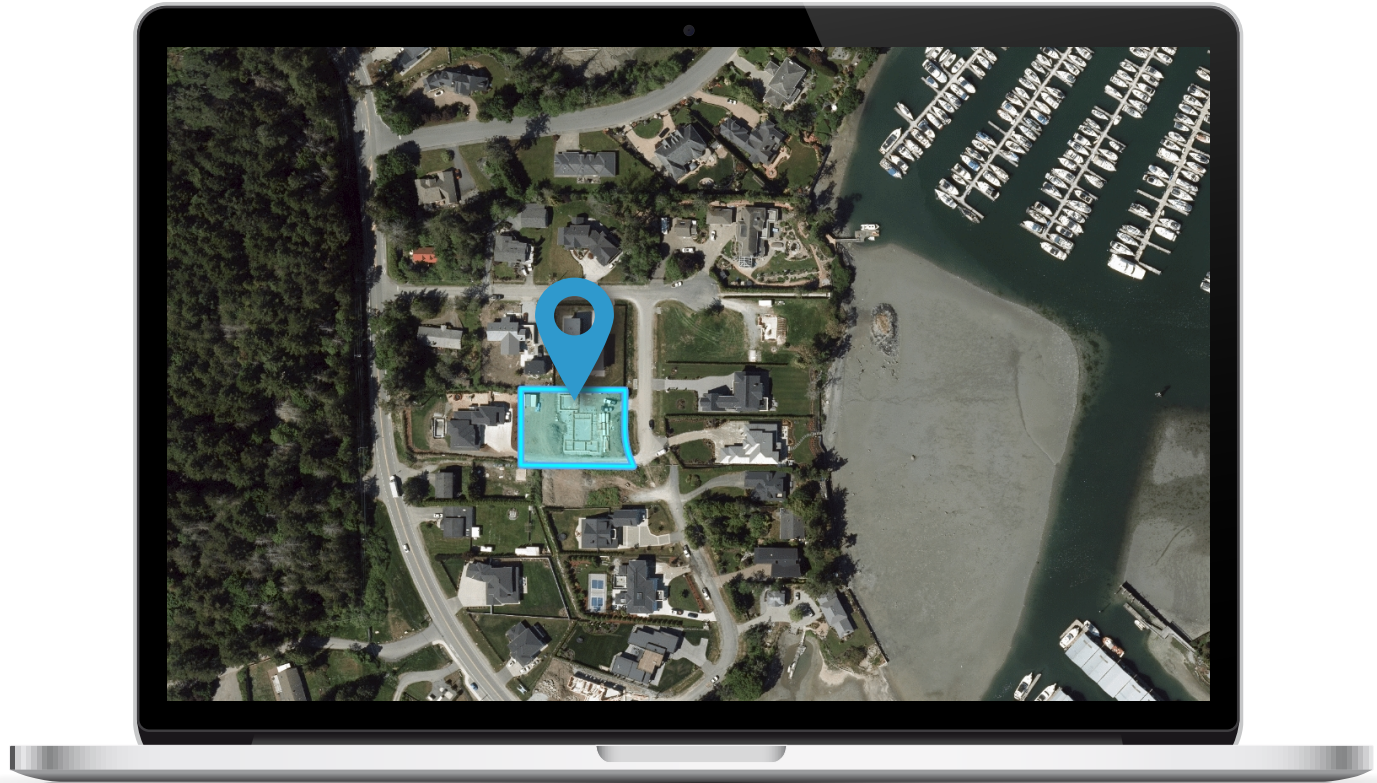
EXTERIOR





Location

(GIS) MAPPING





 **CHACE
WHITSON**
PERSONAL REAL ESTATE CORPORATION


**Macdonald
Realty**



CEL • 250 818 9338 | TEL • 778 426 2262

Chace@ChaceWhitson.com | ChaceWhitson.com

2411 • Bevan Avenue Sidney, BC • V8L 4M9





**CHACE
WHITSON**
PERSONAL REAL ESTATE CORPORATION



Chace Whitson | 250.818.9338 | Chace@ChaceWhitson.com | ChaceWhitson.com