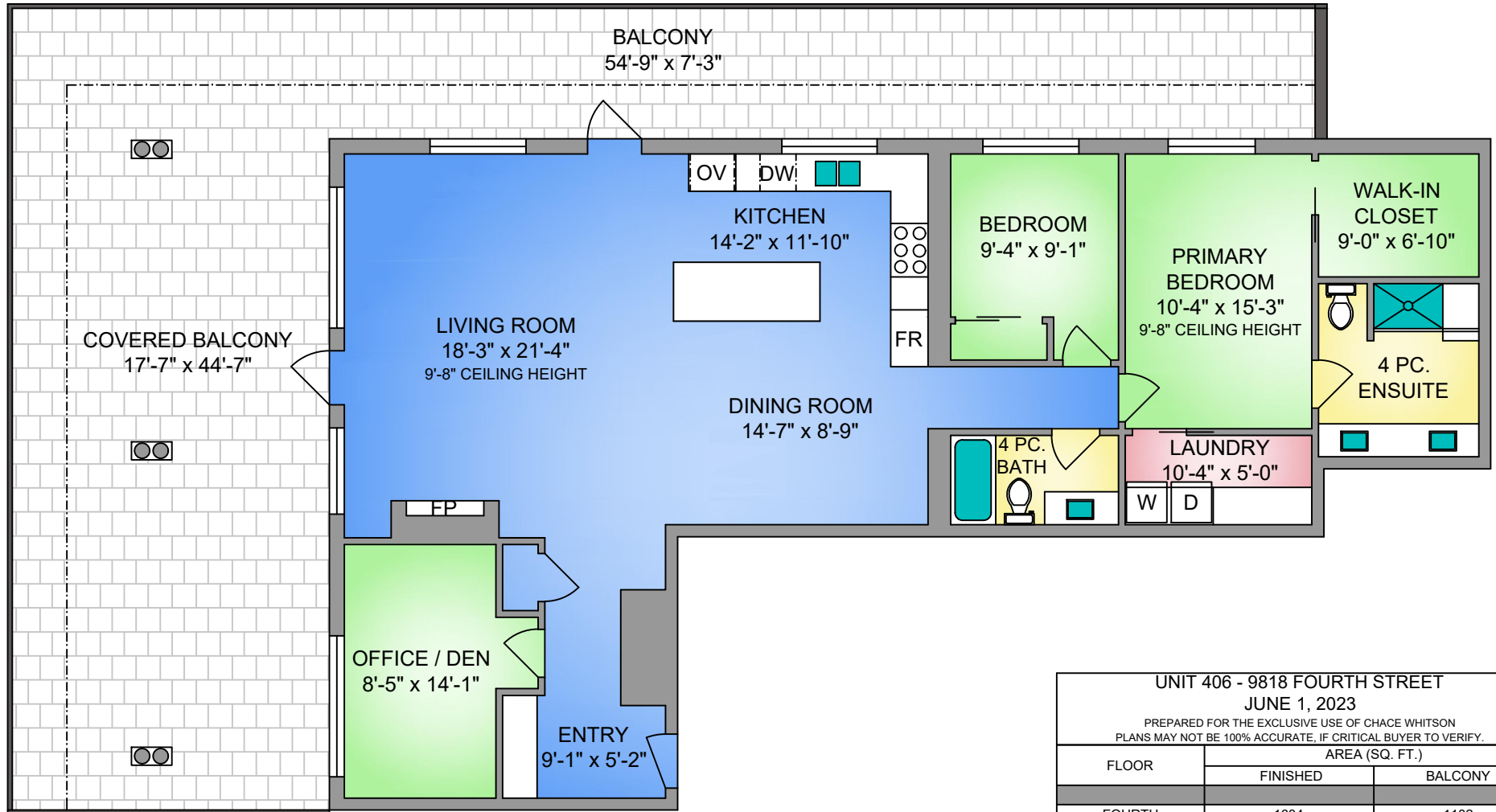
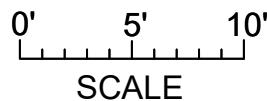
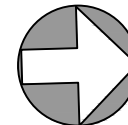


UNIT 406 - 9818 FOURTH STREET
1634 SQ. FT.
 9'-8" TO 8' CEILING HEIGHT



UNIT 406 - 9818 FOURTH STREET		
JUNE 1, 2023		
PREPARED FOR THE EXCLUSIVE USE OF CHACE WHITSON		
PLANS MAY NOT BE 100% ACCURATE. IF CRITICAL BUYER TO VERIFY.		
FLOOR	AREA (SQ. FT.)	
	FINISHED	BALCONY
FOURTH	1634	1182

NORTH



250-884-9753
 matt@propermeasure.com
 www.propermeasure.com

