



10927 MADRONA DRIVE

North Saanich





FOR SALE



10927 Madrona Drive

North Saanich

SUMMARY OVERVIEW



LISTING PRICE:

\$1,795,000



LIVING AREA:

2,437 sq. ft.



BEDROOMS:

3 + Office



BATHROOMS:

3



Situated in the quiet and highly desirable Deep Cove neighbourhood, this striking ocean view property features 3 beds + office & 3 baths w/ 2,437 SF of meticulously designed living space. Highlights include a bright chef's kitchen with high-end appliances & quartz countertops, a home office and a powder room on the main floor. Upstairs the primary bedroom offers ocean views, a 5-piece spa-like ensuite & walk-in closet, two additional spacious bedrooms, loft space, and 4-piece bathroom. Outside you will find a large southeast-facing patio perfect for enjoying the serene outdoors & a well-manicured easy-care front yard. Additional highlights include an oversized double-car garage and heat pump for all-year comfort. Conveniently located just minutes from the beach, marina, excellent trails, & wineries, this home allows you to experience a quintessential west coast lifestyle while enjoying all comforts of a well-appointed home.

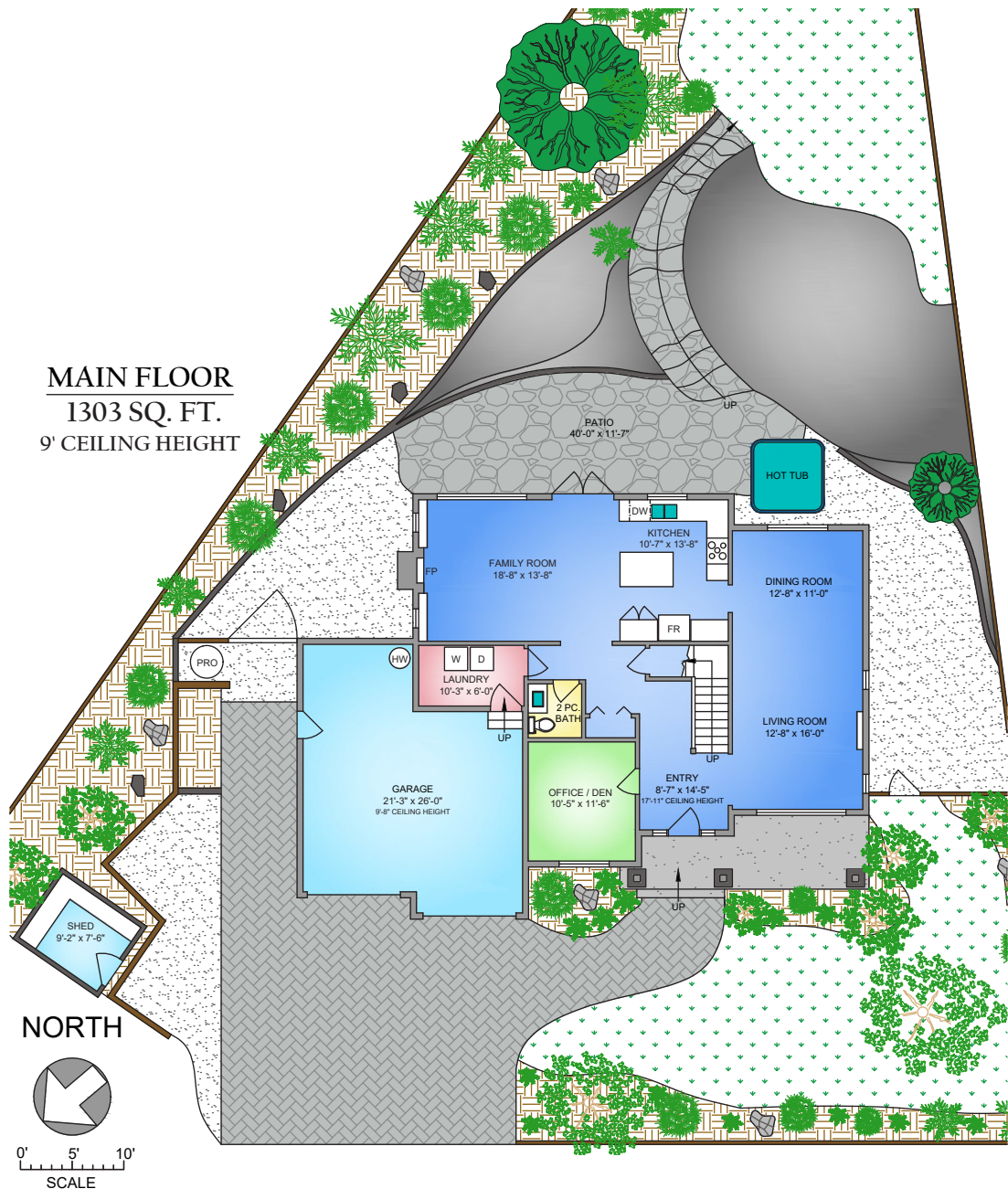


Property Floorplan

Main Floor 1,303 sq. ft.
Lower Floor 1,134 sq. ft.

TOTAL AREA 2,437 sq. ft.

Garage 498 sq. ft.
Deck/Patio 457 sq. ft.



* DIMENSIONS ARE FOR REFERENCE PURPOSES ONLY AND ARE NOT TAKEN FROM ORIGINAL BLUEPRINTS



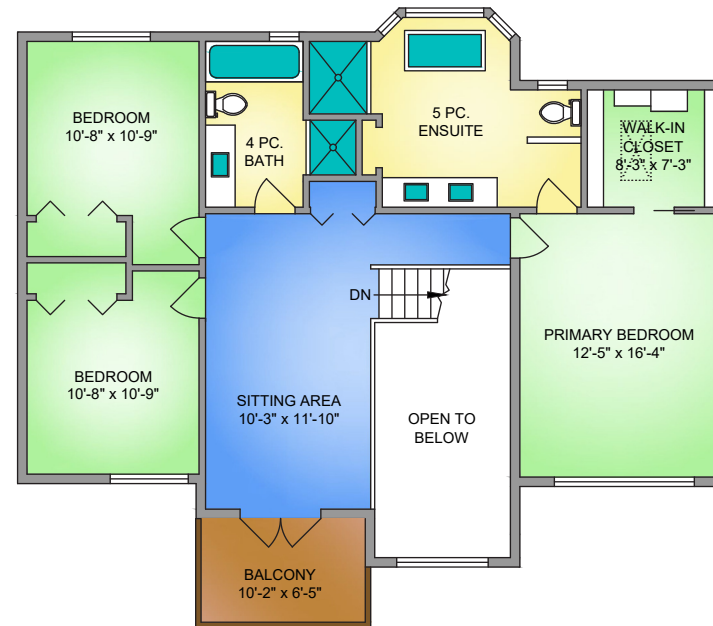
Property Floorplan

Main Floor 1,303 sq. ft.
Lower Floor 1,134 sq. ft.

TOTAL AREA 2,437 sq. ft.

Garage 498 sq. ft.
Deck/Patio 457 sq. ft.

UPPER FLOOR
1134 SQ. FT.
8' CEILING HEIGHT



NORTH



0' 5' 10'
SCALE

* DIMENSIONS ARE FOR REFERENCE PURPOSES ONLY AND ARE NOT TAKEN FROM ORIGINAL BLUEPRINTS



Property Photos

EXTERIOR





Property Photos

INTERIOR





Property Photos

KITCHEN





Property Photos

INTERIOR





Property Photos

PRIMARY BEDROOM & ENSUITE





Location

(GIS) MAPPING







CEL • 250 818 9338 | TEL • 778 426 2262

Chace@ChaceWhitson.com | ChaceWhitson.com

2411 • Bevan Avenue Sidney, BC • V8L 4M9





Chace Whitson | 250.818.9338 | Chace@ChaceWhitson.com | ChaceWhitson.com