



# 9542 JURA ROAD

North Saanich







FOR SALE



**9542 Jura Road**

North Saanich

SUMMARY OVERVIEW



LISTING PRICE:

\$1,500,000



LIVING AREA:

4,306 sq. ft.



BEDROOMS:

6 + office



BATHROOMS:

5





Gorgeous 6 bed/5 bath family home situated on a picturesque 1.13-acre Ardmore property! Featuring 4,517 sqft of exquisitely designed living space w/ quality finishes & beautiful accents, this home is sure to impress. Highlights include an open concept floor plan w/ oversized windows allowing for incredible natural light; a gorgeous kitchen w/ wood cabinetry, SS appliances & hand milled flooring. The flexible floor plan allows for additional accommodations on the main floor w/ separate access. The stunning theme continues on the lower level featuring a spacious rec room & BONUS self-contained 2 bed suite. Step outside into an impeccable outdoor living space w/ beautiful landscaping, mature trees, loads of privacy & plenty of parking for an RV or boat. Situated in the R3 zone, offering potential for a detached carriage home. Located within walking distance to the beaches & just minutes from the Airport, BC Ferries, and the Town of Sidney, this one-of-a-kind property is truly a must-see!

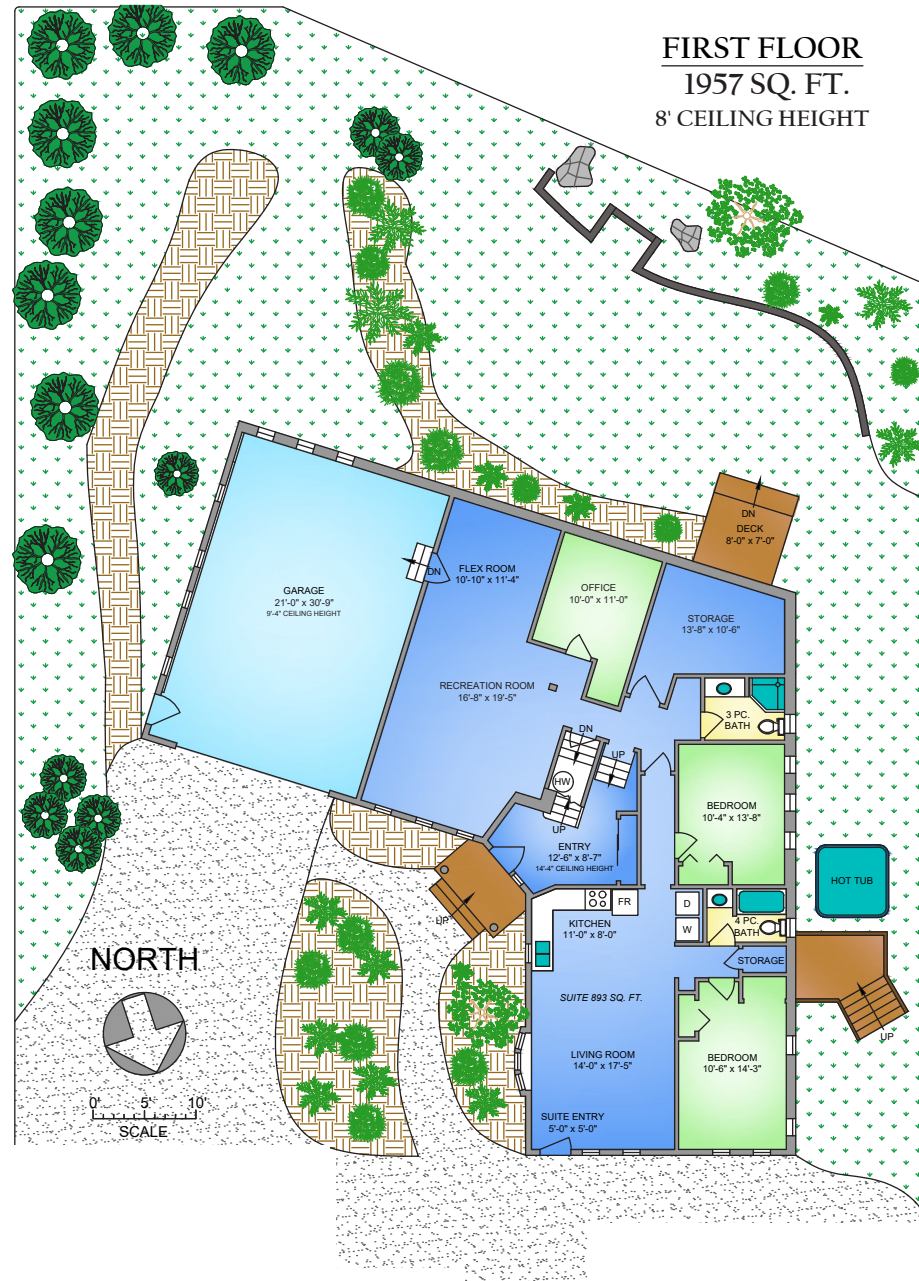


# Property Floorplan

First Floor 1,957 sq. ft.  
Second Floor 2,560 sq. ft.

**TOTAL AREA 4,517 sq. ft.**

Suite 893 sq. ft.  
Garage 700 sq. ft.  
Deck 56 sq. ft.  
Lot Size 1.13 acres



\* DIMENSIONS ARE FOR REFERENCE PURPOSES ONLY AND ARE NOT TAKEN FROM ORIGINAL BLUEPRINTS



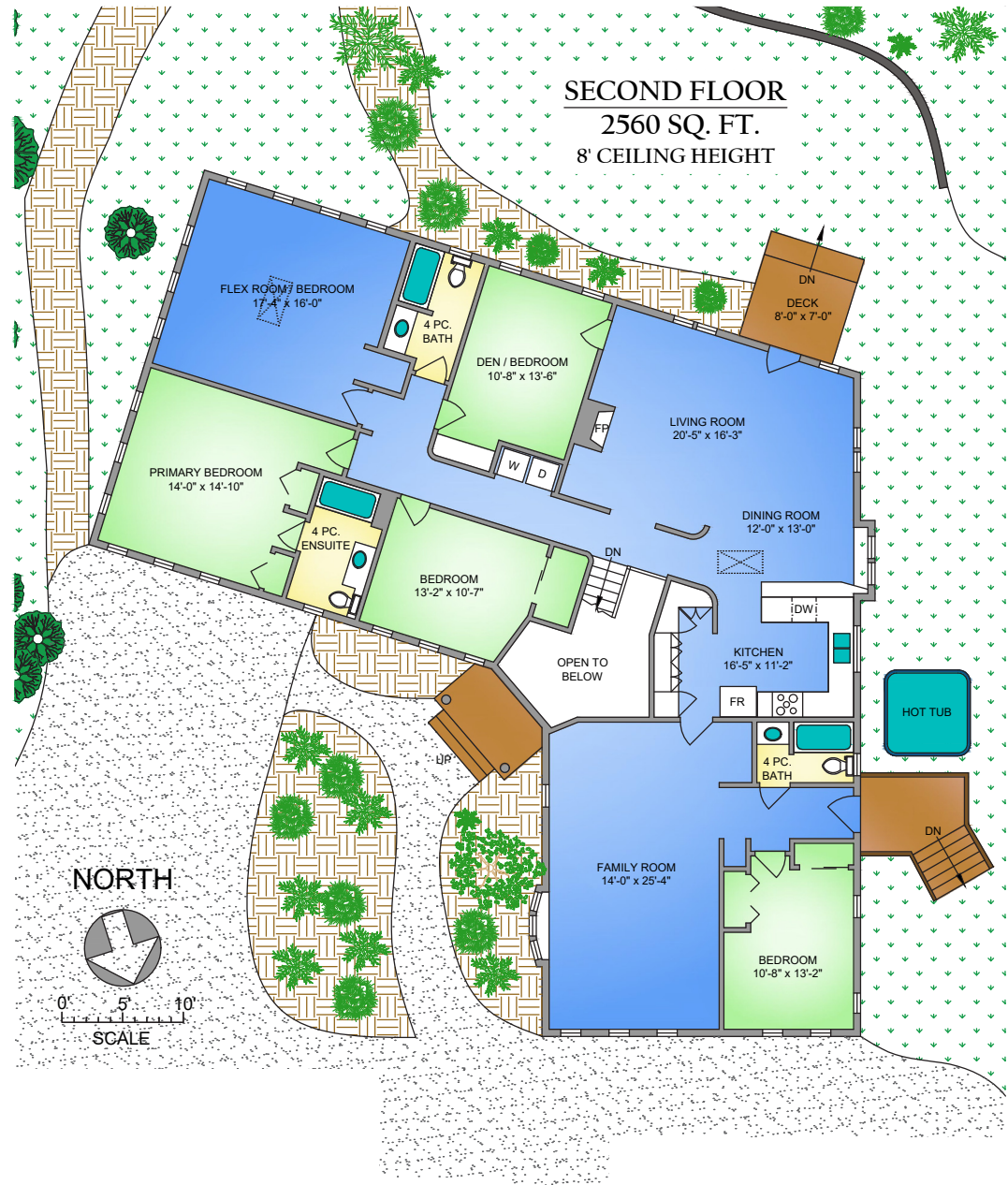


## Property Floorplan

First Floor 1,957 sq. ft.  
Second Floor 2,560 sq. ft.

**TOTAL AREA 4,517 sq. ft.**

Suite 893 sq. ft.  
Garage 700 sq. ft.  
Deck 56 sq. ft.  
Lot Size 1.13 acres



\* DIMENSIONS ARE FOR REFERENCE PURPOSES ONLY AND ARE NOT TAKEN FROM ORIGINAL BLUEPRINTS





# Property Photos

KITCHEN







# Property Photos

INTERIOR







## Property Photos

INTERIOR







# Property Photos

SUITE







## Property Photos

EXTERIOR

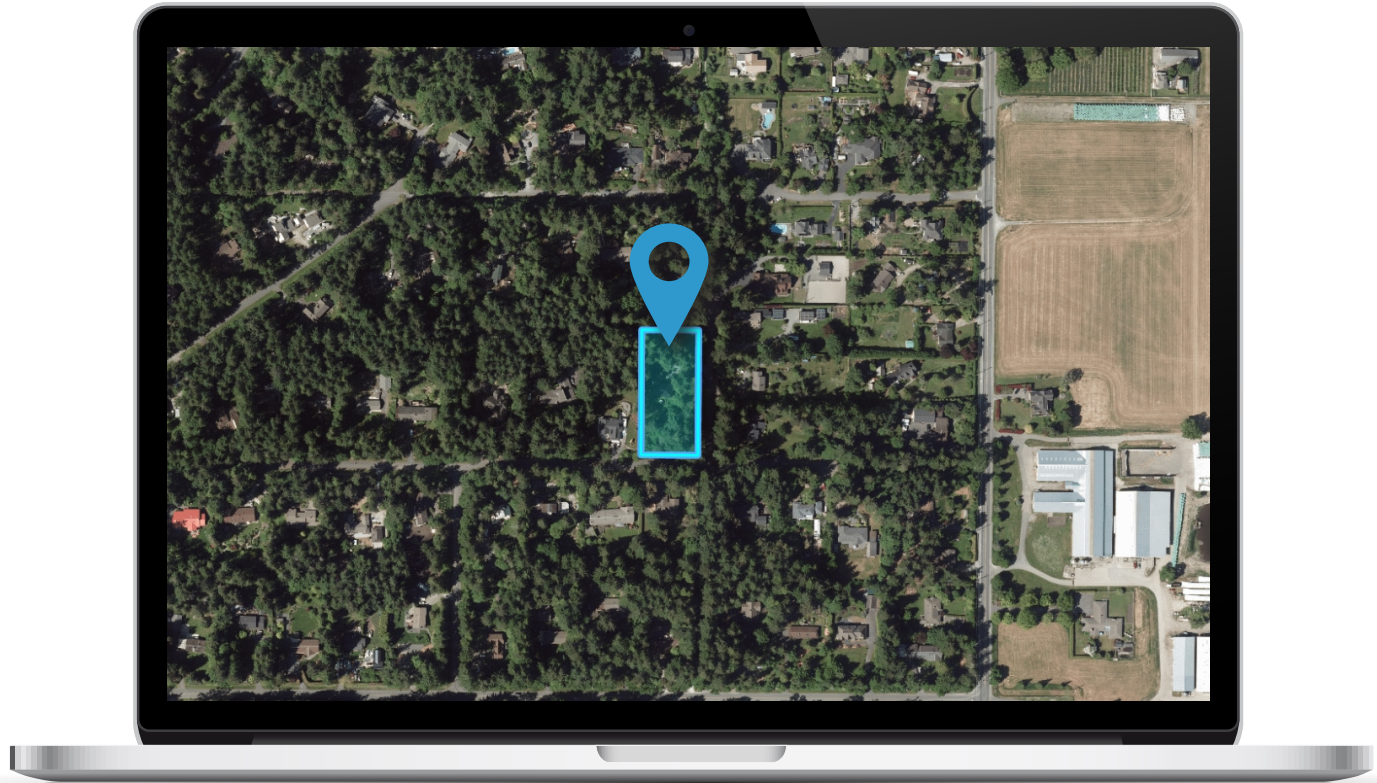






## Location

(GIS) MAPPING











CEL • 250 818 9338 | TEL • 778 426 2262

[Chace@ChaceWhitson.com](mailto:Chace@ChaceWhitson.com) | [ChaceWhitson.com](http://ChaceWhitson.com)

2411 • Bevan Avenue Sidney, BC • V8L 4M9







Chace Whitson | 250.818.9338 | [Chace@ChaceWhitson.com](mailto:Chace@ChaceWhitson.com) | [ChaceWhitson.com](http://ChaceWhitson.com)