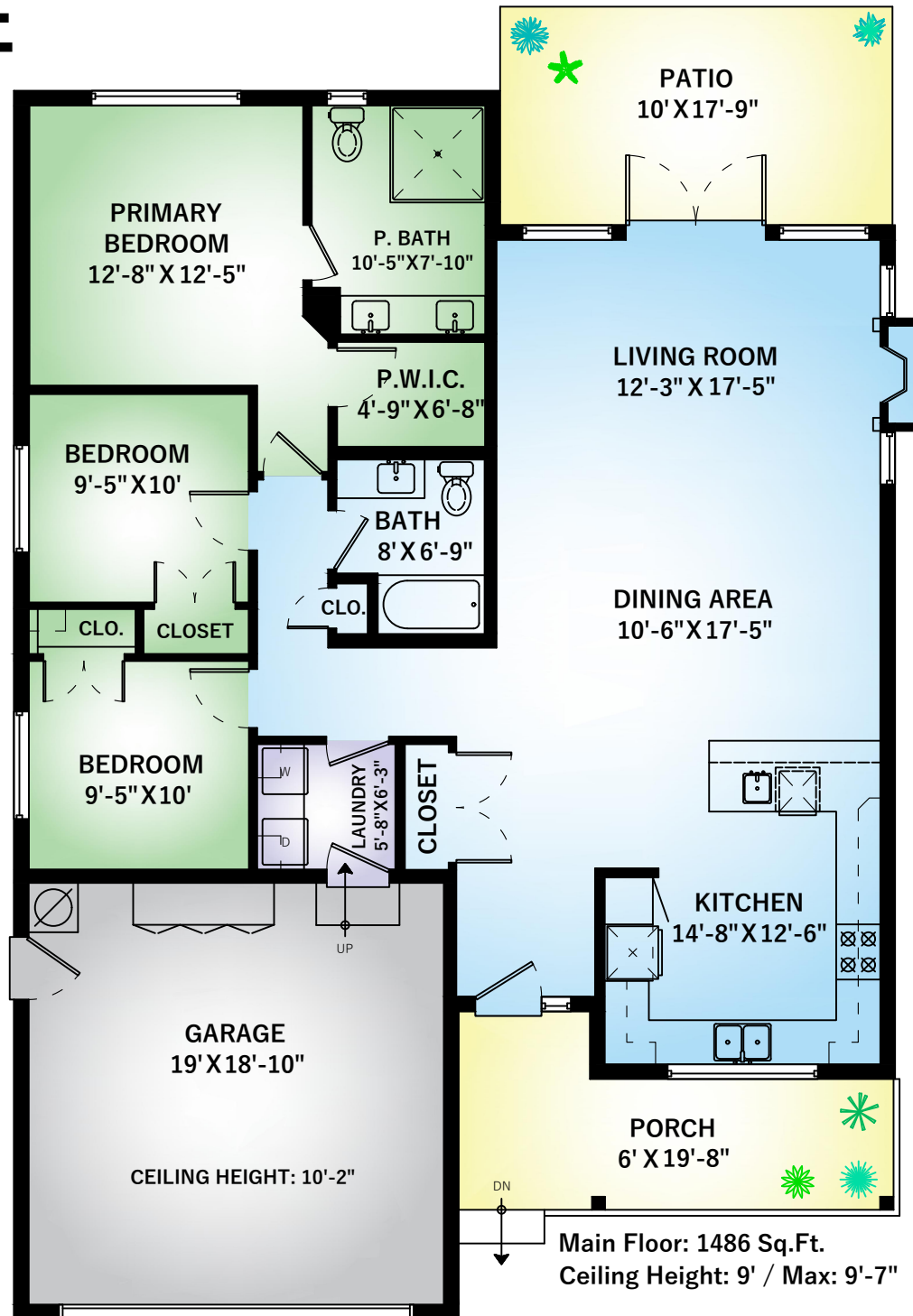


# 2427 LOVELL AVE

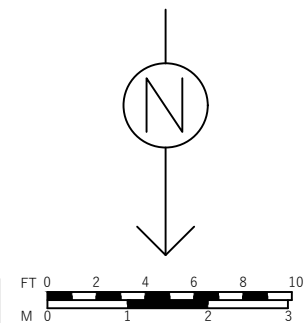
SIDNEY, BC



Main Floor

1486 SQ.FT.

Patio	176 SQ.FT.
Porch	141 SQ.FT.
Garage	395 SQ.FT.
<b>Total Extras</b>	<b>712 SQ.FT.</b>



Main Floor: 1486 Sq.Ft.  
Ceiling Height: 9' / Max: 9'-7"

SUPPLIED BY:

**MATTHEW JAMES  
PHOTOGRAPHY**  
WWW.MATTHEWJAMESPHOTO.CA