

10433 ALLBAY ROAD

Sidney





FOR SALE



10433 Allbay Road Sidney

SUMMARY OVERVIEW



LISTING PRICE: \$3,600,000



LIVING AREA: 3,195 sq. ft.



BED: 4



BATH: 4



This 3,195 sqft West Coast style oceanfront home has stunning views of Roberts Bay, w/ uncompromised quality & craftsmanship. The custom kitchen has wood cabinetry, SS appliances, 6-burner gas range & an oversized island w/ a maple countertop & bar area. The open living space has custom millwork, gas fireplace & 9 ft beamed ceilings highlighting the ocean views. The main level includes fir floors, heated slate tile entry & 4 sets of French doors opening to a covered front porch, creating true indoor/outdoor living. The primary bdrm upstairs has vaulted ceilings, ocean views, gas fireplace, 2 walk-in closets & a 5-piece en-suite w/ soaker tub & glass shower. Upstairs offers 2 additional bedrooms & 2 bathrooms w/ a spacious games room w/ high ceilings, murphy bed & gas fireplace. The unfinished basement has 8ft ceilings & crawl space. Step out to a landscaped low-maintenance yard w/ access to the low-bank waterfront and panoramic views. Located minutes to everything Sidney has to offer.



Property Floorplan

Main Floor 1,235 sq. ft.

Upper Floor 1,960 sq. ft.

TOTAL AREA 3,195 sq. ft.

Patio/Deck 575 sq. ft.

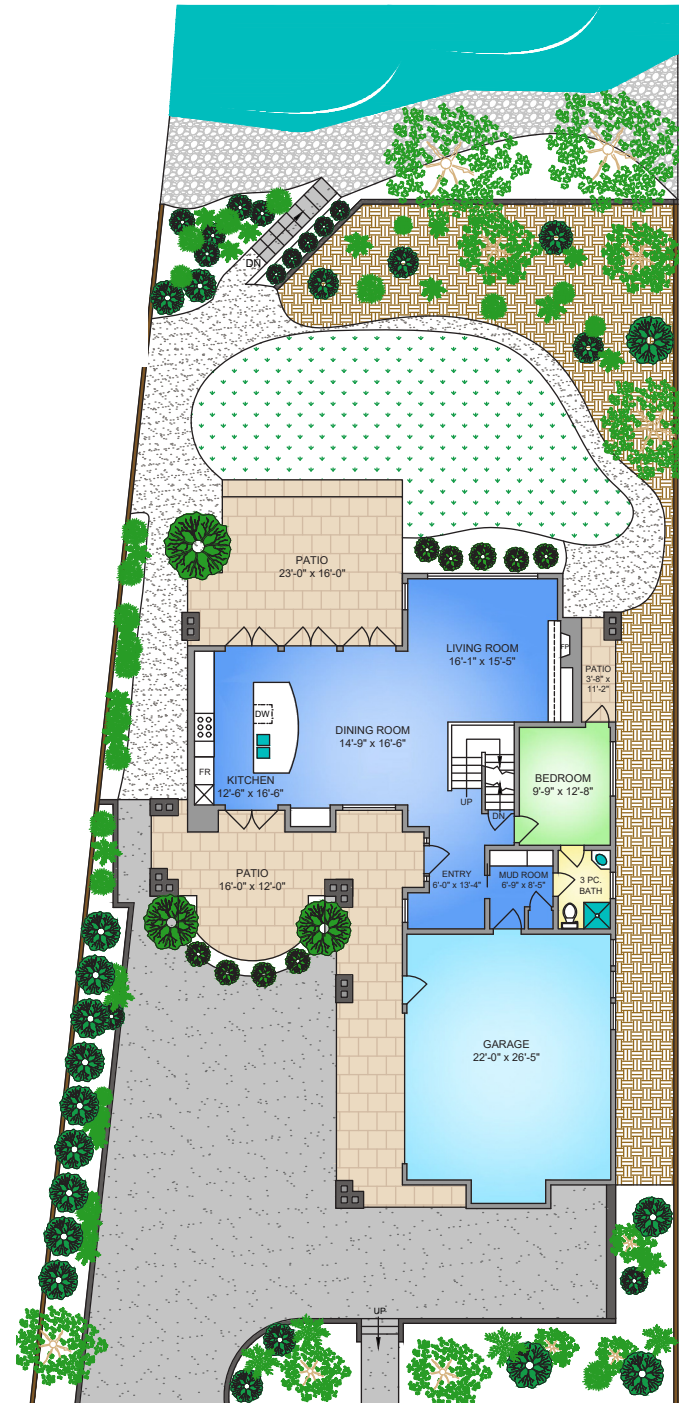
Garage 641 sq. ft.

Unfinished 808 sq. ft.

NORTH



0' 5' 10'
SCALE





Property Floorplan

Main Floor 1,235 sq. ft.

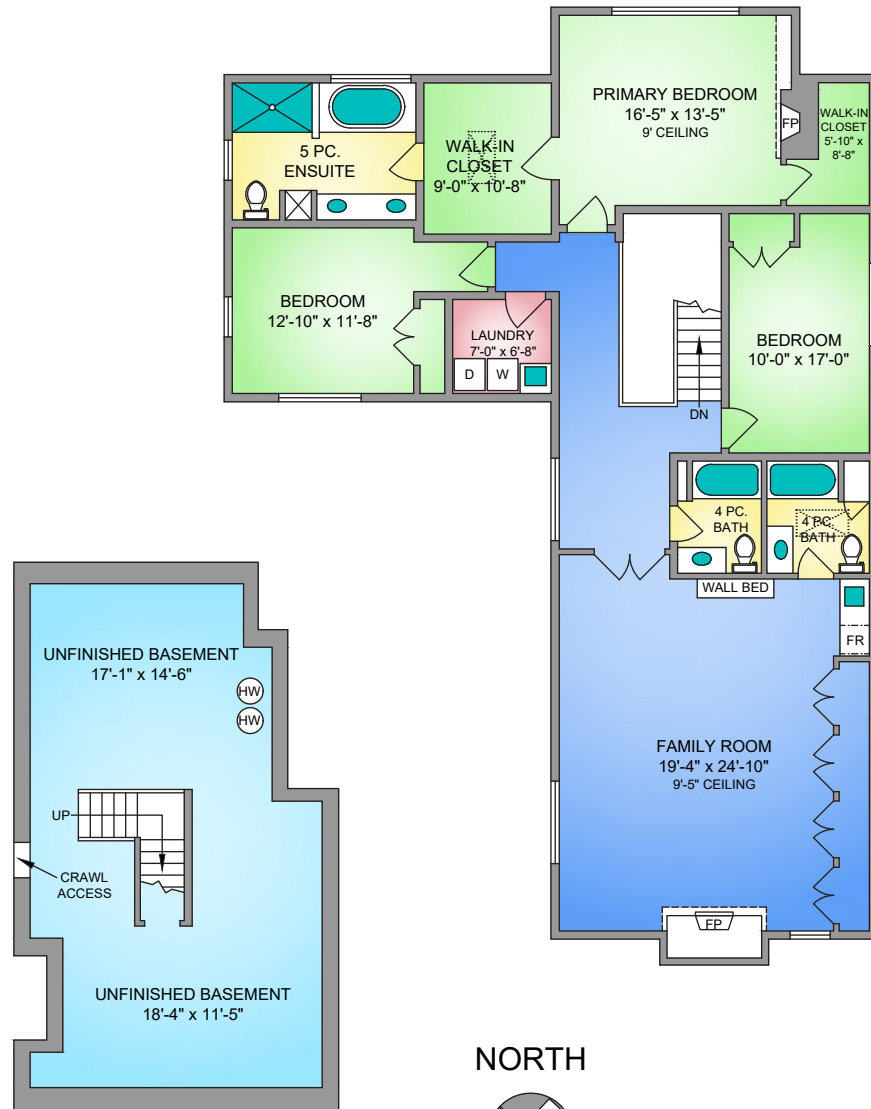
Upper Floor 1,960 sq. ft.

TOTAL AREA 3,195 sq. ft.

Patio/Deck 575 sq. ft.

Garage 641 sq. ft.

Unfinished 808 sq. ft.



NORTH



0' 5' 10'
SCALE



Property Photos

EXTERIOR





Property Photos

INTERIOR





Property Photos

KITCHEN





Property Photos

PRIMARY BEDROOM
& ENSUITE





Features & Finishes

QUALITY WITHOUT COMPROMISE

INTERIOR DESIGN

- Designed by Architect Dennis Moore
- Built by Hugh Owen Custom Builders
- West coast inspired
- Waterfront with stunning ocean views
- Located on a quiet street just a short walk from Beacon Avenue and the Marina
- Heated slate flooring
- 9' wood beamed ceilings in great room
- Large custom french doors leading to seaside patio
- Custom douglas fir hardwood throughout
- Equisite custom flooring, window casings, and doors throughout
- Gas slate fireplace
- Custom cedar staircase leading to second floor
- Barreled dormers featured throughout second floor
- 19'x25' games room with bar area and sink
- Unfinished basement with 8' ceilings perfect for a home theatre

GOURMET KITCHEN

- Cherry wood custom cabinets
- Matching panel doors
- Granite countertops
- 9' solid maple topped kitchen island

PRIMARY BEDROOM & ENSUITE

- Vaulted ceilings
- Gorgeous ocean views
- Gas fireplace & built-in bookcases
- Luxurious ocean view oversized soaker tub
- Plate glass shower
- Heated slate floors
- Built-in shelving and drawers with double sinks

LANDSCAPING & YARD

- Large paved patio just steps from the water
- Indoor/outdoor speaker system
- 2.5 car garage off main floor of home

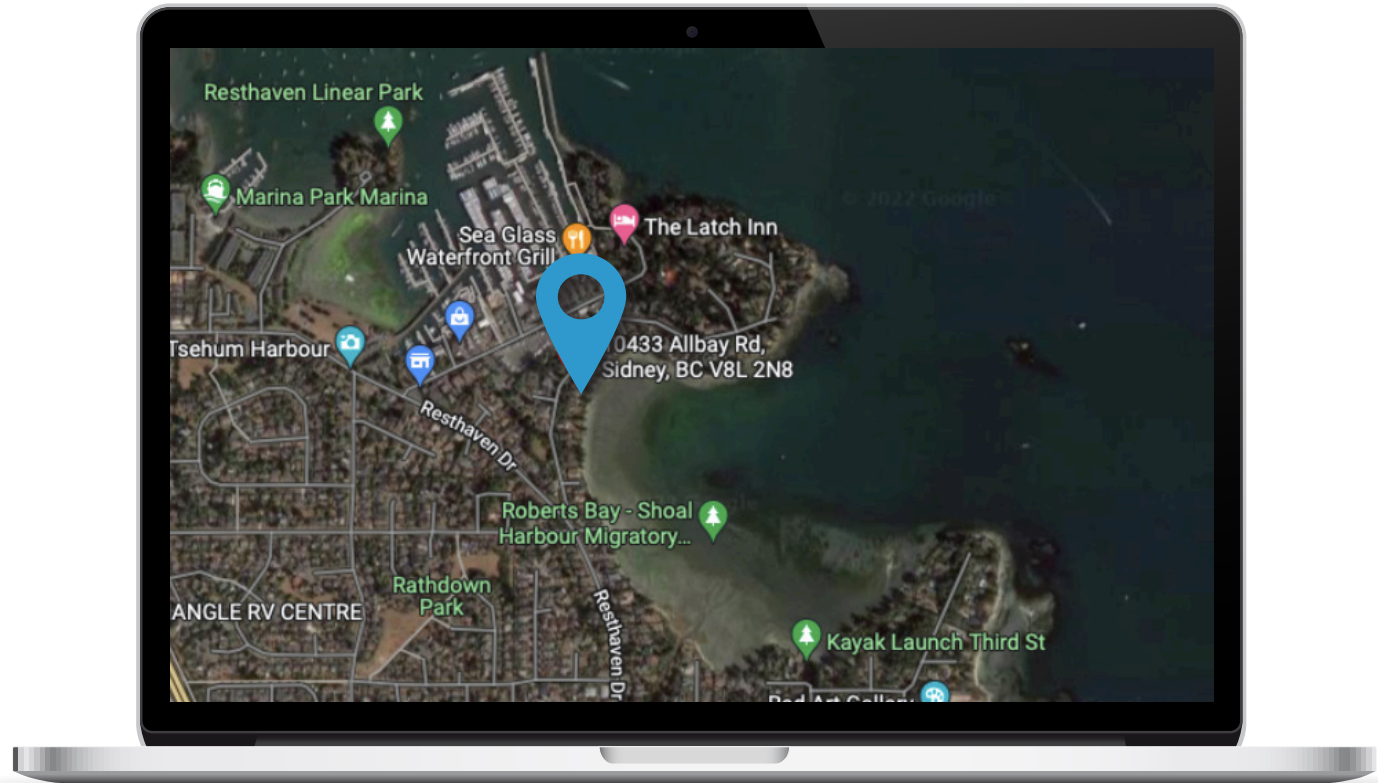
EXTERIOR DESIGN

- Gated driveway
- Covered beamed entry with batten exterior
- Solid fir front door
- Fir thermo pane windows with E-glazing



Location

(GIS) MAPPING





 **CHACE
WHITSON**
REAL ESTATE GROUP


Macdonald
Realty



CEL · 250 818 9338 | TEL · 778 426 2262

Chace@ChaceWhitson.com | ChaceWhitson.com

2411 · Bevan Avenue Sidney, BC · V8L 4M9





Chace Whitson | 250.818.9338 | Chace@ChaceWhitson.com | ChaceWhitson.com