

1681 GREENPARK PLACE

North Saanich





FOR SALE



1681 Greenpark Place North Saanich

SUMMARY OVERVIEW



LISTING PRICE:

\$1,895,000 + GST



LIVING AREA:

3,597 sq. ft.



BED:

4



BATH:

3



Welcome to 1681 Greenpark Place in North Saanich situated within an enclave of stunning custom-built homes. This brand-new 3,597 sqft 4 bedroom 3 bathroom home features custom millwork and interior detailing with superior quality and craftsmanship. Highlights on the main level include a custom kitchen with gas range, high quality appliances, open concept living-dining area with 13ft ceilings and French doors leading out to a south facing deck. The spacious primary bedroom offers a walk-in closet, access to the back patio and spa-like en-suite with soaker tub and multi-head rain shower. Downstairs has a large media room, family room, kitchenette, full bathroom and two additional bedrooms with in-law suite potential. Step outside to a beautiful outdoor living space with a large covered patio and picturesque yard. Additional highlights include a built-in outside storage area, heat pump with A/C, EV plug-in and double car garage. Situated just steps from Horth Hill Regional Park, this is an excellent opportunity to enjoy the comforts of a new construction home in a highly desirable setting. Located just minutes from BC Ferries, the Airport, & the Town of Sidney, this stunning home will not disappoint.



Property Floorplan

Main Floor 1,787 sq. ft.
Lower Floor 1,810 sq. ft.

TOTAL AREA 3,597 sq. ft.

Patio/Deck 911 sq. ft.
Garage 505 sq. ft.



* DIMENSIONS ARE FOR REFERENCE PURPOSES ONLY AND ARE NOT TAKEN FROM ORIGINAL BLUEPRINTS

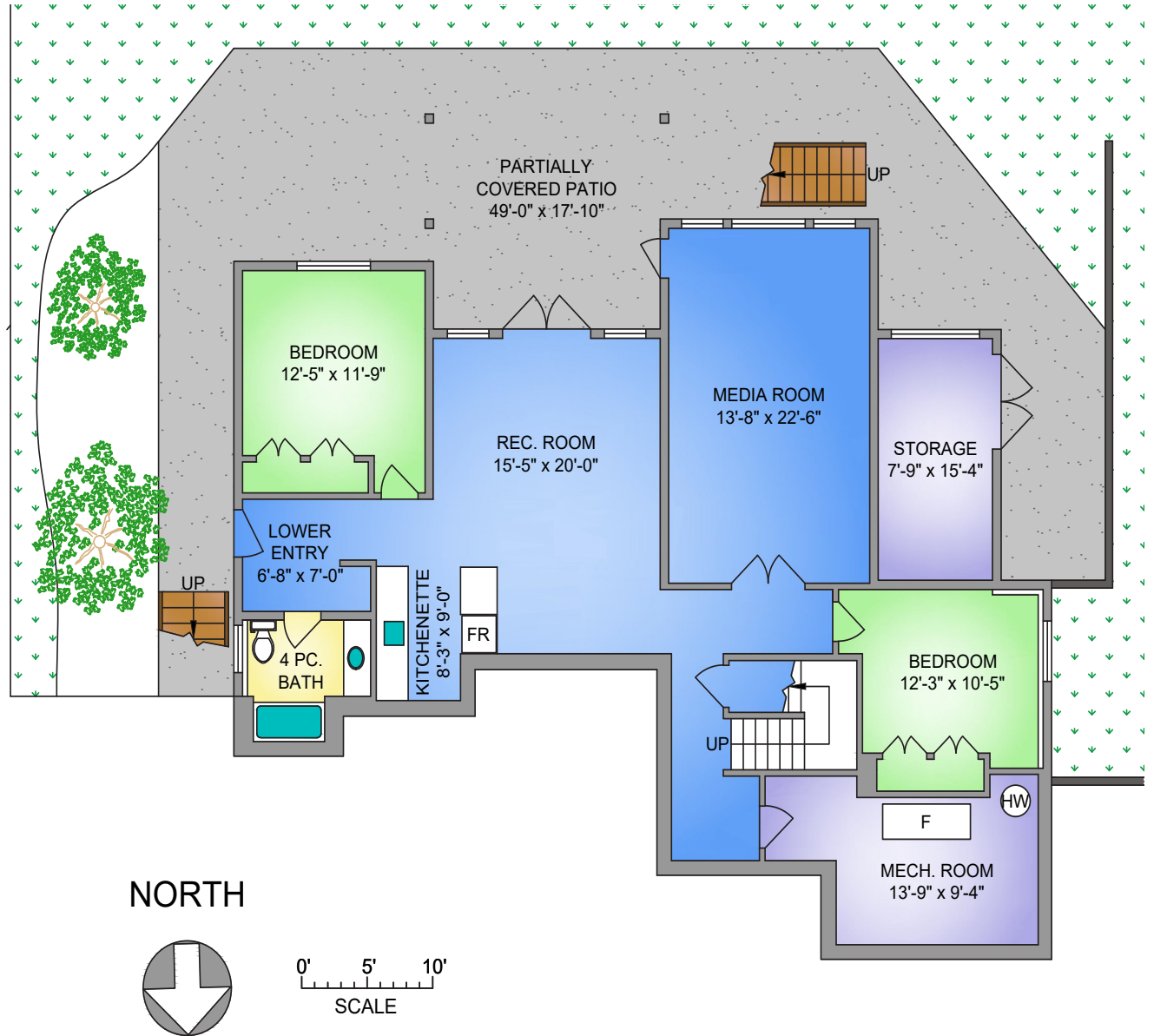


Property Floorplan

Main Floor 1,787 sq. ft.
Lower Floor 1,810 sq. ft.

TOTAL AREA 3,597 sq. ft.

Patio/Deck 911 sq. ft.
Garage 505 sq. ft.



NORTH



0' 5' 10'
SCALE

* DIMENSIONS ARE FOR REFERENCE PURPOSES ONLY AND ARE NOT TAKEN FROM ORIGINAL BLUEPRINTS



Property Photos

EXTERIOR





Property Photos

INTERIOR





Property Photos

INTERIOR





Property Photos

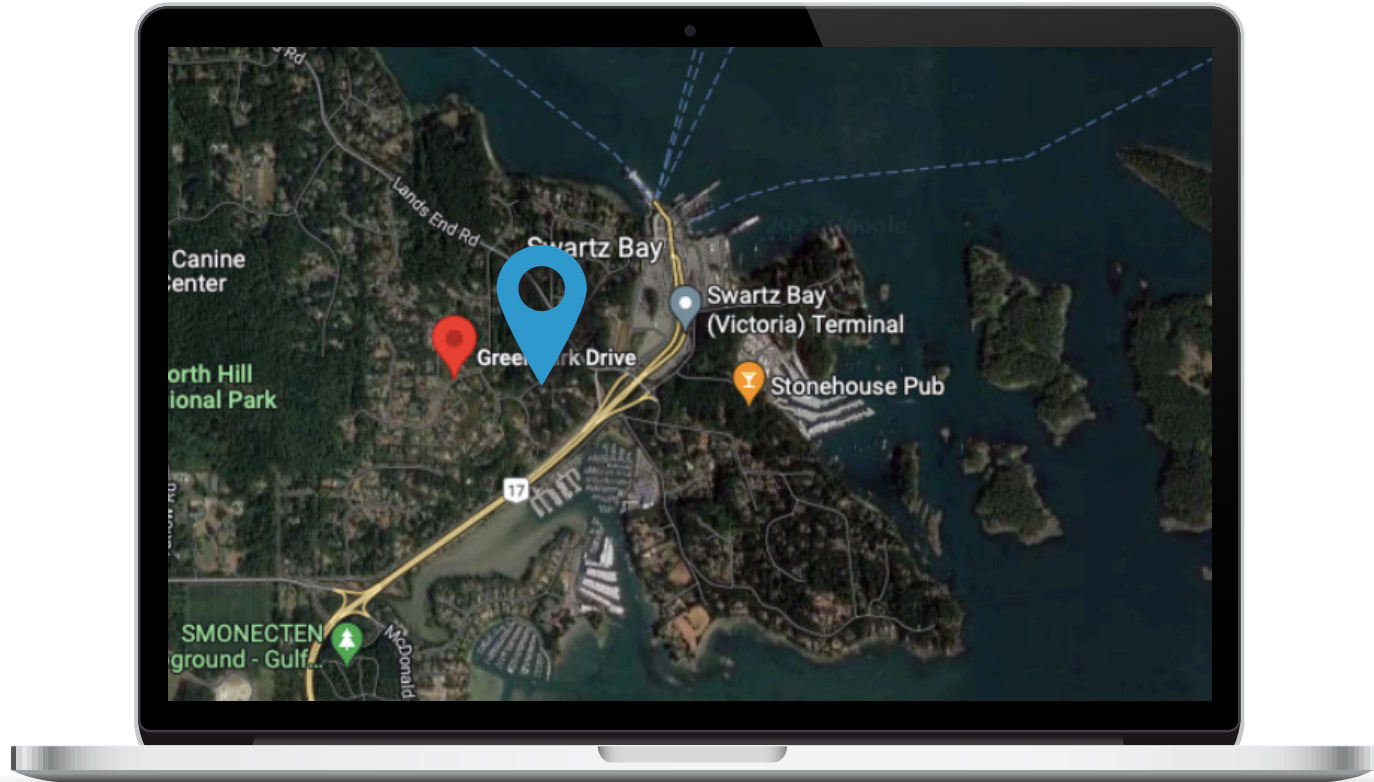
INTERIOR





Location

(GIS) MAPPING





 **CHACE
WHITSON**
REAL ESTATE GROUP


Macdonald
Realty



CEL · 250 818 9338 | TEL · 778 426 2262

Chace@ChaceWhitson.com | ChaceWhitson.com

2411 · Bevan Avenue Sidney, BC · V8L 4M9





Chace Whitson | 250.818.9338 | Chace@ChaceWhitson.com | ChaceWhitson.com