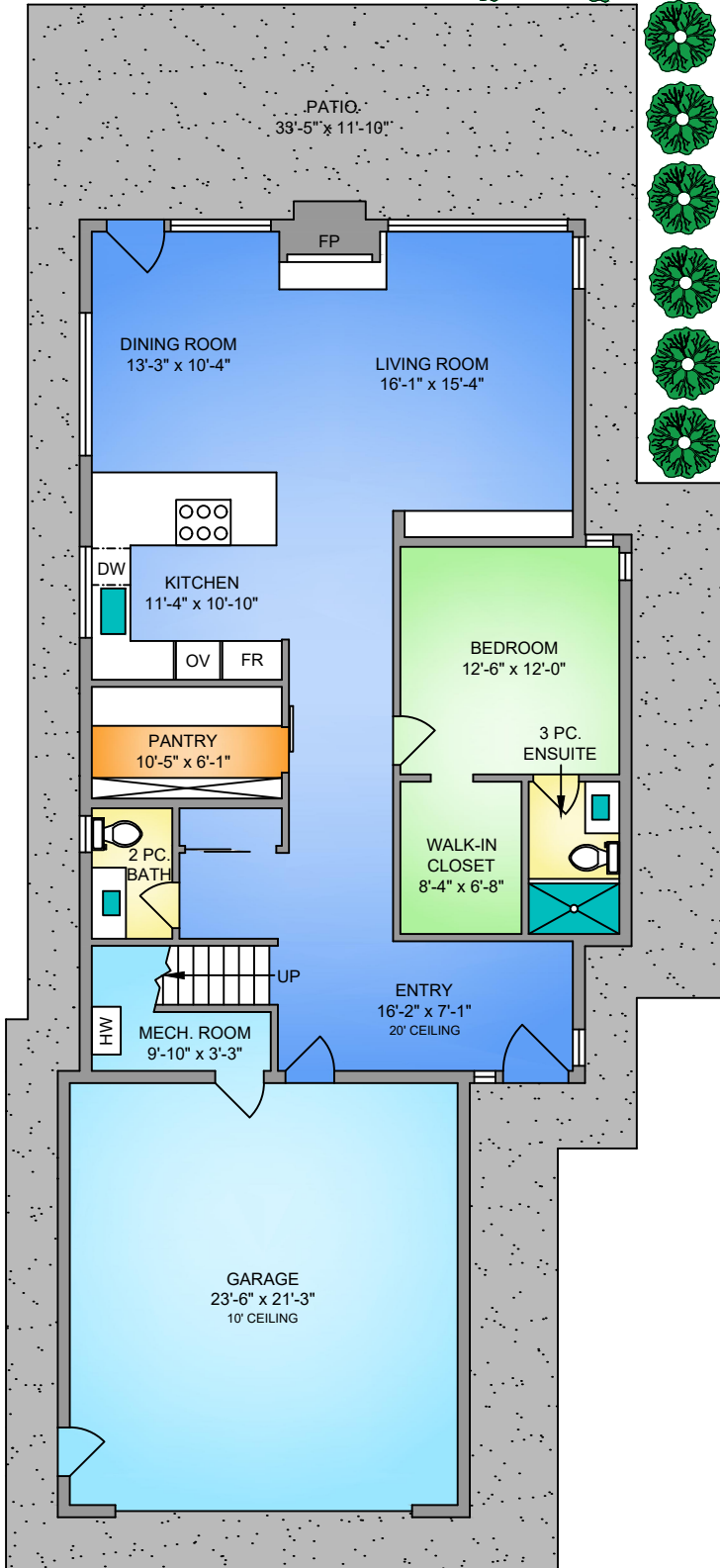


## MAIN FLOOR

1371 SQ. FT.

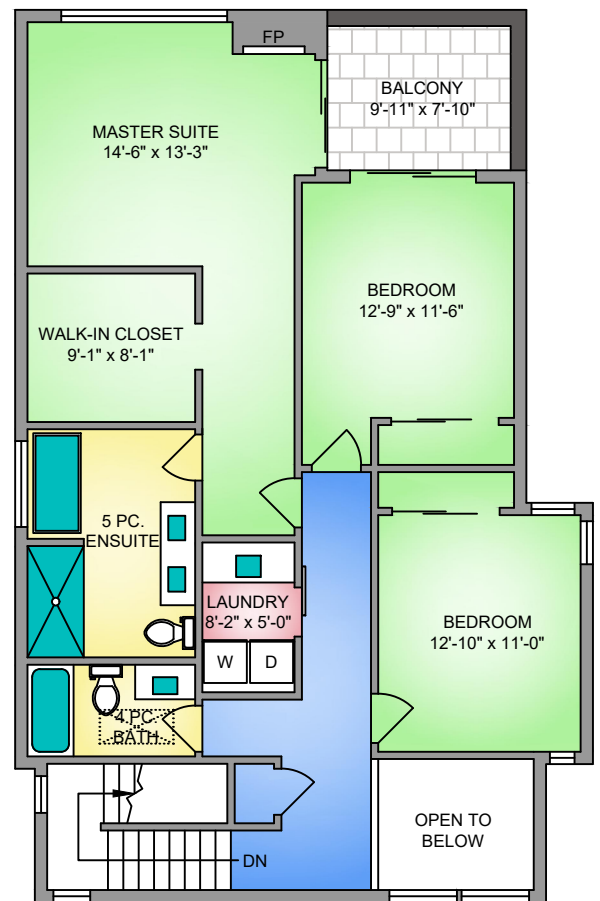
10' CEILING HEIGHT



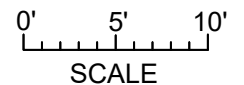
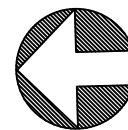
## UPPER FLOOR

1223 SQ. FT.

9' CEILING HEIGHT



NORTH



FLOOR	AREA (SQ. FT.)		
	FINISHED	GARAGE	BALCONY / PATIO
MAIN	1371	539	390
UPPER	1223	-	78
TOTAL	2594	539	468